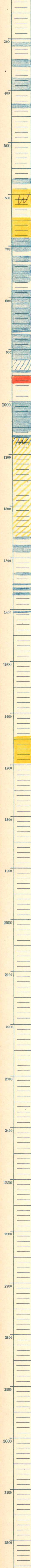
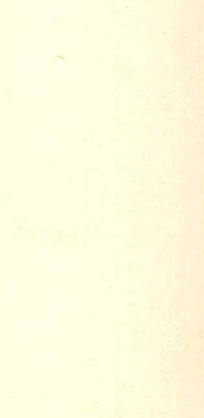


Kans. S. 30 T. 22 S., R. 13 E.
 Greenwood County
 K. L. Harmon & Products Company
 Salvat #5 Farm
 1097 T.D. 1697

Relation by _____
 drilled 7/18-8/1/28 J.P.



920-4 B.W.

1402-7

1645
1st oil 1650

1697 T.D.

log B.M. gives
1696 base of sand
shale from 1696-97