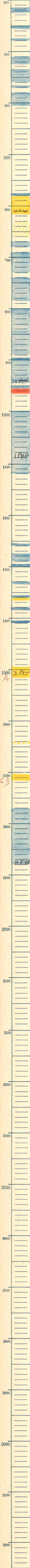


Range S 32 T. 22 S., R. 13 E.
 Greenwood County
 J. K. Simmons del. Company
 Luthi #1-B. Farm
 1125 T.D. 1980
 Pro - Dry
 Drilled 5/31-6/26/21 g/l



95
 15
 A 3 Pr.

1640-45

1703-16

1770

200' oil in hole before shot.

H.F.W. 1880 - T.D.