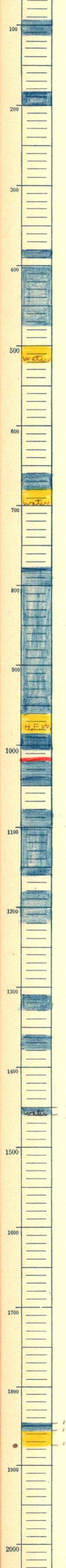
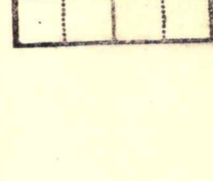


R. 34 T. 22 S., R. 13 E.
 Greenwood County
 Darby Company
 Frank Hessler #2 Farm
 1270 T.D. 1875
 I.P. 30 bbls.

Relation by _____
 Drilled 4-7-23 to 5-1-23
 M.K.



1450
 1460

1846
 1857
 1875 - T.D.