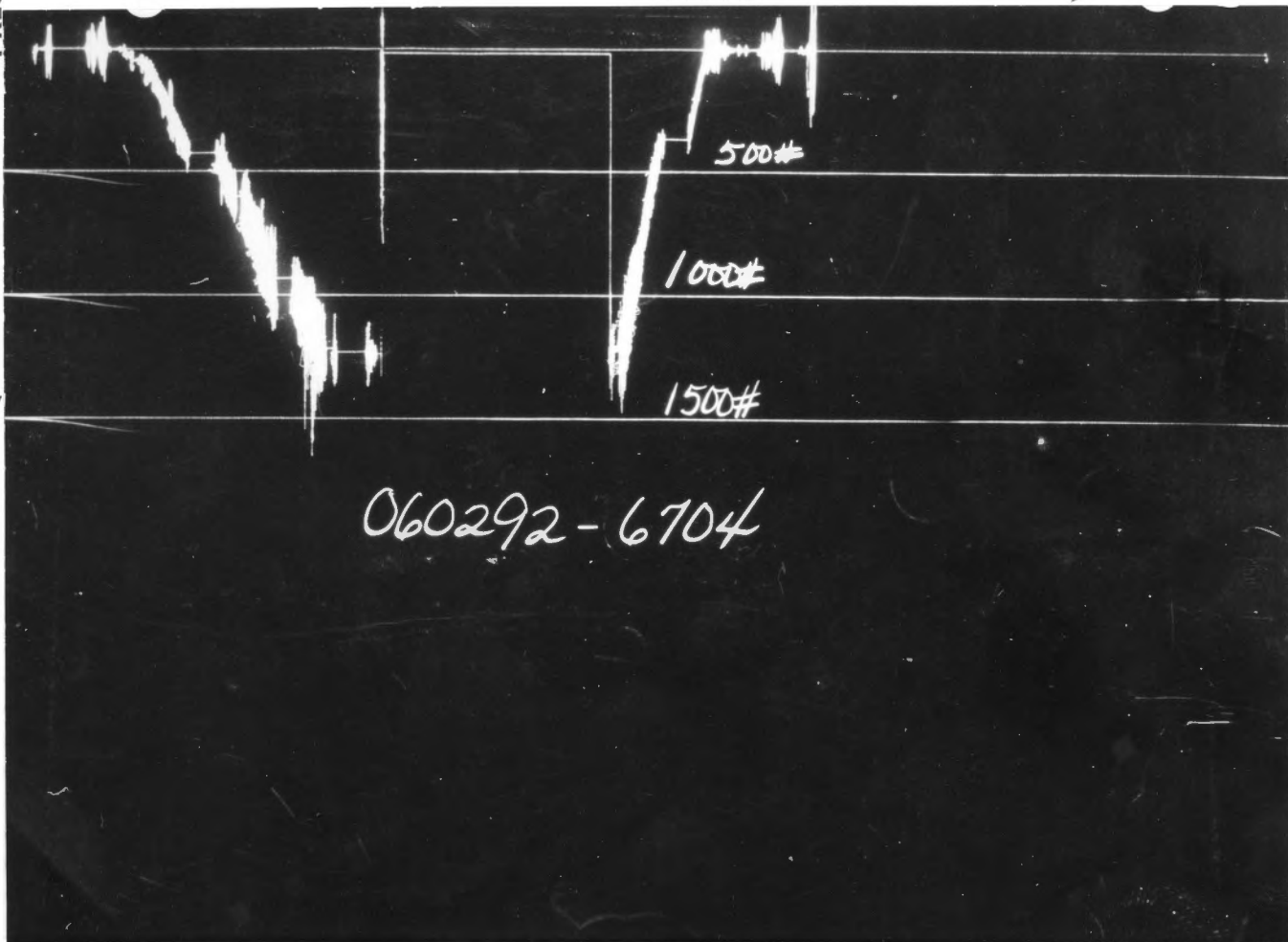
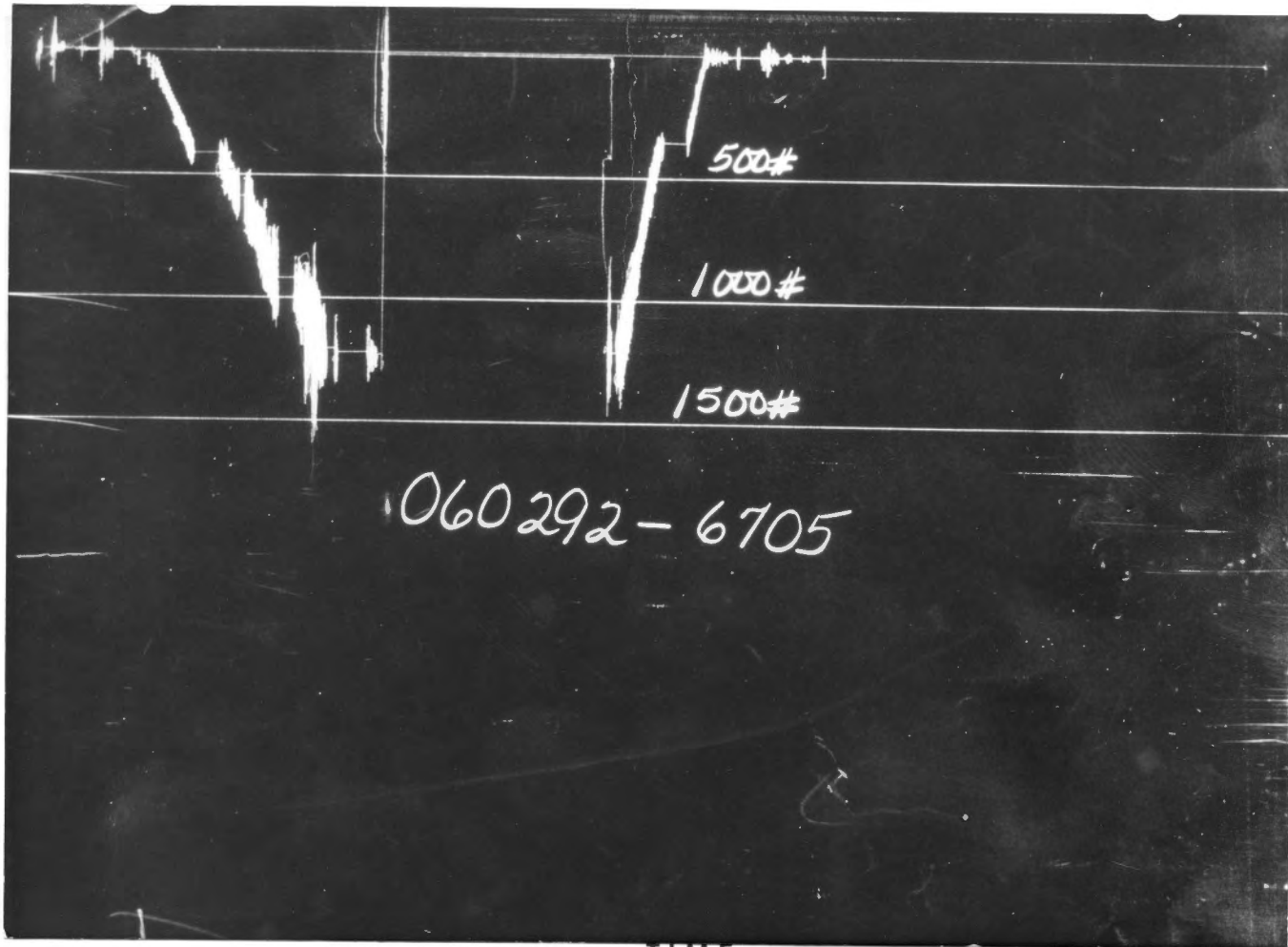


Casing perms. _____ Bottom choke 3/4" Surf. temp _____ °F Ticket No. 060292
 Gas gravity _____ Oil gravity _____ GOR _____
 Spec. gravity _____ Chlorides _____ ppm Res. _____ @ _____ °F
 INDICATE TYPE AND SIZE OF GAS MEASURING DEVICE USED _____

Date Time	Choke Size	Surface Pressure psi	Gas Rate MCF	Liquid Rate BPD	Remarks
4-4-76					
400					Truck called out. # 9082.
630					On location. Waiting on DST # 1.
715					Made up tool.
730					Picked up tool.
745					Went in hole.
1021					On bottom. No trouble.
1025					Opened tool with a very weak blow.
1030					Very weak blow.
1037					No blow (12 minutes)
1045					No blow.
1052					Closed tool.
1123					Opened tool with no blow.
1125					No blow.
1130					"
1140					"
1150					"
1155					Closed tool.
4-5-76					
1240					Off bottom.

	O. D.	I. D.	LENGTH	DEPTH
Drill Pipe or Tubing				
Reversing Sub	5"	2.25"	1'	
	5"	2.25"	1' DOUBLE PIN	
Water Cushion Valve				
Drill Pipe	3.50"	2.764"	2276'	
Drill Collars	4.50"	2.25"	124'	
Handling Sub & Choke Assembly	3.50"	3"	2.50'	
Dual CIF Valve	5"	.87"	5'	
Dual CIF Sampler				
Hydro-Spring Tester	5"	.75"	5'	2412'
Multiple CIP Sampler				
Extension Joint				
AP Running Case	5"	3.75"	4'	2414'
Hydraulic Jar				
VR Safety Joint	5"	1"	3'	
Pressure Equalizing Crossover				
Packer Assembly	5.50"	1.50"	4'	2424'
Distributor				
Packer Assembly	5.50"	1.50"	4'	2428'
Flush Joint Anchor	5"	3.84"	5'	
Pressure Equalizing Tube				
Blanked-Off B.T. Running Case	5"	2.75"	4'	2434'
Drill Collars				
Anchor Pipe Safety Joint				
Packer Assembly				
Distributor				
Packer Assembly				
Anchor Pipe Safety Joint				
Side Wall Anchor				
Drill Collars				
Flush Joint Anchor				
Blanked-Off B.T. Running Case				
Total Depth				2438'



Each Horizontal Line Equal to 1000 p.s.i.

FLUID SAMPLE DATA			Date	4-5-76	Ticket Number	060293
Sampler Pressure _____ P.S.I.G. at Surface	Kind of Job		OPEN HOLE			
Recovery: Cu. Ft. Gas _____	Tester		MR. BUTCHER			
cc. Oil _____	Witness		MR. KOONTZ			
cc. Water _____	Drilling Contractor		B AND N DRILLING COMPANY RIG #6			
cc. Mud _____	EQUIPMENT & HOLE DATA BC S					
Tot. Liquid cc. _____	Formation Tested		Viola Lime			
Gravity _____ 32 ° API @ _____ 60 ° F.	Elevation		1124' GL Ft.			
Gas/Oil Ratio _____ cu. ft./bbl.	Net Productive Interval		7' Ft.			
RESISTIVITY _____	All Depths Measured From		Ground Level			
CHLORIDE CONTENT _____	Total Depth		2440' Ft.			
Recovery Water _____ @ _____ ° F. _____ ppm	Main Hole/Casing Size		6 1/4"			
Recovery Mud _____ @ _____ ° F. _____ ppm	Drill Collar Length		124' I.D. 2.25"			
Recovery Mud Filtrate _____ @ _____ ° F. _____ ppm	Drill Pipe Length		2277 1/2' I.D. 2.764"			
Mud Pit Sample _____ @ _____ ° F. _____ ppm	Packer Depth(s)		2426' - 2430' Ft.			
Mud Pit Sample Filtrate _____ @ _____ ° F. _____ ppm	Depth Tester Valve		2414' Ft.			
Mud Weight _____ 9.7 vis _____ 52 cp						

Cushion	TYPE	AMOUNT	Depth Back Pres. Valve	Surface Choke	Bottom Choke
			Ft.	1/4"	3/4"
Recovered	20	Feet of	Free oil		
Recovered	33	Feet of	Oil cut drilling mud		
Recovered		Feet of			
Recovered		Feet of			
Recovered		Feet of			
Remarks	SEE PRODUCTION TEST DATA SHEET..				

Field Area: _____
 Meo. From Tester Valve: _____
 County: GREENWOOD
 State: KANSAS

TEMPERATURE	Gauge No. 6705	Gauge No. 6704	Gauge No.	TIME	
	Depth: 2416' Ft.	Depth: 2436' Ft.	Depth: _____ Ft.		
Est. 94 ° F.	12 Hour Clock	12 Hour Clock	Hour Clock	Tool A.M.	
	Blanked Off NO	Blanked Off YES	Blanked Off	Opened 11:46 P.M.	
Actual ° F.	Pressures	Pressures	Pressures	Opened A.M.	
	Field Office	Field Office	Field Office	Bypass 2:20 P.M.	
Initial Hydrostatic	1222	1230	1231	Reported Minutes	
First Period Flow	Initial	9	21	18	Computed Minutes
	Final	18	31	28	62
Closed in	305	314	315	32	31
Second Period Flow	Initial	21	31	29	60
	Final	29	42	38	31
Closed in	295	293	303		30
Third Period Flow	Initial				
Final					
Closed in					
Final Hydrostatic	1204	1220	1215		

Legal Location: Sec. - Twp. - Rng. 33 - 23 - 11E
 Lease Name: CARSON "B"
 Well No.: 1
 Test No.: 2
 Tested Interval: 2430' - 2440'
 County: GREENWOOD
 State: KANSAS
 Lease Owner/Company Name: PETROLEUM ENERGY, INCORPORATED

Casing perms. _____ Bottom choke 3/4" Surf. temp _____ °F Ticket No. 060293
 Gas gravity _____ Oil gravity _____ GOR _____
 Spec. gravity _____ Chlorides _____ ppm Res. _____ @ _____ °F
 INDICATE TYPE AND SIZE OF GAS MEASURING DEVICE USED _____

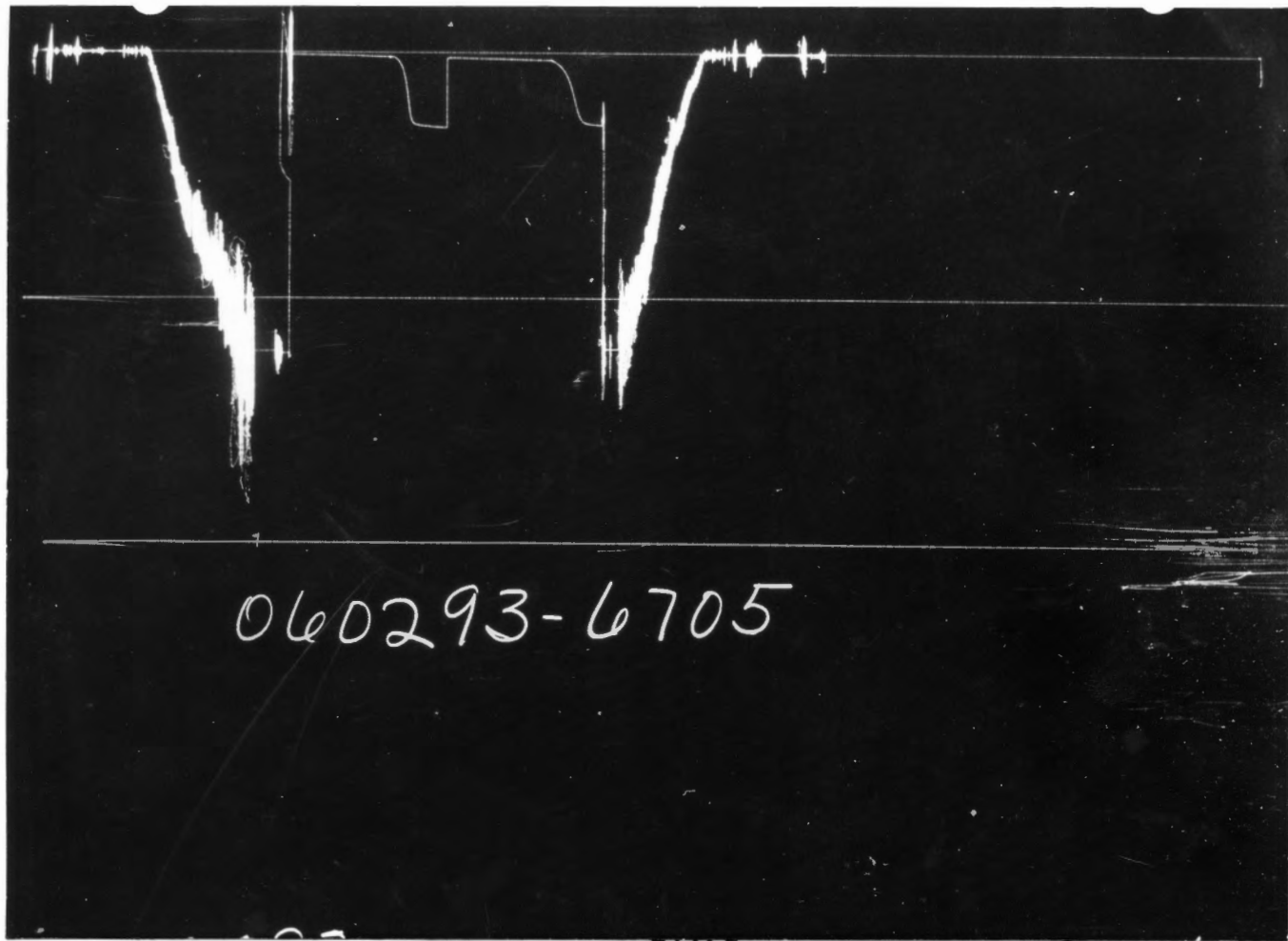
Date Time	a.m. p.m.	Choke Size	Surface Pressure psi	Gas Rate MCF	Liquid Rate BPD	Remarks
3:00						On location, waited for test #2.
						Drilled 2' test formation
9:00						Made up tool
9:15						Picked up tool
9:40						Went in hole
11:43						On bottom with no trouble
11:46						Opened tool with a very weak blow
11:50						Very weak blow
11:55						Blow getting weaker
12:01						No blow in 15 minutes
12:10						No blow
12:15						Started blowing again
						Very weak blow
12:20						"
12:30						Steady, very weak blow
12:45						"
12:48						Closed tool
1:20						Opened tool with a very weak blow
1:30						Very weak blow
1:45						Steady, very weak blow
2:00						"
2:15						"
2:20						Closed tool
2:51						Off bottom

Gauge No. 6705		Depth 2416'		Clock No. 7101		12 hour		Ticket No. 060293	
First Flow Period		First Closed In Pressure		Second Flow Period		Second Closed In Pressure		Third Flow Period	
Time Defl. .000"	PSIG Temp. Corr.	Time Defl. .000"	PSIG Temp. Corr.	Time Defl. .000"	PSIG Temp. Corr.	Time Defl. .000"	PSIG Temp. Corr.	Time Defl. .000"	PSIG Temp. Corr.
Log $t + \frac{\theta}{\theta}$		Log $t + \frac{\theta}{\theta}$		Log $t + \frac{\theta}{\theta}$		Log $t + \frac{\theta}{\theta}$		Log $t + \frac{\theta}{\theta}$	
0	.0000	9	18	.0000	21	.0000	29		
1	.0780	10*	26**	.0794	22*	.0140	33		
2	.1430	11	47	.1455	25	.0280	44		
3	.2080	12	88	.2116	26	.0420	56		
4	.2730	13	170	.2777	27	.0560	76		
5	.3380	17	271	.3439	28	.0700	102		
6	.4030	18	290	.4100	29	.0840	141		
7			296			.0980	195		
8			298			.1120	245		
9			299			.1260	276		
10			300			.1400	286		
11			302			.1540	289		
12			303			.1680	291		
13			304			.1820	293		
14			304			.1960	294		
15			305			.2100	295		

Gauge No. 6704		Depth 2436'		Clock No. 7047		12 hour	
Time Defl. .000"	PSIG Temp. Corr.	Time Defl. .000"	PSIG Temp. Corr.	Time Defl. .000"	PSIG Temp. Corr.	Time Defl. .000"	PSIG Temp. Corr.
0	.0000	18	28	.0000	29	.0000	38
1	.0805	19*	46**	.0713	30*	.0137	45
2	.1476	20	74	.1490	32	.0273	53
3	.2147	21	133	.2168	33	.0410	68
4	.2818	23	241	.2845	36	.0547	87
5	.3489	25	295	.3523	37	.0683	114
6	.4160	28	303	.4200	38	.0820	155
7			305			.0957	210
8			306			.1093	259
9			309			.1230	287
10			310			.1367	295
11			312			.1503	298
12			313			.1640	300
13			314			.1777	301
14			315			.1913	302
15			315			.2050	303

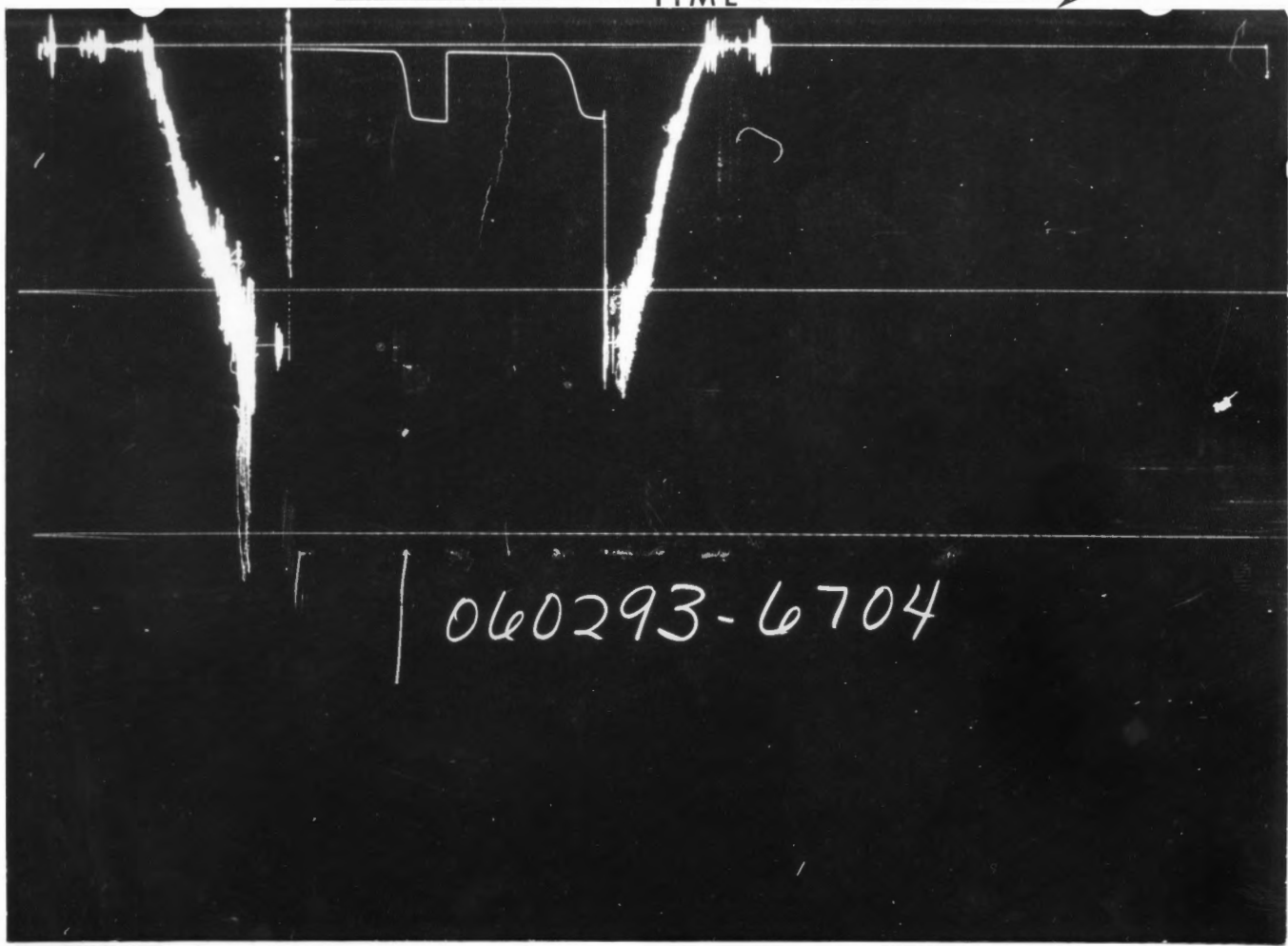
Reading Interval 10 2 10 2
 REMARKS: *Interval = 12 minutes **Interval = 3 minutes

	O. D.	I. D.	LENGTH	DEPTH
Drill Pipe or Tubing				
Reversing Sub	5"	2.25"	1'	
Double Pin	5"	2.25"	1'	
Water Cushion Valve				
Drill Pipe	3½" IF	2.764"	2277½'	
Drill Collars	4½"	2.25"	124'	
Handling Sub & Choke Assembly	3½"	3"	2½'	
Dual CIP Valve	5"	.87"	5'	
Dual CIP Sampler				
Hydro-Spring Tester	5"	.75"	5'	2414'
Multiple CIP Sampler				
Extension Joint				
AP Running Case	5"	3.75"	4'	2416'
Hydraulic Jar				
VR Safety Joint	5"	1"	3'	
Pressure Equalizing Crossover				
Packer Assembly	5½"	1.50"	4'	2426'
Distributor				
Packer Assembly	5½"	1.50"	4'	2430'
Flush Joint Anchor	5"	3.84"	5'	
Pressure Equalizing Tube				
Blanked-Off B.T. Running Case	5"	2.75"	4'	2436'
Drill Collars				
Anchor Pipe Safety Joint				
Packer Assembly				
Distributor				
Packer Assembly				
Anchor Pipe Safety Joint				
Side Wall Anchor				
Drill Collars				
Flush Joint Anchor				
Blanked-Off B.T. Running Case				
Total Depth				2440'



PRESSURE

TIME



Each Horizontal Line Equal to 1000 p.s.i.