

Kans. S. 13 T. 23 S., R. 11 E. W.

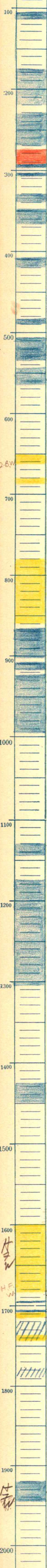
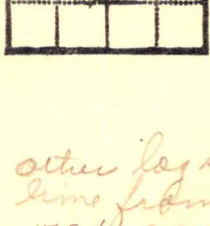
Greenwood County

Snyder et al Company

Bakers #1 Farm

T.D.

Relation by drilled 10/30/26. G.B.



other logs show  
lime from  
175 to 200.

2.6. water

1600

H.F.W. - 1682 - H.F.W.  
- 1683  
- 1693-96.  
- 1704 -  
- 1713 - Badleville Sand  
- 1720-37  
- 1737-44

1778-1787

1920  
1935  
1945 - H.F.W. - Miss. Lime