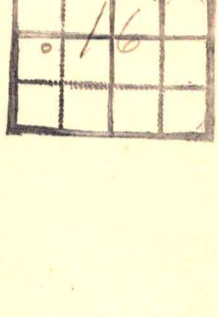
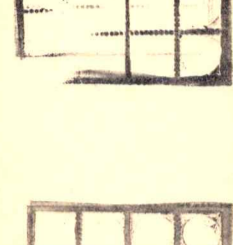
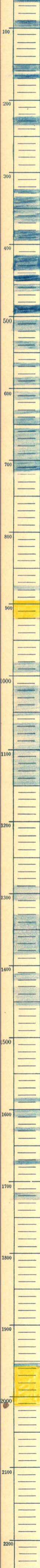


Kans. S. 16 T. 23 S., R. 11 E.  
 Greenwood County  
 Texas Co. Company  
 Edwards B #3 Farm  
 T.D. 2011'  
 33' S + 330' W to N+EL  
 of NW 1/4 of SW 1/4  
 75 bbls.  
 Drilled 12-23-26 to 1-11-27  
 SMK



1670  
1675

1715  
1725

1953 to 1956 ✓  
 oil Sand  
 2011 S.L.M. - T.D.  
 6 5/8 originally  
 set at 1922  
 later U.P. set 1958