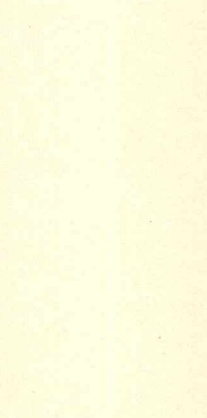
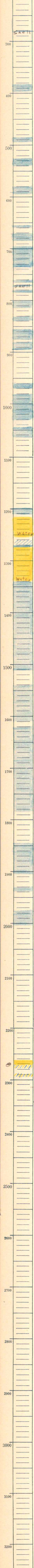


Range S. 19 T. 23 S., R. 10 E.  
 Greenwood County  
 Independent Oil Company  
 A.D. Rice #2 Farm  
 T.D.  
 Geo - Dry  
 Drilled by  
 drilled 4/23 - 6/1/29  
 GB



1975  
 level bed  
 2005

sh. carb.  
 2262-72 low shaft  
 2279 low shaft - oil show  
 2281-94 shaft  
 sh. carb.  
 2315 - T.D.  
 Plugged Back to 2282  
 & abd  
 Plugged 6/14/29

lt  
 - 85-