

OILFIELD RESEARCH LABORATORIES

536 NORTH HIGHLAND - CHANUTE, KANSAS 66720 - PHONE (316) 431-2650

January 14, 1980

Compton Industries
P.O. Box 437
Moran, Kansas 66755

Gentlemen:

Enclosed herewith are the results of tests run on the rotary core taken from the Stewart Lease, Well No. XS-6C, Bourbon County, Kansas, and submitted to our laboratory on December 12, 1979.

The core was sampled by a representative of the client.

Your business is greatly appreciated.

Very truly yours,

OILFIELD RESEARCH LABORATORIES


Sanford A. Michel

SAM/tem
5 c to Moran, Kansas

- REGISTERED ENGINEERS -

CORE ANALYSIS - WATER ANALYSIS - REPRESSURING ENGINEERING - SURVEYING & MAPPING - PROPERTY EVALUATION & OPERATION

Oilfield Research Laboratories
GENERAL INFORMATION & SUMMARY

Company Compton Industries Lease Stewart Well No. XS-6C
 Location 165' NSL & 495' WEL SE $\frac{1}{4}$ SW $\frac{1}{4}$
 Section 27 Twp. 23S Rge. 22E County Bourbon State Kansas

Elevation, Feet

Name of Sand Burbank

Top of Core 659.0

Bottom of Core 666.0

Top of Sand 659.0

Bottom of Sand 666.0

Total Feet of Permeable Sand 7.0

Distribution of Permeable Sand: Permeability Range Millidarcys	Feet	Cum. Ft.
0 - 16	2.7	2.7
30 & Above	4.3	7.0

Average Permeability Millidarcys 26.6

Average Percent Porosity 20.1

Average Percent Oil Saturation

Average Percent Water Saturation

Average Oil Content, Bbls./A. Ft.

Total Oil Content, Bbls./Acre

OILFIELD RESEARCH LABORATORIES

LOG

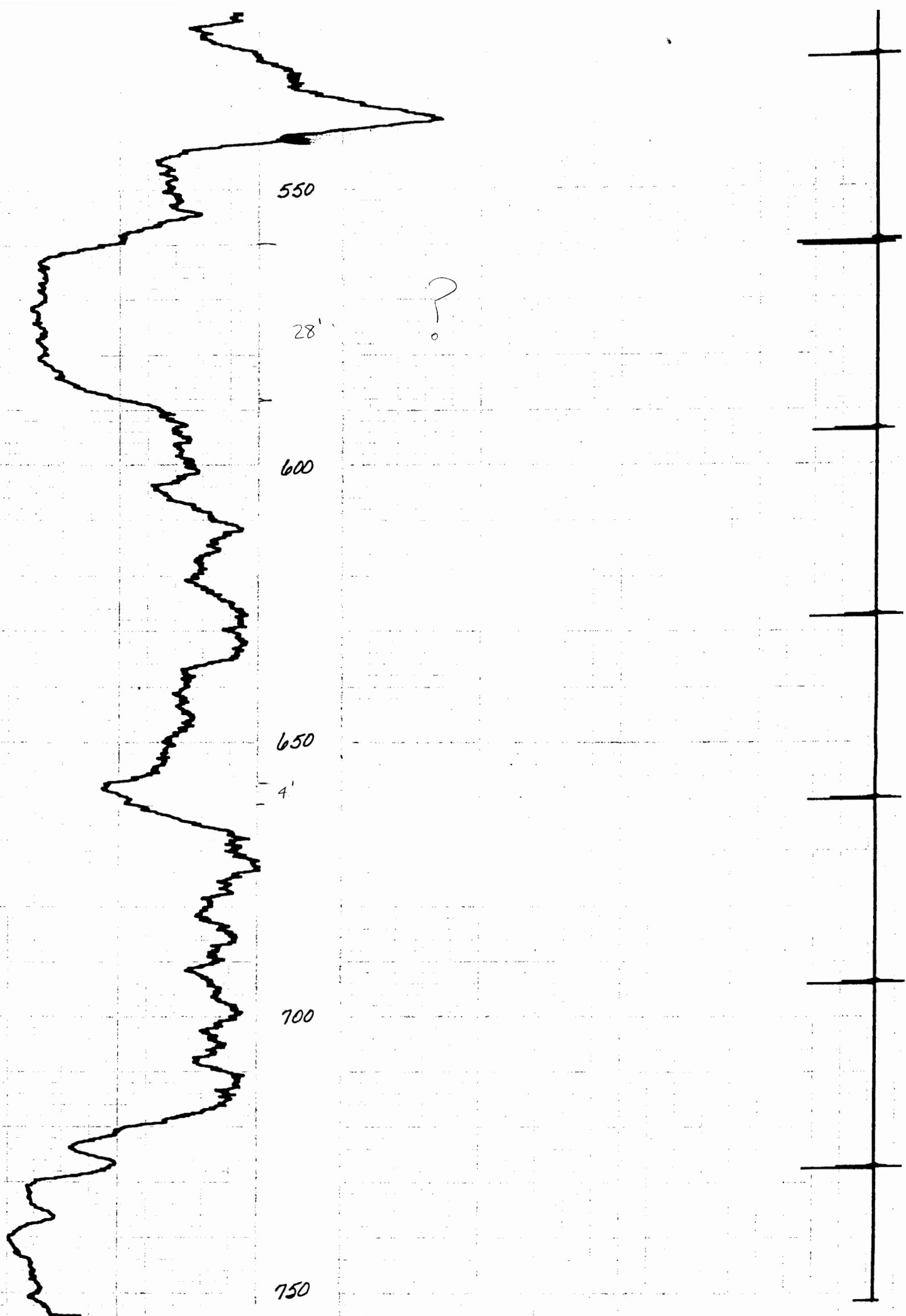
Name Compton Industries Lease Stewart Well No. XS-6C

<u>Depth Interval,</u> <u>Feet</u>	<u>Description</u>
659.0 - 660.3	Gray laminated sandstone and shale.
660.3 - 663.9	Gray sandstone.
663.9 - 664.7	Gray laminated sandstone and shale.
664.7 - 666.0	Gray sandstone.

Oilfield Research Laboratories
RESULTS OF PERMEABILITY AND POROSITY TESTS
TABLE I A

Company Compton Industries Lease Stewart Well No. XS-6C

Sample No.	Depth Feet	Permeability Millidarcys	Feet of Core		Permeability Capacity Ft. x Md.	Percent Porosity
			Ft.	Cum. Ft.		
1	659.5	8.3	1.3	1.3	10.79	20.0
2	660.5	10.	0.6	1.9	6.00	19.1
3	661.5	32.	1.0	2.9	32.00	19.1
4	662.5	39.	1.0	3.9	39.00	20.4
5	663.5	41.	1.0	4.9	41.00	21.2
6	664.5	15.	0.8	5.7	12.00	20.2
7	665.5	35.	1.3	7.0	45.50	20.2



T.D 755.2
R.D 754.2

STEWART 6-C
DECEMBER 13, 1979