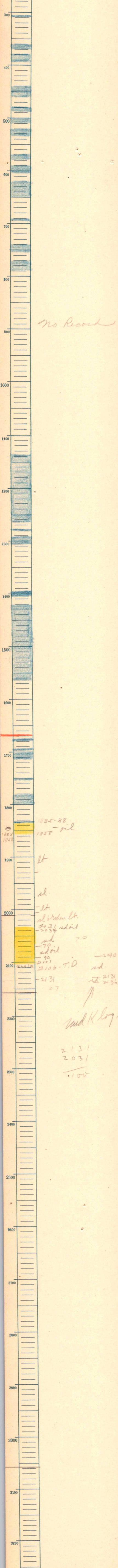


S. 23 T. 23 S., R. 10 E.
 Greenwood County
 Mid-Kans. O. & G. Company
 Allen #3 Farm
 170641 T.D.
 100 ft 2066-2131
 1245/K.

Relation by
 drilled 1/4 - 2/10/23



No Record

1835-38
1858 - oil

lt

sd

lt

sd broken lt.

2031 sd oil

sd 70

sd oil

90

2101

2106 - T.D.

2131

57

2090

sd.

2131

2136.77

and K log.

2131

2031

100