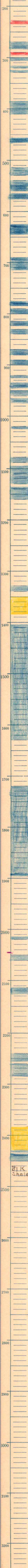


Rans. S. 28 T. 23 S.R. 10 E.
 Greenwood County
 Messersmith - (S. 100) Company
 Thrall? 1. Farm
 Dry. T.D. 2480'

1474 MK.

Drilled by 575-6/11/23. MK



1720
 1895

2015
 2020
 2050
 2060
 2112
 2127
 2240
 2255
 2260
 2285

2050
 1474

 576

sl.
 2385
 96
 oil sl.
 2430 sl.
 2432
 2450 37h.
 BLK Shale
 2480 - T.D.