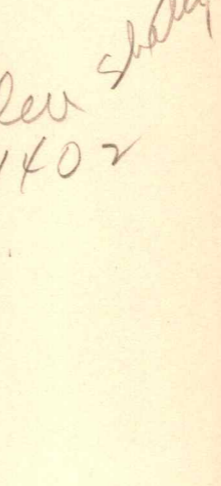


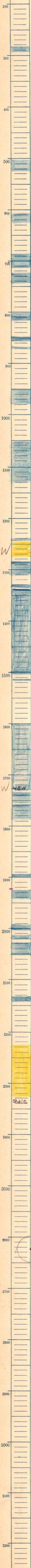
Rans. 29 T. 23 S. R. 10 E. W.
 Greenwood County
 Prairie et al Company
 F. S. Thrall #A16 Farm
 T.D.

792' for 92' 264' for 52'
 SE 1/4

Relation by 1457 MK.
 Drilled 4--23 to 5-29-23
 MSH



Elev Shally
 1402



W 12597
 1275 HPW.
 W 40W
 1895-1900
 1925
 1943
 1993
 2001
 2011
 2021
 2026
 2051
 2131
 2141
 Lt.
 2226
 rd.
 50
 Paid
 2328
 shale 2333

1925
 1402

 523

2328
 1397

 931

