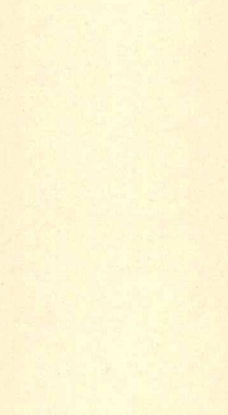
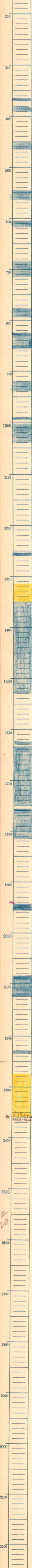


Kans. 29 T. 23 S. R. 10 E.
 Greenwood County
 Prairie Company
 F. G. Skell "F" 20 Farm

T.D.
 250 ft. S.L. 330 ft. W.L.

relation by 1415 MK.
 drilled 4-23 to 5-10-23
 MK



Elev
 1413

1815

1945
 1955

1945
 1413

 532

2085

2125

2230-35

2275

360
 275

 85

oil sand shale 2360
 2365

2360
 1413

 947

 20