

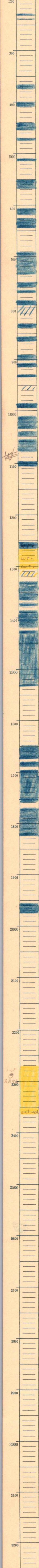
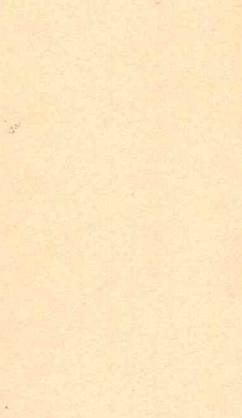
S. 31 T. 23 S., R. 10 E.

Greenwood County
Mid-Kansas Oil & Gas Company

J. W. Martindell #1
Farm

235 T.D. after 235
260 gals 2300-71.

relation by
date drilled 5-10 to 6-7-24



1251
1267
1292
1295
1305

maybe
1366.

2270

107
2296

2364 T.D.
1362
1002

oil ad
2286 to
2371
MudK.