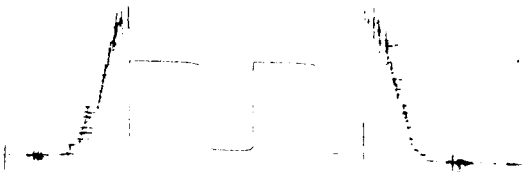


Ykt # 6163

0

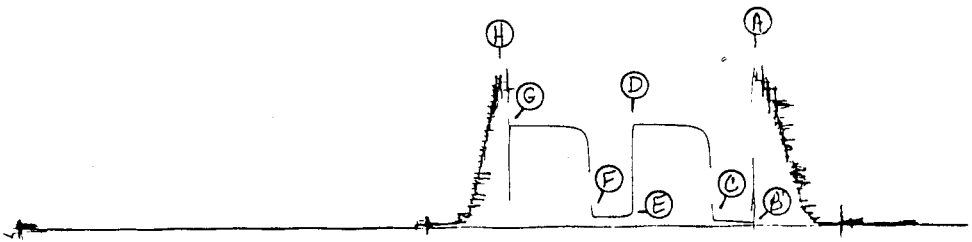
3354



DST#1  
6163

5666

464 #6163  
H





WESTERN TESTING CO., INC.
FORMATION TESTING

TICKET No 6163

OK

P. O. BOX 1599 WICHITA, KANSAS 67201
PHONE (316) 262-5861

Elevation 1502 KB Formation Lansing Eff. Pay Ft.

COMPANY NAME Range Oil Co Inc
ADDRESS 240 Page Ct 230 W. Douglas Wichita, Ks 67202
LEASE AND WELL NO Church #5 COUNTY Butler STATE KS
Mail Invoice To Same Co. Name #5 Church Address No. Copies Requested 1
Mail Charts To Same #5 Church Address No. Copies Requested 5

Formation Test No. 1 Interval Tested From 1576 ft. to 1586 ft. Total Depth 1586 ft.
Packer Depth 1571 ft. Size 6.75 in. Packer Depth - ft. Size - in.
Packer Depth 1576 ft. Size 6.75 in. Packer Depth - ft. Size - in.
Depth of Selective Zone Set
Top Recorder Depth (Inside) 1578 ft. Recorder Number 5666 Cap. 3950
Bottom Recorder Depth (Outside) 1581 ft. Recorder Number 3354 Cap. 4200
Below Scaddle Recorder Depth - ft. Recorder Number - Cap. -
Drilling Contractor Range #2 Drill Collar Length 178 I. D. 2.25 in.
Mud Type Chem Viscosity 35 Weight Pipe Length - I. D. - in.
Weight 9' Water Loss 12.0 cc. Drill Pipe Length 1378 I. D. 3.8 in.
Chlorides 1000 P.P.M. Test Tool Length 20 ft. Tool Size 5.5 in.
Jars: Make - Serial Number - Anchor Length 10 ft. Size 5.5 in.
Did Well Flow? NO Reversed Out NO Surface Choke Size 1.75 in. Bottom Choke Size 1.75 in.
Main Hole Size 7 7/8 in. Tool Joint Size 4 1/2 XH in.

Blow: Weak thru out

Recovered 2 ft. of Free oil 34 Spec. grav.
Recovered 50 ft. of oil cut, watery mud 5 90 oil
Recovered - ft. of
Recovered - ft. of
Recovered - ft. of
Chlorides 10,000 P.P.M. Sample Jars used 3 Remarks:

Time On Location 9:30 A.M. Time Pick Up Tool 10:45 A.M. Time Off Location STDBY A.M.
Time Set Packer(s) 12:15 P.M. Time Started Off Bottom 3:15 P.M. Maximum Temperature 76°
Initial Hydrostatic Pressure (A) 760 P.S.I.
Initial Flow Period Minutes 30 (B) 10 P.S.I. to (C) 30 P.S.I.
Initial Close in Period Minutes 60 (D) 540 P.S.I.
Final Flow Period Minutes 30 (E) 60 P.S.I. to (F) 50 P.S.I.
Final Close in Period Minutes 60 (G) 540 P.S.I.
Final Hydrostatic Pressure (H) 760 P.S.I. #5666

COMPANY TERMS
Western Testing Co., Inc. shall not be liable for damages of any kind to the property or personnel of the one for whom a test is made or for any loss suffered or sustained directly or indirectly through the use of its equipment, of its statements or opinion concerning the results of any test. Tools lost or damaged in the hole shall be paid at cost by the party for whom the test is made.
All charges subject to 12% interest after 60 days from date of invoice. Any expense incurred for collection will be added to the original amount.
Test Approved By Gary F. Gursch
Signature of Customer or his authorized representative

Western Representative Allen Edgington
0525

FIELD INVOICE table with columns for item and price. Items include Open Hole Test (\$550), Misrun, Straddle Test, Jars, Selective Zone, Safety Joint, Standby, Evaluation, Extra Packer, Circ. Sub., Mileage, Fluid Sampler, Extra Charts, Insurance, Telecopier, and TOTAL.

WESTERN TESTING CO., INC.

Pressure Data

Date 11-21-85

Test Ticket No. 6163

Recorder No. 5666

Capacity 3950

Location \_\_\_\_\_ Ft.

Clock No. \_\_\_\_\_ Elevation \_\_\_\_\_

Well Temperature 76 °F

Point	Pressure	
A Initial Hydrostatic Mud	<u>766</u>	P.S.I.
B First Initial Flow Pressure	<u>18</u>	P.S.I.
C First Final Flow Pressure	<u>31</u>	P.S.I.
D Initial Closed-in Pressure	<u>543</u>	P.S.I.
E Second Initial Flow Pressure	<u>53</u>	P.S.I.
F Second Final Flow Pressure	<u>54</u>	P.S.I.
G Final Closed-in Pressure	<u>543</u>	P.S.I.
H Final Hydrostatic Mud	<u>766</u>	P.S.I.

	Time Given	Time Computed
Open Tool	<u>12:15 P</u>	<u>3:15 P</u>
First Flow Pressure	<u>30</u> Mins.	<u>30</u> Mins.
Initial Closed-in Pressure	<u>60</u> Mins.	<u>60</u> Mins.
Second Flow Pressure	<u>30</u> Mins.	<u>30</u> Mins.
Final Closed-in Pressure	<u>60</u> Mins.	<u>60</u> Mins.

PRESSURE BREAKDOWN

First Flow Pressure  
Breakdown: 7 Inc.  
of 5 mins. and a  
final inc. of 0 Min.

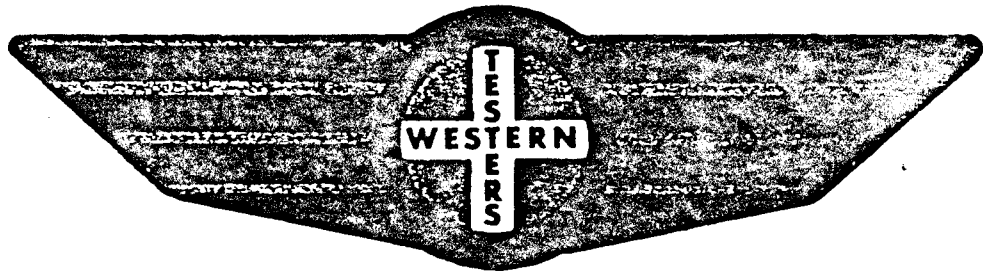
Initial Shut-In  
Breakdown: 21 Inc.  
of 3 mins. and a  
final inc. of 0 Min.

Second Flow Pressure  
Breakdown: 7 Inc.  
of 5 mins. and a  
final inc. of 0 Min.

Final Shut-In  
Breakdown: 21 Inc.  
of 3 mins. and a  
final inc. of 0 Min.

Point Mins.	Press.	Point Minutes	Press.	Point Minutes	Press.	Point Minutes	Press.
P 1 0	<u>18</u>	0	<u>31</u>	0	<u>53</u>	0	<u>54</u>
P 2 5	<u>21</u>	3	<u>456</u>	5	<u>53</u>	3	<u>466</u>
P 3 10	<u>24</u>	6	<u>501</u>	10	<u>53</u>	6	<u>508</u>
P 4 15	<u>27</u>	9	<u>516</u>	15	<u>53</u>	9	<u>523</u>
P 5 20	<u>30</u>	12	<u>524</u>	20	<u>54</u>	12	<u>530</u>
P 6 25	<u>31</u>	15	<u>531</u>	25	<u>54</u>	15	<u>534</u>
P 7 30	<u>31</u>	18	<u>535</u>	30	<u>54</u>	18	<u>537</u>
P 8 35		21	<u>537</u>	35		21	<u>538</u>
P 9 40		24	<u>538</u>	40		24	<u>539</u>
P 10 45		27	<u>539</u>	45		27	<u>540</u>
P 11 50		30	<u>540</u>	50		30	<u>541</u>
P 12 55		33	<u>541</u>	55		33	<u>541</u>
P 13 60		36	<u>541</u>	60		36	<u>542</u>
P 14 65		39	<u>542</u>	65		39	<u>542</u>
P 15 70		42	<u>542</u>	70		42	<u>542</u>
P 16 75		45	<u>543</u>	75		45	<u>543</u>
P 17 80		48		80		48	
P 18 85		51		85		51	
P 19 90		54		90		54	
P 20 95		57		95		57	
100		60	<u>543</u>	100		60	<u>543</u>

# FORMATION TEST REPORT



Home Office:

Wichita, Kansas 67201

P.O. Box 1599

Phone (316) 262-5861

COMPANY RANGE OIL COMPANY, INC. LEASE & WELL NO. #5 CHURCH SEC. 13 TWP. 23S RGE. 5E TEST NO. 1 DATE 11/21/85

WESTERN TESTING CO. INC.  
SUBSURFACE PRESSURE SURVEY

DATE: 11-21-85 TICKET #6163  
 CUSTOMER: RANGE OIL COMPANY INC. LEASE: CHURCH  
 WELL: 5 TEST: 1 GEOLOGIST: G.F. GENSCH  
 ELEVATION (KB): 1502 FORMATION: LANSING  
 SECTION: 13 TOWNSHIP: 23S  
 RANGE: 5E COUNTY: BUTLER STATE: KANSAS  
 GAUGE SN #5666 RANGE: 3950 CLOCK: 12

INTERVAL TEST FROM: 1576 FT TO: 1586 FT TOTAL DEPTH: 1586 FT  
 DEPTH OF SELECTIVE ZONE: FT  
 PACKER DEPTH: 1571 FT SIZE: 6 3/4 IN PACKER DEPTH: 1576 FT SIZE: 6 3/4 IN  
 PACKER DEPTH: FT SIZE: IN PACKER DEPTH: FT SIZE: IN

DRILLING CONTRACTOR: RANGE DRLG. RIG #2  
 MUD TYPE: CHEMICAL VISCOSITY: 35  
 WEIGHT: 9.1 WATER LOSS (CC): 12.0  
 CHLORIDES (P.P.M.): 1000  
 JARS - MAKE: SERIAL NUMBER:  
 DID WELL FLOW? NO REVERSED OUT? NO  
 DRILL COLLAR LENGTH: 178 FT I.D.: 2.25 IN  
 WEIGHT PIPE LENGTH: FT I.D.: IN  
 DRILL PIPE LENGTH: 1378 FT I.D.: 3.8 IN  
 TEST TOOL LENGTH: 20 FT TOOL SIZE: 5 1/2 OD IN  
 ANCHOR LENGTH: 10 FT SIZE: 5 1/2 OD IN  
 SURFACE CHOKE SIZE: 3/4 IN BOTTOM CHOKE SIZE: 3/4 IN  
 MAIN HOLE SIZE: 7 7/8 IN TOOL JOINT SIZE: 4 1/2 XH IN

BLOW: WEAK BLOW THROUGHOUT TEST.

RECOVERED: 2 FT OF: FREE OIL (34 SPEC. GRAVITY).  
 RECOVERED: 50 FT OF: OIL CUT WATERY MUD (5% OIL).  
 RECOVERED: FT OF: CHLORIDES 10000 PPM.  
 RECOVERED: FT OF:  
 RECOVERED: FT OF:  
 RECOVERED: FT OF:  
 RECOVERED: FT OF:  
 RECOVERED: FT OF:  
 RECOVERED: FT OF:

REMARKS:

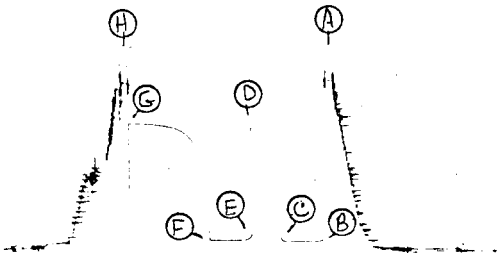
TIME SET PACKER(S): 12:15 PM TIME STARTED OFF BOTTOM: 3:15 PM  
 WELL TEMPERATURE: 76 °F  
 INITIAL HYDROSTATIC PRESSURE: (A) 766 PSI  
 INITIAL FLOW PERIOD MIN: 30 (B) 18 PSI TO (C) 31 PSI  
 INITIAL CLOSED IN PERIOD MIN: 60 (D) 543 PSI  
 FINAL FLOW PERIOD MIN: 30 (E) 53 PSI TO (F) 54 PSI  
 FINAL CLOSED IN PERIOD MIN: 60 (G) 543 PSI  
 FINAL HYDROSTATIC PRESSURE (H) 766 PSI



6164

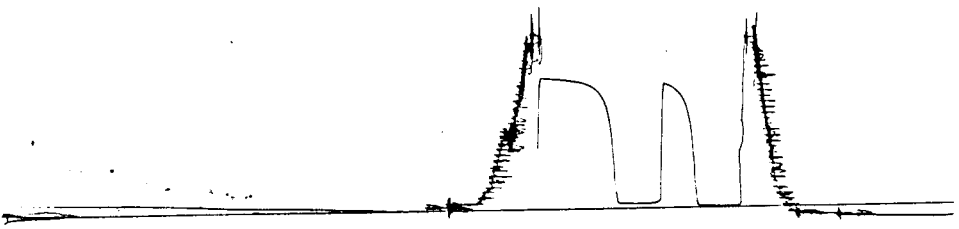
DST#2

Lot # 6164  
0



DST # 2  
L 114

Ykt. # 6164  
I





WESTERN TESTING CO., INC.
FORMATION TESTING

TICKET NO 6164

P. O. BOX 1599 WICHITA, KANSAS 67201
PHONE (316) 262-5861

Elevation 1502 KB Formation KC Eff. Pay Ft.

District Augusta Date 11-22-85 Customer Order No.

COMPANY NAME Range Oil Co Inc.

ADDRESS 240 Page Cr. 220 W. Douglas Wichita, Kans. 67202

LEASE AND WELL NO. Church #5 COUNTY Butler STATE KS. Sec. 13 Twp 23S Rge. 5E

Mail Invoice To Same Co. Name Address No. Copies Requested 1

Mail Charts To Same #5 Church Address No. Copies Requested 5

Formation Test No. 2 Interval Tested From 1838 ft. to 1873 ft. Total Depth 1873 ft.

Packer Depth 1833 ft. Size 6.75 in. Packer Depth - ft. Size - in.

Packer Depth 1838 ft. Size 6.75 in. Packer Depth - ft. Size - in.

Depth of Selective Zone Set

Top Recorder Depth (Inside) 1864 ft. Recorder Number 5666 Cap. 3950

Bottom Recorder Depth (Outside) 1868 ft. Recorder Number 3354 Cap. 4200

Below Saddle Recorder Depth - ft. Recorder Number - Cap. -

Drilling Contractor Range #2 Drill Collar Length 178 I. D. 2.25 in.

Mud Type Chem Viscosity 35 Weight Pipe Length - I. D. - in.

Weight 9.3 Water Loss 10 cc. Drill Pipe Length 1640 I. D. 3.8 in.

Chlorides 1400 P.P.M. Test Tool Length 20 ft. Tool Size 5.5 in.

Jars: Make - Serial Number - Anchor Length 35 ft. Size 5.5 in.

Did Well Flow? NO Reversed Out NO Surface Choke Size .75 in. Bottom Choke Size .75 in.

Main Hole Size 7 7/8 in. Tool Joint Size 4 1/2 in.

Blow: Very weak 20 Min initial

Very weak 7 Min intermittent to 10 Min on Final

Recovered 10 ft. of Very slight oilcut mud with SKIM (1/8 inch) oil on top

Recovered - ft. of

Recovered - ft. of

Recovered - ft. of

Recovered - ft. of

Chlorides - P.P.M. Sample Jars used 1 Remarks: Read outside chart

Time On Location 8:30 A.M. Time Pick Up Tool 10:15 A.M. Time Off Location - A.M.

Time Set Packer(s) 11:15 A.M. Time Started Off Bottom 1:45 P.M. Maximum Temperature 84°

Initial Hydrostatic Pressure (A) 990 P.S.I.

Initial Flow Period Minutes 30 (B) 55 P.S.I. to (C) 55 P.S.I.

Initial Closed In Period Minutes 30 (D) 685 P.S.I.

Final Flow Period Minutes 30 (E) 65 P.S.I. to (F) 65 P.S.I.

Final Closed In Period Minutes 60 (G) 705 P.S.I.

Final Hydrostatic Pressure (H) 930 P.S.I. 3354

COMPANY TERMS

Western Testing Co., Inc. shall not be liable for damages of any kind to the property or personnel of the one for whom a test is made or for any loss suffered or sustained directly or indirectly through the use of its equipment, of its statements or opinion concerning the results of any test. Tools lost or damaged in the hole shall be paid at cost by the party for whom the test is made.

All charges subject to 12% interest after 60 days from date of invoice. Any expense incurred for collection will be added to the original amount.

Test Approved By Gary F. Gensch Signature of Customer or his authorized representative

Western Representative Allen Edgington

FIELD INVOICE

Table with 2 columns: Item and Amount. Items include Open Hole Test (\$550), MISRUN, Straddle Test, Jars, Selective Zone, Safety Joint, Standby, Evaluation, Extra Packer, Circ. Sub., Mileage, Fluid Sampler, Extra Charts, Insurance, Telecopier, and TOTAL.

Handwritten initials OSOS

**WESTERN TESTING CO., INC.**  
**Pressure Data**

Date 11-22-85 Test Ticket No. 6164  
 Recorder No. 3354 Capacity 4200 Location \_\_\_\_\_ Ft.  
 Clock No. \_\_\_\_\_ Elevation \_\_\_\_\_ Well Temperature 84 °F

Point	Pressure	Time Given	Time Computed
A Initial Hydrostatic Mud	<u>944</u> P.S.I.	<u>11:15 A</u>	<u>1:45 P</u>
B First Initial Flow Pressure	<u>55</u> P.S.I.	<u>30</u> Mins.	<u>30</u> Mins.
C First Final Flow Pressure	<u>55</u> P.S.I.	<u>30</u> Mins.	<u>24</u> Mins.
D Initial Closed-in Pressure	<u>687</u> P.S.I.	<u>30</u> Mins.	<u>30</u> Mins.
E Second Initial Flow Pressure	<u>59</u> P.S.I.	<u>60</u> Mins.	<u>60</u> Mins.
F Second Final Flow Pressure	<u>59</u> P.S.I.		
G Final Closed-in Pressure	<u>706</u> P.S.I.		
H Final Hydrostatic Mud	<u>926</u> P.S.I.		

*Read outside chart!*

**PRESSURE BREAKDOWN**

**First Flow Pressure**  
 Breakdown: 7 Inc.  
 of 5 mins. and a  
 final inc. of 0 Min.

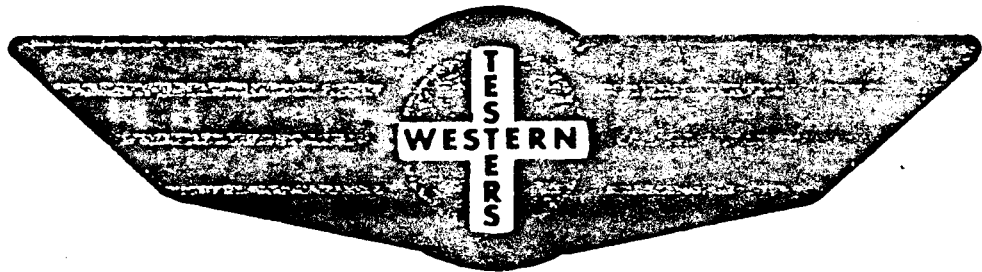
**Initial Shut-In**  
 Breakdown: 9 Inc.  
 of 3 mins. and a  
 final inc. of 0 Min.

**Second Flow Pressure**  
 Breakdown: 7 Inc.  
 of 5 mins. and a  
 final inc. of 0 Min.

**Final Shut-In**  
 Breakdown: 21 Inc.  
 of 3 mins. and a  
 final inc. of 0 Min.

Point Mins.	Press.	Point Minutes	Press.	Point Minutes	Press.	Point Minutes	Press.
P 1 0	<u>55</u>	0	<u>55</u>	0	<u>59</u>	0	<u>59</u>
P 2 5		3	<u>216</u>	5		3	<u>232</u>
P 3 10		6	<u>386</u>	10		6	<u>402</u>
P 4 15		9	<u>512</u>	15		9	<u>510</u>
P 5 20		12	<u>586</u>	20		12	<u>575</u>
P 6 25		15	<u>630</u>	25		15	<u>614</u>
P 7 30	<u>55</u>	18	<u>657</u>	30	<u>59</u>	18	<u>641</u>
P 8 35		21	<u>677</u>	35		21	<u>659</u>
P 9 40		24	<u>687</u>	40		24	<u>672</u>
P10 45		27		45		27	<u>680</u>
P11 50		30		50		30	<u>688</u>
P12 55		33		55		33	<u>692</u>
P13 60		36		60		36	<u>695</u>
P14 65		39		65		39	<u>698</u>
P15 70		42		70		42	<u>700</u>
P16 75		45		75		45	<u>702</u>
P17 80		48		80		48	<u>703</u>
P18 85		51		85		51	<u>704</u>
P19 90		54		90		54	<u>705</u>
P20 95		57		95		57	<u>706</u>
100		60		100		60	<u>706</u>

# FORMATION TEST REPORT



Home Office:

Wichita, Kansas 67201

P.O. Box 1599

Phone (316) 262-5861

MPANY RANGE OIL COMPANY, INC. LEASE & WELL NO. #5 CHURCH SEC. 13 TWP. 23S RGE. 5E TEST NO. 2 DATE 11/22/85

WESTERN TESTING CO. INC.  
SUBSURFACE PRESSURE SURVEY

DATE: 11-22-85 TICKET #6164  
CUSTOMER: RANGE OIL COMPANY INC. LEASE: CHURCH  
WELL: 5 TEST: 2 GEOLOGIST: G.F. GENSCH  
ELEVATION (KB): 1502 FORMATION: KANSAS CITY  
SECTION: 13 TOWNSHIP: 23S  
RANGE: 5E COUNTY: BUTLER STATE: KANSAS  
GAUGE SN #3354 RANGE: 4200 CLOCK: 12

INTERVAL TEST FROM: 1838 FT TO: 1873 FT TOTAL DEPTH: 1873 FT  
DEPTH OF SELECTIVE ZONE: FT  
PACKER DEPTH: 1833 FT SIZE: 6 3/4 IN PAKER DEPTH: 1838 FT SIZE: 6 3/4 IN  
PACKER DEPTH: FT SIZE: IN PAKER DEPTH: FT SIZE: IN

DRILLING CONTRACTOR: RANGE DRLG. RIG #2  
MUD TYPE: CHEMICAL VISCOSITY: 35  
WEIGHT: 9.3 WATER LOSS (CC): 10.0  
CHLORIDES (P.P.M.): 1400

JARS - MAKE: SERIAL NUMBER:  
DID WELL FLOW? NO REVERSED OUT? NO  
DRILL COLLAR LENGTH: 178 FT I.D.: 2.25 IN  
WEIGHT PIPE LENGTH: FT I.D.: IN  
DRILL PIPE LENGTH: 1640 FT I.D.: 3.8 IN  
TEST TOOL LENGTH: 20 FT TOOL SIZE: 5 1/2 OD IN  
ANCHOR LENGTH: 35 FT SIZE: 5 1/2 OD IN  
SURFACE CHOKE SIZE: 3/4 IN BOTTOM CHOKE SIZE: 3/4 IN  
MAIN HOLE SIZE: 7 7/8 IN TOOL JOINT SIZE: 4 1/2 XH IN

BLOW: INITIAL FLOW PERIOD VERY WEAK BLOW  
FOR 20 MINUTES. FINAL FLOW PERIOD  
VERY WEAK BLOW FOR 7 MINUTES;  
INTERMITTENT BLOW TO 10 MINUTES.

RECOVERED: 10 FT OF: VERY SLIGHT OIL CUT MUD  
RECOVERED: FT OF: WITH SKIM (1 INCH) OF OIL ON TOP.  
RECOVERED: FT OF:  
RECOVERED: FT OF:  
RECOVERED: FT OF:  
RECOVERED: FT OF:  
RECOVERED: FT OF:  
RECOVERED: FT OF:  
RECOVERED: FT OF:

REMARKS: READ OUTSIDE CHART #3354.

TIME SET PACKER(S): 11:15 AM TIME STARTED OFF BOTTOM: 1:45 PM  
WELL TEMPERATURE: 84 °F  
INITIAL HYDROSTATIC PRESSURE: (A) 944 PSI  
INITIAL FLOW PERIOD MIN: 30 (B) 55 PSI TO (C) 55 PSI  
INITIAL CLOSED IN PERIOD MIN: 24 (D) 687 PSI  
FINAL FLOW PERIOD MIN: 30 (E) 59 PSI TO (F) 59 PSI  
FINAL CLOSED IN PERIOD MIN: 60 (G) 706 PSI  
FINAL HYDROSTATIC PRESSURE (H) 926 PSI

