

Kans. S. 5 T. 23 S., R. 11 E.

Greenwood County

White Eagle O. & R. Company

R.P. Seelye Lease #5 Farm

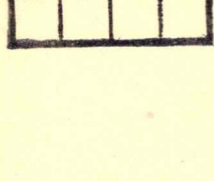
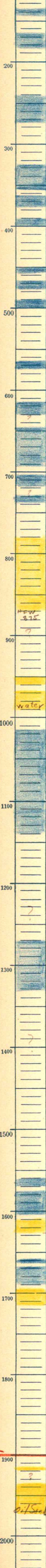
T.D.

Pro - 250 bbls.

Relation by

drilled 1-16-2-6-23

213



wh sd

wh sd Plugged Back 1915-20wh to 1971 1/2

1934

oil sd.

Oil Seal 1973 1/2 - T.D.