

26581

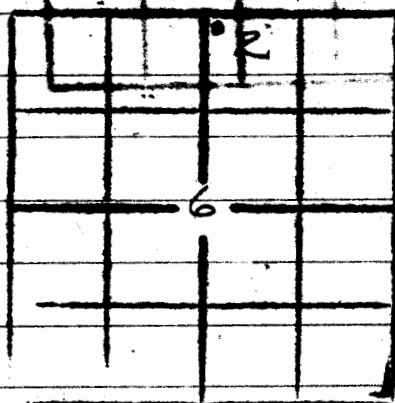
6-24-10E

2

comm 5-14-24
comp. 6-10-24
prod. 90 bbls

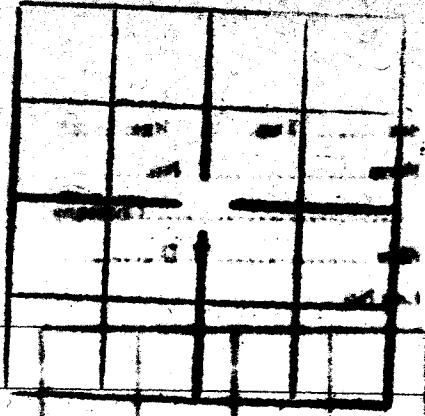
12-57
10-1246
8-1530
6-1430
5-2279

6-24-10E
cart weight
Missouri
Kans.



sail dk sf 6-10
 L whhd 20
 sh blk sf 28
 L whhd 30
 sh " sf 60
 L " 65
 sh dk sf 80
 L whhd 85
 sh " sf 110
 L " " 130
 sh " 200
 L " 205
 sh bl 270
 sh " sf 290
 L whhd 300
 sh " sf 325
 L " hd 335
 sh 350
 L hd 355
 sh blk 370
 L 375
 sh blk sf 395
 L whhd 405
 sh " sf 420
 " " " 445
 sh 450
 shls 475
 sh blk 500
 mud wh 525
 sh blk sf 540
 L wh " 560
 sh dk " 600
 L whhd 635

sh blk 675
 Blk L 695
 L wh sf 715
 sh blk " 720
 L whhd 750
 sh " sf 780
 L " hd 800
 sh 815
 L 865
 sh wh sf 875
 L " hd 885
 sh " sf 910
 L " 925
 sh 940
 sh " sf 970
 L " hd 990
 sh blk sf 1000
 L whhd 1035
 sh blk 1040
 blk L sf 1070
 sh wh sf 1235
 sh 1246
 L whhd 1250
 S HF vt 1290
 sh blk 1305
 Big L 1355
 sh sf 1365
 L whhd 1520



sh	sh	1635
←	wh hd	1655
sh	hd	1660
Bkn	←	1720
←	wh hd	1790
Bkn	← sf	1800
sh		1930
←	wh hd	1935
sh	sf	1960
←	hd	1975
sh		2020
←	wh hd	2025
sh	Bkn sf	2070
←		2045
sh		2070
sh		2260
S		2265
sh	Bkn	2270
sh		2279
S		2361
⊕		2364