

15-073-24032-00-00

David B. Griffin, RG, Consulting Geologist

1502 W. 27th Terrace
Lawrence, Kansas 66046

Ph. (785) 842-3665
Cell (785) 766-0099
Fax (785) 856-3935

Geological Wellsite Report

June 19, 2006

Black Star 231 Corp
Two Pershing Square, Suite 900
Kansas City, Missouri 64108

Attn: Jim Pryor, President

RE: Geological Wellsite Report
Snyder No. 1
Approx. 3630' fsl, 990' fel of SE Corner of Section
Spot, 25' SE of NW SE NE
Sec. 28, T24S-R11E
Greenwood County, Kansas

Dear Mr. Pryor:

The following report on the subject well includes general well information and geological data based on drill bit penetration rate and microscopic examination of rotary drill cuttings from 1150 feet to a total depth of 1993 feet from the ground surface. A detailed log plotting both drilling time and cuttings description follows the Well Information section. Subsea corrected depth measurements on the sample log were based on an estimated ground level elevation of 1106 obtained from the original staked location lying approximately 25 feet to the northwest of the drilled location that was surveyed at 1106.35 feet above mean sea level.

Well Information

Well Name:	Snyder No. 1	Elev.:	GL 1106
Location:	NW SE NE, Approx. 3630' fsl, 990' fel of section Section 28, T24S R11E Greenwood County, Kansas	GPS lat long Coord:	N 37.93609 W -96.19969
API No.:	073-24032-00-00	Field:	Wildcat

RECEIVED
JUL 05 2006
KCC WICHITA

Operator: Black Star 231 Corp.
Two Pershing Square
2300 Main Street, Suite 900
Kansas City, MO 64108
KS License No.: 31772

Owner: Jim Pryor

Drilling Co.: Three Rivers Exploration
538 Road 20
Olpe, Kansas, 66865
KS License No.: 33217

Owner: Dave Farthing

Status: Dry Hole

Spud Date: 6-10-06

Total Depth: 1993 feet

Date Reached TD: 6-16-06

Plugged Date: 6-16-06

Significant Oil Shows: None

Plugging Orders: Cement plugs at approx. 1854', 730' and from 150' to ground surface

Surface Casing Info: 11 1/4" bit, 40' of 8 5/8", Cemented with Portland cement

Drilling Notes: 7 7/8" PDC (drag) bit from 40' to 1993'
(6) 6 1/4" drill collars
4 1/2" by 31' drill pipe
Drill stem: approx. 35 RPM, bit weight approx. 6,000 pounds
Mud pump, 2-Cylinder, 7 1/4" by 14" stroke
Drilling time provided from 1150' to 1933"
Sample travel time to surface (lag), approx. 1 minute per 100 feet

Mud System: Native fresh water to 1699', Chemical mud from 1699' to 1993' TD
Fudd Mud, Inc. provided daily monitoring of chemical drilling mud

Geological Supervision:
David Griffin, RG, provided wellsite supervision from 1150' to 1993'
(TD) from June 14, 2006 to June 16, 2006
Samples microscopically examined from 1150' to 1993'.

RECEIVED
JUL 05 2006
KCC WICHITA

Geological Sample Datums:

Snyder No. 1, Geological Sample Tops			Nesbitt No. 1	
	GL Depth	Subsea	Structural Comparison	Sec 28, NW NE SE
Base of Kansas City Group	1297	-191	+2	-193
Marmaton Group	1420	-314	-1	-313
Peru SS	absent	absent	absent	absent
Base of Fort Scott (Cherokee)	1605	-499	+14	-513
U. Squirrel SS, (5')	1613	-507	+11	-518
Ardmore LS	1679	-573	unknown	unknown
Cattleman SS, (5')	1703	-597	+16	-613
Chat, (15')	1926	-820	unknown	unknown
Mississippian LS	1941	-835	-37	-798
Mississippian Dol	1970	-864	-31	-833
Total Depth	1993	-887		-938

Major Oil Zones of Interest

Peru Sandstone:

Absent

Upper Squirrel Sandstone:

1613 to 1618,

Sandstone, light gray, very fine grained quartz, subangular, good porosity, with dark gray silty shale laminations, no oil show or odor.

Cattleman Sandstone:

1703 to 1708,

Sandstone, lt gray, very fine grained quartz, subangular, micaceous, fair to good porosity, with light gray siltstone laminations, no oil show or odor, accessory minerals present.

Bartlesville Sandstone:

Absent

Mississippian Limestone:

1941 to 1969,

Limestone, tan to buff, predominately very fine crystalline, minor medium crystalline, poor to fair porosity upper 20 feet, lower 8 feet good intercrystalline porosity, fair to good vugular porosity, very minor amounts of dolomite, common chert, white to clear to light gray, no show of oil, no odor.

RECEIVED

JUL 05 2006

KCC WICHITA

Mississippian Dolomite:

1970 to 1993,

Dolomite, tan, very fine crystalline, fair to good crystalline porosity upper 14 feet, fair to good vugular porosity, poor porosity in lower 9 feet, occasionally streak of limestone, no odor, no show of oil.

Logs: No wireline logs were obtained on this well

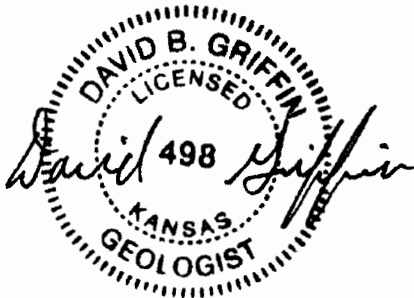
Structural Comparisons:

Geological tops for Snyder No. 1 were compared to Nesbitt No. 1, a Mississippian show hole lying in the NW NE SE of section 28, of T 24S-R11E. The structural comparison of the two wells is listed in the table showing the Geological Sample Tops. Even though the structure of base of the Fort Scott Formation was 14 feet higher in Snyder No. 1, the primary target, the Mississippian Limestone came in 37 feet lower and lacked any oil shows. The Upper Squirrel and Cattleman sandstones were structurally higher in Snyder No. 1; however, the structure and thicknesses were insufficient for the formation of an oil trap.

Recommendations:

Due to the lower structural position of the primary target, the Mississippian and a lack of any oil show in the porosity zones in the Mississippian limestones or dolomites or overlying Pennsylvanian sandstones, the well was plugged and abandoned as a dry hole.

Respectfully Submitted,

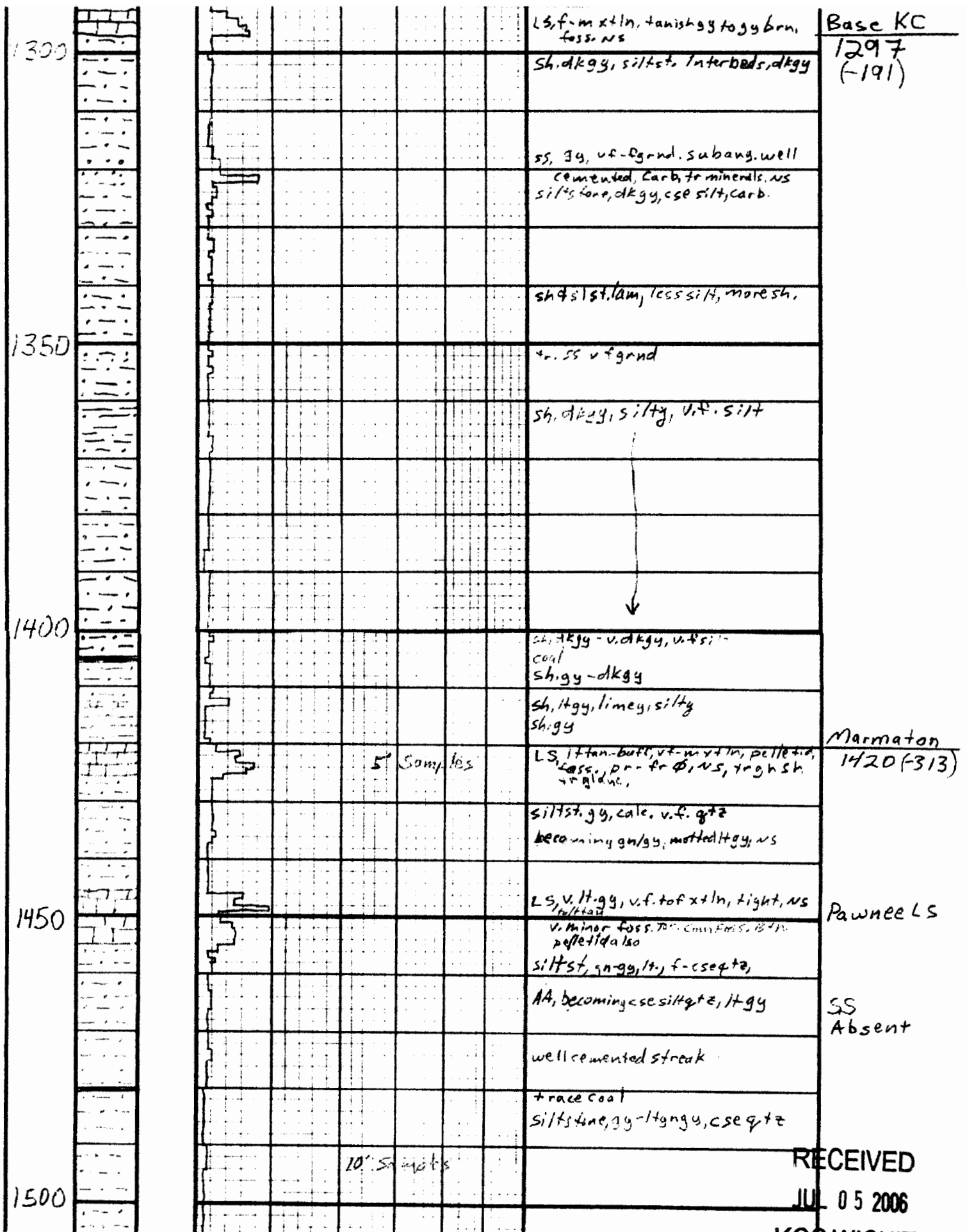


David B. Griffin, R.G.
Consulting Geologist

RECEIVED
JUL 05 2006
KCC WICHITA

Depth	Lithology	Shows	Drilling Time in Minutes per Foot Rate of Penetration Decreases						Sample Descriptions	Remarks
			5	10	15	20	25	30		
1150			10' So samples							Samples lagged approx. 1 mi. from
								LS, 1/2 gy - 1/4 tan to 1/2, micrite		
								sh, ggy, silty, mica		
								LS, 1/4 tan to 1/2 gy, f-m xtl, f-usil, f-OS pr φ, NS, com calc. xtl, tractent itgy		
								LSAA, fossiliferous, chert + tan-lyg minor, fr xtl φ, NS		
								LS, off-wh, v-f med xtl, cal xtl, s, soft, fr-gd φ		
1200								LS, becoming itgy.		
								LS, AA, f-cs v+ln, fr-gd φ, calc xtl, NS, mottled		
								LS, ggy, mostly, f+ln.		
								sh, ggy, calc		
								sh, Blk + dkgy		
								LS, off-wh - vltgy, mostly f+ln some med xtl, fr φ, NS		
1250								LS, gy to tan, dense, NS, v-f med xtl, minor foss, or oil stain, 2 pieces no odor		
								shale, blk to dkgy, calc		
								LS, buff to vlt. gy, f-cs xtl, fr φ, trace oil stain, no odor, abndt. foss.		
								LS becoming v. f+ln dense, no foss		
								shale, ggy, carb, silty, cse silt		
								LS, f-m xtl, tanishgy to gy brn, foss, NS		
1300								sh, dkgy, silty, Interbeds, dkgy	Base KC 1297 (-191)	
								ss, gy, v-f-gnd, subang. well cemented, carb, fr minerals, NS siltstone, dkgy, cse silt, carb.		
								sh, silt, lam, less silt, more sh.		

RECEIVED
JUL 05 2006
KCC WICHITA



LS, f. m x ln, tanish gy to gy brn, foss. ns

Base KC

1300

sh. dkgy, siltst. Interbeds, dkgy

1297
(-191)

ss, gy, v.f. - gnd. subang. well cemented, Carb. fr minerals. ns siltstone, dkgy, cse silt, carb.

1350

sh & silt lam, less silt, more sh.

tr. ss v f gnd

sh, dkgy, silty, v.f. silt

1400

sh, dkgy - v. dkgy, v.f. silt coal sh, gy - dkgy

sh, ltgy, limey, silty sh, gy

Marmaton
1420 (-313)

5' Samples

LS, lt tan-buff, vt-m v ln, pelletid, calc. pr - fr ϕ , ns, trough sh v. gnd.

siltst. gy, calc. v.f. qtz becoming gn/gy, mottled ltgy, ns

1450

LS, v. ltgy, v.f. to f x ln, tight, ns v. minor foss. 70' - 80' FMS, 15' - 20' pelletid also

Pawnee LS

siltst, gn-gy, lt, f-cse qtz,

AA, becoming cse silt qtz, ltgy

SS
Absent

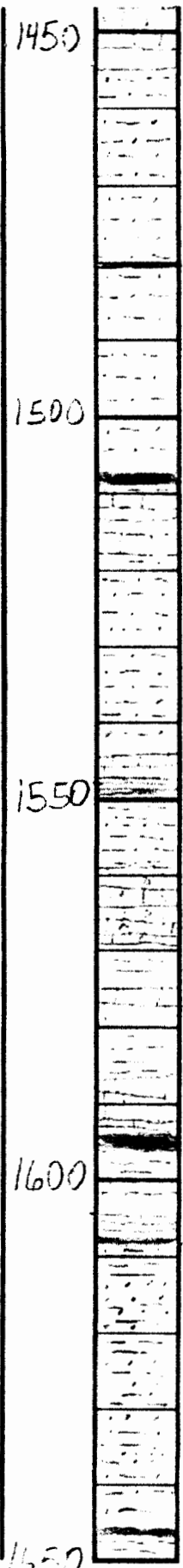
well cemented streak

trace coal siltstone, gy - ltgy, cse qtz

10' Samples

1500

RECEIVED
JUL 05 2006
KCC WICHITA



1450
1500
1550
1600
1650

					v. minor foss. 70p. Com Foss. Btr 2 eff. 1 da lso siltst, an-gg, lt. f-cse qtz
					AA, becoming cse siltst, ltgy
					well rounded streak
					+ trace coal siltstone, gy-ltgy, cse qtz
				10' Sample	
					coal
					LS, earthy, brown, arg. lenticles
					LS, ltgy, v f-m xtn, pr φ, NS Some foss.
					Siltstone, calc, lime, gy-ltgy
					AA
					LS, 2y-brn, f-cse xtn, foss, fr φ, NS sh. blk
					sh. gy, some silt
					LS, ltgy, tan, m. xtn, gray, abund. foss., fr φ, NS
				5' Sample	sh. gy-gygy
					LS, v ltgy, v xtn, pr φ, glauc.
					sh gy, silty, minor blk
				Esake sticking	LS, ltgy-th, f-m xtn, pr φ
					sh, blk Codi, LS, 100-100, f-m xtn, pr φ
					sh, blk, calc
					sh, gy-dkgy, silty, ltgy low some calc. streaks
					SS, v. f. grnd ltgy, qtz, subang. qtz
				Crack Stuck	sd φ - 1 sh d leg glau, N. S. Modoc, No Fluor. AA becoming micaceous
					siltstone, dkgy, high carbont mic, minor SSAA low
					Coal

Pawnee LS
SS
Absent
Fort Scott LS Fm.
Base Ft. Scott
1605 (1479)
Squirrel SS
1613 (507)

RECEIVED
JUL 05 2006
KCC WICHITA

