

15-207-2141-0000

David B. Griffin, RG, Consulting Geologist

1502 W. 27th Terrace
Lawrence, Kansas 66046

Ph. (785) 842-3665
Cell (785) 766-0099
Fax (785) 856-3935

Geological Wellsite Report

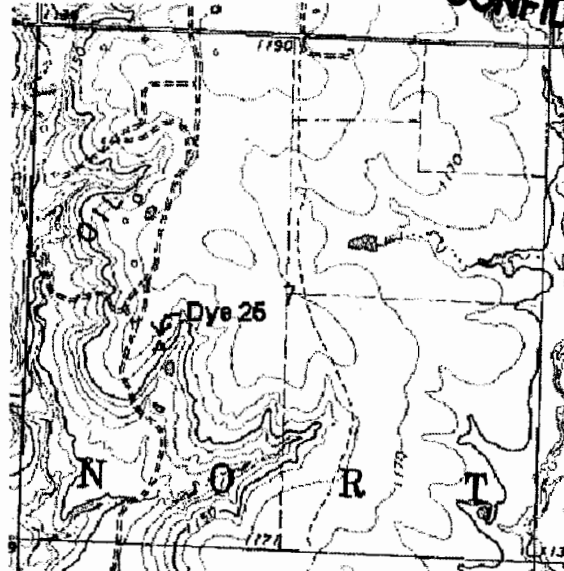
KCC
MAY 21 2007
CONFIDENTIAL

May 7, 2007

Haas Petroleum, LLC
800 W. 47th St, Suite 409
Kansas City, MO 64112
Attn: Mark Haas

EnerJex Resources, Inc.
7300 W. 110th St., 7th Floor
Overland Park, KS 66210
Attn: Brad Kramer

RE: Geological Wellsite Report
Dye No. 25, Proposed Injector Well
SW NW NE SW4
Section 7, T 24S – R 14E
Woodson County, Kansas



The following report on the subject well includes detailed information and geological data based on microscopic examination of rotary drill cuttings and drill bit rate of penetration from 1300' to a total depth of 1780' below the kelly bushing. A detailed log that plots drilling time, sample cuttings description and the geological tops is included. Subsea corrected geological tops were based on a kelly bushing elevation of 1167 which is 7' above the surveyed ground level elevation of 1160' above sea level.

Daily Progress

May 1, 2007; Spud Date, Set approximately 40' of 8 5/8-inch surface casing.
May 2, 2007; 4 AM, Drill out from under surface, drill from 40' to 920'.
May 3, 2007; Drill from 920' to TD at 1780, Set 4 1/2-inch casing and Cemented in.

RECEIVED
KANSAS CORPORATION COMMISSION

MAY 21 2007

CONSERVATION DIVISION
WICHITA, KS

Well Information

Well Name: Dye No. 25 **Elev.:** Survey; GL 1160, KB 1167

Location: SW NW NE SW4 (from topo)
App. 2150' fsl, 1050' fwl
Section 7, T 24S – R 14E
Woodson County, Kansas

GPS lat long Coord: N37.97299, W-95.91706

API No.: 15-207-27141-00-00 **Field:** Winterschied

Operator: Haas Petroleum, LLC

Contact Person: Mark Haas

Drilling Co.: Skyy Drilling
Yates Center, Kansas, 66865
KS Operator License No.: 33557

KCC
MAY 21 2007
CONFIDENTIAL

Drilling Co. Owner: Mark Haas **Tool Pusher:** Ben Harrell

Cement Co.: Consolidated Oil Well Service Co.
KS Operator License No.: 04996

Status: Pending Completion **Spud Date:** May 1, 2007

Total Depth: 1780 KB **Date Reached TD:** May 3, 2007

Plugged Date: Not Plugged

Surface Casing: Hole drilled with 12 1/4" bit, 40' of 8 5/8",
Cemented with approximately 30 sacks of class "A" cement with 2% gel
and 3% CaCl₂ on May 1, 2007.

Drilling Notes: 6 3/4-inch (Altera) PDC Bit, from 40' to 1780'
(6) 5 3/4-inch drill collars
3 1/2" by 31' (average) drill pipe
Mud pump, 2-Cylinder, 6" x 12" stroke
Drilling time provided from 1300' to 1780' TD
Sample travel time to surface (lag), approx. 1 minute per 125 to 150 feet
Drill stem: approx. 60 RPM for Pennsylvanian Rocks and 40 RPM for
Mississippian Rocks, Bit weight varied

Mud Program: Native fresh water mud to 1200', fresh water gel mud from 1200' to TD
Fudd Mud, Inc. provided daily monitoring of chemical drilling mud,
Preferred properties; 33 to 36 vis, 8.9 to 9.4 wt.

RECEIVED
KANSAS CORPORATION COMMISSION

MAY 21 2007

CONSERVATION DIVISION
WICHITA, KS

Geological Supervision:

David Griffin, RG, provided wellsite supervision on May 3, 2007 for depths from 1300' to 1780' TD
Samples microscopically examined for the entire interval.

Hydrocarbon Shows: Cher. U. Squirrel Sandstone, 1300' to 1307', Show of Heavy Tarry Oil
Miss. Limestone, 1689' to 1694', Slight Show of Oil
Miss. Dolomite, 1694' to 1707', Pay Zone, High Gravity Oil
Miss. Cherty Dolomite, 1707' to 1718', Slight Show of Oil

Logs: No Open-Hole logs were ran for this well,
It is anticipated that a Cased-Hole Gamma-Ray Neutron log will be ran for correlation and perforation considerations.

Cored Interval: No cores were cut for this well.

Geological Datums:

KCC
MAY 21 2007
CONFIDENTIAL

<i>Dye No.25, Geological Tops</i>			<i>Dye 24, app. 330' SW</i>	<i>Dye 23, app. 435' W</i>
	KB Sample Depth		Surveyed KB Elev. 1163, Spl., Subsea	Surveyed KB Elev. 1173, Spl., Subsea
	Depth	Subsea		
Surveyed KB Elev. 1167				
Shallow Gas Sand	NA		916	921
Base of Kansas City Group	NA		194	189
Cherokee FM	1298	-131	-132	-129
U. Squirrel SS	1300	-133	-134	-137
Ardmore LS	1399	-232	-235	-235
Bartlesville SS	1554	-387	-397	-381
Chat	1653	-486	-497	-495
Mississippian LS	1673	-506	-507	-510
Miss. Dol, Pay Zone, 13' Thick	1694	-527	-532	-547
Miss. LS 'B'	1764	-597	NDE	-603
Total Depth	1780	-613	-587	-607

Structural Comparisons:

Structural comparison of subsea corrected geological tops for Dye No. 25 to Dye No. 24 lying approximately 330' to the southwest indicates that the primary zone of interest, the Mississippian dolomite was 5 feet higher in structure. The dolomite was 13' thick with an excellent show of high gravity gassy oil.

RECEIVED
KANSAS CORPORATION COMMISSION

MAY 21 2007

CONSERVATION DIVISION
WICHITA, KS

Sample Observations of Major Zones of Interest

KCC
MAY 21 2007
CONFIDENTIAL

Upper Squirrel Sandstone:

1300' to 1308', 8' thick

Sandstone, gray, very fine grained, quartz, fair porosity, some tight streaks that are well cemented, slight show of heavy oil and tar, no odor, some oil is slow to bleed, other does not bleed at all, heat from light source facilitates bleeding, appears non-commercial, oil appears to be around 18 to 20 gravity.

Bartlesville Sandstone:

1554' to 1620',

Sandstone, light gray, very fine to fine grained with some loose medium size grains toward bottom, sub-angular quartz, carbonaceous and silty, minor mica, interbedded with dark gray shale, no show of oil, odor, or fluorescence.

Mississippian:

Limestone

1673' to 1694',

Limestone, cream to light tan, very fine, medium and coarse crystalline, grainstone, pelletal, poor to fair porosity, very minor quartz silt, slight odor, no show of oil, lower 5' from 1689' to 1694', has 3-15% fluorescent, minor show of free oil.

Dolomite

1694' to 1707', Pay Zone, 13'

Dolomite, calcitic, light tan to light tannish gray, very fine crystalline dolomite with fine and medium crystalline calcite, fair to good crystalline porosity, good vugular porosity, very strong odor, excellent show of free high gravity oil, 75 to 80% cuttings are fluorescent, two thin zones of chert with 25% fluorescence, much oil on surface of sample wash water.

Dolomite,

1707' to 1718', 11'

Dolomite, calcitic, tan to gray, very fine crystalline, fair crystalline and vugular porosity, slight odor, 3-15% of the cuttings have fluorescence, minor show of oil, 10 to 30% chert, white to light gray to tan.

RECEIVED
KANSAS CORPORATION COMMISSION

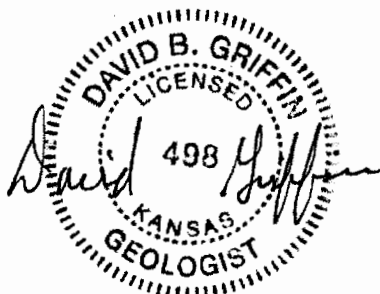
MAY 21 2007

CONSERVATION DIVISION
WICHITA, KS

Recommendations:

This well had an excellent pay zone section 13' thick and was 5' structurally higher than Dye 24 a proposed producer, 330' to the south. This well should be very effective as a water injection stimulation well. Therefore, 4 ½-inch casing was set and cemented with completion pending injection approval by the state.

Respectfully Submitted,



David B. Griffin, RG
Consulting Geologist

KCC
MAY 21 2007
CONFIDENTIAL

Attachment: Drilling Time, Sample Description and Geological Tops Log

RECEIVED
KANSAS CORPORATION COMMISSION

MAY 21 2007

CONSERVATION DIVISION
WICHITA, KS

Depth	Lithology	Shows	Drilling Time in Minutes per Foot Rate of Penetration Decreases							Well No: Dye 25 Location: SWNWNE SW4 Sec. 7-T24S-R14E	Pg. / of 2	
			5	10	15	20	25	30	Sample Descriptions		Datum/Elev.	Remarks
1300		heavy fatty oil	10' Samples							SS, gy, v.f. gnd, qtz, frg, some parts well cemented, show heavy oil & tar, some oil bleeds, No odor, 100% oil saturations	KB 1167, Surr.	Cherokee
5-3-07 7AM			Vis 34 wt 8.0							sh, dk gy		1298 (-131)
			60 RPM AB							LS, gy-dkgy, v.f. gnd, qtz, sandy		U. Squirrel SS
										LS, AA		1300 (-133)
										ss, v.f. gnd, pr-fog, silty, carb. mica, min. pyrr. siltstone, gy, sandy, carb. mica		
1350										sh, silty, dkgy, siltstone		
										AA		
										AA, less silt		
										coal, sh, ltgy		
										tr, LS, black		
										coal, sh, blk, coal seam on pit		Arclmore LS
1400										LS, cream-dkgy siltstone, ltgy		1399 (-252)
										sh, gy-dkgy, siltstone, ss lam		
										AA		
										coal		
										LS, tan, trace, siderite		
										sh, gy-dkgy, coal		
1450										LS, tan-lt brn coal		
										ss, ltgy, v.f. gnd, fr-gdb, carb. shale		
										sh, dkgy, silty, siltstone lam, carb. few ss, v.f. gnd lam		
										AA		
1500										AA		
										AA		
										AA		
										AA		
										AA		
5-3-07 11:25AM										AA		
1550												

MAY 2
CONFIDENTIAL

CONSERVATION DIVISION
WICHITA, KS

KCC
MAY 21 2007
CONFIDENTIAL

RECEIVED
KANSAS CORPORATION COMMISSION
MAY 21 2007

CONSERVATION DIVISION
WICHITA, KS

