

David B. Griffin, RG, Consulting Geologist

1502 W. 27th Terrace
Lawrence, Kansas 66046

Ph. (785) 842-3665
Cell (785) 766-0099
Fax (785) 856-3935

Geological Wellsite Report

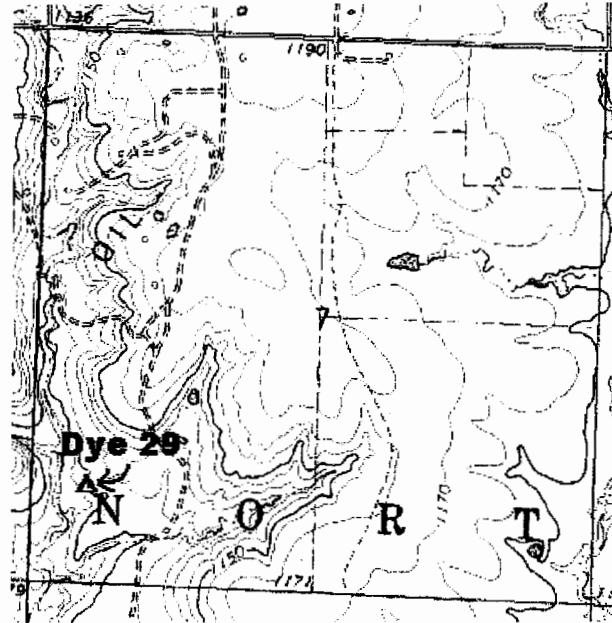
June 11, 2007

Haas Petroleum, LLC
800 W. 47th St, Suite 409
Kansas City, MO 64112
Attn: Mark Haas

EnerJex Resources, Inc.
7300 W. 110th St., 7th Floor
Overland Park, KS 66210
Attn: Brad Kramer

1003 FSL 552 FWL

RE: Geological Wellsite Report
Dye No. 29, Injector Well
CE2 NW SW SW4
Section 7, T 24S – R 14E
Woodson County, Kansas
15-207-27155



The following report on the subject well includes detailed information and geological data based on microscopic examination of rotary drill cuttings and drill bit rate of penetration from 1250' to a total depth of 1721' below the kelly bushing. A detailed log that plots drilling time, sample cuttings description and the geological tops is included. Subsea corrected geological tops were based on a kelly bushing elevation of 1104' which is 8' above the surveyed ground level elevation of 1095.48' above sea level.

Daily Progress

June 4, 2007; Spud Well, Set approximately 40' of 8 5/8-inch surface casing.

June 5, 2007; Drill out from under surface to 934'.

June 6, 2007; Drill from 934' to 1510'

June 7, 2007; Drill from 1510' to TD at 1721', Run open-hole log, Set and cement 4 1/2-inch casing.

RECEIVED
KANSAS CORPORATION COMMISSION

MAY 12 2008

CONSERVATION DIVISION
WICHITA, KS

Well Information

Well Name: Dye No. 29 **Elev.:** Survey; GL 1095.48', KB 1104'

Location: CE2 NW SW SW4 (from topo)
900' fsl, 1100' fwl (from survey)
Section 7, T 24S-R 14E
Woodson County, Kansas

GPS lat long Coord: N37.96984 W-95.92007

API No.: 15-207-27155-00-00 **Field:** Winterschied

Operator: Haas Petroleum, LLC

Contact Person: Mark Haas

Drilling Co.: Skyy Drilling
Yates Center, Kansas, 66865
KS Operator License No.: 33557

Drilling Co. Owner: Mark Haas **Tool Pusher:** Ben Harrell

Cement Co.: Consolidated Oil Well Service Co.
KS Operator License No.: 04996

Status: Pending Completion **Spud Date:** June 4, 2007

Driller Total Depth: 1721 KB **Date Reached TD:** June 7, 2007

Plugged Date: NA

Surface Casing: Hole drilled with 12 1/4" bit, 40' of 8 5/8",
Cemented with approximately 30 sacks of class "A" cement with 2% gel
and 3% CaCl₂ on June 4, 2007.

Drilling Notes: Fourth well with rebuilt 6 3/4-inch (Ultera) PDC Bit, from 40' to 1721'
(6) 5 3/4-inch drill collars
3 1/2" by 31' (average length) drill pipe
Mud pump, 2-Cylinder, 6" x 12" stroke
Drilling time provided from 1250' to TD
Sample travel time to surface (lag), approx. 1 min. per 125 to 150 feet

Mud Program: Native fresh water mud to 1200', fresh water gel mud from 1200' to TD
Fudd Mud, Inc. provided daily monitoring of chemical drilling mud,
Preferred properties; 33 to 36 vis, 8.9 to 9.4 wt.

RECEIVED
KANSAS CORPORATION COMMISSION

MAY 12 2008

CONSERVATION DIVISION
WICHITA, KS

Page 2 of 5

Dye No. 29
Wellsite Geology Report
By David Griffin, RG
June 11, 2007

Geological Supervision:

David Griffin, RG, provided wellsite supervision on June 6 to June 7, 2007 for depths from 1250' to 1721' TD
 Samples microscopically examined for the entire interval.

Hydrocarbon Shows: Cher.; U. Squirrel Sandstone, 1264' to 1287', Fair show of heavy tarry oil, fair amount of oil bleeds from sample.

Miss.; Limestone, 1628' to 1632', fair oil show in moldic and vugular porosity, up to 35% cuttings are bright green fluorescent, good odor, fair fluorescence scum of oil on wash water, slight fluorescent scum on sample bags.

Miss.; Dolomite, calcitic, 1636' to 1650', good vugular and crystalline porosity, very good showing of high gravity oil, 14' thick, strong odor, very good scum of oil washed out of cuttings, very good scum of oil on sample bags.

Logs: Open-Hole logs were run for this well by Log-Tech of Hays, Kansas with high resolution for the Mississippian section. A Cased-Hole Gamma-Ray Neutron log will also be obtained for correlation and perforation considerations.

Cored Interval: No cores were cut for this well.

Geological Datums:

<i>Dye No.29, Geological Tops</i>					Dye 21	Dye 28
Surveyed KB Elev. 1104	KB Sample Depth		KB Log Depth		<i>360' to the NNE</i>	<i>447' to the ESE</i>
	Depth	Subsea	Depth	Subsea	Surveyed KB Elev. 1124, Spl. Subsea	Estimated KB Elev. 1114, Log Subsea
Shallow (Gas?) Sand	188	916	188	916	898	916
Base of Kansas City Group	926	178	926	178	175	176
Cherokee FM	1260	-156	1256	-152	-145	-148
U. Squirrel SS	1264	-160	1265	-161	-147	-151
Ardmore LS	1368	-264	1364	-260	-249	-256
Cattleman SS	1376	-272	1374	-270	NA	-270
Bartlesville SS Zone	1480	-376	1476	-372	-377	-360
Chat Conglomerate	1608	-504	1602	-498	-495	-496
Mississippian LS	1622	-518	1617	-513	-508	-504
Miss. Dol, Pay Zone	1636	-532	1633	-529	-522	-523
Miss. LS 'B'	1673	-569	1670	-566	-567	-572
Total Depth	1721	-617	1716	-612	-587	-615

RECEIVED
 KANSAS CORPORATION COMMISSION

MAY 12 2008 Page 3 of 5

CONSERVATION DIVISION
 WICHITA, KS

Dye No. 29
 Wellsite Geology Report
 By David Griffin, RG
 June 11, 2007

Structural Comparisons:

Structural comparison of subsea corrected KB geological tops for Dye No. 29 to Dye No. 21 lying approximately 360' to the north-northeast indicates that the top of the Mississippian dolomite pay zone was 10 feet lower in structure.

Sample Observations of Major Zones of Interest

Upper Squirrel Sandstone:

1264' to 1287'

Shaley sandstone, gray, very fine grained, quartz, siltstone and gray silty shale interbeds toward bottom of zone, poor to fair porosity in sandstone, some tight streaks that are well cemented, fair show of heavy oil and tar, fair bleeding that is visible without magnification, slight odor, not fluorescent, most likely non-commercial but is the best show in this zone so far on the Dye lease, micaceous.

Cattleman Sandstone:

1376' to 1384'

Sandstone, light gray, very fine grained, fair porosity, micaceous, no show, no odor, no fluorescence, shaley in part.

Bartlesville Sandstone Zone:

1480' to 1540'

Sandstone, light gray to gray, Interbedded dark gray silty shale, thin bedded to laminated, very fine grained, sub-angular quartz, carbonaceous, silty, minor mica, no show of oil, odor, or fluorescence.

Mississippian:

Limestone

1622' to 1636'

Limestone, upper 5' is brown and weathered, lower portion is fresh cream to very light tan, fine to medium crystalline, pelletal grainstone, poor to fair crystalline porosity, thin beds of quartz siltstone with fine to medium grained well rounded quartz sand, based on the core of Dye 23, the siltstone probably is present in joints and fractures, fair vugular and moldic porosity from 1628' to 1632' with fair free oil show, 10% to 35% cuttings are bright green fluorescent in this zone, good odor, fair fluorescence scum on wash water, slight fluorescent scum on sample bags, the limestone also appears to contain some gray shale interbeds along with the siltstone.

RECEIVED
KANSAS CORPORATION COMMISSION

MAY 12 2008

CONSERVATION DIVISION
WICHITA, KS

Page 4 of 5

Dye No. 29
Wellsite Geology Report
By David Griffin, RG
June 11, 2007

Dolomite, Pay Zone

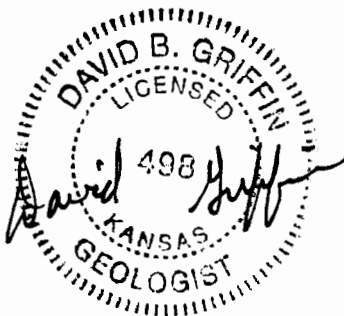
Best Pay from 1636' to 1650', 14'; oil show present from 1636' to 1655', 19'

Dolomite, calcitic, gray tan to light brown, very fine crystalline with fine crystalline calcite, fair to good crystalline porosity and fair to very good vugular porosity, very strong odor, very good show of free high gravity oil, oil show was present as deep as 1655', very good scum of oil washed out of cuttings with a very good scum of oil on sample bags, 60% to 95% of cuttings are bright green fluorescent from 1636' to 1650', minor chert, (10%), below 1640, crystals of dolomite and quartz filling some of the voids.

Recommendations:

This well had a nice approximate 14 foot thick pay zone section from 1636' to 1650' (sample) or 1633' to 1645' (open-hole log) with a very good showing of bleeding light gravity oil. Data from the open hole logs using a temperature corrected R_w value of 0.11 and m value of 2.0 result in preliminary saltwater calculations range from 52% to 74% in the center of the pay zone from 1637 to 1644 (log). The top of the dolomite pay zone was 10' structurally lower than in Dye No. 21, a new producer lying 360' to the north-northeast. Based on the sample observations and log calculations, Dye No. 29 should be very effective as an injector well. Therefore, 4 1/2-inch casing was set and cemented.

Respectfully Submitted,



David B. Griffin, RG
Consulting Geologist

Attachment: Drilling Time, Sample Description and Geological Tops Log

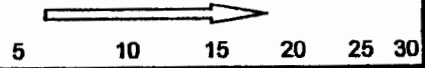
RECEIVED
KANSAS CORPORATION COMMISSION

MAY 12 2008

CONSERVATION DIVISION
WICHITA, KS

Well No: Dye 29
Location: 42 NW SWSW 4, 100' x 51'
SEC. 7, T24S-R14E

Drilling Time in Minutes per Foot
Rate of Penetration Decreases

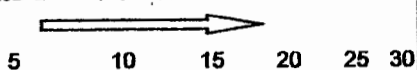


Depth	Lithology	Shows	Drilling Time in Minutes per Foot Rate of Penetration Decreases	Sample Descriptions	Remarks
1250 6-6-01 7:35 PM			10' samples 4 1/2 well with bit 6 3/4 hole	LS, Gray, sh sh, blk SS, gy, vfgnd, fr-fr fr show heavy oil, and tar mod. odor, sl. scum oil on wash water, fr bleeding, some pieces are soft & porous, some are tight w/ spotty show. not fluor. micaceous sh, gy, silty, carb, mica w/ few SS lam AA, 20% ss w/ oil show heavy tarry, but pops out, fr-odor sh, gy, silty, mica, carb, no ss	Cherokee 1260 (-156) U.S.G. SS 1264 (-160)
1300		fair show heavy oil + tar		LS, gy - dkgy brn, some sdy some tan also, tight sh, gy, silty, m, c, few lam hard ss, gy well cem. NS, 5% sh, vdkgy, AA, mica, 5% ss, NS minor lt brn clay flakes AA sh, vdkgy, less silt, 2% ss lam	
1350				sh, gy - dkgy, fr blk, coal sh, gy to blk LS, dkgy - brn, dense SS, lt gray, vfgnd, mica, abnd, fr fr, No odor, NS, No Fluor. trace, coal sh, ltgy - blk, SS lam, NS LS, trace, lt gray - gy, tan sh, ltgy - dkgy, siderite AA, tr coal AA, Lstr, tan sh, dkgy with SS & silt lam, mica, carb, 10-20% ss NS AA	Ardmore LS 1368 (-264) Cattleman SS 1376 (-272)
1400				sh, vdkgy to blk, some lt tan clay stone AA, v mica clay AA, mostlgy blk shale trace LS, dkgray sh, gy - blk, SS lam ltgy, 10% vfgnd, mica, fr fr NS, No odor AA, NS	Bartlesville SS 1480 (-376)
1450					
6-6-01 11:43 PM 1500					

Well No: Dye No. 29 496' total
Location: CER NWSWSW 4 1009' fsl
SEC. 7, T24S-R14E

Datum/Elev.
KB 1104, Surf

Drilling Time in Minutes per Foot
Rate of Penetration Decreases



Depth	Lithology	Shows	Drilling Time in Minutes per Foot Rate of Penetration Decreases	Sample Descriptions	Remarks
1500 6-6-07 11:43 PM			10' samples	Sh, dk gy, silty, carb, mica ss lam, 20-30% gy, vfgnd, fr NS or odor laminations	
				SS, lt gy, 70%, vfgnd, fr NS ripple laminated.	
				SS, lam, itgy, vf-fgnd; 50% ss NS sh is gy + mica + carb	
				AA, 50% ss, NS tr LS, tan-brn	
				sh, ltgy-gy, siderite, silt/lam vltgy	
1550				AA	
				sh, blk, coal few ss lam, ltgy, NS + fgnd, pyr. tight	
				more ss lam, no odor, NS, with sh, ltgy to blk mostly tr. coal	
				mostly blk to vdkgy shale, min vltgy clay	
			start 5' samples	tr. coal sh, vltgy clay, 40%, dkgy-blk 60% coal	
1600			Mud VIS 33 WT 7.2	sh, vltgy, blk sdy sh, siltst, sdy, f-m + 2 gns,	Chat Cal 1608(-50w)
				Conglomerate, chert 50%, lt tan-wh siltst, f-m + 2 sd, 5% ssd, sh-gg to blk	
			stop watch time	No show 60% silt, 30% chert, 10% shgy-dkgy	Miss LS 1622(-51B)
			1625 = 11:55	slight odor, No show, No Fluor	
			1625 = 5:10:20 CFS	LS, top is weathered br, f-x + ln silt streaks, min pyr, slt odor, No Flu. pr	
			1625 = 5:10:20 CFS	LS, cream-vlt tan, min. lt brn, pelle tal grains, fine fr vug oil in vugs, gd odor, small oil on wash wtr.	Miss Dol 1636(-532)
			1640 = 5:10:20 CFS	Dol, calc, gutants lt brn, fr-gd x + ln, b, fair-fgd vug, s, str odor, samples wash abnd oil, vgd scum on bag	Best Pay 1636-1650
			1645 = 5:10:20 CFS	AA, gd vug, incr. dk oil show much oil in sample, minor chert and x + ls below 1644.	
			1650 = 5:10:20 CFS	Dol, AA, washes little oil, 40-60% chert, fair odor, slt. scum of oil gd vug	
				Dol, calc, tan - tangly, gd x + ln, gd vug, No odor, v. slt. oil on man bag tr. chert, pyr.	
				Dol, v. calc, w/LS interbeds, ltgy to gy mottled, NS, gd vug, pyr.	Miss LS "B" 1673(-569)
				LS; 10%, Dol AA, NS	
				LS; 15%, Dol AA, NS	
				LS; 20%, Dol, some dk brn., NS	
				LS, 20%, Dol AA, NS	
				LS, 10%, NS	
1700				shale, tan LS cream to lt gy, mottled, f-x + ln, 50% Dol tan to dk gy-brn, NS	
				AA, chert 10%	
				LS, gy-brn, appears weathered "dirty" 30% chert, tan-gy-wh	Total Depth 1721(-647)
9:50 AM 6-7-09			open hole lugged by Log Tech, Inc.		
1750					

show oil in vugs
very good show free oil

OF FLUOR
SAMPLE
50 100