

OILFIELD RESEARCH LABORATORIES

April 12, 1952

Mr. M. C. Colt
Iola, Kansas

Dear Sir:

Attached hereto are the results of effective permeability tests made on the Cable Tool core taken from the Henninger "A" Lease, Well No. 18-WW, Allen County, Kansas, and submitted to our laboratory on April 3, 1952.

Very truly yours,

OIL FIELD RESEARCH LABORATORIES

Carl L. Pate

CLP:bl
c.c.

3-24-21E

Henninger "A" (8-WW

WPA 443 RGE 21E 25L 3

Oil Field Research Laboratories

SHOT RECOMMENDATION

Company M. C. Colt, M-T Project Lease Henninger "A" Well No. 18-WW

<u>Depth Interval, Feet</u>	<u>Feet of Sand</u>	<u>Size of Shell Inches</u>	<u>Qts./Ft.</u>	<u>Total Quarts</u>
606.0 - 612.0	6.0	4.0	2.5	15.0

Note: Recommended Packer Setting - 601.0 feet
Plug hole back to - - - - - 613.0 feet

OIL FIELD RESEARCH LABORATORIES
CHANUTE, KANSAS

LOG

Company M. C. Colt - M-T Project Lease Henninger "A" Well No. 18-WW

<u>Depth Interval,</u> <u>Feet</u>	<u>Description</u>
589.00 - 596.20	- Light brown fine grained micaceous sandstone.
596.20 - 598.00	- Brown fine grained micaceous sandstone.
598.00 - 599.30	- Brown fine grained slightly laminated micaceous shaley sandstone.
599.30 - 601.00	- Brown fine grained micaceous sandstone.
601.00 - 604.70	- Dark brown fine grained micaceous sandstone.
604.70 - 606.70	- Gray shale.
606.70 - 609.60	- Dark brown fine grained micaceous sandstone.
609.60 - 612.20	- Brown fine grained micaceous sandstone.
612.20 - 613.00	- Brown fine grained micaceous shaley sandstone.
613.00 - 616.00	- Dark fine grained micaceous sandstone.
616.00 - 617.60	- Dark fine grained micaceous carbonaceous sandstone.
617.60 - 618.50	- Laminated shale and sandstone.
618.50 - 622.00	- Dark fine grained micaceous carbonaceous slightly conglomeratic sandstone.
622.00 - 622.80	- Gray sandy shale.
622.80 - 634.00	- Gray shale.
634.00 - 635.40	- Cuttings.
635.40 - 636.45	- Cuttings containing shale and coal.
636.45 - 640.00	- Gray sandy shale.

Oil Field Research Laboratories
RESULTS OF PERMEABILITY AND POROSITY TESTS
TABLE I A

Company M. C. Colt, M-T Project Lease Henninger "A" Well No. 18-WW

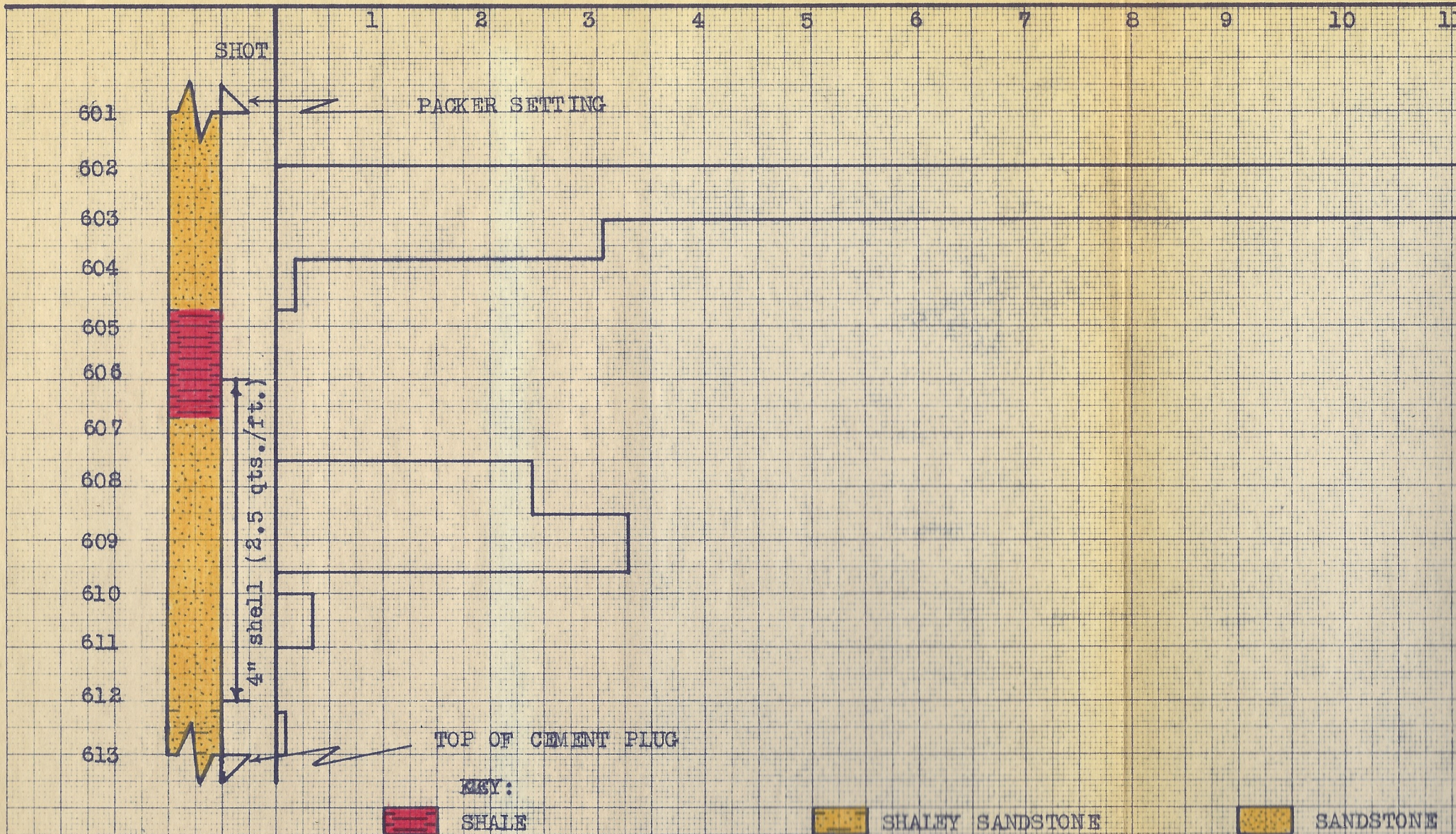
Sample No.	Depth, Feet	Permeability Millidarcys	Feet of Core		Permeability Capacity Ft. x Md.	Percent Porosity
			Ft.	Cum. Ft.		
1	602.50	16.45	1.00	1.00		
2	603.35	3.06	0.75	1.75		
3	604.10	0.180	0.95	2.70		
4	608.00	2.39	1.00	3.70		
5	609.05	3.28	1.10	4.80		
6	610.60	0.327	1.00	5.80		
7	612.35	0.087	0.80	6.60		

Oil Field Research Laboratories

SUMMARY OF PERMEABILITY & POROSITY TESTS

TABLE II A

Company	M. C. Colt, M-T Project		Lease	Henninger "A"		Well No.	18-WW
Depth Interval, Feet	Feet of Core Analyzed	Average Air Permeability, Millidarcys	Average Effective Permeability, Millidarcys	Permeability Capacity Ft. x Md.	Average Percent Porosity		
602.00 - 613.00	6.60	-	3.84	-	-		



M.C. COLT - M.T. PROJECT
HENNINGER "A" LEASE WELL NO. WW-18
ALLEN COUNTY, KANSAS

PERMEABILITY, IN MILLIDARCYS

8

9

10

11

12

13

14

15

16

E



SANDSTONE

PROJECT

WELL NO. WW-18

S

OILFIELD RESEARCH LABORATORIES
CHANUTE, KANSAS
APRIL 12, 1952