

15-015-22382

WESTERN TESTING COMPANY
SUBSURFACE PRESSURE SURVEY

29-24s-8E

DATE: 8/11/83 TICKET #1270
 CUSTOMER: R R ABDERHALDEN INC LEASE: NUTTLE ESTATE
 WELL: 5 TEST: 1 GEOLOGIST: R R ABDERHALDEN
 ELEVATION (KB): 1320 FORMATION: SQUIRREL SAND
 SECTION: 29 TOWNSHIP: 24S
 RANGE: 8E COUNTY: BUTLER STATE: KANSAS
 GAUGE SN #2606 RANGE: 4150 CLOCK: 12

INTERVAL TEST FROM: 2256 FT TO: 2290 FT TOTAL DEPTH: 2290 FT
 DEPTH OF SELECTIVE ZONE: FT
 PACKER DEPTH: 2251 FT SIZE: 6 3/4 IN PACKER DEPTH: 2256 FT SIZE: 6 3/4 IN
 PACKER DEPTH: FT SIZE: IN PACKER DEPTH: FT SIZE: IN

DRILLING CONTRACTOR: COMPANY TOOLS
 MUD TYPE: PREMIX VISCOSITY: 40
 WEIGHT: 9.2 WATER LOSS (CC): 12.8
 CHLORIDES (P.P.M.): 1500
 JARS - MAKE: NO SERIAL NUMBER:
 DID WELL FLOW? NO REVERSED OUT? NO
 DRILL COLLAR LENGTH: 450 FT I.D.: 2.25 IN
 WEIGHT PIPE LENGTH: FT I.D.: IN
 DRILL PIPE LENGTH: 1786 FT I.D.: 3.8 IN
 TEST TOOL LENGTH: 20 FT TOOL SIZE: 5 1/2 IN
 ANCHOR LENGTH: 34 FT SIZE: 5 1/2 IN
 SURFACE CHOKE SIZE: 3/4 IN BOTTOM CHOKE SIZE: 3/4 IN
 MAIN HOLE SIZE: 7 7/8 IN TOOL JOINT SIZE: 4 1/2 FH IN

BLOW: INITIAL FLOW PERIOD WEAK STEADY BLOW.
 FINAL FLOW PERIOD WEAK TO VERY WEAK BLOW.

RECOVERED: 86 FT OF: WATERY MUD.
 RECOVERED: FT OF:
 RECOVERED: FT OF:
 RECOVERED: FT OF:
 RECOVERED: FT OF:
 RECOVERED: FT OF:
 RECOVERED: FT OF:
 RECOVERED: FT OF:
 RECOVERED: FT OF:
 RECOVERED: FT OF:

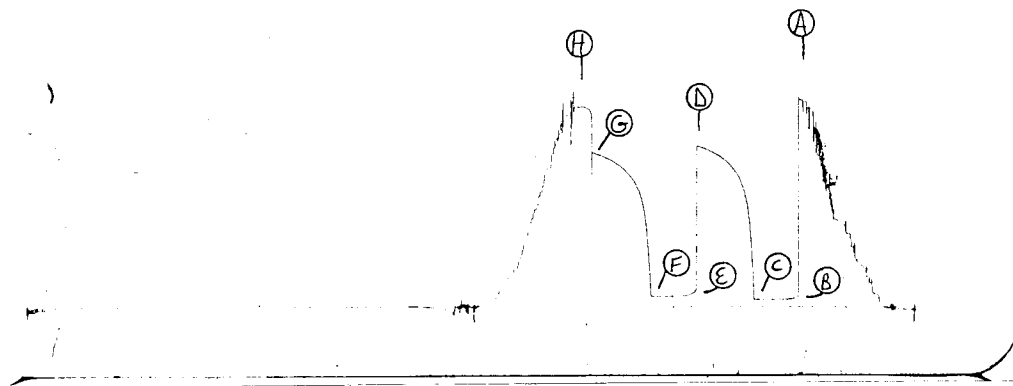
REMARKS:

TIME SET PACKER(S): 2:30 AM TIME STARTED OFF BOTTOM: 5:00 AM
 WELL TEMPERATURE: 98 °F
 INITIAL HYDROSTATIC PRESSURE: (A) 1110 PSI
 INITIAL FLOW PERIOD MIN: 30 (B) 42 PSI TO (C) 42 PSI
 INITIAL CLOSED IN PERIOD MIN: 42 (D) 866 PSI
 FINAL FLOW PERIOD MIN: 30 (E) 60 PSI TO (F) 60 PSI
 FINAL CLOSED IN PERIOD MIN: 45 (G) 831 PSI
 FINAL HYDROSTATIC PRESSURE (H) 1093 PSI

2606 DST #1

TKT # 1270

I



This is an actual photograph of recorder chart.

POINT	PRESSURE		
	Field Reading	Office Reading	
(A) Initial Hydrostatic Mud	1225	1110	PSI
(B) First Initial Flow Pressure	52	42	PSI
(C) First Final Flow Pressure	52	42	PSI
(D) Initial Closed-in Pressure	862	866	PSI
(E) Second Initial Flow Pressure	52	60	PSI
(F) Second Final Flow Pressure	52	60	PSI
(G) Final Closed-in Pressure	831	831	PSI
(H) Final Hydrostatic Mud	1173	1093	PSI