

KANSAS

State Geological Survey

1-25-12E

JUL

WELL COMPLETION REPORT AND DRILLER'S LOG

WICHITA BRANCH

S. 1 T. 25 R. 12 (E) W

API No. 15 - Greenwood - 15-073-21,804
County Number

Loc. W/2 of NE/4

County Greenwood

Operator Crude Oil Production Co., Inc.

Address 1721 Gage, Topeka, Kansas 66604

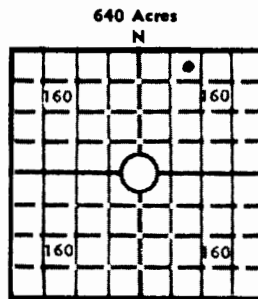
Well No. 1 Lease Name Moon

Footage Location 165' S of N line; 175' W of E line
feet from (N) (S) line feet from (E) (W) line

Principal Contractor Jackman & Jackman Geologist Hugh Gill

Spud Date 12-9-80 Date Completed 12-13-80 Total Depth 1750' P.B.T.D.

Directional Deviation Oil and/or Gas Purchaser Koch Oil Company



Locate well correctly Elev.: Gr. 1027

DF 1029 KB 1032

CASING RECORD

Report of all strings set - surface, intermediate, production, etc.

Table with 8 columns: Purpose of string, Size hole drilled, Size casing set (in O.D.), Weight lbs/ft., Setting depth, Type cement, Sacks, Type and percent additives. Rows include surface pipe and production pipe.

LINER RECORD

PERFORATION RECORD

Table with 6 columns: Top, ft., Bottom, ft., Sacks cement, Shots per ft., Size & type, Depth interval. Rows show perforation details for different depths.

TUBING RECORD

Table with 4 columns: Size, Setting depth, Packer set at, Depth interval. Row shows tubing details for 1526'-1536'.

ACID, FRACTURE, SHOT, CEMENT SQUEEZE RECORD

Table with 2 columns: Amount and kind of material used, Depth interval treated. Rows describe acid treatments and sand placement.

INITIAL PRODUCTION

Table with 4 columns: Date of first production, Producing method (flowing, pumping, gas lift, etc.), RATE OF PRODUCTION PER 24 HOURS (Oil, Gas, Water), Gas-oil ratio. Includes disposition of gas and producing interval.

INSTRUCTIONS: As provided in KCC Rule 82-2-125, within 90 days after completion of a well, one completed copy of this Drillers Log shall be transmitted to the State Geological Survey of Kansas, 4150 Monroe Street, Wichita, Kansas 67209.

Operator **Crude Oil Production** DESIGNATE TYPE OF COMP.: OIL, GAS, DRY HOLE, SWDW, ETC.:

Well No. **#1** Lease Name **Moon** **Oil**

S 1 T 25 R 12E

**WELL LOG**

Show all important zones of porosity and contents thereof; cored intervals, and all drill-stem tests, including depth interval tested, cushion used, time tool open, flowing and shut-in pressures, and recoveries.

SHOW GEOLOGICAL MARKERS, LOGS RUN, OR OTHER DESCRIPTIVE INFORMATION.

FORMATION DESCRIPTION, CONTENTS, ETC.	TOP	BOTTOM	NAME	DEPTH
			Base of Kansas City Squirrel	1001
			L. Cattleman	1385
			Burgess	1520
			Mississippian	1675
				1715

USE ADDITIONAL SHEETS, IF NECESSARY, TO COMPLETE WELL RECORD.

Date Received	<p><i>S. J. Felish</i> Signature</p> <p><i>President</i> Title</p> <p><i>8/24/81</i> Date</p>
---------------	---

1-92-19E

WELL LOG

State Geological Survey  
WICHITA BRANCH

11  
Jm

1-25-12E

Company           Crude Oil Prod. Co. Inc.  
Farm               Moon  
Well                1  
Location           165' FNL 175' FEL W<sub>2</sub> NE<sub>4</sub> 1-25-12E Greenwood Co., KS  
Commenced        12/9/80  
Completed         12/13/80  
Basing             105' 8 5/8" cemented with 60 sacks  
                    1749' 4 1/2" cemented with 175 sacks  
Contractor         Jackman & Jackman  
Production         Testing  
Total Depth        1750'

Lime & Shale	0	387
Lime	387	390
Water Sand	390	438
Shale	438	550
Lime	550	660
Shale	660	837
Lime	837	1026
Shale	1026	1047
Shale & Shells	1047	1301
Lime	1301	1251
Shale	1351	1700
Lime	1700	1750

0' is 4' above ground level.

STATE GEOLOGICAL SURVEY  
WICHITA BRANCH  
1980