

OILFIELD RESEARCH LABORATORIES

536 NORTH HIGHLAND - CHANUTE, KANSAS - PHONE HE1-2650

July 8, 1968

10-25-10E

Tec Drilling Company, Inc.
P.O. Box 693
El Dorado, Kansas 67042

Gentlemen:

Enclosed herewith are the results of tests run on the Rotary core taken from the Coffield Lease, Well No. 8, Woodson County, Kansas, and submitted to our laboratory on July 3, 1968.

This core is from a virgin territory and was sampled by a representative of Oilfield Research Laboratories. The samples were sealed in tin cans.

Your business is greatly appreciated.

Very truly yours,

OILFIELD RESEARCH LABORATORIES

Carl L. Pate

CLP:wd

5 c. - El Dorado, Kansas

Coffield 8

Oilfield Research Laboratories

RESULTS OF SATURATION & PERMEABILITY TESTS

TABLE 1-B

Company Tec Drilling Company, Inc. Lease Coffield Well No. 8

UPPER SQUIRREL SAND

Sample No.	Depth, Feet	Effective Porosity Percent	Percent Saturation		Oil Content Bbls. / A Ft.	Perm., Mill.	Feet of Sand		Total Oil Content	Perm. Capacity Ft. X md.
			Oil	Water			Ft.	Cum. Ft.		
1	876.1	14.3	60	35	666	7.7	1.5	1.5	999	11.55
2	878.3	18.9	52	29	762	1.4	0.9	2.4	686	1.26
3	879.1	15.1	41	43	480	5.7	0.9	3.3	432	5.13
4	880.1	15.4	31	53	371	0.78	1.0	4.3	371	0.78
5	881.1	16.4	48	45	611	0.82	1.0	5.3	611	0.82
6	882.1	15.3	49	43	582	1.3	1.0	6.3	582	1.30
7	883.1	15.6	38	47	460	2.1	1.0	7.3	460	2.10
8	884.1	16.7	55	41	712	2.9	1.2	8.5	854	3.48
9	885.1	15.9	42	40	518	6.6	0.8	9.3	415	5.28
10	886.1	14.8	43	50	494	2.8	1.0	10.3	494	2.80
11	887.1	18.5	60	29	862	6.8	0.9	11.2	612	7.76
12	888.1	18.7	51	26	740	15.	1.1	12.3	814	16.50
13	889.1	20.4	56	25	886	25.	1.0	13.3	886	25.00
14	890.1	18.1	47	22	660	37.	1.0	14.3	660	37.00
15	891.1	19.9	51	22	790	17.	1.0	15.3	790	17.00
16	892.1	20.8	55	23	888	9.4	1.0	16.3	888	9.40
17	893.1	20.8	55	26	888	21.	0.6	16.9	533	12.60
18	894.1	23.7	49	24	901	9.3	1.4	18.3	1262	13.02
LOWER SQUIRREL SAND										
19	914.1	14.3	49	36	544	Imp.	1.1	1.1	598	0.00
20	915.1	19.4	58	22	873	56.	1.0	2.1	873	56.00
21	916.1	19.9	59	26	911	6.8	1.4	3.5	1275	9.52
22	917.1	19.3	65	23	973	37.	0.8	4.3	778	29.60

Oilfield Research Laboratories

RESULTS OF SATURATION & PERMEABILITY TESTS

TABLE 1-B

Company Tec Drilling Company, Inc. Lease Coffield Well No. 8

Sample No.	Depth, Feet	Effective Porosity Percent	Percent Saturation			Oil Content Bbls. / A Ft.	Perm., Mill.	Feet of Sand		Total Oil Content	Perm. Capacity Ft. X md.
			Oil	Water	Total			Ft.	Cum. Ft.		
23	918.1	20.3	58	20	78	914	23.	1.0	5.3	914	23.00
24	919.1	21.1	58	19	77	950	250.	1.0	6.3	950	250.00
25	920.1	17.9	56	29	85	778	51.	1.0	7.3	778	51.00
26	921.1	20.2	48	20	68	752	64.	1.0	8.3	752	64.00
27	922.1	21.0	64	15	79	1042	57.	1.0	9.3	1042	57.00
28	923.1	21.6	54	16	70	905	95.	1.2	10.5	1086	114.00
29	924.1	20.5	62	12	74	986	81.	1.2	11.7	1182	97.20

Oilfield Research Laboratories

SUMMARY OF PERMEABILITY & SATURATION TESTS

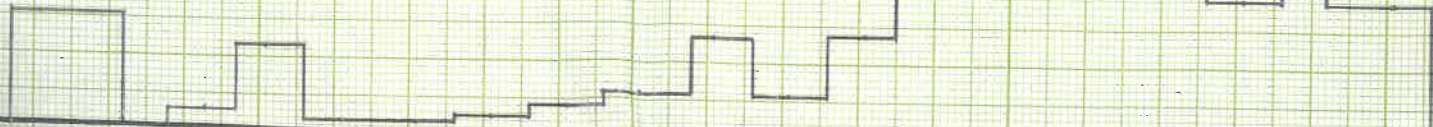
TABLE III

Company	Tec Drilling Company, Inc.	Lease	Coffield	Well No.	8
Depth Interval, Feet	Feet of Core Analyzed	Average Permeability, Millidarcys Sand	Permeability Capacity Fl. x Mdl.	Average Oil Content Bbl./A. Fl.	Total Oil Content Bbls./Acre
875.7 - 886.6	10.3	3.3	34.50	573	5,904
886.6 - 894.6	8.3	16.7	138.28	776	6,445
875.7 - 894.6	18.3	9.4	172.78	675	12,349
913.3 - 925.0	10.6	64.2	751.32	874	10,228
		Upper Squirrel Sand			
		Lower Squirrel Sand			
875.7 - 886.6	10.3	46.8	573	42.5	5,904
886.6 - 894.6	8.3	50.7	776	23.6	6,445
875.7 - 894.6	18.3	49.3	675	34.6	12,349
913.3 - 925.0	11.7	58.4	874	22.0	10,228
		Upper Squirrel Sand			
		Lower Squirrel Sand			

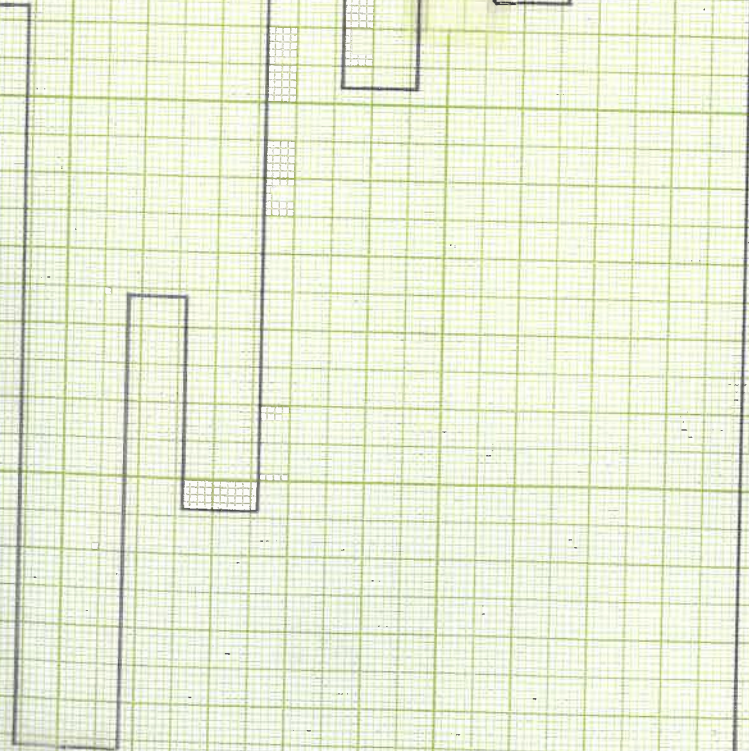
AIR PERMEABILITY, IN MILLIDARCYS

10 20 30 40 50 60 70 80 90 100 110 120

UPPER SQUIRREL SAND



LOWER SQUIRREL SAND



SHALY SANDSTONE CONTAINING AN ANGULAR FRACTURE
SANDY SHALE
O IMPERMEABLE TO AIR

G COMPANY

WELL NO. 8

TY, KANSAS

KEUFFEL & ESSER CO
MADE IN U.S.A.

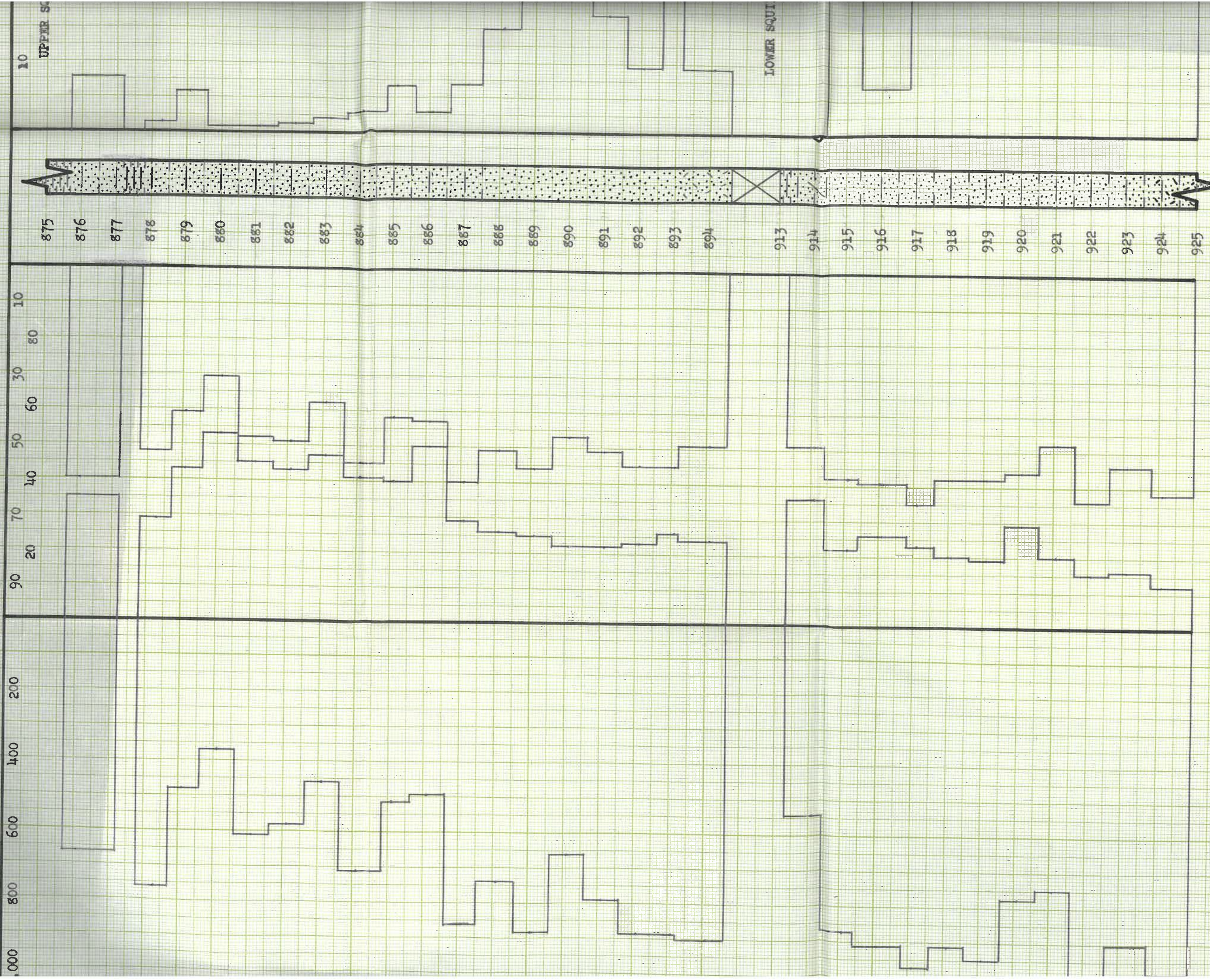
STANDARD
MILLIMETER
CROSS SECTION

250

OIL CONTENT,
BBLs./A. FT.

WATER SAT.,
PERCENT

OIL SAT.,
PERCENT



KEY:

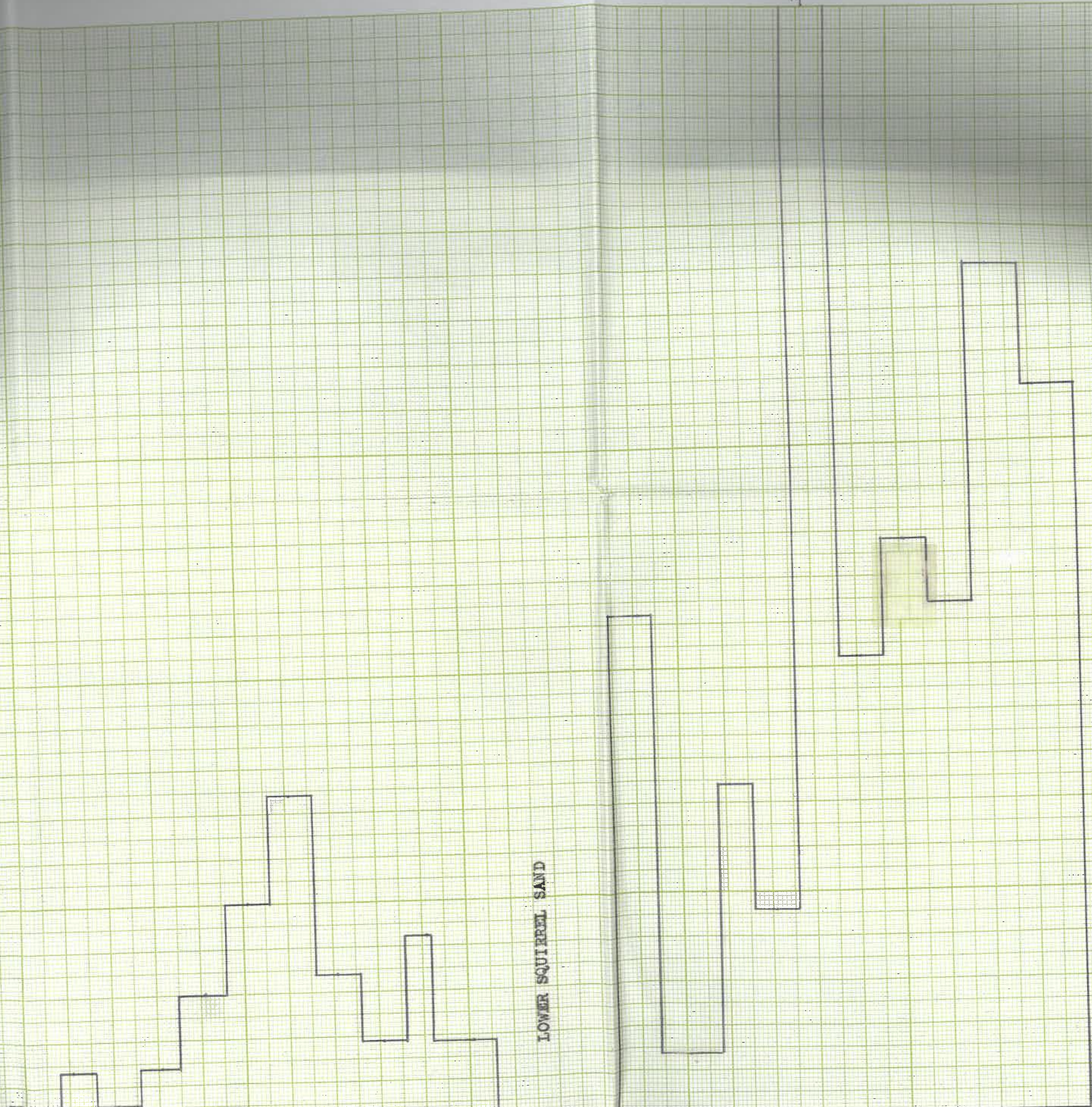
SANDSTONE

CARBONACEOUS SANDSTONE

CARBONACEOUS SHALY SANDSTONE

SHALY SANDSTONE

250



LOWER SQUIRREL SAND

SHALY SANDSTONE CONTAINING AN ANGULAR FRACTURE

SHALY SANDSTONE

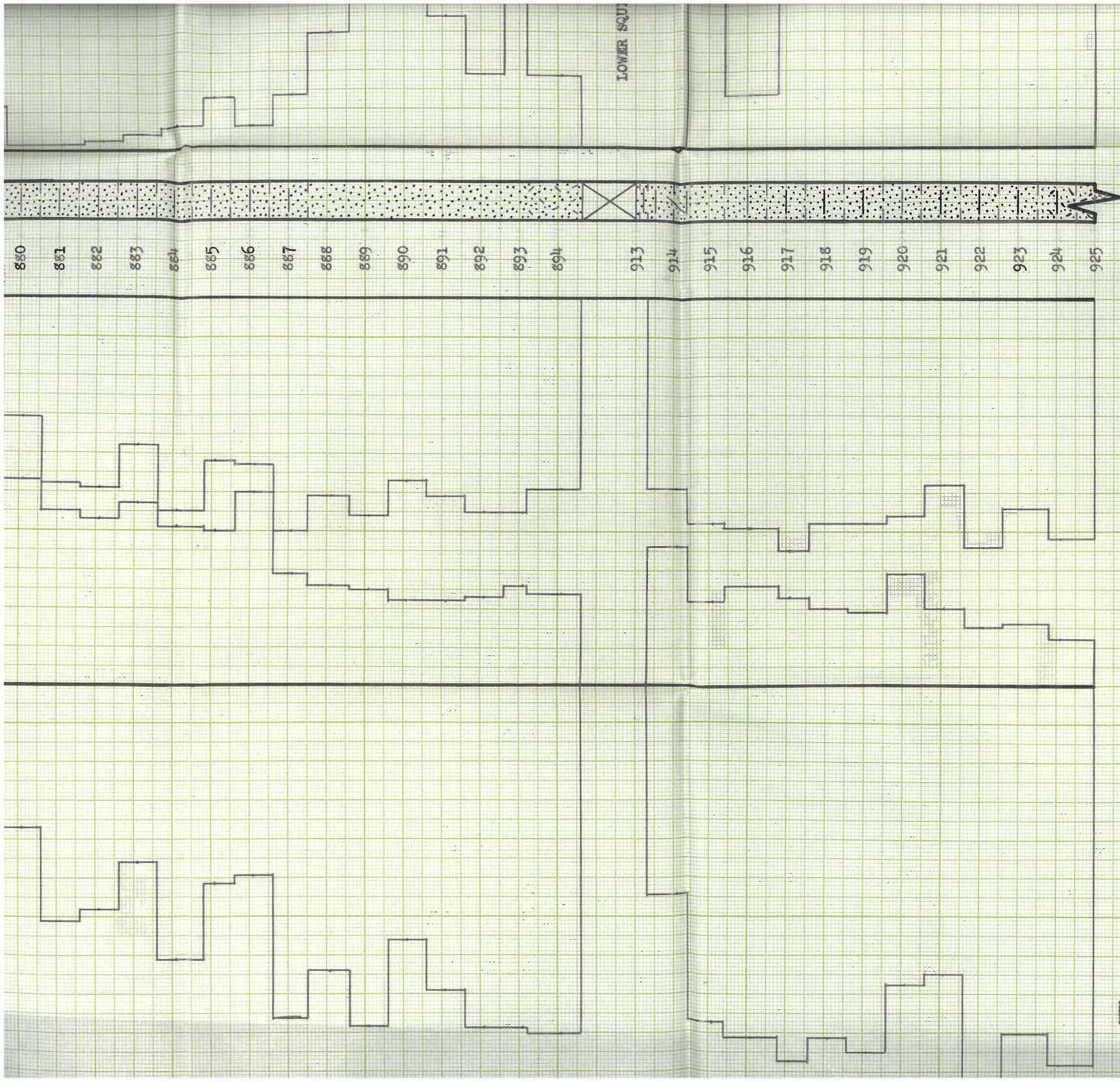
IMPERMEABLE TO AIR

NG COMPANY

WELL NO. 8

COUNTY, KANSAS

AVG. WATER SATURATION PERCENT	AVG. OIL CONTENT BELS./A.FT.	TOTAL OIL CONTENT BELS./ACRE	AVG. AIR PERMEABILITY, MILLIDARCY
42.5	573	5,904	3.3
23.6	776	6,445	16.7
34.6	675	12,349	9.4
<u>IRREL. SAND</u>			
22.0	874	10,228	64.2



KEY:

- SANDSTONE
- CARBONACEOUS SANDSTONE

- CARBONACEOUS SHALY SANDSTONE
- SHALY SANDSTONE

TEC DRILLING CON

GOFFIELD LEASE

WOODSON COUNTY, KANSAS

DEPTH INTERVAL, FEET	FEET OF CORE ANALYZED	AVERAGE PERCENT POROSITY	AVG. OIL SATURATION PERCENT	AVG. WATER SATURATION PERCENT	AY CO BBL
875.7 - 886.6	10.3	15.8	46.8	42.5	
886.6 - 894.6	8.3	19.5	50.7	27.6	
875.7 - 894.6	18.3	17.7	49.3	34.6	
<u>UPPER SQUIRREL SAND</u>					
913.3 - 925.0	11.7	19.9	58.4	22.0	
<u>LOWER SQUIRREL SAND</u>					