

15-015-23696

8-255-5E

### DIAMOND TESTING

P.O. Box 157  
HOISINGTON, KANSAS 67544  
(620) 653-7550 • (800) 542-7313  
STC 21108.D 354

Company Vess Oil Corporation Lease & Well No. Wilson "A" No. 428  
 Elevation 1390KB Formation Simpson Sand Effective Pay -- Ft. Ticket No. J1957  
 Date 10-13-06 Sec. 8 Twp. 25S Range 5E County Butler State Kansas  
 Test Approved By Kim Shoemaker Diamond Representative John C. Riedl

Formation Test No. 1 Interval Tested from 2,395 ft. to 2,428 ft. Total Depth 2,428 ft.  
 Packer Depth 2,390 ft. Size 6 3/4 in. Packer Depth -- ft. Size -- in.  
 Packer Depth 2,395 ft. Size 6 3/4 in. Packer Depth -- ft. Size -- in.  
 Depth of Selective Zone Set          ft.

Top Recorder Depth (Inside) 2,398 ft. Recorder Number 21108 Cap. 5,000 psi  
 Bottom Recorder Depth (Outside) 2,425 ft. Recorder Number 11017 Cap. 4,000 psi  
 Below Straddle Recorder Depth          ft. Recorder Number          Cap.          psi

Drilling Contractor C & G Drilling Company - Rig 1 Drill Collar Length 185 ft. I.D. 2 1/4 in.  
 Mud Type Chemical Viscosity 45 Weight Pipe Length -- ft. I.D. -- in.  
 Weight 9.3 Water Loss 10.0 cc. Drill Pipe Length 2,190 ft. I.D. 2 3/4 in.  
 Chlorides 1,100 P.P.M. Test Tool Length 20 ft. Tool Size 3 1/2 - IF in.  
 Jars: Make Bowen Serial Number Not Run Anchor Length 33 ft. Size 4 1/2 - FH in.  
 Did Well Flow? No Reversed Out No Surface Choke Size 1 in. Bottom Choke Size 5/8 in.  
 Main Hole Size 7 7/8 in. Tool Joint Size 4 - FH in.

Blow: 1st Open: Weak blow. Dead in 12 mins.  
2nd Open: Weak, intermittent surface blow throughout.

Recovered 10 ft. of free oil = .049200 bbls. (Gravity: 38 @ 60°)  
 Recovered 30 ft. of very slightly oil cut mud = .147600 bbls. (Grind out: 2%-oil; 17%-water; 97%-mud)  
 Recovered 40 ft. of TOTAL FLUID = .196800 bbls. Chlorides: 1,200 Ppm  
 Recovered          ft. of           
 Recovered          ft. of         

Remarks         

Time Set Packer(s)	<u>2:51</u>	<del>XXX</del> P.M.	Time Started Off Bottom	<u>4:51</u>	<del>XXX</del> P.M.	Maximum Temperature	<u>98°</u>
Initial Hydrostatic Pressure	(A)	<u>1191</u>			P.S.I.		
Initial Flow Period	Minutes	<u>30</u>	(B)	<u>34</u>	P.S.I.	to (C)	<u>43</u> P.S.I.
Initial Closed In Period	Minutes	<u>30</u>	(D)	<u>405</u>	P.S.I.		
Final Flow Period	Minutes	<u>30</u>	(E)	<u>45</u>	P.S.I.	to (F)	<u>54</u> P.S.I.
Final Closed In Period	Minutes	<u>30</u>	(G)	<u>397</u>	P.S.I.		
Final Hydrostatic Pressure	(H)	<u>1175</u>			P.S.I.		

## GENERAL INFORMATION

### Client Information:

Company: VESS OIL CORP

Contact: BILL HORIGAN

Phone: Fax: e-mail:

### Site Information:

Contact: KIM SHOEMAKER

Phone: Fax: e-mail:

### Well Information:

Name: WILSON "A" # 428

Operator: VESS OIL CORP

Location-Downhole: DST #1 2395 TO 2428

Location-Surface: S8/25S/5W BUTLER COUNTY

### Test Information:

Company: DIAMOND TESTING

Representative: JOHN RIEDL

Supervisor: KIM SHOEMAKER

Test Type: CONVENTIONAL Job Number: 354

Test Unit: 2

Start Date: 2006/10/13 Start Time: 07:13:00

End Date: 2006/10/13 End Time: 20:13:00

Report Date: 2006/10/13 Prepared By: JOHN RIEDL

Qualified By: KIM SHOEMAKER

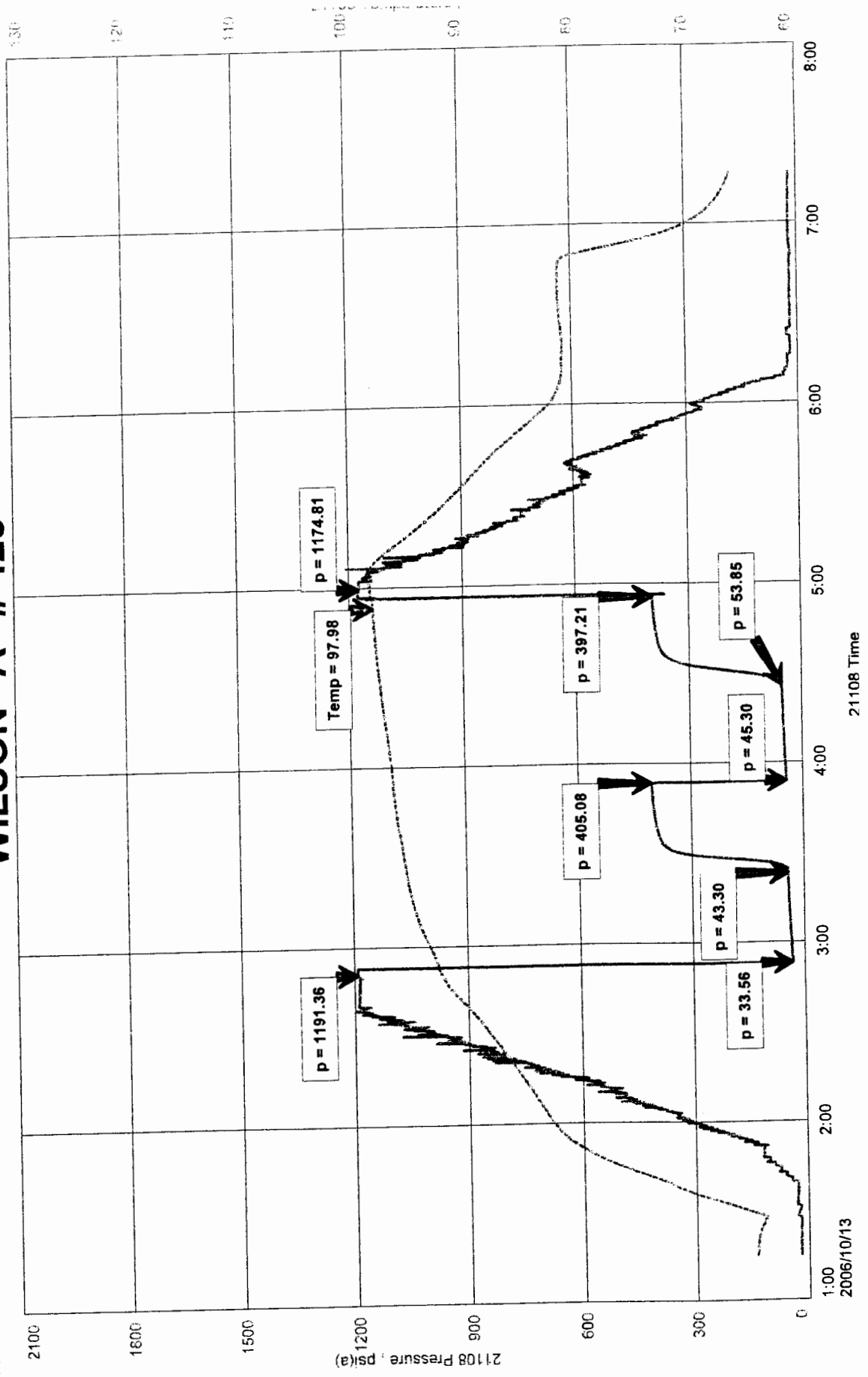
### Remarks:

RECOVERY: 10' FREE OIL (38 GRAVITY @ 60 DEGREES  
30' VSLOCM (2%OIL 1%WATER 97%MUD) CHLORIDES 1,200Ppm  
TOTAL FLUID REC. 40' IN DRILL COLLARS

WILSON "A" # 42  
Formation: SIMPSON SANI  
Job Number: 35

VESS OIL CORP  
DST #1 2395 TO 2428  
Start Test Date: 2006/10/13  
Final Test Date: 2006/10/13

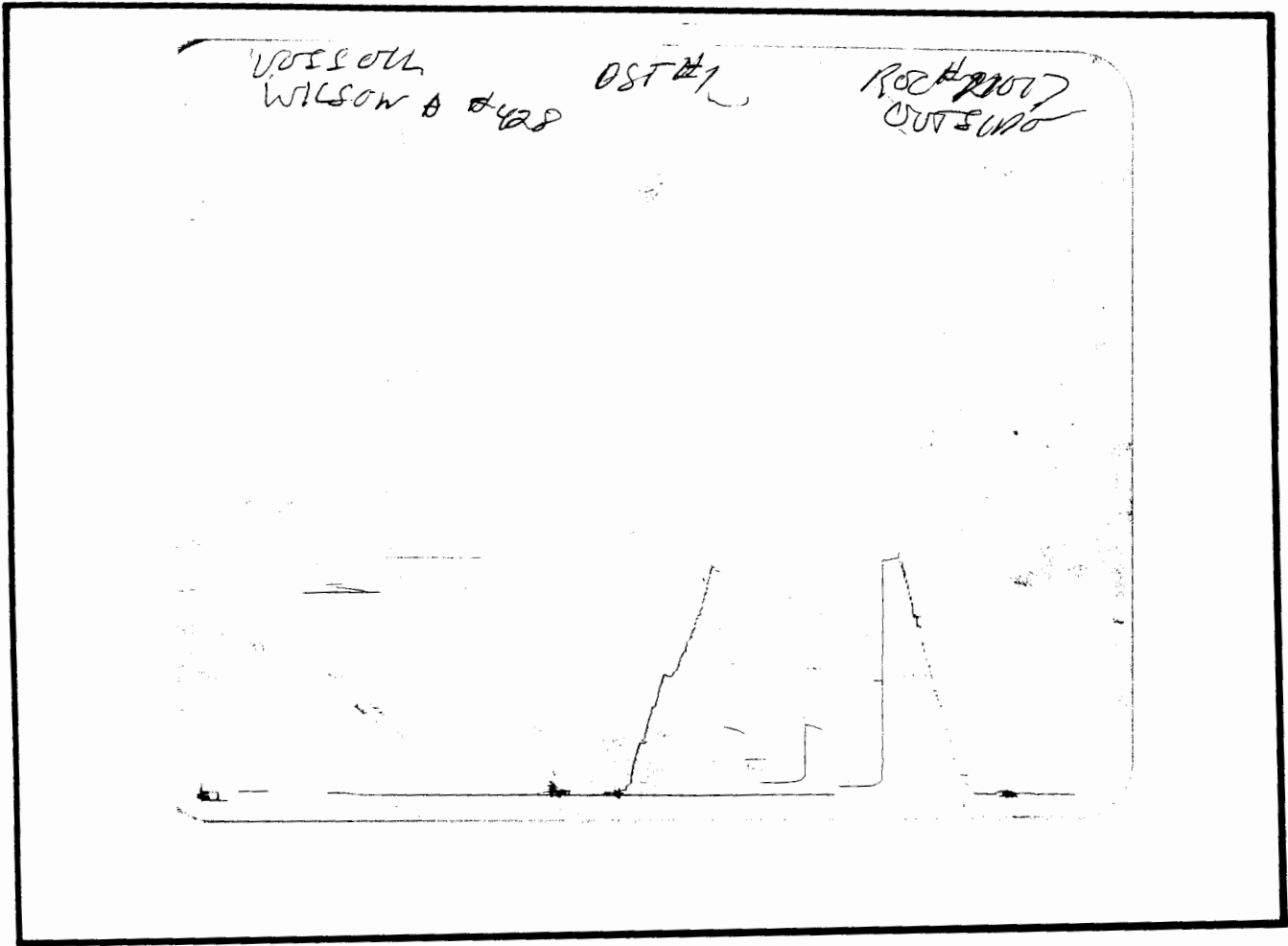
# WILSON "A" # 428



2006/10/13

21108 Time

21108 Pressure : ps(a)



This is an actual photograph of recorder chart.

POINT	PRESSURE Elec.		
	Field Reading	Office Reading	
(A) Initial Hydrostatic Mud .....	1191	1191	PSI
(B) First Initial Flow Pressure.....	34	34	PSI
(C) First Final Flow Pressure .....	43	43	PSI
(D) Initial Closed-in Pressure .....	405	405	PSI
(E) Second Initial Flow Pressure .....	45	45	PSI
(F) Second Final Flow Pressure.....	54	54	PSI
(G) Final Closed-in Pressure.....	397	397	PSI
(H) Final Hydrostatic Mud .....	1175	1175	PSI



# DIAMOND TESTING

P.O. Box 157  
HOISINGTON, KANSAS 67544  
(620) 653-7550 • (800) 542-7313  
STC 21108.D355

Company Vess Oil Corporation Lease & Well No. Wilson "A" No. 428  
Elevation 1390KB Formation Arbuckle Effective Pay -- Ft. Ticket No. J1958  
Date 10-14-06 Sec. 8 Twp. 25S Range 5E County Butler State Kansas  
Test Approved By Kim Shoemaker Diamond Representative John C. Riedl

Formation Test No. 2 Interval Tested from 2,462 ft. to 2,473 ft. Total Depth 2,473 ft.  
Packer Depth 2,457 ft. Size 6 3/4 in. Packer Depth -- ft. Size -- in.  
Packer Depth 2,462 ft. Size 6 3/4 in. Packer Depth -- ft. Size -- in.  
Depth of Selective Zone Set          ft.

Top Recorder Depth (Inside) 2,465 ft. Recorder Number 21108 Cap. 5,000 psi  
Bottom Recorder Depth (Outside) 2,470 ft. Recorder Number 11017 Cap. 4,000 psi  
Below Straddle Recorder Depth          ft. Recorder Number          Cap.          psi

Drilling Contractor C & G Drilling Company - Rig 1 Drill Collar Length 185 ft. I.D. 2 1/4 in.  
Mud Type Chemical Viscosity 43 Weight Pipe Length -- ft. I.D. -- in.  
Weight 9.2 Water Loss 9.5 cc. Drill Pipe Length 2,257 ft. I.D. 2 3/4 in.  
Chlorides 1,400 P.P.M. Test Tool Length 20 ft. Tool Size 3 1/2 - IF in.  
Jars: Make Bowen Serial Number Not Run Anchor Length 11 ft. Size 4 1/2 - FH in.  
Did Well Flow? No Reversed Out No Surface Choke Size 1 in. Bottom Choke Size 5/8 in.  
Main Hole Size 7 7/8 in. Tool Joint Size 4 - FH in.

Blow: 1st Open: Weak, 3 in., blow. No blow back during shut-in.  
2nd Open: Weak, 3 in., blow. no blow back during shut-in.

Recovered 172 ft. of clean gassy oil = 1.036640 bbls. (Grind out: 10%-gas; 90%-oil) Gravity: 38 @ 60°  
Recovered 62 ft. of water cut muddy oil = .305040 bbls. (Grind out: 10%-water; 40%-mud; 50%-oil)  
Recovered 31 ft. of very slightly oil cut muddy water = .152520 bbls. (Grind out: 3%-oil; 35%-mud; 62%-water)  
Recovered 265 ft. of TOTAL FLUID = 1.494200 bbls. Chlorides: 16,000 Ppm

Recovered          ft. of           
Remarks Resistivity: 45 @ 60°

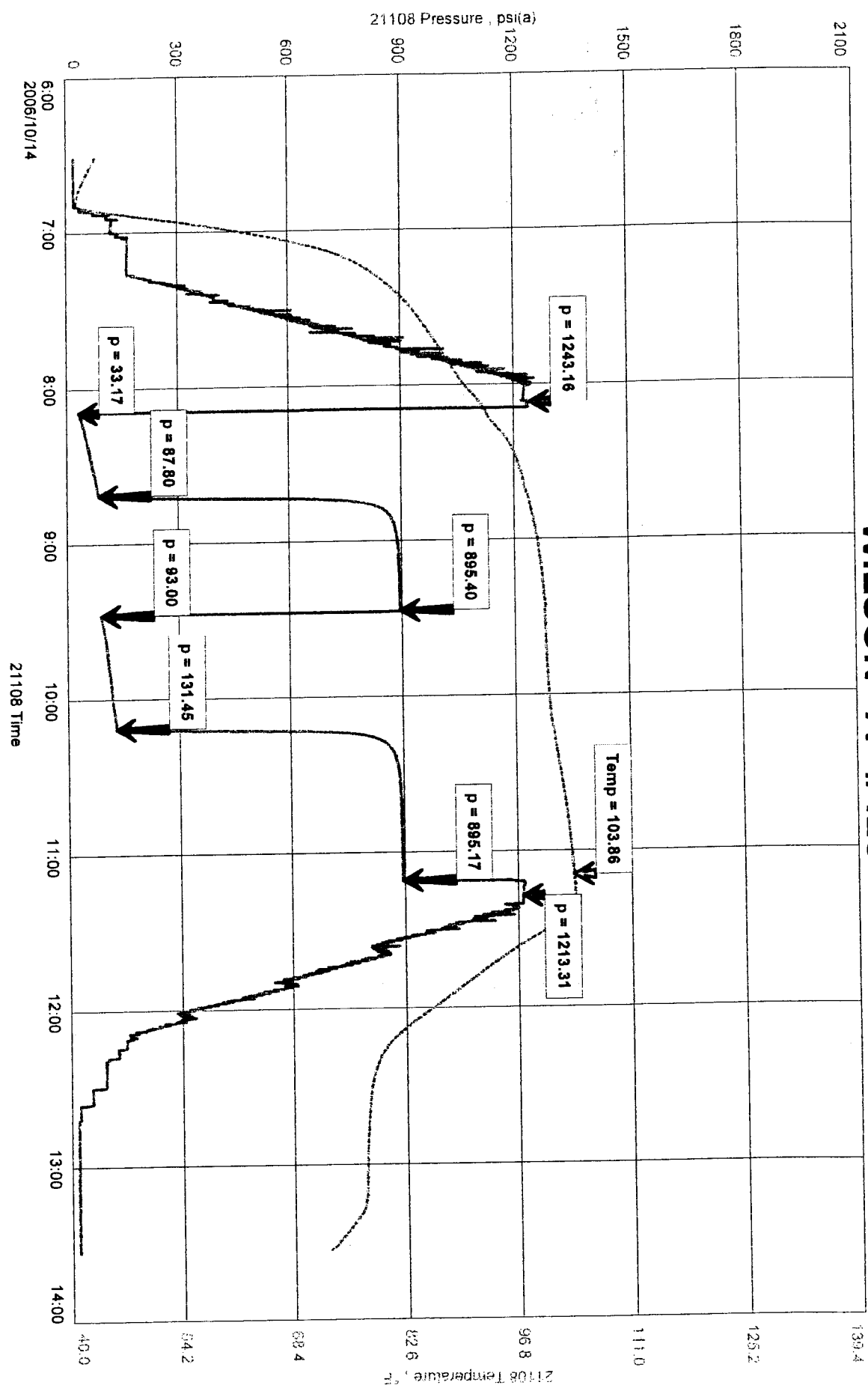
Time Set Packer(s) 8:08 ~~P.M.~~ <sup>A.M.</sup> Time Started Off Bottom 11:08 ~~P.M.~~ <sup>A.M.</sup> Maximum Temperature 104°  
Initial Hydrostatic Pressure ..... (A) 1243 P.S.I.  
Initial Flow Period ..... Minutes 30 (B) 33 P.S.I. to (C) 88 P.S.I.  
Initial Closed In Period ..... Minutes 45 (D) 895 P.S.I.  
Final Flow Period ..... Minutes 45 (E) 93 P.S.I. to (F) 131 P.S.I.  
Final Closed In Period ..... Minutes 60 (G) 895 P.S.I.  
Final Hydrostatic Pressure ..... (H) 1213 P.S.I.



VESS OIL CORP  
 DST #2 2462 TO 2473  
 Start Test Date: 2006/10/14  
 Final Test Date: 2006/10/14

# WILSON "A" #428

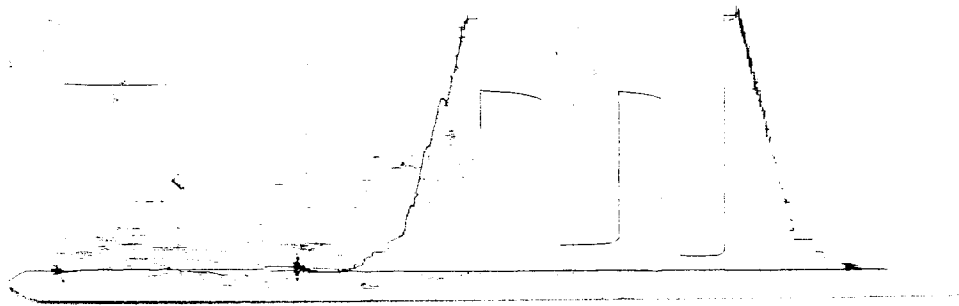
WILSON "A" #428  
 Formation: ARBUCKLE  
 Job Number: D355



V855 OIL  
WILSON A #428

DST #2

ROC #11017  
0055100



This is an actual photograph of recorder chart.

POINT	PRESSURE		Elec. Office Reading	PSI
	Field Reading			
(A) Initial Hydrostatic Mud .....	1243	1243		PSI
(B) First Initial Flow Pressure.....	33	33		PSI
(C) First Final Flow Pressure .....	88	88		PSI
(D) Initial Closed-in Pressure .....	895	895		PSI
(E) Second Initial Flow Pressure.....	93	93		PSI
(F) Second Final Flow Pressure.....	131	131		PSI
(G) Final Closed-in Pressure .....	895	895		PSI
(H) Final Hydrostatic Mud.....	1213	1213		PSI