



WESTERN TESTING CO., INC.

FORMATION TESTING

TICKET No 7756

P. O. BOX 1599 PHONE (316) 262-5861
WICHITA, KANSAS 67201

Elevation 1360 KB Formation Arbuckle Eff. Pay _____ Ft.

District Augusta Date 11-10-80 Customer Order No. _____

COMPANY NAME Maurice Perkins Oil Enterprises

ADDRESS Box 725 Howard, Ks. 67349

LEASE AND WELL NO. Hill #18 COUNTY Butler STATE Ks. Sec. 34 Twp. 25S Rge. 5E

Mail Invoice To Same No. Copies Requested 1

Co. Name _____ Address _____ No. Copies Requested 5

Mail Charts To Same Address _____ No. Copies Requested _____

Formation Test No. 1 Interval Tested from 2304 ft. to 2390 ft. Total Depth 2390 ft.

Packer Depth 2304 ft. Size 6 3/4 in. Packer Depth _____ ft. Size _____ in.

Packer Depth _____ ft. Size _____ in. Packer Depth _____ ft. Size _____ in.

Depth of Selective Zone Set _____

Top Recorder Depth (Inside) 2383 ft. Recorder Number 1559 Cap. 4200

Bottom Recorder Depth (Outside) 2380 ft. Recorder Number 5066 Cap. 3950

Below Straddle Recorder Depth _____ ft. Recorder Number _____ Cap. _____

Drilling Contractor Triangle #1 Drill Collar Length 400 I. D. 2 1/4 in.

Mud Type Chemical Viscosity 38 Weight Pipe Length _____ I. D. _____ in.

Weight 9.7 Water Loss 11.2 cc. Drill Pipe Length 1946 I. D. 3.8 1/2 in.

Chlorides 1700 P.P.M. Test Tool Length 44 ft. Tool Size 5 1/2 in.

Jars: Make _____ Serial Number _____ Anchor Length 24 ft. Size 5 1/2 in.

Did Well Flow? NO Reversed Out NO Surface Choke Size 3/4 in. Bottom Choke Size 3/4 in.

Main Hole Size 7 1/8 in. Tool Joint Size 4 1/2 X 4 in.

Blow: Very weak about 7 min.

Recovered 2 ft. of oil cut mud 40 Gavity

Recovered _____ ft. of free oil in top of tool

Recovered _____ ft. of _____

Recovered _____ ft. of _____

Recovered _____ ft. of _____

Remarks: _____

Time On Location 11:30 A.M. Time Pick Up Tool 3:00 P.M. Time Off Location 9:15 P.M.

Time Set Packer(s) 4:45 P.M. Time Started Off Bottom 6:45 P.M. Maximum Temperature 95°

Initial Hydrostatic Pressure (A) 1190 P.S.I.

Initial Flow Period Minutes 30 (B) 20 P.S.I. to (C) 20 P.S.I.

Initial Closed In Period Minutes 30 (D) 240 P.S.I.

Final Flow Period Minutes 30 (E) 30 P.S.I. to (F) 30 P.S.I.

Final Closed In Period Minutes 30 (G) 335 P.S.I.

Final Hydrostatic Pressure (H) 1180 P.S.I.

COMPANY TERMS

Western Testing Co., Inc. shall not be liable for damages of any kind to the property or personnel of the one for whom a test is made or for any loss suffered or sustained directly or indirectly through the use of its equipment, of its statements or opinion concerning the results of any test. Tools lost or damaged in the hole shall be paid at cost by the party for whom the test is made.

All charges subject to 12% interest after 60 days from date of invoice. Any expense incurred for collection will be added to the original amount.

Test Approved By [Signature]
Signature of Customer or his authorized representative

Western Representative Wynne W. [Signature]

FIELD INVOICE

Open Hole Test \$ 550.00

Misrun \$ _____

Straddle Test \$ _____

Jars \$ _____

Selective Zone \$ _____

Safety Joint \$ _____

Standby \$ _____

Evaluation \$ _____

Extra Packer \$ _____

Circ. Sub. \$ _____

15 Mileage \$ 1125

Fluid Sampler \$ _____

Extra Charts \$ _____

Insurance \$ 40.00

TOTAL \$ 601.25

WESTERN TESTING CO., INC.
Pressure Data

Date 11-10 Test Ticket No. 7756
 Recorder No. 1559 Capacity 4200 Location 2383 Ft.
 Clock No. _____ Elevation 1360 KB Well Temperature 95 °F

Point	Pressure		Time Given	Time Computed
A Initial Hydrostatic Mud	<u>1188</u>	P.S.I.	<u>4:45 P</u>	<u>M</u>
B First Initial Flow Pressure	<u>42</u>	P.S.I.	<u>30</u> Mins.	<u>30</u> Mins.
C First Final Flow Pressure	<u>23</u>	P.S.I.	<u>30</u> Mins.	<u>27</u> Mins.
D Initial Closed-in Pressure	<u>240</u>	P.S.I.	<u>30</u> Mins.	<u>30</u> Mins.
E Second Initial Flow Pressure	<u>48</u>	P.S.I.	<u>30</u> Mins.	<u>30</u> Mins.
F Second Final Flow Pressure	<u>24</u>	P.S.I.		
G Final Closed-in Pressure	<u>339</u>	P.S.I.		
H Final Hydrostatic Mud	<u>1188</u>	P.S.I.		

PRESSURE BREAKDOWN

First Flow Pressure
 Breakdown: 6 Inc.
 of 5 mins. and a
 final inc. of 0 Min.

Initial Shut-In
 Breakdown: 9 Inc.
 of 3 mins. and a
 final inc. of 0 Min.

Second Flow Pressure
 Breakdown: 6 Inc.
 of 5 mins. and a
 final inc. of 0 Min.

Final Shut-In
 Breakdown: 10 Inc.
 of 3 mins. and a
 final inc. of 0 Min.

Point Mins.	Press.	Point Minutes	Press.	Point Minutes	Press.	Point Minutes	Press.
P 1	<u>0</u>	<u>0</u>	<u>23</u>	<u>0</u>	<u>48</u>	<u>0</u>	<u>24</u>
P 2	<u>5</u>	<u>3</u>	<u>23</u>	<u>3</u>	<u>33</u>	<u>3</u>	<u>24</u>
P 3	<u>10</u>	<u>6</u>	<u>23</u>	<u>6</u>	<u>27</u>	<u>6</u>	<u>24</u>
P 4	<u>15</u>	<u>9</u>	<u>23</u>	<u>9</u>	<u>25</u>	<u>9</u>	<u>25</u>
P 5	<u>20</u>	<u>12</u>	<u>24</u>	<u>12</u>	<u>24</u>	<u>12</u>	<u>31</u>
P 6	<u>25</u>	<u>15</u>	<u>27</u>	<u>15</u>	<u>24</u>	<u>15</u>	<u>42</u>
P 7	<u>30</u>	<u>18</u>	<u>42</u>	<u>18</u>	<u>24</u>	<u>18</u>	<u>63</u>
P 8	<u>35</u>	<u>21</u>	<u>79</u>	<u>21</u>		<u>21</u>	<u>111</u>
P 9	<u>40</u>	<u>24</u>	<u>150</u>	<u>24</u>		<u>24</u>	<u>182</u>
P10	<u>45</u>	<u>27</u>	<u>240</u>	<u>27</u>		<u>27</u>	<u>255</u>
P11	<u>50</u>	<u>30</u>		<u>30</u>		<u>30</u>	<u>339</u>
P12	<u>55</u>	<u>33</u>		<u>33</u>		<u>33</u>	
P13	<u>60</u>	<u>36</u>		<u>36</u>		<u>36</u>	
P14		<u>39</u>		<u>39</u>		<u>39</u>	
P15		<u>42</u>		<u>42</u>		<u>42</u>	
P16		<u>45</u>		<u>45</u>		<u>45</u>	
P17		<u>48</u>		<u>48</u>		<u>48</u>	
P18		<u>51</u>		<u>51</u>		<u>51</u>	
P19		<u>54</u>		<u>54</u>		<u>54</u>	
P20		<u>57</u>		<u>57</u>		<u>57</u>	
		<u>60</u>		<u>60</u>		<u>60</u>	

Company Perkins Oil Enterprises Lease & Well No. Hill #18
 Elevation 1360 Kelly Bushing Arbuckle Effective Pay - Ft. Ticket No. 7756
 Date 11/10/80 Sec. 34 Twp. 25S Range 5E County Butler State Kansas
 Test Approved by Bill Johnson Western Representative Wynn Weir

Formation Test No. 1 Interval Tested from 2364 ft. to 2390 ft. Total Depth 2390 ft.
 Packer Depth 2364 ft. Size 6 3/4 in. Packer Depth - ft. Size - in.
 Packer Depth - ft. Size - in. Packer Depth - ft. Size - in.
 Depth of Selective Zone Set -

Top Recorder Depth (Inside) 2383 ft. Recorder Number 1559 Cap 4200
 Bottom Recorder Depth (Outside) 2386 ft. Recorder Number 5666 Cap 3950
 Below Straddle Recorder Depth - ft. Recorder Number - Cap -

Drilling Contractor Triangle Drilling Rig #1 Drill Collar Length 400 I. D. 2 1/4 in.
 Mud Type chemical Viscosity 38 Weight Pipe Length - I. D. - in.
 Weight 9.7 Water Loss 11.2 cc. Drill Pipe Length 1946 I. D. 3.8 in.
 Chlorides 1,700 P.P.M. Test Tool Length 44 ft. Tool Size 5 1/2 in.
 Jars: Make - Serial Number - Anchor Length 26 ft. Size 5 1/2 in.
 Did Well Flow? No Reversed Out No Surface Choke Size 3/4 in. Bottom Choke Size 3/4 in.
 Main Hole Size 7 7/8 in. Tool Joint Size 4 1/2 XH in.

Blow: Very weak blow seven minutes.

Recovered 2 ft. of oil cut mud 40 gravity
 Recovered - ft. of free oil in top of tool
 Recovered - ft. of -
 Recovered - ft. of -
 Recovered - ft. of -

Remarks: -

Time Set Packer(s) 4:45 ~~AM~~ P.M. Time Started Off Bottom 6:45 ~~AM~~ P.M. Maximum Temperature 95°
 Initial Hydrostatic Pressure (A) 1188 P.S.I.
 Initial Flow Period Minutes 30 (B) 42 P.S.I. to (C) 32 P.S.I.
 Initial Closed In Period Minutes 27 (D) 240 P.S.I.
 Final Flow Period Minutes 30 (E) 48 P.S.I. to (F) 24 P.S.I.
 Final Closed In Period Minutes 30 (G) 339 P.S.I.
 Final Hydrostatic Pressure (H) 1188 P.S.I.

WESTERN TESTING CO., INC.

Pressure Data

11/10 /80

7756

Date _____

Test Ticket No. _____

Recorder No. 1559

Capacity 4200

Location 2383 Ft.

Clock No. _____ Elevation 1360 Kelly Bushing

Well Temperature 95 °F

Point	Pressure		Time Given	Time Computed
A Initial Hydrostatic Mud	1188	P.S.I.	4:45P	
B First Initial Flow Pressure	42	P.S.I.	30	30
C First Final Flow Pressure	23	P.S.I.	30	27
D Initial Closed-in Pressure	240	P.S.I.	30	30
E Second Initial Flow Pressure	48	P.S.I.	30	30
F Second Final Flow Pressure	24	P.S.I.		
G Final Closed-in Pressure	339	P.S.I.		
H Final Hydrostatic Mud	1188	P.S.I.		

PRESSURE BREAKDOWN

First Flow Pressure
Breakdown: 6 Inc.
of 5 mins. and a
final inc. of 0 Min.

Initial Shut-In
Breakdown: 9 Inc.
of 3 mins. and a
final inc. of 0 Min.

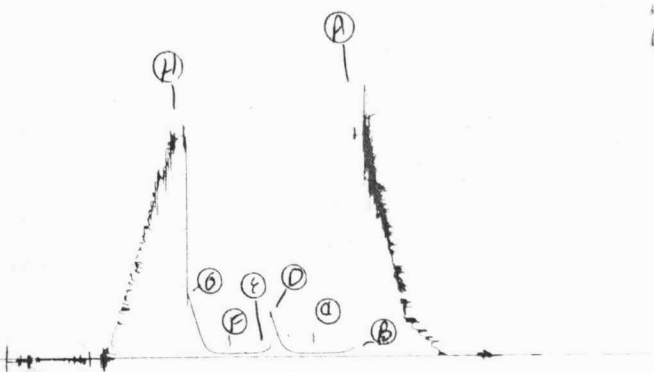
Second Flow Pressure
Breakdown: 6 Inc.
of 5 mins. and a
final inc. of 0 Min.

Final Shut-In
Breakdown: 10 Inc.
of 3 mins. and a
final inc. of 0 Min.

Point Mins.	Press.	Point Minutes	Press.	Point Minutes	Press.	Point Minutes	Press.
P 1 0	42	0	23	0	48	0	24
P 2 5	31	3	23	5	33	3	24
P 3 10	27	6	23	10	27	6	24
P 4 15	23	9	23	15	25	9	25
P 5 20	23	12	24	20	24	12	31
P 6 25	23	15	27	25	24	15	42
P 7 30	23	18	42	30	24	18	63
P 8		21	79			21	111
P 9		24	150			24	182
P10		27	240			27	255
P11						30	339
P12							
P13							
P14							
P15							
P16							
P17							
P18							
P19							
P20							

JK # 7756

I



155A



WESTERN TESTING CO., INC.

FORMATION TESTING

TICKET NO

7757

Kelly Bushing

P. O. BOX 1599 PHONE (316) 262-5861 WICHITA, KANSAS 67201

Elevation 1360 KB Formation Arbuckle Eff. Pay Ft.

District Augusty Date 11-11-80 Customer Order No.

COMPANY NAME Maurice Perkins Oil Enterprises

ADDRESS Box 725 Howard, Ks. 67349

LEASE AND WELL NO. Hill #18 COUNTY Butler STATE Ks. Sec. 34 Twp 25S Rge 5E

Mail Invoice To Same Co. Name Address No. Copies Requested 1

Mail Charts To Same Address No. Copies Requested 5

Formation Test No. 2 Interval Tested from 2422 ft. to 2441 ft. Total Depth 2441 ft.

Packer Depth 2422 ft. Size 4 3/4 in. Packer Depth - ft. Size - in.

Packer Depth - ft. Size - in. Packer Depth - ft. Size - in.

Depth of Selective Zone Set

Top Recorder Depth (Inside) 2434 ft. Recorder Number 1559 Cap. 4200

Bottom Recorder Depth (Outside) 2437 ft. Recorder Number 54664 Cap. 3950

Below Straddle Recorder Depth - ft. Recorder Number - Cap. -

Drilling Contractor Triangle Drilling #1 Drill Collar Length 400 I. D. 2 1/2 in.

Mud Type Chemical Viscosity 38 Weight Pipe Length - I. D. - in.

Weight 9.7 Water Loss 11.2 cc. Drill Pipe Length 2003 I. D. 3.8 in.

Chlorides 1700 P.P.M. Test Tool Length 38 ft. Tool Size 5 1/2 in.

Jars: Make - Serial Number - Anchor Length 20 ft. Size 5 1/2 in.

Did Well Flow? NO Reversed Out yes Surface Choke Size 3/4 in. Bottom Choke Size 3/4 in.

Main Hole Size 7 7/8 in. Tool Joint Size 4 1/2 x 4 in.

Blow: Strong throughout Test

Recovered 1890 ft. of slight oil & gas cut muddy salt water

Recovered ft. of 21,000 PPM Chlorides

Recovered ft. of .5 Resistivity @ 68°F

Recovered ft. of

Recovered ft. of

Remarks:

Time On Location 5:00 A.M. Time Pick Up Tool 7:00 P.M. Time Off Location 3:45 A.M. P.M.

Time Set Packer(s) 9:15 A.M. P.M. Time Started Off Bottom 11:45 A.M. P.M. Maximum Temperature 99

Initial Hydrostatic Pressure (A) 1231 P.S.I.

Initial Flow Period Minutes 30 (B) 115 P.S.I. to (C) 555 P.S.I.

Initial Closed In Period Minutes 30 (D) 855 P.S.I.

Final Flow Period Minutes 45 (E) 425 P.S.I. to (F) 815 P.S.I.

Final Closed In Period Minutes 45 (G) 865 P.S.I.

Final Hydrostatic Pressure (H) 1221 P.S.I.

COMPANY TERMS

Western Testing Co., Inc. shall not be liable for damages of any kind to the property or personnel of the one for whom a test is made or for any loss suffered or sustained directly or indirectly through the use of its equipment, of its statements or opinion concerning the results of any test. Tools lost or damaged in the hole shall be paid at cost by the party for whom the test is made.

All charges subject to 12% interest after 60 days from date of invoice. Any expense incurred for collection will be added to the original amount.

Test Approved By [Signature] Signature of Customer or his authorized representative

Western Representative [Signature]

FIELD INVOICE

Table with 2 columns: Item, Amount. Includes Open Hole Test (\$550.00), Misc. (\$), Straddle Test (\$), Jars (\$), Selective Zone (\$), Safety Joint (\$), Standby (\$), Evaluation (\$), Extra Packer (\$), Circ. Sub. (\$30.00), 15 Mileage (\$11.25), Fluid Sampler (\$), Extra Charts (\$), Insurance (\$), TOTAL (\$591.25)

WESTERN TESTING CO., INC.
Pressure Data

Date 11-11 Test Ticket No. 7757
 Recorder No. 1559 Capacity 4200 Location 2434 Ft.
 Clock No. _____ Elevation 1360 KB Well Temperature 99 °F

Point	Pressure		Time Given	Time Computed
A Initial Hydrostatic Mud	<u>1232</u>	P.S.I.	<u>9:15 A</u>	<u>M</u>
B First Initial Flow Pressure	<u>113</u>	P.S.I.	<u>30</u> Mins.	<u>30</u> Mins.
C First Final Flow Pressure	<u>564</u>	P.S.I.	<u>30</u> Mins.	<u>30</u> Mins.
D Initial Closed-in Pressure	<u>856</u>	P.S.I.	<u>45</u> Mins.	<u>45</u> Mins.
E Second Initial Flow Pressure	<u>631</u>	P.S.I.	<u>45</u> Mins.	<u>48</u> Mins.
F Second Final Flow Pressure	<u>824</u>	P.S.I.		
G Final Closed-in Pressure	<u>870</u>	P.S.I.		
H Final Hydrostatic Mud	<u>1217</u>	P.S.I.		

PRESSURE BREAKDOWN

First Flow Pressure
 Breakdown: 6 Inc.
 of 5 mins. and a
 final inc. of 0 Min.

Initial Shut-In
 Breakdown: 10 Inc.
 of 3 mins. and a
 final inc. of 0 Min.

Second Flow Pressure
 Breakdown: 9 Inc.
 of 5 mins. and a
 final inc. of 0 Min.

Final Shut-In
 Breakdown: 16 Inc.
 of 3 mins. and a
 final inc. of 0 Min.

Point Mins.	Press.	Point Minutes	Press.	Point Minutes	Press.	Point Minutes	Press.
P 1	<u>0</u>	<u>0</u>	<u>564</u>	<u>0</u>	<u>631</u>	<u>0</u>	<u>824</u>
P 2	<u>5</u>	<u>3</u>	<u>793</u>	<u>5</u>	<u>641</u>	<u>3</u>	<u>843</u>
P 3	<u>10</u>	<u>6</u>	<u>814</u>	<u>10</u>	<u>675</u>	<u>6</u>	<u>850</u>
P 4	<u>15</u>	<u>9</u>	<u>831</u>	<u>15</u>	<u>710</u>	<u>9</u>	<u>856</u>
P 5	<u>20</u>	<u>12</u>	<u>839</u>	<u>20</u>	<u>741</u>	<u>12</u>	<u>859</u>
P 6	<u>25</u>	<u>15</u>	<u>843</u>	<u>25</u>	<u>764</u>	<u>15</u>	<u>861</u>
P 7	<u>30</u>	<u>18</u>	<u>847</u>	<u>30</u>	<u>787</u>	<u>18</u>	<u>862</u>
P 8	<u>35</u>	<u>21</u>	<u>851</u>	<u>35</u>	<u>804</u>	<u>21</u>	<u>863</u>
P 9	<u>40</u>	<u>24</u>	<u>853</u>	<u>40</u>	<u>818</u>	<u>24</u>	<u>864</u>
P10	<u>45</u>	<u>27</u>	<u>854</u>	<u>45</u>	<u>824</u>	<u>27</u>	<u>865</u>
P11	<u>50</u>	<u>30</u>	<u>856</u>	<u>50</u>		<u>30</u>	<u>866</u>
P12	<u>55</u>	<u>33</u>		<u>55</u>		<u>33</u>	<u>866</u>
P13	<u>60</u>	<u>36</u>		<u>60</u>		<u>36</u>	<u>867</u>
P14		<u>39</u>		<u>65</u>		<u>39</u>	<u>868</u>
P15		<u>42</u>		<u>70</u>		<u>42</u>	<u>869</u>
P16		<u>45</u>		<u>75</u>		<u>45</u>	<u>870</u>
P17		<u>48</u>		<u>80</u>		<u>48</u>	<u>870</u>
P18		<u>51</u>		<u>85</u>		<u>51</u>	
P19		<u>54</u>		<u>90</u>		<u>54</u>	
P20		<u>57</u>				<u>57</u>	
		<u>60</u>				<u>60</u>	

Company Perkins Oil Enterprises Lease & Well No. Hill #18
 Elevation 1360 Kelly Bushing Formation Arbuckle Effective Pay - Ft. Ticket No. 7757
 Date 11/11/80 Sec. 34 Twp. 25S Range 5E County Butler State Kansas
 Test Approved by Bill Johnson Western Representative Wynn Weir

Formation Test No. 2 Interval Tested from 2422 ft. to 2441 ft. Total Depth 2441 ft.
 Packer Depth 2422 ft. Size 6 3/4 in. Packer Depth - ft. Size - in.
 Packer Depth - ft. Size - in. Packer Depth - ft. Size - in.
 Depth of Selective Zone Set -

Top Recorder Depth (Inside) 2434 ft. Recorder Number 1559 Cap. 4200
 Bottom Recorder Depth (Outside) 2437 ft. Recorder Number 5666 Cap. 3950
 Below Straddle Recorder Depth - ft. Recorder Number - Cap. -

Drilling Contractor Triangle Drlg. Rig #1 Drill Collar Length 400 I. D. 2 1/4 in.
 Mud Type chemical Viscosity 38 Weight Pipe Length - I. D. - in.
 Weight 9.7 Water Loss 11.2 cc. Drill Pipe Length 2003 I. D. 3.8 in.
 Chlorides 1,700 P.P.M. Test Tool Length 38 ft. Tool Size 5 1/2 in.
 Jars: Make - Serial Number - Anchor Length 20 ft. Size 5 1/2 in.
 Did Well Flow? No Reversed Out Yes Surface Choke Size 3/4 in. Bottom Choke Size 3/4 in.
 Main Hole Size 7 7/8 in. Tool Joint Size 4 1/2 XH in.

Blow: Strong blow throughout test.

Recovered 1890 ft. of slight oil and gas cut muddy salt water
 Recovered - ft. of 21,000 ppm chlorides
 Recovered - ft. of .5 resisitivity @ 68°F
 Recovered - ft. of -
 Recovered - ft. of -

Remarks: -

Time Set Packer(s) 9:15 ~~P.M.~~ A.M. Time Started Off Bottom 11:45 ~~P.M.~~ A.M. Maximum Temperature 99°
 Initial Hydrostatic Pressure (A) 1232 P.S.I.
 Initial Flow Period Minutes 30 (B) 113 P.S.I. to (C) 564 P.S.I.
 Initial Closed In Period Minutes 30 (D) 856 P.S.I.
 Final Flow Period Minutes 45 (E) 631 P.S.I. to (F) 824 P.S.I.
 Final Closed In Period Minutes 48 (G) 870 P.S.I.
 Final Hydrostatic Pressure (H) 1217 P.S.I.

WESTERN TESTING CO., INC.
Pressure Data

11/11/80

7757

Date _____ Recorder No. 1559 Capacity 4200 Test Ticket No. _____ Location 2434 Ft.

Clock No. --- Elevation 1360 Kelly Bushing Well Temperature 99 °F

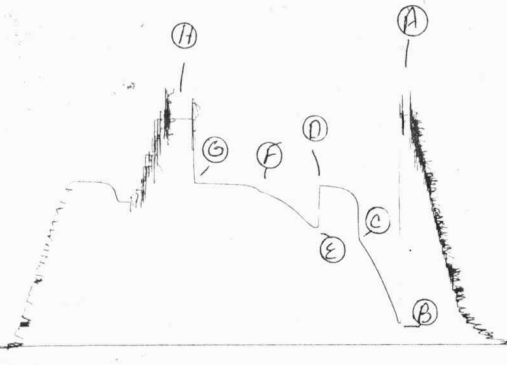
Point	Pressure		Time Given	Time Computed
A Initial Hydrostatic Mud	1232	P.S.I.	9:15A	M
B First Initial Flow Pressure	113	P.S.I.	30	Mins. 30 Mins.
C First Final Flow Pressure	564	P.S.I.	30	Mins. 30 Mins.
D Initial Closed-in Pressure	856	P.S.I.	45	Mins. 45 Mins.
E Second Initial Flow Pressure	631	P.S.I.	45	Mins. 48 Mins.
F Second Final Flow Pressure	824	P.S.I.		
G Final Closed-in Pressure	870	P.S.I.		
H Final Hydrostatic Mud	1217	P.S.I.		

PRESSURE BREAKDOWN

First Flow Pressure Breakdown: <u>6</u> Inc. of <u>5</u> mins. and a final inc. of <u>0</u> Min.		Initial Shut-In Breakdown: <u>10</u> Inc. of <u>3</u> mins. and a final inc. of <u>0</u> Min.		Second Flow Pressure Breakdown: <u>9</u> Inc. of <u>5</u> mins. and a final inc. of <u>0</u> Min.		Final Shut-In Breakdown: <u>16</u> Inc. of <u>3</u> mins. and a final inc. of <u>0</u> Min.		
Point Mins.	Press.	Point Minutes	Press.	Point Minutes	Press.	Point Minutes	Press.	
P 1	0	113	0	564	0	631	0	824
P 2	5	196	3	793	5	641	3	843
P 3	10	288	6	814	10	675	6	850
P 4	15	374	9	831	15	710	9	856
P 5	20	450	12	839	20	741	12	859
P 6	25	512	15	843	25	764	15	861
P 7	30	564	18	847	30	787	18	862
P 8			21	851	35	804	21	863
P 9			24	853	40	818	24	864
P10			27	854	45	824	27	865
P11			30	856			30	866
P12							33	866
P13							36	867
P14							39	868
P15							42	869
P16							45	870
P17							48	870
P18								
P19								
P20								

JK # 7757

I



1559