

Kansas Cores

PETROLEUM RESERVOIR ENGINEERING
WICHITA, KANSAS

COMPANY Beard, English & Martin DATE 5-7-67
 WELL Huffman #10 ANALYST IS
 FIELD _____
 COUNTY Greenwood STATE Kansas

The analyses and interpretations are based on material brought to Kansas Cores by the client, and such data and interpretations are accessible only to that company which the client represents. Kansas Cores makes no warranty and makes no guarantee for the interpretations and opinions of the data. Our opinions of an analysis are placed at the discretion of the operator.

PERMEABILITY MILLIDARCYS \circ — \circ

200 150 100 50 0

POROSITY—% X—X

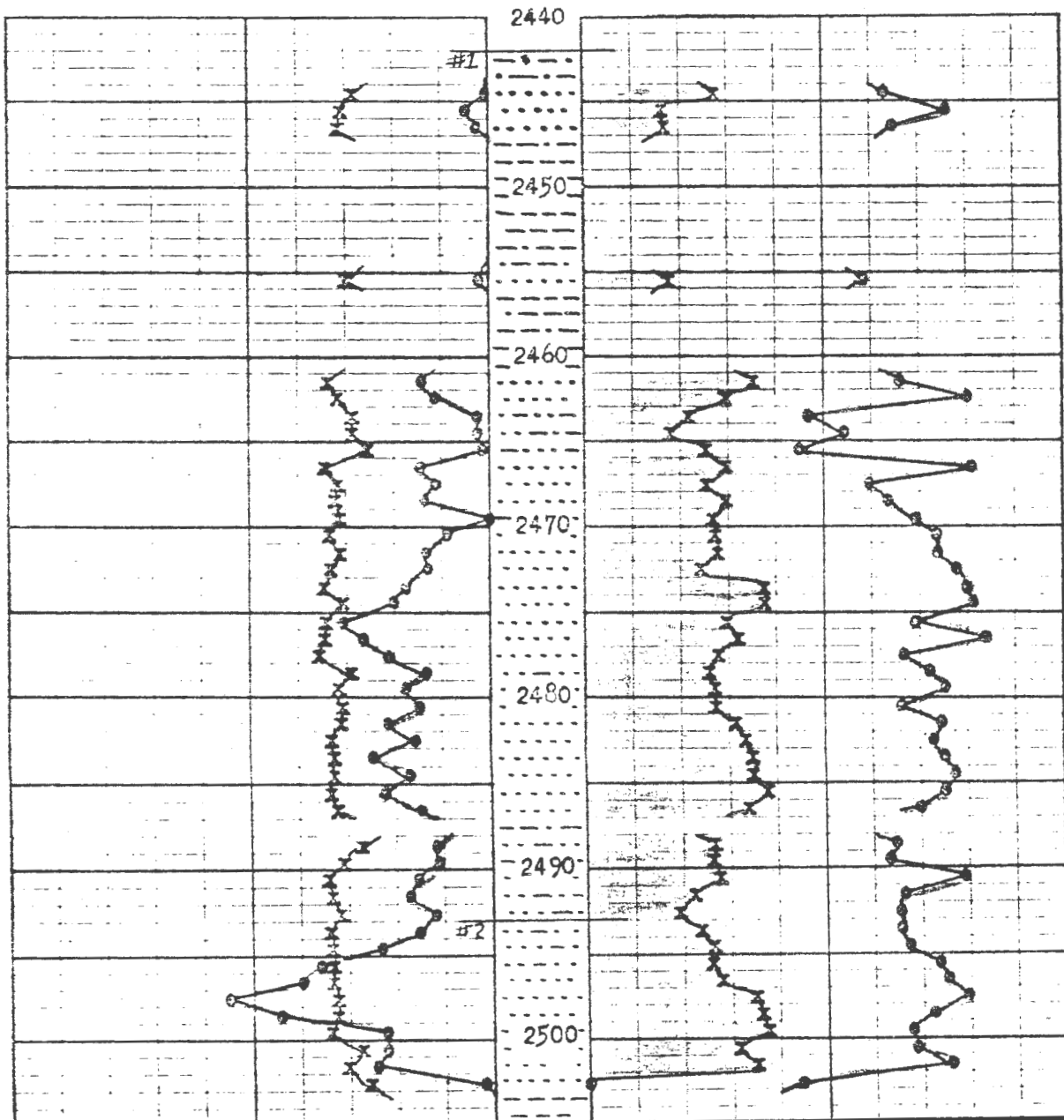
20 10 0

CONNATE WATER % SATURATION

0 70 60 50 40 \circ — \circ

OIL % PORE SATURATION X—X

10 20



Kansas Cores

PETROLEUM RESERVOIR ENGINEERING
WICHITA, KANSAS 67208

Hoffman #10 COUNTY Greenwood STATE Kansas
 COMPANY Board, English & Martin DATE 5-7-67 FILE NO. S-734
 FIELD _____ TYPE CORES Diamond ANALYST IS

ANALYSIS DATA AND INTERPRETATIONS

SAMPLE No.	DEPTH	PERMEABILITY MILLIDARCYs		POROSITY %	SATURATION WATER % PORE SPACE	SATURATION OIL % PORE SPACE	PROBABLE PRODUCTION	REMARKS
		HORIZONTAL	VERTICAL					
1	2444 45	2.0	0.0	14.5	49.3	13.6	Oil	
2	2445 46	13.6	4.8	15.9	42.3	8.5	Oil	
3	2446 47	8.9	5.0	15.6	48.3	8.7	Oil	
4	2455 56	4.5	4.2	14.8	50.8	9.2	Oil	
5	2461 62	36.1	26.7	17.3	47.6	16.9	Oil	
6	2462 63	26.7	7.2	15.7	40.0	14.5	Oil	
7	2463 64	5.3	2.1	14.5	57.1	10.7	Oil	
8	2464 65	8.8	2.7	14.5	53.5	9.4	Oil	
9	2465 66	4.4	2.3	13.3	58.6	12.0	Oil	
10	2466 67	38.8	46.2	17.3	39.5	14.8	Oil	
11	2467 68	27.4	7.2	15.5	50.1	12.3	Oil	
12	2468 69	34.6	10.0	15.8	48.1	14.8	Oil	
13	2469 70	0.0	0.0	15.4	45.1	13.5	No Perm	
14	2470 71	24.3	18.9	16.8	43.1	13.9	Oil	
15	2471 72	33.7	18.0	15.9	43.3	13.6	Oil	
16	2472 73	34.5	24.6	16.2	41.3	11.8	Oil	
17	2473 74	46.1	41.3	16.8	40.0	18.2	Oil	
18	2474 75	50.6	46.9	15.2	39.5	18.8	Oil	
19	2475 76	77.9	61.8	16.5	45.7	14.8	Oil	
20	2476 77	70.5	62.1	17.5	38.4	15.9	Oil	
21	2477 78	55.5	48.7	17.6	46.5	14.1	Oil	
22	2478 79	33.0	18.6	14.5	44.2	13.8	Oil	
23	2479 80	47.2	21.3	15.8	42.7	13.2	Oil	

Kansas Cores

PETROLEUM RESERVOIR ENGINEERING
WICHITA, KANSAS 67208

_____ COUNTY _____ STATE _____

COMPANY _____ DATE _____ FILE No. _____

FIELD _____ TYPE CORES _____ ANALYST _____

ANALYSIS DATA AND INTERPRETATIONS

SAMPLE No.	DEPTH	PERMEABILITY MILLIDARCYs		POROSITY %	SATURATION WATER % PORE SPACE	SATURATION OIL % PORE SPACE	PROBABLE PRODUCTION	REMARKS
		HORIZONTAL	VERTICAL					
24	2480	41.1	34.6	15.7	47.4	13.4	Oil	
	81							
25	2481	54.1	33.4	15.8	43.0	15.8	Oil	
	82							
26	2482	39.6	38.0	16.5	44.1	16.1	Oil	
	83							
27	2483	63.0	49.6	16.2	43.2	17.5	Oil	
	84							
28	2484	45.6	51.2	16.4	42.3	16.9	Oil	
	85							
29	2485	56.0	44.7	16.8	42.7	19.0	Oil	
	86							
30	2486	36.7	14.8	15.9	45.2	16.1	Oil	
	87							
3	2488	28.5	16.2	14.1	47.7	13.2	Oil	
	89							
32	2489	25.9	10.1	15.1	48.3	12.9	Oil	
	90							
33	2490	41.3	13.6	16.3	40.6	13.8	Oil	
	91							
34	2491	46.2	20.7	16.6	46.5	11.6	Oil	
	92							
35	2492	28.0	21.5	15.4	47.3	9.9	Oil	
	93							
36	2493	38.7	27.3	16.6	47.3	11.6	Oil	
	94							
37	2494	58.1	22.0	16.1	46.9	13.7	Oil	
	95							
38	2495	84.8	48.2	16.8	43.8	13.4	Oil	
	96							
39	2496	100	69.3	17.3	42.7	14.1	Oil	
	97							
40	2497	140	110	16.9	40.3	17.7	Oil	
	98							
41	2498	110	84.8	15.9	44.2	17.6	Oil	
	99							
42	2499	54.6	39.2	16.4	46.5	18.5	Oil	
	2500							
	2500	55.2	39.7	14.1	45.9	15.2	Oil	
	01							
44	2501	60.5	26.8	15.1	42.3	16.6	Oil	
	02							
45	2502	4.7	2.8	13.0	58.7	0.0	Low Perm	
	03							

Kansas Cores

PETROLEUM RESERVOIR ENGINEERING
WICHITA, KANSAS

BEM
Hoffman #10
30-255-9E

DATA AVERAGES AND OIL RECOVERY FIGURES

DEPTH	2461'-2502'		
FEET OF PRODUCTION FORMATION OF SECTION ANALYZED	39		
AVERAGE PERMEABILITY IN MILLIDARCYS	47.4		
AVERAGE POROSITY, PER CENT	16.2		
AVERAGE TOTAL WATER % OF PORE SPACE	45.1		
AVERAGE RESIDUAL OIL % OF PORE SPACE	14.6		
AVERAGE CONNATE WATER CALCULATED % OF PORE SPACE	36.1		
FORMATION VOLUME FACTOR - USED IN CALCULATING RECOVERABLE OIL	1.16		
PRODUCTIVE CAPACITY - PRODUCTIVE FEET X AVERAGE PERMEABILITY IN MILLIDARCYS	1,859		
RECOVERABLE OIL BY WATER DRIVE - BBLG. PER ACRE FOOT	312 *		
RECOVERABLE OIL BY GAS EXPANSION - BBLG. PER ACRE FOOT	173 **		

* 45% of the oil in place

** 25% of the oil in place

Company	Boord, English & Martin
Farm	Hoffman
Well	110
Location	NW NW SW Sec 20-25-9 Greenwood County, Kansas
Date	Commenced: May 1, 1967 Completed: May 7, 1967
Casing Record	100' of 8", 2544' of 5 $\frac{1}{2}$ " casing
Elevation	1449 ground level
Contractor	Eureka Drilling Company Hamilton, Kansas Rig #2

32	lime	
110	lime & shale	
1115	shale w/lime strks	
1195	lime & shale	
1440	shale w/lime strks	
1509	sandy shale & lime strks	
1660	lime	
1825	shale w/lime	
1869	lime	
1895	shale & lime	
1980	lime	
2175	shale w/lime strks	
2429	shale & lime	
2485	Core #1	2429 to 2447 sand w/S.O.
		2447 to 2459 shale w/sand lamination
		2459 to 2485 sand w/good S.O.
2506	Core #2	2485 to 2502 $\frac{1}{2}$ sand w/good S.O.
		2502 $\frac{1}{2}$ to 2505 shale
		2505 to 2506 lime
2544	shale R.T.D.	