

REPORT

FOR

KEWANEE OIL COMPANY

---

ON

STRICKLAND WELL NO. 3

Copy Three Date 7-19-57

COMPANY **Kewanee Oil Company**

**EARLOUGHER ENGINEERING**

PETROLEUM CONSULTANTS - CORE ANALYSES

3316 EAST 21ST STREET  
TULSA, OKLAHOMA

July 19, 1957

Depth (feet)	Grain Size	Moisture (%)	Specific Gravity	Weight (lb)	Volume (cu ft)	Weight of Sand (lb)	Volume of Sand (cu ft)
1	3352.3	3.3	9.5	66	180	180	1.2
2	3353.2	-0-	6.3	24	75	100	0.6
3	3354.7	-0-	9.4	19	62	81	0.5
4	3355.1	-0-	6.6	29	71	100	0.7
5	3356.7	-0-	8.2	22	78	100	0.7
6	3358.4	-0-	7.6	29	71	100	0.7
7	3359.3	-0-	6.0	23	64	89	0.5
8	3360.3	-0-	11.2	14	46	58	0.4
9	3361.3	-0-	11.3	7.4	26	33	0.2
10	3362.3	-0-	13.5	+	40	40	0.3
11	3363.3	-0-	8.8	5.2	17	22	0.1
12	3364.3	-0-	14.9	3.5	11	14	0.1
13	3365.3	-0-	14.9	+	53	53	0.3
14	3373.1	0.5	17.3	+	62	62	0.4
15	3381.3	-0-	12.3	3.7	12	15	0.1
16	3383.0	2.6	20.9	1.9	70	70	0.4
17	3391.4	-0-	8.7	14	43	56	0.4
18	3394.5	67	10.3	15	46	60	0.4
19	3395.5	22	16.3	26	73	95	0.6
20	3396.5	10	17.4	12	31	40	0.3
21	3397.3	13	15.0	15	41	53	0.3
22	3398.3	13	15.0	15	41	53	0.3
23	3399.3	13	15.0	15	41	53	0.3
24	3400.3	0.1	19.2	3.3	10	13	0.1
25	3401.5	-0-	16.3	4.0	11	14	0.1
26	3412.4	8.1	17.9	10	27	35	0.2
27	3413.3	35	20.4	15	39	50	0.3
28	3414.3	9.4	16.3	20	57	77	0.5
29	3415.5	12	16.3	16	43	56	0.4
30	3416.5	4.3	18.4	10	27	35	0.2
31	3417.4	-0-	17.4	3.5	11	14	0.1

Kewanee Oil Company  
P. O. Box 2093  
Wichita 1, Kansas  
  
Attention - Mr. Paul G. Arnold

Re - Core Analysis  
Strickland Well No. 3  
Sec. 34, T.26-S., R.1-E.  
Sedgwick County, Kansas

Gentlemen:

Attached are results of analysis, together with profile and summary, covering core received from your above well.

Yours very truly

**EARLOUGHER ENGINEERING**

*R. C. Earlougher*

R. C. Earlougher, Engineer

SUMMARY (Enclosed following page)

JMR tw  
Encl 3  
cc - Kewanee Office - Tulsa (3)  
Attn: Vance K. Sharpe

**EARLOUGHER ENGINEERING**  
RESULTS OF CORE ANALYSES

COMPANY Kewanee Oil Company

WELL Strickland No. 3

Sample No.	Depth Feet	Perm. Md.	Porosity Per Cent	Per Cent Saturation			Avg. Oil Content Bbl./A. Ft.	Feet of Sand
				Oil	Water	Total		
1	3352.3	3.8	9.5	22	44	66	160	1.8
2	3353.2	-0-	6.8	24	76	100	120	0.6
3	3354.7	-0-	9.4	19	62	81	140	1.7
4	3356.1	-0-	6.6	29	71	100	150	1.3
5	3356.7	-0-	8.2	22	78	100	140	1.2
6	3358.4	-0-	7.6	29	71	100	170	1.1
7	3359.3	-0-	6.0	25	64	89	120	1.0
8	3360.3	-0-	11.2	8.3	46	54	72	0.8
9	3362.7	8.7	7.3	7.4	56	63	42	0.5
10	3366.5	11	13.5	+	40	40	+	3.0
11	3368.4	1.5	8.8	5.2	57	62	36	2.3
12	3370.4	18	14.3	3.5	57	61	39	1.6 vugs
13	3373.3	2.9	18.4	+	53	53	+	2.1
14	3375.1	0.5	17.8	+	62	62	+	1.6
15	3381.3	-0-	12.3	3.7	96	100	35	1.5
16	3383.0	2.6	20.9	3.0	70	73	49	1.7
17*	3393.6	-0-	4.7	51	43	94	190	0.9 vugs
18	3394.5	67	16.5	15	23	38	200	0.6
19	3395.3	22	9.3	26	23	49	180	0.6
20	3396.4	10	17.4	12	51	63	160	1.5
21	3397.3	13	15.0	15	57	72	170	1.0
22	3398.3	0.1	15.1	8.0	69	77	93	1.3
23	3399.5	1.1	18.4	3.0	58	61	43	0.5
24	3400.3	0.1	19.2	3.3	57	60	49	1.3
25	3401.5	-0-	16.3	4.6	53	58	58	0.9
26	3412.4	83	17.9	10	19	29	130	1.0
27	3413.3	35	20.4	15	33	48	240	0.9
28	3414.3	9.4	16.3	20	57	77	250	1.0 vugs
29	3415.5	12	16.3	16	33	48	200	1.1
30	3416.5	4.3	18.4	10	63	73	140	0.6
31*	3417.4	-0-	17.4	3.5	60	64	47	1.7

m

**SUMMARY** (Continued following page)

Sec.	Formation	Depth, Feet		Feet of Sand	Avg. Perm.	Avg. Por.	Avg. Oil Sat.	Avg. Water Sat.	Avg. Oil Content Bbl./A.Ft
		From	To						

**EARLOUGHER ENGINEERING**  
RESULTS OF CORE ANALYSES

COMPANY Kewanee Oil Company WELL Strickland No. 3

Sample No.	Depth Feet	Perm. Md.	Porosity Per Cent	Per Cent Saturation			Avg. Oil Content Bbl./A. Ft.	Feet of Sand
				Oil	Water	Total		
32	3418.7	4.7	21.3	15	48	63	250	0.5
33	3419.6	1.2	12.4	23	34	57	220	1.3
34	3420.6	-0-	10.7	17	83	100	140	0.8
35	3421.5	2.8	13.7	17	77	94	180	0.7
36	3422.5	-0-	7.6	27	73	100	160	0.7
37*	3423.4	-0-	14.2	4.5	57	62	49	2.1
38*	3427.2	-0-	11.1	5.2	70	75	44	1.5
39*	3428.2	-0-	9.0	+	100	100	+	1.3
40	3429.8	-0-	5.2	29	42	71	120	0.8
41	3430.7	-0-	8.7	14	57	71	92	1.0
42	3431.3	0.1	11.2	10	55	65	89	0.4
43	3432.4	-0-	12.0	3.8	60	64	35	0.9
44	3434.7	0.8	15.7	3.6	58	62	43	0.4
45	3435.3	1.4	5.5	39	59	98	170	0.8
46	3436.3	0.4	7.1	19	33	52	110	0.7
47	3437.5	0.6	15.9	2.8	90	93	34	1.5
48	3439.3	2.0	8.1	5.2	65	70	33	1.4

\*Not included in average.

Elevation 1321 feet C.M.

m

**SUMMARY**

Sec.	Formation	Depth, Feet		Feet of Sand	Avg. Perm.	Avg. Por.	Avg. Oil Sat.	Avg. Water Sat.	Avg. Oil Content Bbl./A.Ft
		From	To						
	<b>SIMPSON SAND</b>								
1	--	3351.0	3360.5	9.5	0.5	8.2	22	64	140
2	Water	3362.4	3383.9	14.3	5.7	14.8	2.9	61	33
3	Oil	3394.3	3398.0	3.7	28.	14.6	17	39	193
4	--	3398.0	3402.0	4.0	0.3	17.2	4.7	59	63
5	Oil	3412.1	3420.3	6.4	21.	17.6	16.	41	218
6	--	3420.3	3440.5	10.1	0.7	10.1	16	63	125
3&5	Oil	3394.3	3420.3	10.1	24.	16.6	16	40	209

Recommended  
Shot, Qts./Ft.

Permeability, Millidarcys

0 2 4 340 320 300 280 260 240 220 200 180 160 140 120 100 80 60 40 20 0

Fm. Leg

Depth  
Feet

Percent Oil Sat.  
0 20 40 60 80

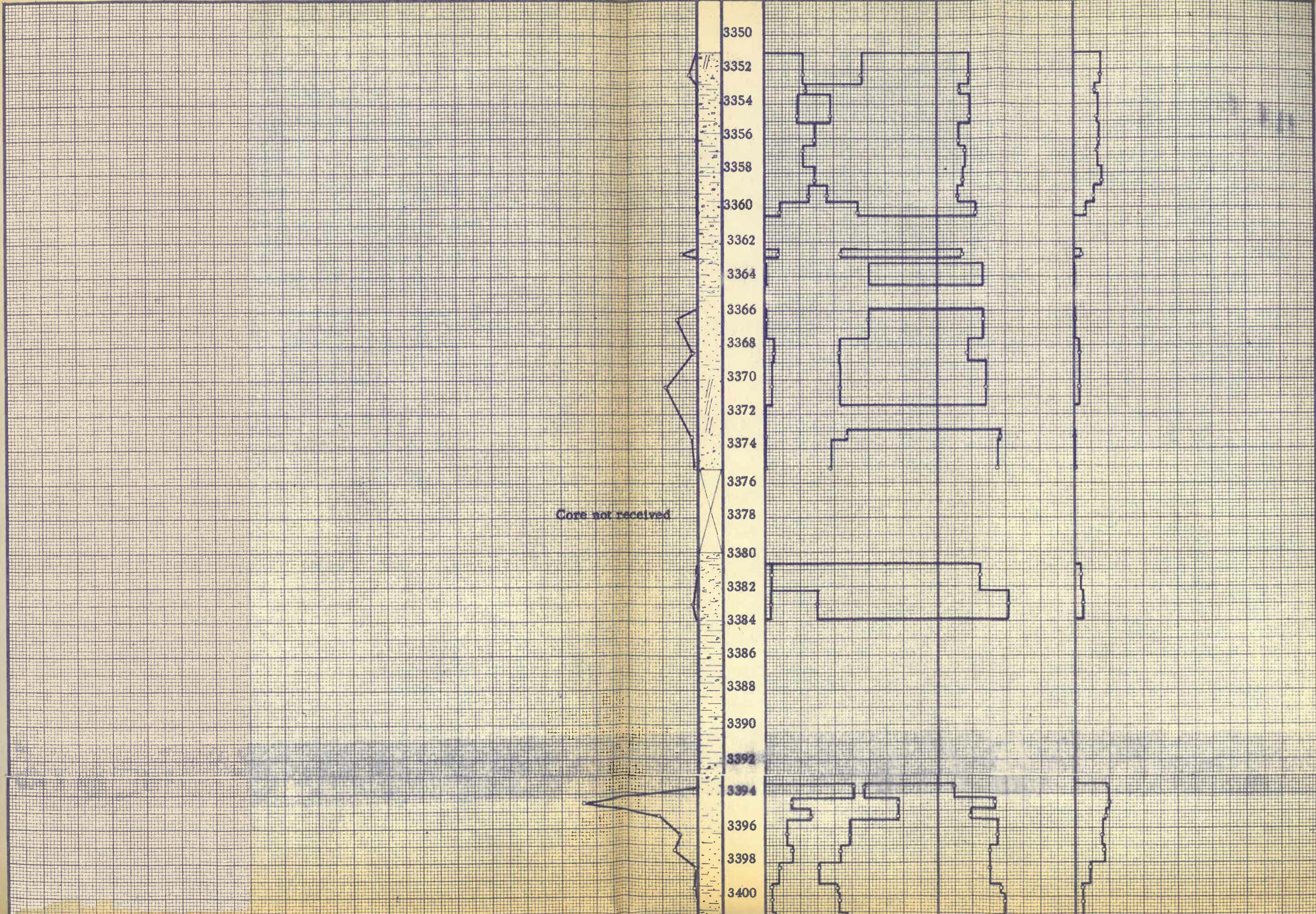
Percent Water Sat.  
0 20 40 60 80

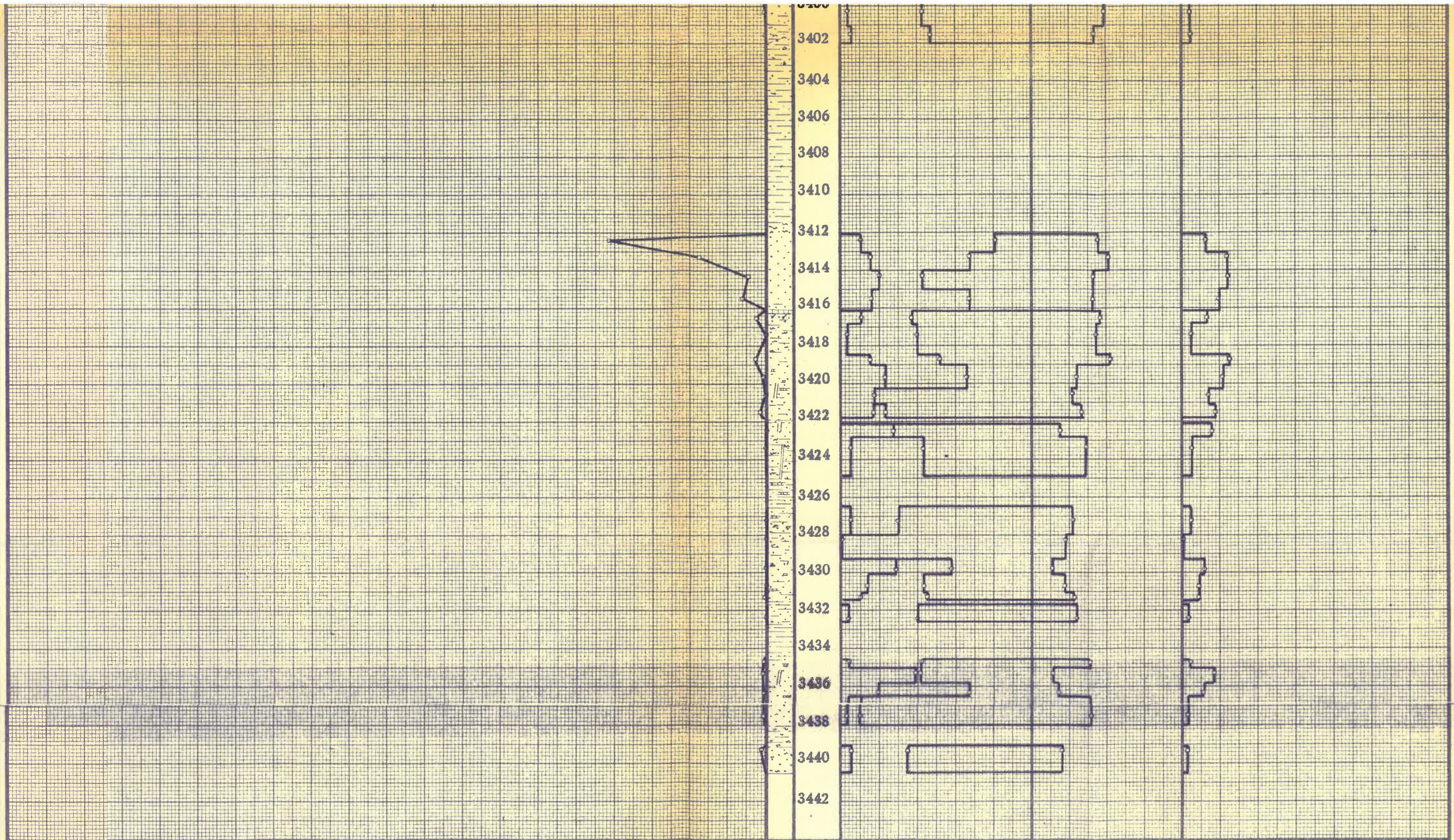
Percent Porosity  
0 10 20 30

Oil Content, Bbls./A.Ft.  
0 200 400 600 800 1000 1200

3350  
3352  
3354  
3356  
3358  
3360  
3362  
3364  
3366  
3368  
3370  
3372  
3374  
3376  
3378  
3380  
3382  
3384  
3386  
3388  
3390  
3392  
3394  
3396  
3398  
3400

Core not received





Sec.	Sand	Depth, Feet		Net Ft. of Sand	Avg. Por.	Average Core Sat.		Core Oil Content		Permeability		Flood Pot Residuals			
		From	To			Oil	Water	Avg. B./A.Ft.	Total Bbl./Ac.	Avg. Mds.	Capacity Ft. x Md.	Saturation		Oil Content	
												Oil	Water	B./A.Ft.	Bbl./Ac.
1	--	3351.0	3360.5	9.5	8.2	22.	64	140	1,150	0.5	4.8				
2	Water	3362.4	3383.9	14.3	14.8	2.9	61	33	470	5.7	82.				
3	Oil	3394.3	3398.0	3.7	14.6	17	39	193	710	28.	103.				
4	--	3398.0	3402.0	4.0	17.2	4.7	59	63	250	0.3	1.2				
5	Oil	3412.1	3420.3	6.4	17.6	16.	41	218	1,400	21.	135.				
6	--	3420.3	3440.5	10.1	10.1	16	63	125	1,270	0.7	7.1				
3&5	Oil	3394.3	3420.3	10.1	16.6	16	40	209	2,110	24.	238.				

COMPANY KEWANEE OIL COMPANY  
 LEASE STRICKLAND WELL NO. 3  
 LOCATION 330' fr S.L., 1015' fr. W.L. SW/4  
 SEC. 34 T. 26-S R. 1-E COUNTY Sedgwick  
 STATE Kansas DATE 7-20-57  
 EARLOUGHER ENGINEERING TULSA, OKLAHOMA