

WELL COMPLETION REPORT AND DRILLER'S LOG

KANSAS
State Geological Survey
WICHITA BRANCH

22-26-2E

S. 22 T. 26S R. 2E E W

Loc. NW-SE-NW

County Sedgwick

API No. 15 — 173 — 20,247
County Number

Operator
Walnut Valley Oil, Inc.

Address
150 S. Rock Road Wichita, KS 67207

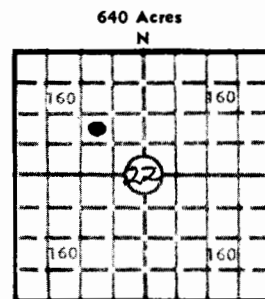
Well No. 1 Lease Name Jefferies

Footage Location 990' from N' 660' from S' feet from (N) (S) line 330' from (E) (W) line 660' from (E) (W) line

Principal Contractor Aspen Oil, Inc. Geologist BRADEN PETROLEUM

Spud Date 2-02-80 Date Completed 2-22-80 Total Depth 3367' P.B.T.D.

Directional Deviation Oil and/or Gas Purchaser TOTAL PETROLEUM



Locate well correctly

Elev.: Gr. 1389'

DF KB 1394'

CASING RECORD

Report of all strings set — surface, intermediate, production, etc.

Purpose of string	Size hole drilled	Size casing set (in O.D.)	Weight lbs/ft.	Setting depth	Type cement	Sacks	Type and percent additives
Surface	12 1/4"	8 5/8"		196	Common	145	3% CC
Production	7 7/8"	5 1/2"		3386'	Common	150	

LINER RECORD

PERFORATION RECORD

Top, ft.	Bottom, ft.	Sacks cement	Shots per ft.	Size & type	Depth interval
			2	3 1/2" DM L	3236'-3238'
			2	3 1/2" DM L	3204'-3206'

TUBING RECORD

Size	Setting depth	Packer set at
2 1/2"	1800'	

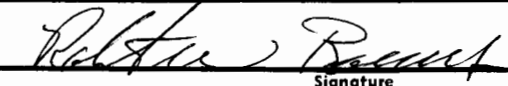
ACID, FRACTURE, SHOT, CEMENT SQUEEZE RECORD

Amount and kind of material used	Depth interval treated
NONE	

INITIAL PRODUCTION

Date of first production 3-20-80	Producing method (flowing, pumping, gas lift, etc.) Pumping
RATE OF PRODUCTION PER 24 HOURS 13.36 bbls.	Gas - 0- MCF
Oil	Water
Gas-oil ratio	CFPB
Disposition of gas (vented, used on lease or sold)	Producing interval(s)

INSTRUCTIONS: As provided in KCC Rule 82-2-125, within 90 days after completion of a well, one completed copy of this Drillers Log shall be transmitted to the State Geological Survey of Kansas, 4150 Monroe Street, Wichita, Kansas 67209. Copies of this form are available from the Conservation Division, State Corporation Commission, 245 No. Water, Wichita, Kansas 67202. Phone AC 316-522-2206. If confidential custody is desired, please note Rule 82-2-125. Drillers Logs will be on open file in the Oil and Gas Division, State Geological Survey of Kansas, Lawrence, Kansas 66044.

Operator Walnut Valley Oil, Inc.		DESIGNATE TYPE OF COMP.: OIL, GAS, DRY HOLE, SWDW, ETC.:					
Well No. 1	Lease Name Jefferies	OIL					
S <u>22</u> T <u>26S</u> R <u>2E</u> ^E / _W							
WELL LOG <small>Show all important zones of porosity and contents thereof; cored intervals, and all drill-stem tests, including depth interval tested, cushion used, time tool open, flowing and shut-in pressures, and recoveries.</small>		SHOW GEOLOGICAL MARKERS, LOGS RUN, OR OTHER DESCRIPTIVE INFORMATION.					
FORMATION DESCRIPTION, CONTENTS, ETC.	TOP	BOTTOM	<table border="1" style="width: 100%; border-collapse: collapse;"> <tr> <th style="padding: 5px; text-align: center;">NAME</th> <th style="padding: 5px; text-align: center;">DEPTH</th> </tr> <tr> <td colspan="2" style="height: 500px;"></td> </tr> </table>	NAME	DEPTH		
NAME	DEPTH						
Top soil shale shale / lime shale shale / lime lime / shale shale & sand shale & lime sand / shale lime / mississippi lime sand / shale lime / shale viola shale	0 30 220 411 691 691 2468 2468 2670 2670 2750 2968 3032 3032 3098 3098 3156 3156 3186 3186 3210 3210 3217	30 220 411 691 2468 2670 2750 2968 3032 3098 3156 3186 3210 3217 3367	T.D.				
USE ADDITIONAL SHEETS, IF NECESSARY, TO COMPLETE WELL RECORD.							
Date Received	<div style="text-align: right;">  Signature </div> <div style="text-align: right;"> PRESIDENT Title </div> <div style="text-align: right;"> 4-3-80 Date </div>						

658411

99-99-96