

RUSSELL OPERATING COMPANY  
WELL COMPLETION REPORT

LEASE G. Aed PROJECT ELSMORE WEST WELL NO. W-1  
~~W-1~~

Location: 325 Ft. from NS Line  
475 Ft. from WE Line  
Sec. 10 Twp. 24S Rge. 20E  
ALLEN County,

Contractor: M & M Drilling  
922 S. 2nd  
Address: Trinidad City, La  
70556

Elevation: G.L. <sup>983.4</sup> 993.7 Ft.  
K.B. \_\_\_\_\_ Ft.

Date Drilling Commenced 8-25-76  
Date Drilling Completed 8-29-76  
Date Well Completed 9-23-76

Type Rig: Rotary

Initial Production: \_\_\_\_\_ BOPD  
\_\_\_\_\_ BWPD

Total Depth: 760 Ft. Cored Interval From 692 Ft. to 714.3 Ft.  
Top of Pay 692.2 Ft. Bottom Pay 713.0 Ft. Gross Pay 20.8 Ft.

Type Logs Run: Gamma Ray Top Pay Log Depth \_\_\_\_\_ Ft. Bottom \_\_\_\_\_ Ft.

Completion Interval(s): From 697 Ft. to 710 Ft. Sh/ft. 14 shots  
From \_\_\_\_\_ Ft. to \_\_\_\_\_ Ft. Sh/ft. \_\_\_\_\_  
From \_\_\_\_\_ Ft. to \_\_\_\_\_ Ft. Sh/ft. \_\_\_\_\_

Remarks: 4 3/4" hole, no casing, uncased annulus

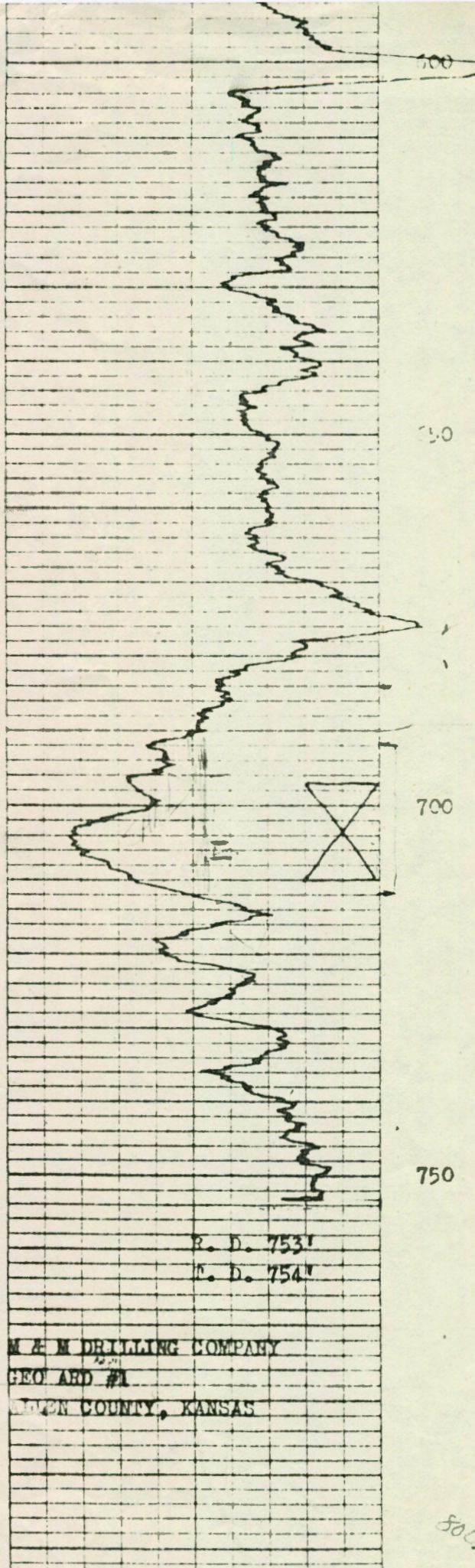
Core Analysis  
Summary:

Section	From Feet	To Feet	Net		Por. %	Perm. %	Oil %	Water %
			Pay Feet	Pay Feet				
(See Core Report)								
_____	_____	_____	_____	_____	_____	_____	_____	_____
_____	_____	_____	_____	_____	_____	_____	_____	_____
_____	_____	_____	_____	_____	_____	_____	_____	_____

Treatment Record: Bbl. Fracturing Fluid 80  
Sand Used 30 sacks 12-30 10 sacks 10-20  
Breakdown Pressure 1500 to \_\_\_\_\_  
Treating Pressure 1400 to 1300  
Average Pump Rate 8 Instant S.I. Pressure 500

Remarks: \_\_\_\_\_

Surface Casing - Size 6 in. 7 Ft. \_\_\_\_\_ Sx cement.  
Oil String - Size 2 in. 756 Ft. \_\_\_\_\_ Sx cement.



PERFORATED 14 INCHES FROM 597'-710' WITH 1 1/2"

Placed on Pump  
 9/8/77  
 Faced 1/9/6/77  
 80 Bbls oil & 305 Ks 50  
 Oil from Michley "D"

*Russell's Well*

R. D. 753'  
 R. D. 754'

M & M DRILLING COMPANY  
 GEO. ARD #1  
 WAGON COUNTY, KANSAS

800