

OILFIELD RESEARCH LABORATORIES

536 NORTH HIGHLAND - CHANUTE, KANSAS 66720 - PHONE (316) 431-2650

August 11, 1980

KLI Petroleum Corporation
808 Southeast Sixth Street
Evansville, Indiana 47708

Gentlemen:

Enclosed herewith are the results of tests run on the rotary core taken from the Nelson Lease, Well No. K-50, Allen County, Kansas and submitted to our laboratory on July 8, 1980.

The core was sampled and sealed in plastic bags by a representative of the client.

Your business is greatly appreciated.

Very truly yours,

OILFIELD RESEARCH LABORATORIES


Sanford A. Michel

BRP/ks

3 c to Evansville, Indiana

- REGISTERED ENGINEERS -

CORE ANALYSIS - WATER ANALYSIS - REPRESSURING ENGINEERING - SURVEYING & MAPPING - PROPERTY EVALUATION & OPERATION

Oilfield Research Laboratories
GENERAL INFORMATION & SUMMARY

Company KLI Petroleum Corporation Lease Nelson Well No. K-50
 Location 800' NSL & 650' WEL, SW $\frac{1}{4}$
 Section 21 Twp. 26S Rge. 21E County Allen State Kansas

Elevation, Feet	-
Name of Sand	Bartlesville
Top of Core	621.0
Bottom of Core	689.0
Top of Sand	621.0
Bottom of Sand	686.8
Total Feet of Permeable Sand	21.6

Distribution of Permeable Sand: Permeability Range Millidarcys	Feet	Cum. Ft.
0 - 4	13.0	13.0
4 - 12	3.7	16.7
12 - 36	2.8	19.5
36 & above	2.1	21.6

Average Permeability Millidarcys	10.8
Average Percent Porosity	12.4
Average Percent Oil Saturation	27.6
Average Percent Water Saturation	43.3
Average Oil Content, Bbls./A. Ft.	282.
Total Oil Content, Bbls./Acre	8,884.

OILFIELD RESEARCH LABORATORIES

LOGName KLI Petroleum Corporation Lease Nelson Well No. K-50

<u>Depth Interval,</u> <u>Feet</u>	<u>Description</u>
621.0 - 623.1	Brown slightly calcareous sandstone.
623.1 - 623.8	Brown slightly calcareous very shaly sandstone.
623.8 - 624.8	Brown sandstone.
624.8 - 626.3	Brown very shaly sandstone.
626.3 - 628.7	Grayish brown hard calcareous very shaly sandstone.
628.7 - 652.2	Gray sandy shale.
652.2 - 655.3	Grayish brown very shaly sandstone.
655.3 - 655.9	Gray sandy shale.
655.9 - 656.8	Brown very shaly sandstone.
656.8 - 660.3	Gray sandy shale.
660.3 - 671.6	Grayish brown very shaly sandstone.
671.6 - 676.1	Gray sandy shale.
676.1 - 676.9	Grayish brown shaly sandstone.
676.9 - 677.8	Brown sandstone.
680.0 - 681.9	Light brown shaly sandstone.
681.9 - 682.8	Brown sandstone.
682.8 - 686.8	Brown shaly sandstone.
686.8 - 689.0	Gray shale.

Oilfield Research Laboratories

SUMMARY OF PERMEABILITY & SATURATION TESTS

TABLE III

Company KLI Petroleum Corporation Lease Nelson Well No. K-50

Depth Interval, Feet	Feet of Core Analyzed	Average Permeability, Millidarcys	Permeability Capacity Ft. x Md.
621.0 - 671.6	13.1	12.7	166.09
676.1 - 686.8	8.5	7.9	67.00
621.0 - 686.8	21.6	10.8	233.09

Depth Interval, Feet	Feet of Core Analyzed	Average Percent Porosity	Average Percent Oil Saturation	Average Percent Water Saturation	Average Oil Content Bbl./A. Ft.	Total Oil Content Bbls./Acre
621.0 - 671.6	23.0	12.0	26.9	43.3	266	6,107
676.1 - 686.8	8.5	13.6	29.4	43.2	327	2,777
621.0 - 686.8	31.5	12.4	27.6	43.3	282	8,884

Oilfield Research Laboratories

RESULTS OF SATURATION & PERMEABILITY TESTS

TABLE I-B

Company KLI Petroleum Corporation Lease Nelson Well No. K-50

Sample No.	Depth, Feet	Effective Porosity Percent	Percent Saturation			Oil Content Bbls. / A Ft.	Perm., Mill.	Feet of Sand		Total Oil Content	Perm. Capacity Ft. X md.
			Oil	Water	Total			Ft.	Cum. Ft.		
1	621.5	13.9	26	28	54	280	35.	1.0	1.0	280	35.00
2	622.5	10.6	25	35	60	206	39.	1.1	2.1	227	42.90
3	623.5	8.5	41	19	60	270	0.22	0.7	2.8	189	0.15
4	624.5	14.0	30	32	62	326	76.	1.0	3.8	326	76.00
5	625.5	16.8	39	10	49	508	1.7	1.5	5.3	762	2.55
6	626.5	14.9	45	23	68	520	Imp.	0.7	6.0	364	0.00
7	627.5	12.2	26	31	57	246	Imp.	1.0	7.0	246	0.00
8	628.5	6.1	24	70	94	114	Imp.	0.7	7.7	80	0.00
9	652.5	13.7	33	19	52	351	0.16	0.8	8.5	281	0.13
10	653.5	10.5	30	35	65	244	1.6	1.0	9.5	244	1.60
11	654.8	15.0	18	30	48	210	Imp.	1.3	10.8	273	0.00
12	656.5	7.0	20	75	95	109	Imp.	0.9	11.7	98	0.00
13	660.7	11.0	24	44	68	205	Imp.	0.7	12.4	144	0.00
14	661.4	12.4	17	38	55	164	0.24	1.0	13.4	164	0.24
15	662.5	13.7	31	38	69	330	0.52	1.0	14.4	330	0.52
16	663.5	15.4	31	29	60	370	0.42	1.0	15.4	370	0.42
17	664.5	8.8	13	81	94	89	Imp.	1.0	16.4	89	0.00
18	665.3	11.3	34	59	93	298	0.30	1.0	17.4	298	0.30
19	666.2	14.2	34	48	82	375	Imp.	1.0	18.4	375	0.00
20	667.5	7.9	13	80	93	80	0.28	1.0	19.4	80	0.28
21	668.7	8.8	11	73	84	75	Imp.	1.0	20.4	75	0.00
22	669.5	17.4	48	16	64	648	6.0	1.0	21.4	648	6.00
23	670.5	7.9	21	73	94	129	Imp.	1.0	22.4	129	0.00
24	671.5	8.3	9	84	93	58	Imp.	0.6	23.0	35	0.00
25	676.5	12.1	39	19	58	366	3.1	0.8	23.8	293	2.48
26	677.5	14.3	19	36	55	211	15.	0.9	24.7	190	13.50
27	680.5	15.1	32	31	63	375	8.0	1.0	25.7	375	8.00
28	681.5	9.8	14	70	84	106	5.4	0.9	26.6	95	4.86
29	682.5	16.1	40	27	67	500	29.	0.9	27.5	450	26.10
30	683.5	14.8	30	44	74	345	2.3	1.2	28.7	414	2.76

Oilfield Research Laboratories

RESULTS OF SATURATION & PERMEABILITY TESTS

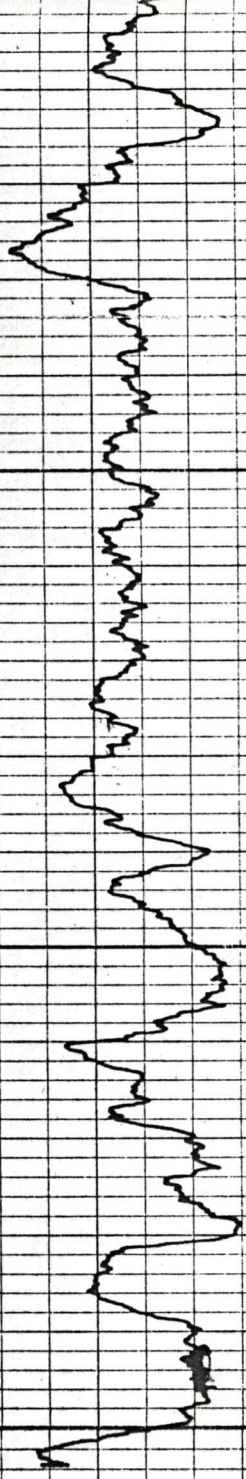
TABLE 1-B

Company KLI Petroleum Corporation

Lease Nelson

Well No. K-50

Sample No.	Depth, Feet	Effective Porosity Percent	Percent Saturation			Oil Content Bbls. / A Ft.	Perm., Mill.	Feet of Sand		Total Oil Content	Perm. Capacity Ft. X md.
			Oil	Water	Total			Ft.	Cum. Ft.		
31	684.5	16.7	39	41	80	505	2.7	1.0	29.7	505	2.70
32	685.7	13.8	38	41	79	407	1.8	1.0	30.7	407	1.80
33	686.4	7.7	10	83	93	60	6.0	0.8	31.5	48	4.80



620
630
21 X

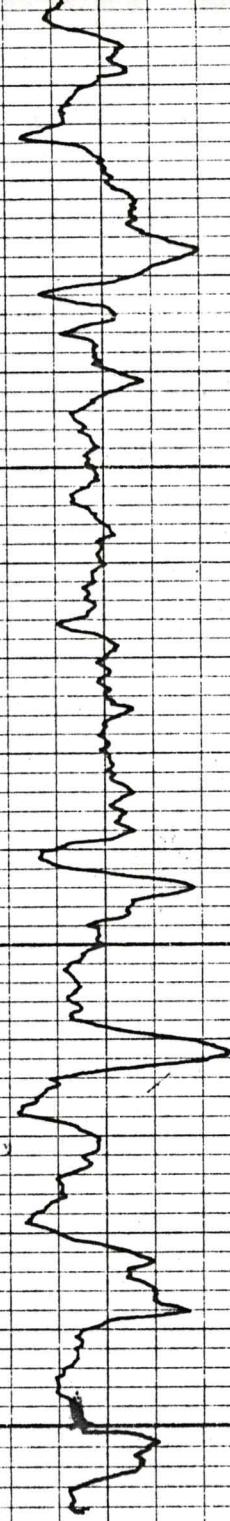
650

672
6769 X
681
688 X

700

750

R.D. 753'
T.D. 759'



SEATING NIPPEL 666'

R.D. 758'
T.D. 759'

K. L. I. PETROLEUM
NELSON # K-50
ALLEN COUNTY, KS
7-7-80