

Savonburg Field  
Nelson K-50  
Page 3

November 15, 1984:

Reason for Job: To Increase Injection in the "C" Section, currently 0 B/D @ 730 psi. Recommended 40 B/D.

Rigged up Splane Well Servicing Unit and company wash equipment. Unseated 1" x 2½" Arrow tension packer set @ 651'. Pulled pipe out, reran 1" and washed to 745'. Spotted 30 gallons acid @ 690'. Displaced out of 1" and pulled pipe. Hooked on 2½" casing and displaced acid out of pipe with 2 Bbls. of lease salt water. Reran 1" x 2½" Arrow tension packer and set @ 651'. Hooked on the 1" injection string and pressured up to 750 psi. The well finally broke down @ 1100 psi. During the time we were trying to break the "C" section, there was no communication on the "A" section. Hooked the 2 zones back up on injection. The "A" section had 140 psi and the "C" section 190 psi. Both zones took about 3 Bbls. in 1 hr.

November 16, 1984:

22 Bbls. @ 240 psi.

November 17, 1984:

49 Bbls. @ 260 psi.

January 29, 1986:

Reason For Job: To pull split injection packer and close well in.

Rigged up Splane well servicing. It was decided to pull the split zone injection string in the well, and close well in for now. The "A" zone will take, but the "C" zone will not. After looking at the 5 spots, it is shown that there are no wells pumping or flowing around this well, that are open in the "C" section. Pulled 1" and packer out and closed well in. Rigged down.

October 3, 1994:

Ran steel line measurement to 747'.

Well will flow. Plan to run delta temperature survey.

*To Abilene, Weaver, JAF 11-17-94*

savonburg Field

Nelson K-50

Page 4

June 19, 1995:

To clean well and isolate injection into the B3 Zone.

Using Company pulling machine, ran jet bit on string of 1" 10RD to T.D. of 747'. Used one gallon Goldtreat, one gallon ESA-50 in 80 barrels of water. Washed well clean, caught sample of returns. Pulled up to 688', dropped ball, jetted up to 668' and collected samples of returns.

Spotted 150 gallons acid at 688', three gallons Goldtreat, 3 gallons ESA-96, three quarts ESA-91, three pints ESA-50. Put acid and chemicals away with 20 barrels treated wash water at 300 PSI. Shut well in overnight.

June 20, 1995:

Washed well to T.D. Pulled 1" and jet bit. Ran a new Bolt Pressure Packer on a string of 1" 10RD plastic coated <sup>tpg.</sup> with inserts in collars. Set packer at 657.90' in tension. Hooked well up to injection.

June 30, 1995:

Pressured up on 1" to establish injection into the lower perforations. Using Company pump truck, tied on to 1" and slowly brought pressure up to 1200 PSI. Well started taking fluid. Pumped one-half barrel and shut pump down. Pressure fell to 700 PSI. Pumped one barrel, pressure was 900 PSI. Well started taking better and a rate of one barrel per three-minute rate. Shut pump down and pressure fell to 300 PSI.

Finished job at a rate of one barrel per three-minute rate for a total injection of ten barrels. Put well on injection line at 40 barrels per day rate at 460 PSI.

Filled annulus to check for packer leak; no leak.

NOTE: Well did not break.

Unit 120 Pump Truck: 2½ hrs.

To Ab. line, Weaver, Jeff  
7-3-95  
To Larry 10-75 91

Savonburg Field

Nelson K-50

Page 5

2 7/8" Casing @ 795'

PBTD: 759'

Packer @ 658'

Perforations: 620' - 630'

672' - 676'

681' - 686'

To Pump In and Start Injection

July 24, 1995:

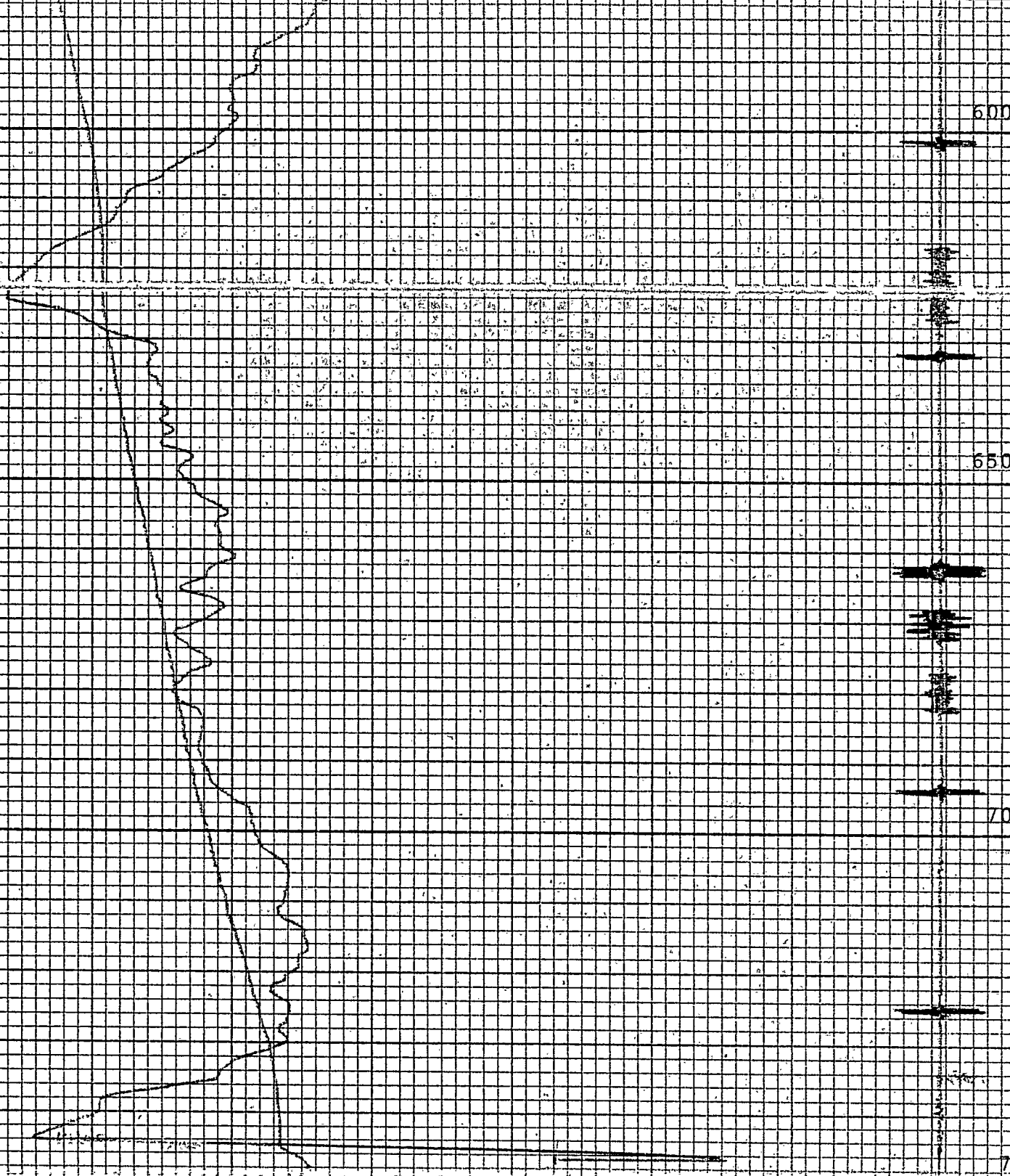
Using Unit #120 pump truck, tied onto 1". Pumped in well to establish rate - pressure at 1100 PSI. Well did not break; started taking at 800 PSI at a one-half barrel per minute rate.

Using lubricator, pumped in "two" stages, 30 gallons acid, two gallons Goldtreat, three gallons ESA-96, two quarts ESA-91 and one gallon ESA-50. Well started taking at 450 PSI to 500 PSI at a rate of one barrel per minute.

Put well on injection, taking at 340 PSI.

December 29, 1995:

Using John Almond Contract Services, ran MIT; well passed.



NELSON # K-50  
James E. RUSSELL PETROLEUM, INC.  
ALLEN COUNTY, KANSAS  
NOVEMBER 11, 1994

11-11-94 TEMP. SURVEY

21-26S-21E