

21-26-216

May 19, 1994:

Set up Company pulling unit and ran string of 1" pipe with small bit to bottom of 706'. Washed well clean recovering mostly iron and scale. Pulled up to bottom of perforations and spotted 55 gallons 15% acid with one quart surfactant. Pulled out remainder of pipe. Hooked up to Company pump truck and pushed acid into perforations. Shut in overnight and turned back on the next morning.

April 18, 1995:

Ran steel line measure to T.D. of 672'.

April 20, 1995:

Ran coil tubing to bottom of lower perforations. Pumped 25 gallons of 28% HCl acid mixed with two gallons of Goldtreat, one gallon of ESA #96, one quart of ESA #91, and one pint of ESA #50 with small pump. Pulled coil tubing and pushed three barrels of injection water into wellbore. Let set overnight then started at normal injection rate.

April 21, 1995:

Ran coil tubing to bottom of lower perforations. Pumped 25 gallons of 28% HCl acid mixed with two gallons of ESA #96, one quart of ESA #91, and one gallon of ESA #50 with small pump. Pulled coil tubing and pushed three barrels of injection water into wellbore. Let set overnight and started at normal injection rate.

April 11, 1996:

Ran down with coil tubing unit. Spotted 50 gallons acid, two gallons ESA #96, two gallons ESA #91, and two quarts ESA #50, where anchor hit solids. Pulled out and hooked up to injection system. Pushed back acid with two barrels water and shut-in overnight. Will turn back on at normal injection rate.

March 31, 1997:

Using J & K, Inc., ran MIT; well passed.

Savonburg Field

Nelson #KW-11

Page 5

September 11, 1997:

Ran SLM to 670'. Using coil tubing unit, acidized with 50 gallons 28% acid, two gallons ESA-96, one quart ESA-91, and one quart ESA-50. Let set overnight.

19 bbls. @ 640 lbs.

September 12, 1997:

Ran back in and spotted 50 gallons 15% acid on perforations. Pulled out and put back on injection system.

20 bbls. @ 640 lbs.

October 9, 1997:

Using Cornish Wireline, ran Temperature Log to 678.7'.

April 24, 1998:

Ran steel measuring line to T.D. of 676'.

Using coil tubing unit, acidized with 50 gallons 28% acid, one gallon Goldtreat, one gallon ESA-96, one quart ESA-91, one pint ESA-50.

April 28, 1998:

Repeated above treatment.

April 29, 1998:

31 bbls. @ 450 PSI

April 30, 1998:

44 bbls. @ 610 PSI

May 1, 1998:

44 bbls. @ 610 PSI

October 21, 1998:

Using coil tubing unit, acidized with 50 gallons 28% acid, two gallons Goldtreat, two gallons ESA-96, two quarts ESA-91, and two pints ESA-50. Left well shut-in.

October 23, 1998:

Repeated above treatment.

October 26, 1998:

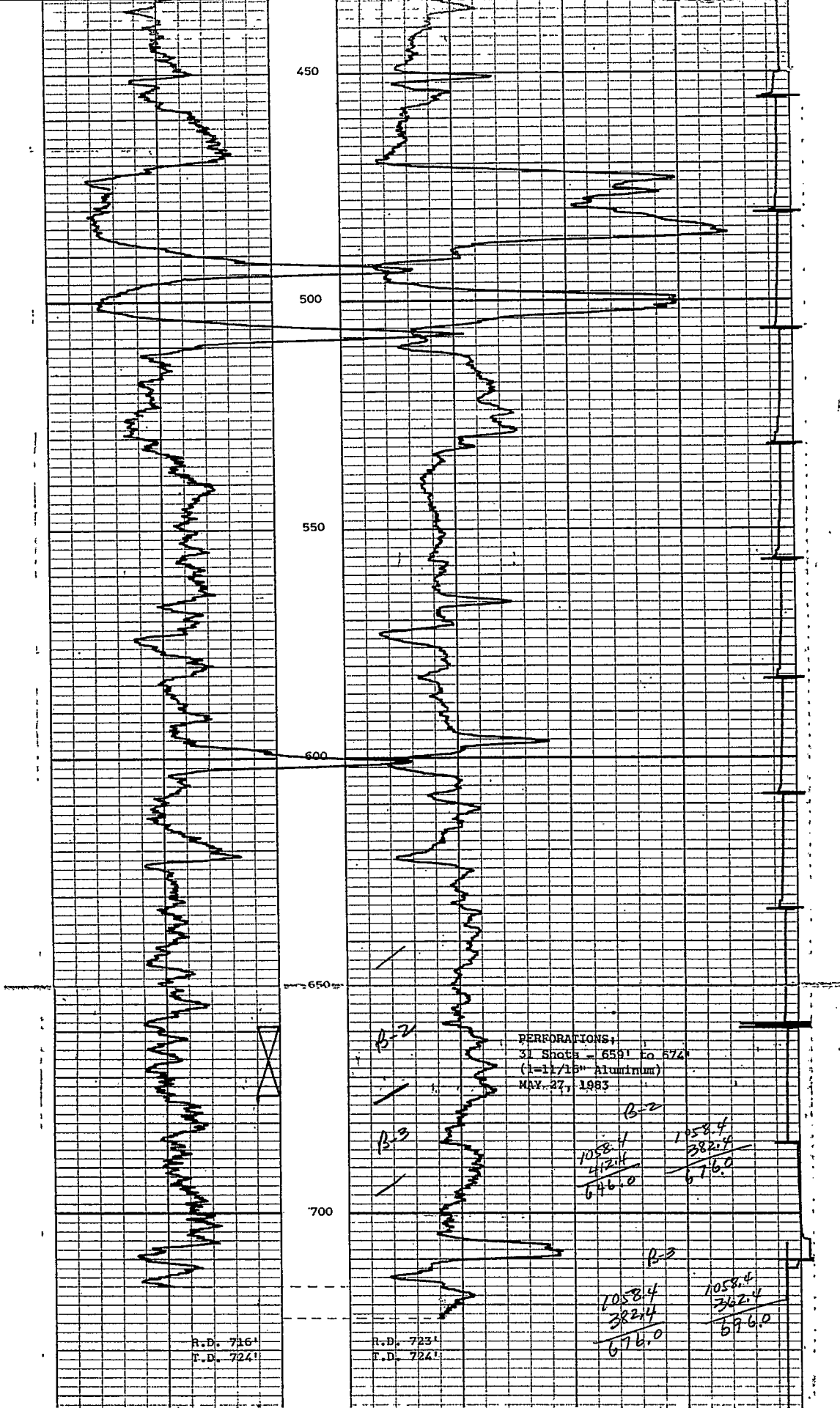
39 bbls. @ 650 PSI

October 27, 1998:

35 bbls. @ 660 PSI

October 28, 1998:

35 bbls. @ 660 PSI

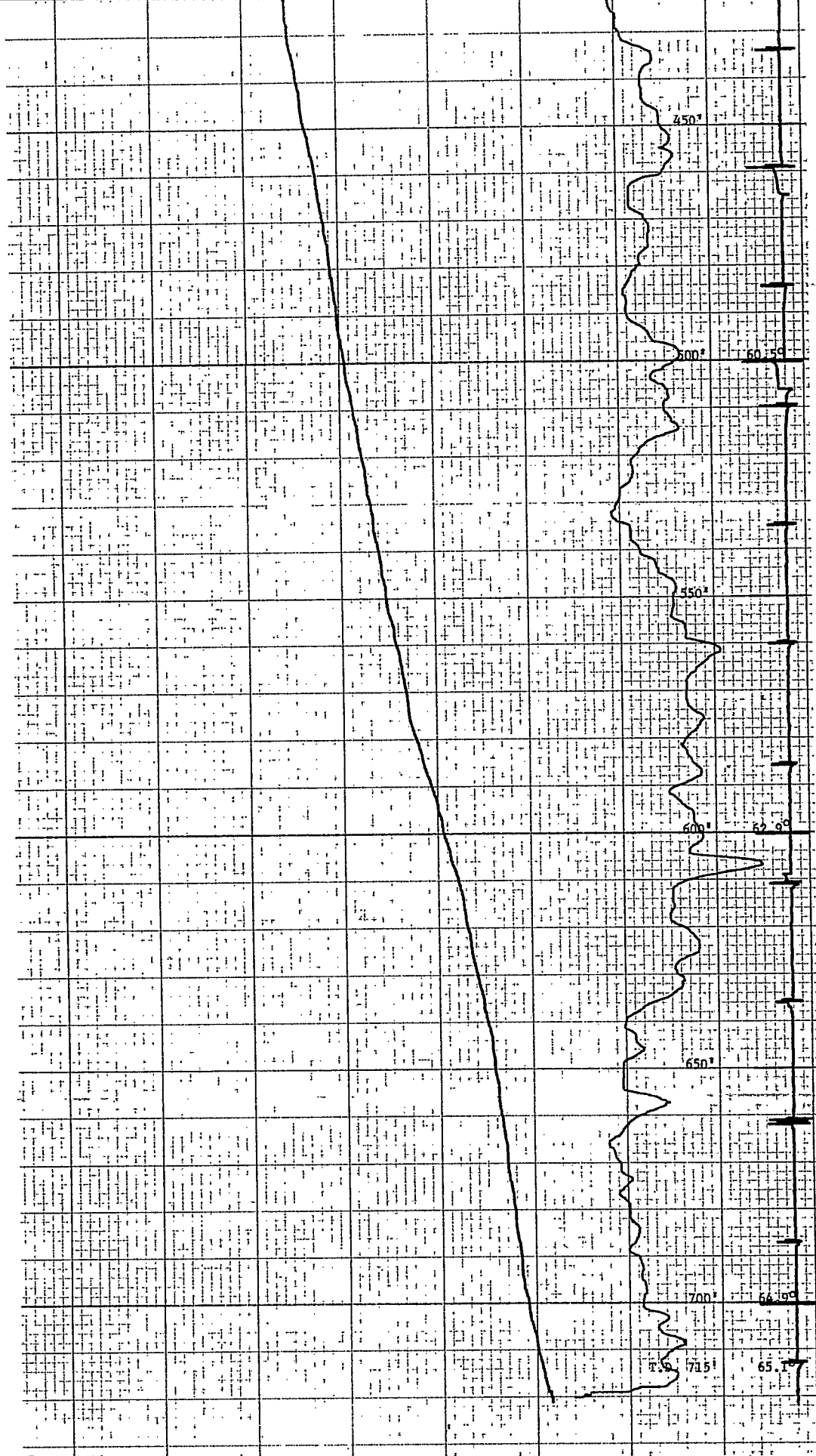


11-3-82

SONIC BOND LOG

DEPTH

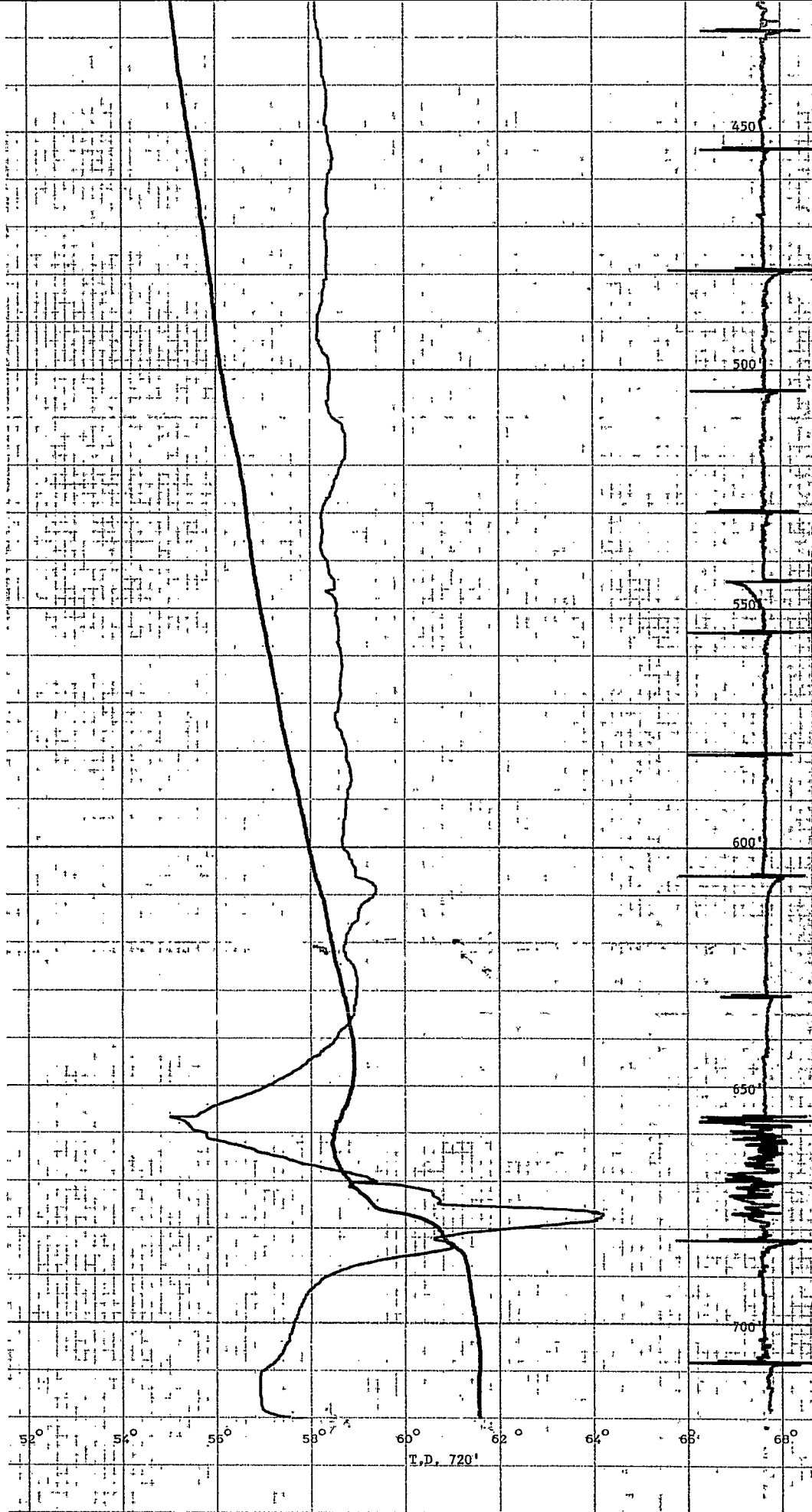
PIPE BOND FORMATION BOND
 ← BOND INCREASES BOND DECREASES →



NELSON NO. KW-11
 JAMES E. RUSSELL PETROLEUM, INC.
 ALLEN COUNTY, KANSAS
 OCTOBER 29, 1982

10-29-82 GR/N
 11-3-82 SBL
 1-4-83 TEMP SURVEY

21-26S-21E

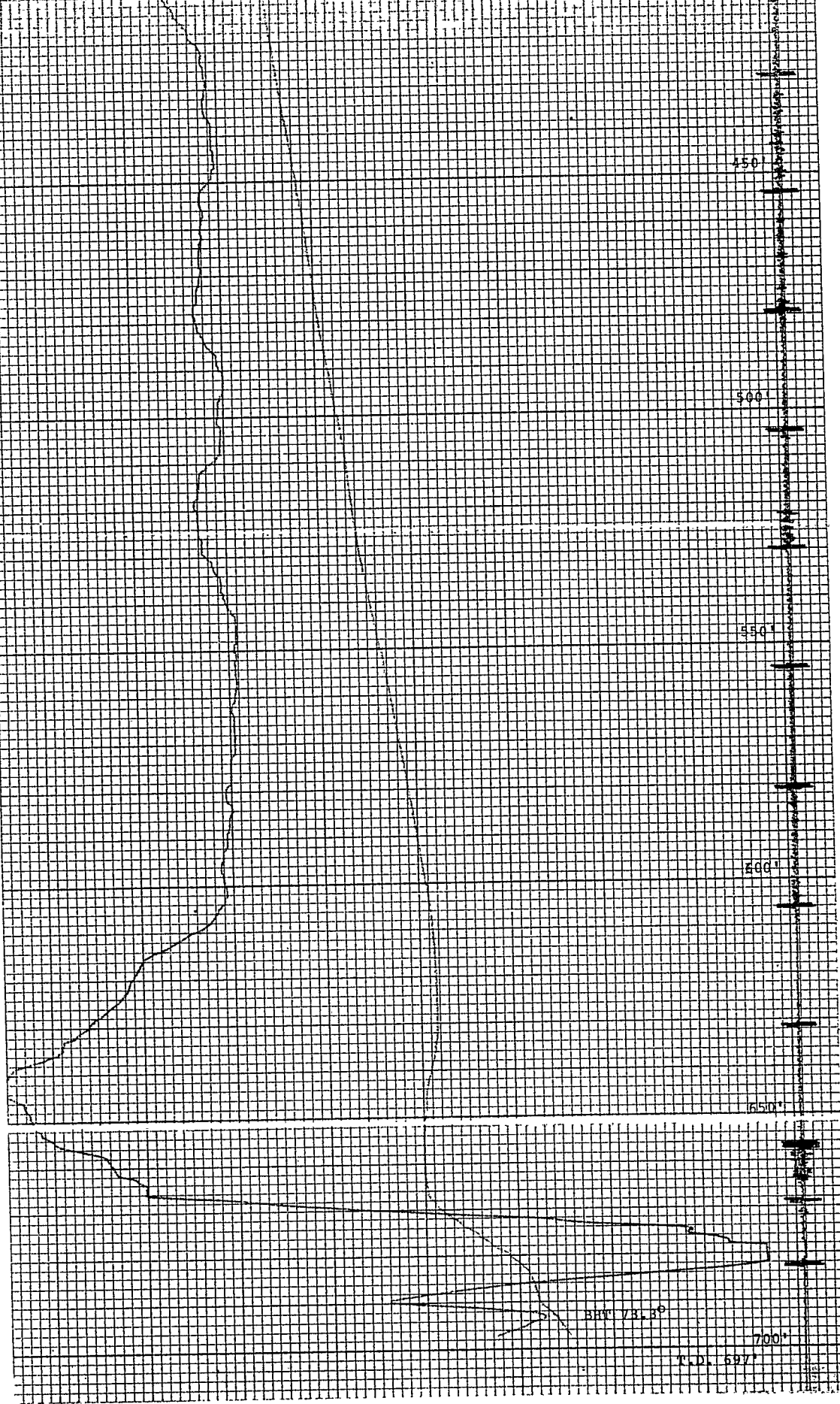


NELSON NO. KW-11

7-6-83 TEMP SURVEY

JAMES E. RUSSELL PETROLEUM, INC.

ALLEN COUNTY, KANSAS



NELSON KW-11

6-17-94 Temp Survey

JAMES E. RUSSELL PETROLEUM, INC.

ALLEN COUNTY, KANSAS

JUNE 17, 1994

21-26S-21E