

7-26-22E

*and*

STATE CORPORATION COMMISSION OF KANSAS  
OIL & GAS CONSERVATION DIVISION  
WELL COMPLETION OR RECOMPLETION FORM  
ACO-1 WELL HISTORY  
DESCRIPTION OF WELL AND LEASE

API NO. 15-011-22,640  
County Bourbon  
NE NE SW Sec 7 Twp 26 Rge 22  East  
West

Operator: License # 3206  
Name Aspen Oil & Gas Co.  
Address P.O. Box 598  
City/State/Zip Chanute, KS 66720

2310 Ft North from Southeast Corner of Section  
2970 Ft West from Southeast Corner of Section  
(Note: Locate well in section plat below)

Purchaser Enron  
Chanute, KS

Lease Name Daniels Well # 1

Operator Contact Person Walter S. Plant  
Phone (316) 431-2536

Field Name Savonburg

Producing Formation Mississippian

Elevation: Ground Unknown KB

Contractor: License # 5378  
Name Fleming Drilling Co.

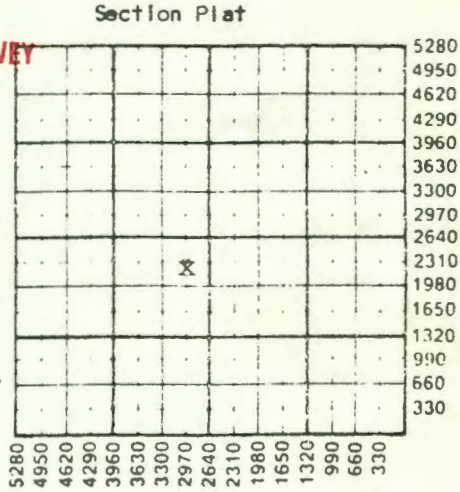
KANSAS GEOLOGICAL SURVEY  
WICHITA BRANCH

Wellsite Geologist Walter S. Plant  
Phone (316) 431-2536

APR 26 1989

Designate Type of Completion  
 New Well  Re-Entry  Workover  
 SWD  Temp Ab  
 Gas  Inj  Delayed Comp.  
 Dry  Other (Core, Water Supply etc.)

RECEIVED  
STATE CORPORATION COMMISSION  
APR 26 1989  
CONSERVATION DIVISION  
Wichita, Kansas



If CWNO: old well info as follows:  
Operator  
Well Name  
Comp. Date Old Total Depth

WATER SUPPLY INFORMATION

Disposition of Produced Water:  Disposal  
Docket #  Repressuring

Drilling Method:  
 Mud Rotary  Air Rotary  Cable

Questions on this portion of the ACO-1 call:  
Water Resources Board (913) 296-3717  
Source of Water:  
Division of Water Resources Permit #

10/15/1988 10/21/1988 10/23/1988  
Spud Date Date Reached TD Completion Date  
870' Total Depth PBTD

Groundwater.....Ft North from Southeast Corner  
(Well) .....Ft West from Southeast Corner of  
Sec Twp Rge East West  
Surface Water.....Ft North from Southeast Corner  
(Stream, pond etc).....Ft West from Southeast Corner  
Sec Twp Rge East West  
Other (explain).....  
(purchased from city, R.W.D. #)

Amount of Surface Pipe Set and Cemented at 20 feet  
Multiple Stage Cementing Collar Used?  Yes  No  
If yes, show depth set.....feet  
If alternate 2 completion, cement circulated  
from 760' feet depth to surface 4 SX cmt  
Cement Company Name Rig  
Invoice #

INSTRUCTIONS: This form shall be completed in triplicate and filed with the Kansas Corporation Commission, 200 Colorado Derby Building, Wichita, Kansas 67202, within 120 days of the spud date of any well. Rule 82-3-130, 82-3-107 and 82-3-106 apply. Information on side two of this form will be held confidential for a period of 12 months if requested in writing and submitted with the form. See rule 82-3-107 for confidentiality in excess of 12 months. A copy of all wireline logs and drillers time log shall be attached with this form. Submit CP-4 form with plugged wells. Submit CP-111 form with all temporarily abandoned wells.

requirements of the statutes, rules and regulations promulgated to regulate the oil and gas industry have fully complied with and the statements herein are complete and correct to the best of my knowledge.

Signature *Walter S. Plant*  
Walter S. Plant  
Title Partner Date 4/24/1989

K.C.C. OFFICE USE ONLY  
F  Letter of Confidentiality Attached  
C  Wireline Log Received  
C  Drillers Timelog Received  
Distribution  
 KCC  SWD/Rep  NGPA  
 KGS  Plug  Other  
(Specify)

Subscribed and sworn to before me this 24th day of April 1989...  
Notary Public *Susan J. Luellen*  
Date Commission Expires 1/7/91

NOTARY PUBLIC - State of Kansas  
SUSAN J. LUELLEN  
My Appt. Exp. 1/7/91

Sec. 7, Imp. & Rge. 22E

Operator Name Aspen Oil & Gas Co. Lease Name Daniels Well # 1

Sec. 7 Twp. 26 Rge. 22  East  West County Bourbon

WELL LOG

INSTRUCTIONS: Show important tops and base of formations penetrated. Detail all cores. Report all drill stem tests giving interval tested, time tool open and closed, flowing and shut-in pressures, whether shut-in pressure reached static level, hydrostatic pressures, bottom hole temperature, fluid recovery, and flow rates if gas to surface during test. Attach extra sheet if more space is needed. Attach copy of log.

Drill Stem Tests Taken  Yes  No  
 Samples Sent to Geological Survey  Yes  No  
 Cores Taken  Yes  No

Formation Description  
 Log  Sample

Name	Top	Bottom
Oswego	357	384
Cherokee	384	757
Mississippian	757	870 TD

No open hole or cased hole logs run.

CASING RECORD  New  Used  
 Report all strings set-conductor, surface, intermediate, production, etc.

Purpose of String	Size Hole Drilled	Size Casing Set (in O.D.)	Weight Lbs/Ft.	Setting Depth	Type of Cement	#Sacks Used	Type and Percent Additives
Surface	12"	6"	Unknown	20'	Portland	4	none
Production	5 1/2"	2 7/8"	6.5	760'	Portland	83	2% gel; 50-50 pos

Shots Per Foot	Specify Footage of Each Interval Perforated	Acid, Fracture, Shot, Cement Squeeze Record (Amount and Kind of Material Used)	Depth
	None - open hole completion		

TUBING RECORD Size Set At Packer at Liner Run  Yes  No

Date of First Production Producing Method  
 Flowing  Pumping  Gas Lift  Other (explain)

Estimated Production Per 24 Hours	Oil Bbl's	Gas MCF	Water Bbl's	Gas-Oil Ratio	Gravity
	DELAYED COMPLETION				

METHOD OF COMPLETION Production Interval

Disposition of gas:  Vented  Open Hole  Perforation  
 Sold  Other (Specify) .....  
 Used on Lease  Dually Completed .....  
 Commingled .....