

DIAMOND TESTING

P.O. Box 157
HOISINGTON, KANSAS 67544
(620) 653-7550 • (800) 542-7313
STC 21098.D133

Company Vess Oil Corporation Lease & Well No. Bloir "A" No. 31
Location 1375 KB Formation Arbuckle Effective Pay -- Ft. Ticket No. 2022
Date 6-27-05 Sec. 13 Twp. 26S Range 4E County Butler State Kansas
Test Approved By Paul Ramondetta Diamond Representative Roger D. Friedly

Formation Test No. 1 Interval Tested from 2,390 ft. to 2,399 ft. Total Depth 2,399 ft.
Packer Depth 2,385 ft. Size 6 3/4 in. Packer Depth -- ft. Size -- in.
Packer Depth 2,390 ft. Size 6 3/4 in. Packer Depth -- ft. Size -- in.
Depth of Selective Zone Set ft.

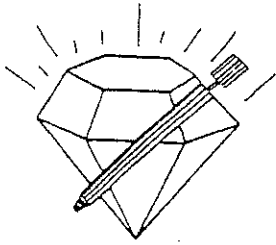
Top Recorder Depth (Inside) 2,378 ft. Recorder Number 21098 Cap. 5,000 psi
Bottom Recorder Depth (Outside) 2,396 ft. Recorder Number 13387 Cap. 4,000 psi
Below Straddle Recorder Depth ft. Recorder Number Cap. psi

Drilling Contractor C & G Drilling Company - Rig 1 Drill Collar Length 186 ft. I.D. 2 1/4 in.
Mud Type Chemical Viscosity 74 Weight Pipe Length -- ft. I.D. -- in.
Weight 9.6 Water Loss 11.2 cc. Drill Pipe Length 2,179 ft. I.D. 3 1/2 in.
Chlorides 1,900 P.P.M. Test Tool Length 25 ft. Tool Size 3 1/2 - IF in.
Jars: Make Bowen Serial Number Not Run Anchor Length 9 ft. Size 4 1/2 - FH in.
Did Well Flow? No Reversed Out No Surface Choke Size 1 in. Bottom Choke Size 5/8 in.
Main Hole Size 7 7/8 in. Tool Joint Size 4 FH in.

Blow: 1st Open: Weak, 1/8 in., blow. Increasing to 5 1/2 ins. No blow back during shut-in.
2nd Open: Weak surface blow in 3 mins. Increasing to 5 ins. No blow back during shut-in.

Recovered 36 ft. of muddy water with a scum of oil = .177120 bbls. (Grind out: 35%-mud; 65%-water)
Recovered 31 ft. of muddy water with a scum of oil = .152520 bbls. (Grind out: 20%-mud; 80%-water)
Recovered 93 ft. of salt water = .457560 bbls. (Grind out: 100%-salt water with a scum of oil)
Recovered 160 ft. of TOTAL FLUID = .787200 bbls.
Recovered ft. of
Remarks Tool Sample Grind Out: 4%-oil; 33%-mud; 63%-water

Time Set Packer(s) 8:48 ~~P.M.~~ A.M. Time Started Off Bottom 11:48 ~~P.M.~~ A.M. Maximum Temperature 102°
Initial Hydrostatic Pressure (A) 1184 P.S.I.
Initial Flow Period Minutes 30 (B) 7 P.S.I. to (C) 39 P.S.I.
Initial Closed In Period Minutes 45 (D) 800 P.S.I.
Final Flow Period Minutes 45 (E) 41 P.S.I. to (F) 79 P.S.I.
Final Closed In Period Minutes 60 (G) 779 P.S.I.
Final Hydrostatic Pressure (H) 1179 P.S.I.



DIAMOND TESTING
 P. O. Box 157
 HOISINGTON, KANSAS 67544
 (800) 542-7313

FLUID SAMPLE DATA

Company Vess Oil Corporation
 Lease & Well No. Blair "A" No. 31
 Date 6-27-05 Sec. 13 Twp. 26 S Range 4 E
 Formation Test No. 1 Interval Tested From 2,390 ft. to 2,399 ft. Total Depth 2,399 ft.
 Formation Arbuckle

	MUD PIT	RECOVERY	RECOVERY
Viscosity	<u>74</u> CP	<u>--</u> CP	
Weight	<u>9.6</u>	<u>--</u>	
Water Loss	<u>11.2</u> CC	<u>--</u> CC	
PH Factor	<u>10.0</u>	<u>--</u>	<u>Water</u> <u>7.0</u>

	RESISTIVITY	CHLORIDE CONTENT
Recovery Water	<u>.14 @ 104 °F.</u>	<u>33,000 ppm</u>
Recovery Mud	<u>-- @ -- °F.</u>	<u>-- ppm</u>
Recovery Mud Filtrate	<u>-- @ -- °F.</u>	<u>-- ppm</u>
Mud Pit Sample	<u>2.00 @ 80 °F.</u>	<u>2,600 ppm</u>
Mud Pit Sample Filtrate	<u>2.40 @ 76 °F.</u>	<u>2,200 ppm</u>

Sample Taken By ROGER D. FRIEDLY

Witness By PAUL RAMONDETTA

Remarks Pit filtrate triton dish chlorides were 1,900 Ppm
Recovery water dish chlorides were 31,000 Ppm

GENERAL INFORMATION

Client Information:

Company: VESS OIL CORPORATION

Contact: BILL HORIGAN

Phone: Fax: e-mail:

Site Information:

Contact: PAUL RAMONDETTA

Phone: Fax: e-mail:

Well Information:

Name: BLOIR A #31

Operator: VESS OIL CORPORATION

Location-Downhole: DST #1 ARBUCKLE 2,390' - 2,399'

Location-Surface: SEC 13-26S-4E BUTLER COUNTY

Test Information:

Company: DIAMOND TESTING

Representative: ROGER D. FRIEDLY

Supervisor: PAUL RAMONDETTA

Test Type: CONVENTIONAL Job Number:

Test Unit: NO. 1

Start Date: 2005/06/27 Start Time: 05:46:00

End Date: 2005/06/27 End Time: 13:58:00

Report Date: Prepared By:

Remarks: Qualified By:

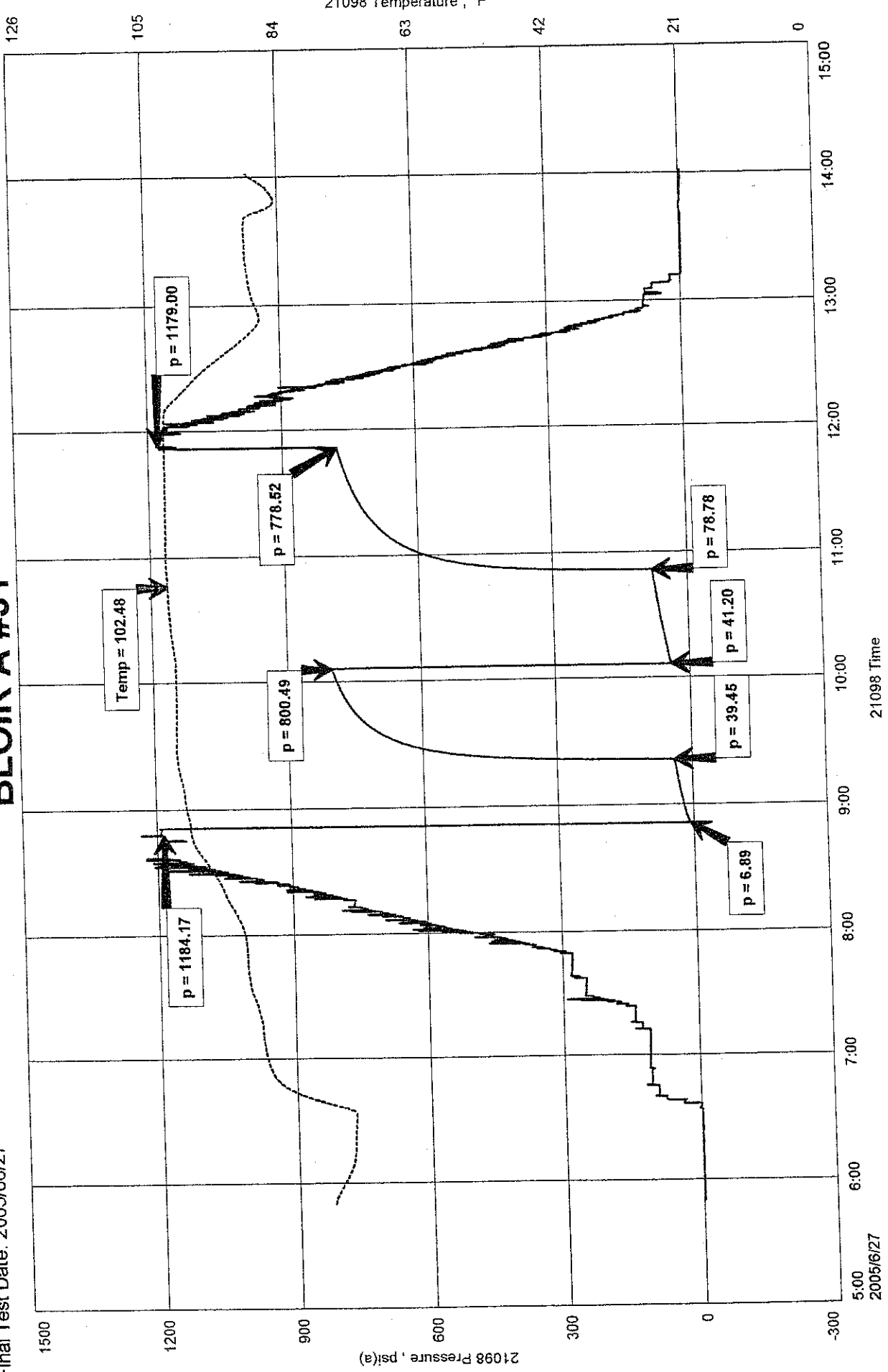
RECOVERED: 36' MW 35%, MUD, 65% WTR - SCUM OF OIL
31' MW 20% MUD, 80% WTR - SCUM OF OIL
93' SW 100% SW - WITH A SCUM OF OIL
160' TOTAL FLUID

TOOL SAMPLE: 4% OIL, 33% MUD, 63% WTR

VESS OIL CORPORATION
 DST #1 ARBUCKLE 2,390' - 2,399'
 Start Test Date: 2005/06/27
 Final Test Date: 2005/06/27

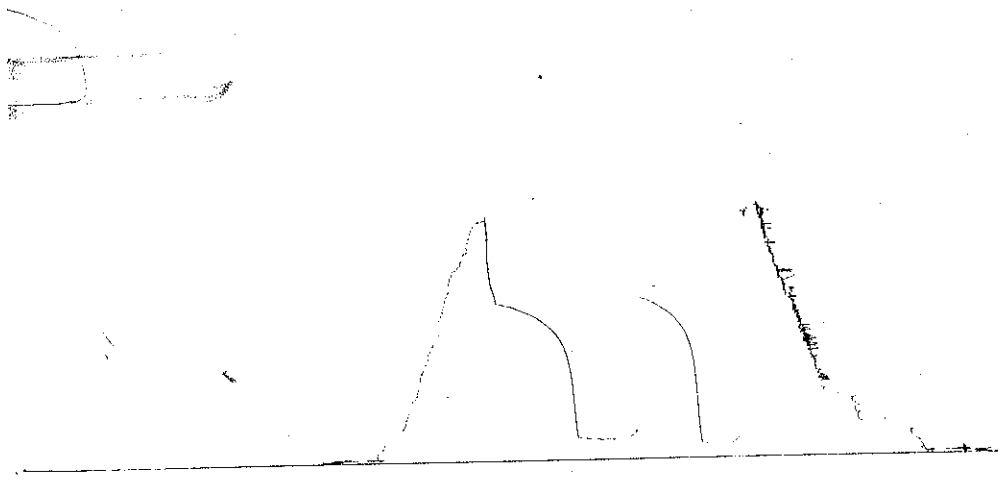
Formation: DST #1 ARBUCKLE 2,390' - 2,399'
 Pool: EL DORADO

BLOIR A #31



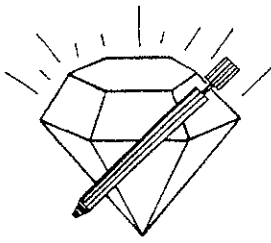
DST # 1 Outside 13387
ARB

2390-2399
LOC 2376



This is an actual photograph of recorder chart.

POINT	PRESSURE		PSI
	Field Reading	Elec. Office Reading	
(A) Initial Hydrostatic Mud	1184	1184	PSI
(B) First Initial Flow Pressure	7	7	PSI
(C) First Final Flow Pressure	39	39	PSI
(D) Initial Closed-in Pressure	800	800	PSI
(E) Second Initial Flow Pressure	41	41	PSI
(F) Second Final Flow Pressure	79	79	PSI
(G) Final Closed-in Pressure	779	779	PSI
(H) Final Hydrostatic Mud	1179	1179	PSI



DIAMOND TESTING

P.O. Box 157
HOISINGTON, KANSAS 67544
(620) 653-7550 • (800) 542-7313
STC 21098.D134

Company Vess Oil Corporation Lease & Well No. Bloir "A" No. 31
Elevation 1375 KB Formation Arbuckle Effective Pay -- Ft. Ticket No. 2023
Date 6-27-05 Sec. 13 Twp. 26S Range 4E County Butler State Kansas
Test Approved By Paul Ramondetta Diamond Representative Roger D. Friedly

Formation Test No. 2 Interval Tested from 2,396 ft. to 2,420 ft. Total Depth 2,420 ft.
Packer Depth 2,391 ft. Size 6 3/4 in. Packer Depth -- ft. Size -- in.
Packer Depth 2,396 ft. Size 6 3/4 in. Packer Depth -- ft. Size -- in.
Depth of Selective Zone Set -- ft.

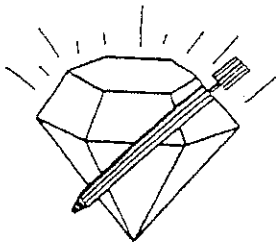
Top Recorder Depth (Inside) 2,384 ft. Recorder Number 21098 Cap. 5,000 psi
Bottom Recorder Depth (Outside) 2,417 ft. Recorder Number 13387 Cap. 4,000 psi
Below Straddle Recorder Depth -- ft. Recorder Number -- Cap. -- psi

Drilling Contractor C & G Drilling Company - Rig 1 Drill Collar Length 186 ft. I.D. 2 1/4 in.
Mud Type Chemical Viscosity 60 Weight Pipe Length -- ft. I.D. -- in.
Weight 9.6 Water Loss 11.2 cc. Drill Pipe Length 2,185 ft. I.D. 3 1/2 in.
Chlorides 2,000 P.P.M. Test Tool Length 25 ft. Tool Size 3 1/2 - IF in.
Jars: Make Bowen Serial Number Not Run Anchor Length 24 ft. Size 4 1/2 - FH in.
Did Well Flow? No Reversed Out No Surface Choke Size 1 in. Bottom Choke Size 5/8 in.
Main Hole Size 7 7/8 in. Tool Joint Size 4 1/2 - XH in.

Blow: 1st Open: Weak, 1/2 in., blow increasing. Off bottom of bucket in 6 mins. No blow back during shut-in.
2nd Open: Weak, 1/8 in., blow increasing. Off bottom of bucket in 9 mins. Weak, 1/2 in., blow back during shut-in.

Recovered 60 ft. of gas in pipe
Recovered 52 ft. of clean oil = .738400 bbls. (Gravity: 33 @ 60°)
Recovered 170 ft. of oil cut muddy water = 2.414000 bbls. (Grind out: 9%-oil; 39%-mud; 52%-water)
Recovered 186 ft. of slightly oil cut muddy water = 2.641200 bbls. (Grind out: 2%-oil; 6%-mud; 92%-water)
Recovered 186 ft. of slightly oil cut muddy water = .915120 bbls. (Grind out: 1%-oil; 2%-mud; 97%-water)
Recovered 594 ft. of TOTAL FLUID = 6.708720 bbls.
Remarks Tool Sample Grind Out: 26%-mud; 34%-oil; 40%-water

Time Set Packer(s) 11:02 ~~XXX~~ P.M. Time Started Off Bottom 2:02 A.M. ~~XXX~~ Maximum Temperature 103°
Initial Hydrostatic Pressure (A) 1183 P.S.I.
Initial Flow Period Minutes 30 (B) 15 P.S.I. to (C) 158 P.S.I.
Initial Closed In Period Minutes 45 (D) 836 P.S.I.
Final Flow Period Minutes 45 (E) 161 P.S.I. to (F) 269 P.S.I.
Final Closed In Period Minutes 60 (G) 821 P.S.I.
Final Hydrostatic Pressure (H) 1170 P.S.I.



DIAMOND TESTING
 P. O. Box 157
 HOISINGTON, KANSAS 67544
 (800) 542-7313

FLUID SAMPLE DATA

Company Vess Oil Corporation

Lease & Well No. Bloir "A" No. 31

Date 6-27-05 Sec. 13 Twp. 26 S Range 4 E

Formation Test No. 2 Interval Tested From 2,396 ft. to 2,420 ft. Total Depth 2,420 ft.

Formation Arbuckle

	MUD PIT	RECOVERY	RECOVERY
Viscosity	<u>60</u> CP	<u>--</u> CP	
Weight	<u>9.6</u>	<u>--</u>	
Water Loss	<u>11.2</u> CC	<u>--</u> CC	
PH Factor	<u>10.0</u>	<u>--</u>	<u>Water</u> <u>7.0</u>

	RESISTIVITY	CHLORIDE CONTENT
Recovery Water	<u>.20 @ 74 °F.</u>	<u>33,000 ppm</u>
Recovery Mud	<u>-- @ -- °F.</u>	<u>-- ppm</u>
Recovery Mud Filtrate	<u>-- @ -- °F.</u>	<u>-- ppm</u>
Mud Pit Sample	<u>1.10 @ 74 °F.</u>	<u>5,200 ppm</u>
Mud Pit Sample Filtrate	<u>1.40 @ 76 °F.</u>	<u>4,000 ppm</u>

Sample Taken By ROGER D. FRIEDLY

Witness By PAUL RAMONDETTA

Remarks Pit filtrate triton dish chlorides were 2,000 Ppm
Recovery water dish chlorides were 27,000 Ppm

GENERAL INFORMATION

Client Information:

Company: VESS OIL CORP
Contact: BILL HORIGAN
Phone: Fax: e-mail:

Site Information:

Contact: PAUL RAMONDETTA
Phone: Fax: e-mail:

Well Information:

Name: BLOIR A #31
Operator: VESS OIL CORP
Location-Downhole: DST #2 ARBUCKLE 2,396' - 2420'
Location-Surface: SEC 13-26S-4E BUTLER COUNTY

Test Information:

Company: DIAMOND TESTING
Representative: ROGER D. FRIEDLY
Supervisor: PAUL RAMONDETTA
Test Type: CONVENTIONAL Job Number:
Test Unit: NO. 1
Start Date: 2005/06/27 Start Time: 20:24:00
End Date: 2005/06/28 End Time: 06:01:00
Report Date: Prepared By:
Remarks: Qualified By:

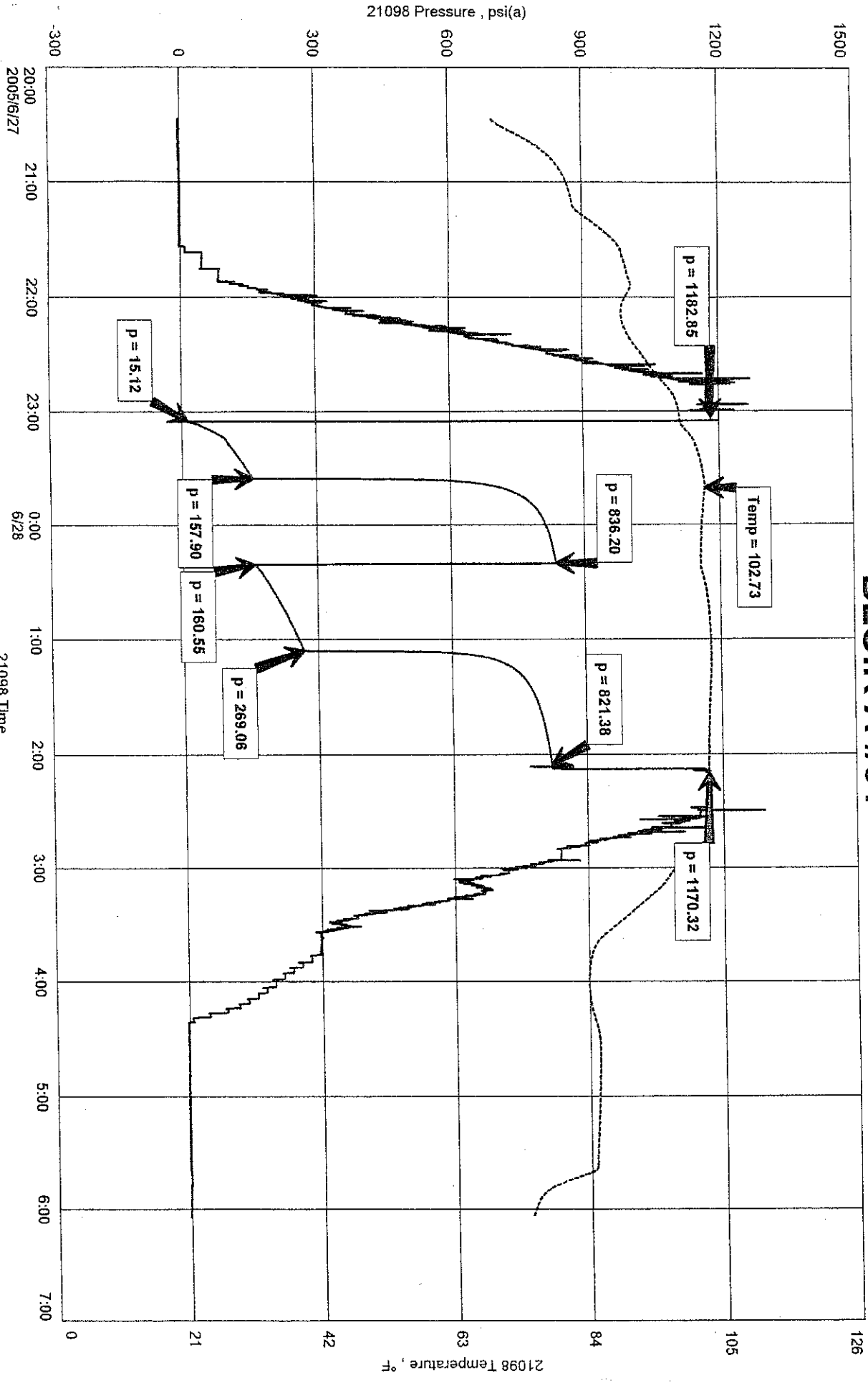
RECOVERED: 60' GAS IN PIPE
52' CLEAN OIL 33 GRAVITY @ 60 deg.
170' OCMW 9% OIL, 39% MUD, 52% WTR
186' SLTOCMW 2% OIL, 6% MUD, 92% WTR
186' SLTOCMW 1% OIL, 2% MUD, 97% WTR
594' TOTAL FLUID

TOOL SAMPLE: 26% MUD, 34% OIL, 40% WTR

WESS OIL CORP
CST #2 ARBUCKLE 2,396' - 2420'
Start Test Date: 2005/06/27
Final Test Date: 2005/06/28

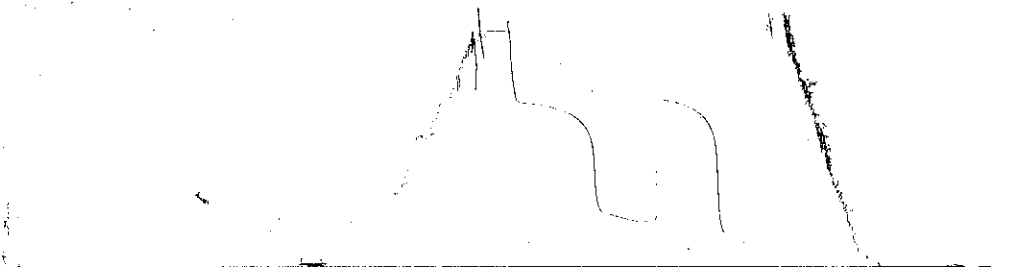
BLOIR A #31
Formation: ARBUCKLE 2,396' - 2,420'
Pool: EL DORADO

BLOIR A #31



DST# 2 outside 13387
ARB

239L - 2420
L6C 2417



This is an actual photograph of recorder chart.

POINT	PRESSURE		PSI
	Field Reading	Elec. Office Reading	
(A) Initial Hydrostatic Mud	1183	1183	PSI
(B) First Initial Flow Pressure	15	15	PSI
(C) First Final Flow Pressure	158	158	PSI
(D) Initial Closed-in Pressure	836	836	PSI
(E) Second Initial Flow Pressure	161	161	PSI
(F) Second Final Flow Pressure	269	269	PSI
(G) Final Closed-in Pressure	821	821	PSI
(H) Final Hydrostatic Mud	1170	1170	PSI