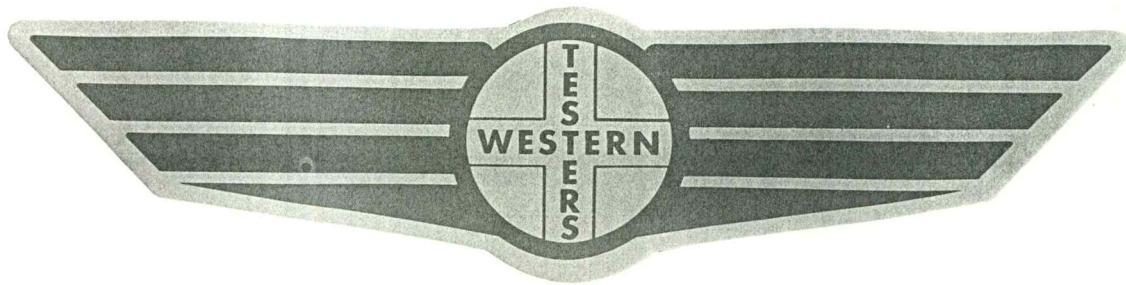


FORMATION TEST REPORT



Home Office:

Wichita, Kansas 67201

P.O. Box 1599

Phone 1-800-688-7021

DST REPORT

GENERAL INFORMATION

DATE : 6/29/94	TICKET : 20322
CUSTOMER : OXY USA, INC.	LEASE : PORTER D
WELL : #91 TEST: 1	GEOLOGIST: KILE
ELEVATION:	FORMATION: SIMPSON
SECTION : 6	TOWNSHIP : 26S
RANGE : 5E COUNTY: BUTLER	STATE : KS
GAUGE SN#: 11018 RANGE : 4425	CLOCK : 12

WELL INFORMATION

PERFORATION INTERVAL FROM:	2440.00 ft	TO:	2475.00 ft	TVD:	2475.0 ft
DEPTH OF SELECTIVE ZONE:				TEST TYPE:	OIL
DEPTH OF RECORDERS:	2448.0 ft		2472.0 ft		
TEMPERATURE:	106.0				
DRILL COLLAR LENGTH:	120.0 ft	I.D.:		2.200 in	
WEIGHT PIPE LENGTH :	0.0 ft	I.D.:		0.000 in	
DRILL PIPE LENGTH :	2300.0 ft	I.D.:		3.800 in	
TEST TOOL LENGTH :	20.0 ft	TOOL SIZE :		5.500 in	
ANCHOR LENGTH :	35.0 ft	ANCHOR SIZE:		5.500 in	
SURFACE CHOKE SIZE :	0.750 in	BOTTOM CHOKE SIZE:		0.750 in	
MAIN HOLE SIZE :	7.875 in	TOOL JOINT SIZE :		4.5XH	
PACKER DEPTH:	2440.0 ft	SIZE:		6.630 in	
PACKER DEPTH:	0.0 ft	SIZE:		0.000 in	
PACKER DEPTH:	0.0 ft	SIZE:		0.000 in	
PACKER DEPTH:	0.0 ft	SIZE:		0.000 in	

MUD INFORMATION

DRILLING CON. : ALLEN RIG 3	VISCOSITY : 44.00 cp
MUD TYPE : CHEMICAL	WATER LOSS: 9.000 cc
WEIGHT : 9.200 ppg	
CHLORIDES : 2000 ppm	SERIAL NUMBER: 12369
JARS-MAKE : WTC	REVERSED OUT?: NO
DID WELL FLOW?: NO	

COMMENTS

Comment

INITIAL FLOW PERIOD WEAK BLOW - DEAD IN 5 MINUTES
 FINAL FLOW PERIOD WEAK BLOW - DEAD IN 5 MINUTES.

DST REPORT (CONTINUED)

FLUID RECOVERY

Feet of Fluid	% Oil	% Gas	% Water	% Mud	Comments
10.0	80.0	0.0	0.0	20.0	FREE OIL W/SOME MUD
0.0	0.0	0.0	0.0	0.0	GRAVITY 36 @ 60 DEGREES F

RATE INFORMATION

OIL VOLUME:	0.0376 STB	TOTAL FLOW TIME:	45.0000 min.
GAS VOLUME:	0.0000 SCF	AVERAGE OIL RATE:	1.5044 STB/D
MUD VOLUME:	0.0094 STB	AVERAGE WATER RATE:	0.0000 STB/D
WATER VOLUME:	0.0000 STB		
TOTAL FLUID :	0.0470 STB		

FIELD TIME & PRESSURE INFORMATION

INITIAL HYDROSTATIC PRESSURE: 1190.00

Description	Duration	p1	p End
INITIAL FLOW	15.00	28.00	30.00
INITIAL SHUT-IN	30.00		816.00
FINAL FLOW	30.00	32.00	33.00
FINAL SHUT-IN	60.00		842.00

FINAL HYDROSTATIC PRESSURE: 1172.00

OFFICE TIME & PRESSURE INFORMATION

INITIAL HYDROSTATIC PRESSURE: 1204.00

Description	Duration	p1	p End
INITIAL FLOW	15.00	40.00	40.00
INITIAL SHUT-IN	30.00		798.00
FINAL FLOW	30.00	40.00	40.00
FINAL SHUT-IN	60.00		847.00

FINAL HYDROSTATIC PRESSURE: 1197.00

PRESSURE TRANSIENT REPORT

GENERAL INFORMATION

DATE : 6/29/94	TICKET : 20322
CUSTOMER : OXY USA, INC.	LEASE : PORTER D
WELL : #91	TEST: 1
ELEVATION:	GEOLOGIST: KILE
SECTION : 6	FORMATION: SIMPSON
RANGE : 5E	TOWNSHIP : 26S
GAUGE SN#: 11018	STATE : KS
COUNTY: BUTLER	CLOCK : 12
RANGE : 4425	

INITIAL FLOW

<u>Time (min)</u>	<u>Pressure</u>	<u>Delta P</u>
0.00	40.00	40.00
5.00	40.00	0.00
10.00	40.00	0.00
15.00	40.00	0.00

INITIAL SHUT IN

<u>Time (min)</u>	<u>Pressure</u>	<u>Delta P</u>	<u>Horner T</u>
3.00	176.00	176.00	6.00
6.00	347.00	171.00	3.50
9.00	512.00	165.00	2.67
12.00	603.00	91.00	2.25
15.00	669.00	66.00	2.00
18.00	711.00	42.00	1.83
21.00	742.00	31.00	1.71
24.00	767.00	25.00	1.63
27.00	788.00	21.00	1.56
30.00	798.00	10.00	1.50

FINAL FLOW

<u>Time (min)</u>	<u>Pressure</u>	<u>Delta P</u>
0.00	40.00	40.00
5.00	40.00	0.00
10.00	40.00	0.00
15.00	40.00	0.00

PRESSURE TRANSIENT REPORT (CONTINUED)

FINAL FLOW (CONTINUED)

<u>Time (min)</u>	<u>Pressure</u>	<u>Delta P</u>
20.00	40.00	0.00
25.00	40.00	0.00
30.00	40.00	0.00

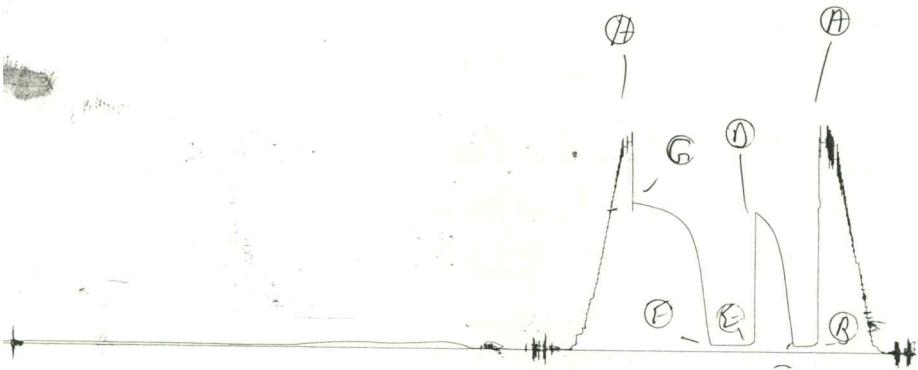
FINAL SHUT IN

<u>Time (min)</u>	<u>Pressure</u>	<u>Delta P</u>	<u>Horner T</u>
3.00	137.00	137.00	11.00
6.00	321.00	184.00	6.00
9.00	484.00	163.00	4.33
12.00	586.00	102.00	3.50
15.00	648.00	62.00	3.00
18.00	698.00	50.00	2.67
21.00	730.00	32.00	2.43
24.00	752.00	22.00	2.25
27.00	770.00	18.00	2.11
30.00	785.00	15.00	2.00
33.00	796.00	11.00	1.91
36.00	808.00	12.00	1.83
39.00	814.00	6.00	1.77
42.00	820.00	6.00	1.71
45.00	825.00	5.00	1.67
48.00	832.00	7.00	1.63
51.00	836.00	4.00	1.59
54.00	841.00	5.00	1.56
57.00	843.00	2.00	1.53
60.00	847.00	4.00	1.50

251 / 1106 / 1100

DKT 20300

I



KT 20322

0

