



**TRILOBITE
TESTING, INC.**

TRANSIENT GAUGE REPORT

JJR **O' bryan #1**
 JJR **Garret #2 Zachariah**
 Box 103 Licence No:
 McLouth, Test Start: 2006.04.13 @ 12:15:33
 ATTN: Paul Atkins

GENERAL INFORMATION:

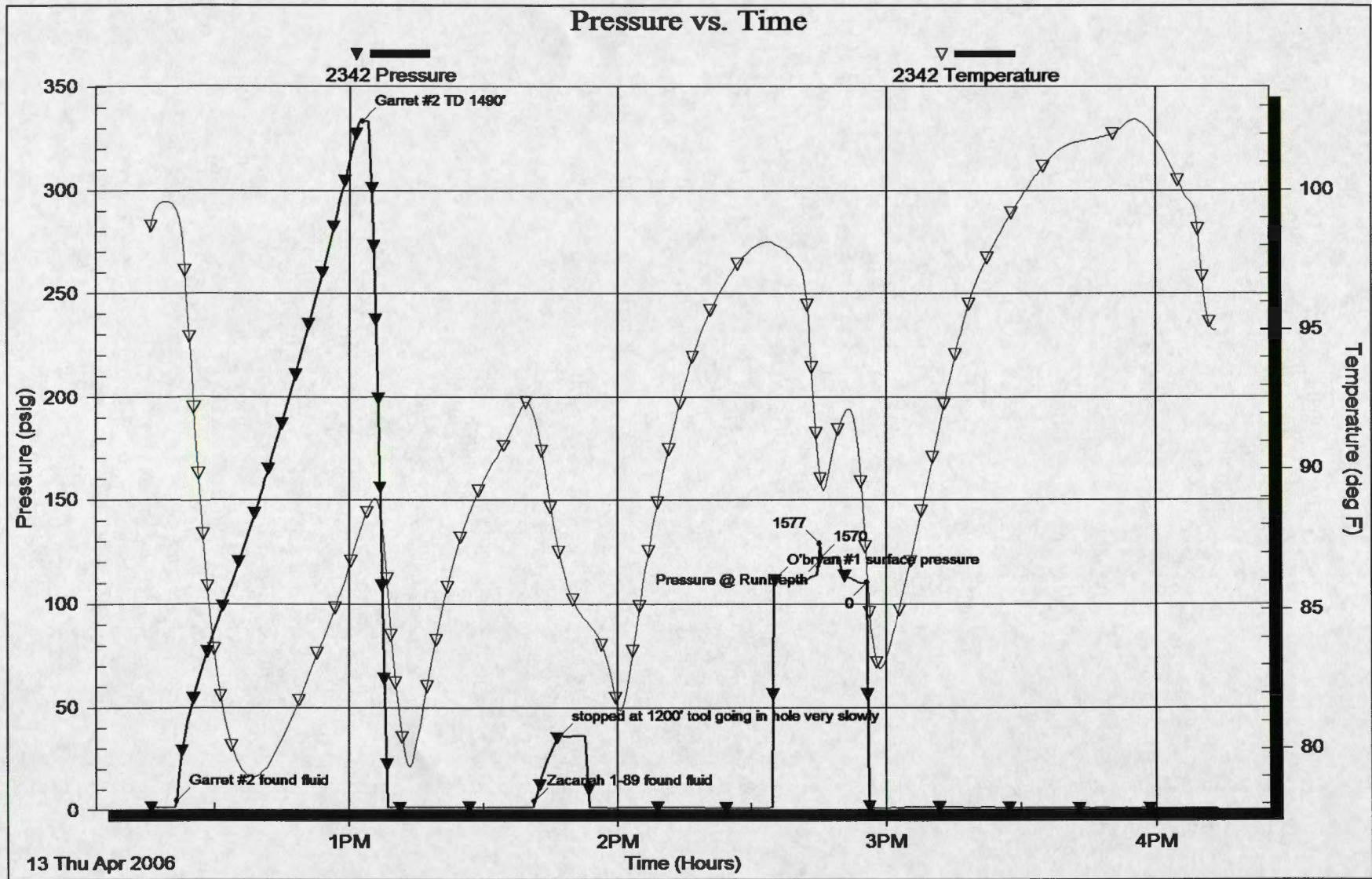
Formation: Field: Company Rep:
 Well Status: Crude Oil Unit No.:
 Deviated: Yes Whipstock: ft (CF) Reference Elevations: ft (KB)
 Shut In Date: ft (CF)
 Perforations: ft (CF) To ft (CF) (TVD) KB to CF: ft
 Tubing Press: Initial psig Final psig inches @ ft (CF) **MPP:** ft (CF)
 Casing Press: Initial psig Final psig inches @ ft (CF) **Press@MPP:** psig
 Open Hole: inches **B.H. Temp:** 89.31 deg F
 Packer Depth: ft (CF) Assumed Gradient: 1 psig/ft

Serial #: 2342
 Press@RunDepth: 121.98 psig @ 1570 ft (CF) Capacity: 7000 psig
 Start Date: 2006.04.13 End Date: 2006.04.13 Last Calib.:
 Start Time: 12:15:33 End Time: 16:13:58 Time On Btm:
 Time Off Btm:

TEST COMMENT:

RESULTS SUMMARY

Relative Time (Hours)	Pressure (psig)	Temperature (deg F)	Annotation
647.00858	4.40	99.21	Garret #2 found fluid
647.00906	333.43	87.92	Garret #2 TD 1490'
647.00950	4.31	91.88	Zacariah 1-89 found fluid
647.00957	35.76	86.97	stopped at 1200' tool going in hole very slowly
647.01013	111.35	98.06	O'bryan #1 surface pressure
647.01025	128.88	89.81	1577
647.01025	122.23	89.43	1570
647.01025	121.98	89.31	Pressure @ RunDepth
647.01037	110.34	86.39	0





**TRILOBITE
TESTING, INC.**

TRANSIENT GAUGE DATA LISTING

JJR

O' bryan #1

JJR
Box 103
McLouth,
ATTN: Paul Atkins

Garret #2 Zachariah

Licence No:

Test Start: 2006.04.13 @ 12:15:33

Serial # 2342

Actual Time (Date/Time)	Relative Time (Hours)	Depth (ft)	Pressure (psig)	Temperature (deg F)	Comments
2006.04.13 @ 12:15:38	0.00139		1.38	98.47	
2006.04.13 @ 12:21:28	0.09861		1.36	99.26	
2006.04.13 @ 12:21:33	0.10000		1.36	99.23	
2006.04.13 @ 12:21:38	0.10139	705.00	4.40	99.21	Garret #2 found fluid
2006.04.13 @ 12:21:43	0.10278		6.41	99.17	
2006.04.13 @ 12:21:48	0.10417		9.10	99.13	
2006.04.13 @ 12:21:53	0.10556		11.36	99.09	
2006.04.13 @ 12:29:08	0.22639		81.95	84.62	
2006.04.13 @ 12:36:23	0.34722		127.02	79.18	
2006.04.13 @ 12:43:38	0.46806		177.88	79.85	
2006.04.13 @ 12:50:53	0.58889		235.03	82.58	
2006.04.13 @ 12:58:08	0.70972		297.89	85.59	
2006.04.13 @ 13:02:33	0.78333		333.90	87.84	
2006.04.13 @ 13:02:38	0.78472		333.65	87.88	
2006.04.13 @ 13:02:43	0.78611	1490.00	333.43	87.92	Garret #2 TD 1490'
2006.04.13 @ 13:02:48	0.78750		333.43	87.97	
2006.04.13 @ 13:02:53	0.78889		333.43	87.97	
2006.04.13 @ 13:02:58	0.79028		333.43	88.05	
2006.04.13 @ 13:10:13	0.91111		1.19	82.62	
2006.04.13 @ 13:17:28	1.03194		1.19	82.30	
2006.04.13 @ 13:24:43	1.15278		1.27	87.46	
2006.04.13 @ 13:31:58	1.27361		1.02	90.16	
2006.04.13 @ 13:39:13	1.39444		1.10	92.40	
2006.04.13 @ 13:41:03	1.42500		1.21	91.96	
2006.04.13 @ 13:41:08	1.42639		1.38	91.92	
2006.04.13 @ 13:41:13	1.42778	1110.00	4.31	91.88	Zacariah 1-89 found fluid
2006.04.13 @ 13:41:18	1.42917		5.47	91.82	
2006.04.13 @ 13:41:23	1.43056		5.47	91.78	
2006.04.13 @ 13:41:28	1.43194		5.47	91.73	
2006.04.13 @ 13:46:38	1.51806		36.04	87.09	
2006.04.13 @ 13:46:43	1.51944		36.04	87.03	
2006.04.13 @ 13:46:48	1.52083	1200.00	35.76	86.97	stopped at 1200' tool going in hole very slowly
2006.04.13 @ 13:46:53	1.52222		35.76	86.91	

Printing every 87 samples

Serial # 2342

Actual Time (Date/Time)	Relative Time (Hours)	Depth (ft)	Pressure (psig)	Temperature (deg F)	Comments
2006.04.13 @ 13:46:58	1.52361		35.76	86.85	
2006.04.13 @ 13:47:03	1.52500		35.76	86.79	
2006.04.13 @ 13:54:18	1.64583		1.27	84.32	
2006.04.13 @ 14:01:33	1.76667		1.19	81.79	
2006.04.13 @ 14:08:48	1.88750		1.27	88.71	
2006.04.13 @ 14:16:03	2.00833		1.19	93.61	
2006.04.13 @ 14:23:18	2.12917		0.87	96.43	
2006.04.13 @ 14:30:33	2.25000		0.94	97.95	
2006.04.13 @ 14:34:53	2.32222		1.02	98.07	
2006.04.13 @ 14:34:58	2.32361		1.02	98.06	
2006.04.13 @ 14:35:03	2.32500	0.00	111.35	98.06	O'bryan #1 surface pressure
2006.04.13 @ 14:35:08	2.32639		111.35	98.05	
2006.04.13 @ 14:35:13	2.32778		111.35	98.04	
2006.04.13 @ 14:35:18	2.32917		111.35	98.04	
2006.04.13 @ 14:42:33	2.45000		112.10	95.58	
2006.04.13 @ 14:45:03	2.49167		115.10	90.05	
2006.04.13 @ 14:45:08	2.49306		122.65	89.92	
2006.04.13 @ 14:45:13	2.49444	1577.00	128.88	89.81	1577
2006.04.13 @ 14:45:18	2.49583		128.97	89.70	
2006.04.13 @ 14:45:23	2.49722		128.97	89.59	
2006.04.13 @ 14:45:28	2.49861		125.59	89.51	
2006.04.13 @ 14:45:33	2.50000	1570.00	122.23	89.43	1570
2006.04.13 @ 14:45:38	2.50139		122.15	89.37	
2006.04.13 @ 14:45:43	2.50278	1570.00	121.98	89.31	Pressure @ RunDepth
2006.04.13 @ 14:45:48	2.50417		122.06	89.27	
2006.04.13 @ 14:53:03	2.62500		111.32	91.55	
2006.04.13 @ 14:55:33	2.66667		110.34	86.80	
2006.04.13 @ 14:55:38	2.66806		110.34	86.59	
2006.04.13 @ 14:55:43	2.66944	0.00	110.34	86.39	0
2006.04.13 @ 14:55:48	2.67083		24.46	86.18	
2006.04.13 @ 14:55:53	2.67222		1.38	85.99	
2006.04.13 @ 14:55:58	2.67361		1.96	85.79	
2006.04.13 @ 15:03:13	2.79444		0.94	85.20	
2006.04.13 @ 15:10:28	2.91528		1.10	90.46	
2006.04.13 @ 15:17:43	3.03611		0.94	95.52	
2006.04.13 @ 15:24:58	3.15694		0.85	98.35	
2006.04.13 @ 15:32:13	3.27778		0.85	100.24	
2006.04.13 @ 15:39:28	3.39861		0.77	101.53	
2006.04.13 @ 15:46:43	3.51944		0.68	101.83	
2006.04.13 @ 15:53:58	3.64028		0.52	102.45	
2006.04.13 @ 16:01:13	3.76111		0.68	101.49	

Printing every 87 samples

Serial # 2342

Actual Time (Date/Time)	Relative Time (Hours)	Depth (ft)	Pressure (psig)	Temperature (deg F)	Comments
2006.04.13 @ 16:08:28	3.88194		0.52	99.43	
2006.04.13 @ 16:13:58	3.97361		0.37	95.04	

Printing every 87 samples

Paul Atkins

Company: **JJR**
 Address: **Box 103 McClouth KS 66059**
 Wellname:

Legal: Sec: Twp: Rge:

Formation: Field/Pool: County: St:

Casing size: Feet of: Wt: Meter run size: SI:

Tubing Size: Feet of: Wt: Orif (in): 95%

TD: Plugged back depth: Packer depth: 90%

Type Test: Tap Type: Gravity: 85%

Type Completion: Producing through: 80%

Date	Clk Tim	Tbg Pres	Csg Pres	Diff	SI temp	Static/Prover	Wat Vol1	Oil Vol	Comment
mm/dd	clock	psi	psi	in of H2O	F	PSI	inch	inch	
	1215								Batten
	1302 - 1490				705		Barrett #2		Barrett #2
	1345	1200			1110	2ac @ grish	1-89		
150 #	1434	opened well				O' Bryan #1			
	1445	1570							

Date	Miles	Name	Date	Miles	Name	Date	Miles	Name
				488 miles				
				600				