

COMPANY O. A. SUTTON AND KEWANEE OIL COMPANY DATE ON 5/15/57 FILE NO. CP-3-807 FC
 WELL INSTITUTE OF LOGOPEDICS NO. 1 DATE OFF 5/18/57 ENGRS. CP-1-2885 WC
 FIELD NORTH WICHITA FORMATION AS NOTED ELEV. 1325' KB
 COUNTY SEDGWICK STATE KANSAS DRLG. FLD. AS NOTED CORES DIAMOND
 LOCATION NE NE SW SEC 3-27S-1E REMARKS SAMPLED AS NOTED

Special Analysis CORE REPORT

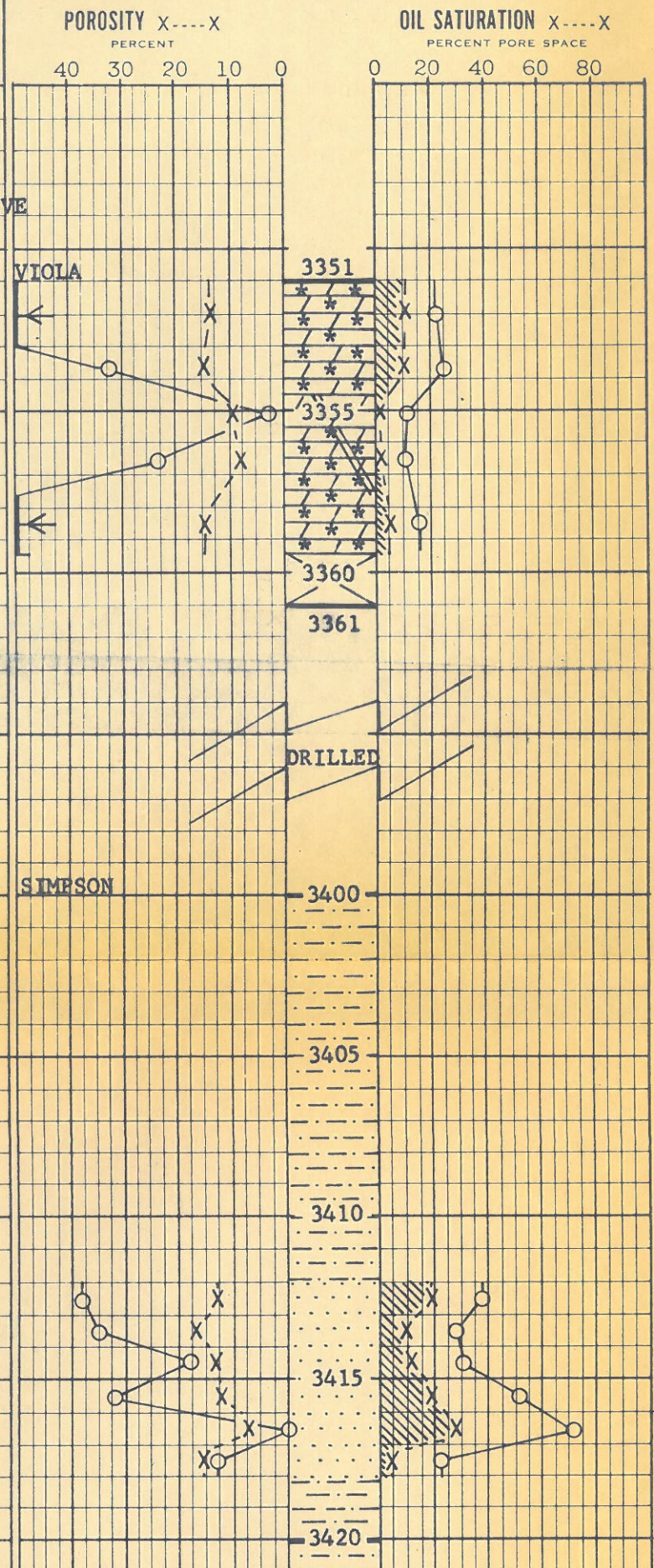
SAND LIMESTONE CONGLOMERATE CHERT
 SHALE DOLOMITE VUGS *** VERTICAL FRACTURES

These analyses, opinions or interpretations are based on observations and material supplied by the client to whom, and for whose exclusive and confidential use, this report is made. The interpretations or opinions expressed represent the best judgment of Core Laboratories, Inc. (all errors and omissions excepted); but Core Laboratories, Inc. and its officers and employees, assume no responsibility and make no warranty or representations as to the productivity, proper operation, or profitability of any oil, gas or other mineral well or sand in connection with which such report is used or relied upon.

PERMEABILITY, Maximum 0-0
MILLIDARCYs
40 30 20 10 0

TOTAL WATER 0-0
PERCENT PORE SPACE
80 60 40 20 0

SAMPLE NUMBER	DEPTH FEET	PERMEABILITY MILLIDARCYs		POROSITY %	RESIDUAL SATURATION % PORE SPACE		CHLORIDE PPM
		MAX.	90°		OIL	TOTAL WATER	
WHOLE-CORE ANALYSIS							
SAMPLED BY CLI ENGINEER AS DIRECTED BY REPRESENTATIVE OF CLIENT.							
WATER BASE MUD W/OIL ADDED							
1	3351.0-53.0	198	198	13.4	10.7	78.3	
2	3353.0-54.5	32	31	13.7	9.7	75.0	
3	3354.5-55.6	2.7	1.4	11.1	1.2	88.1	
4	3355.6-57.7	23	11	8.2	1.8	89.4	
5	3357.7-59.4	1320	1065	14.2	5.0	85.1	
CONVENTIONAL ANALYSIS							
SAMPLED BY REPRESENTATIVE OF CLIENT.							
WATER BASE MUD							
6	3412-13	38		13.2	18.9	62.1	
7	13-14	35		16.9	10.1	72.8	9,500
8	14-15	18		13.1	10.7	69.5	
9	15-16	32		11.6	18.9	49.1	
10	16-17	<0.1		7.0	28.6	28.6	
11	3417-18	13		15.7	5.1	77.7	



12	3430-31	<0.1	5.4	46.3	37.1	
13	31-32	5.6	15.5	23.2	55.4	24,750
14	3432-33	2.2	13.6	28.6	46.3	
15	3436-37	1.3	7.7	26.0	45.5	

