

State Geological Survey
WICHITA, BRANCH

KANSAS DRILLERS LOG

S. 30 T. 27 R. 22 ^E/_W

API No. 15 — 037 — 20,139
County Number

Loc. NW SE NW

County Crawford

Operator
George A. Hoffman

Address
Box 483 Chanute, Kansas

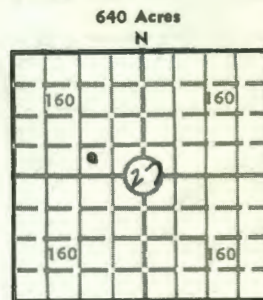
Well No. #H-4 Lease Name Albert Elmer

Footage Location
1200 feet from (N) ~~300~~ line 1200' feet from (E) ~~000~~ line

Principal Contractor Jerry Phillips Geologist

Spud Date September 27, 1974 Total Depth 604 P.B.T.D.

Date Completed Sept. 28, 1974 Oil Purchaser Mid-America



Locate well correctly

Elev.: Gr. _____

DF _____ KB _____

CASING RECORD

Report of all strings set — surface, intermediate, production, etc.

Purpose of string	Size hole drilled	Size casing set (in O.D.)	Weight lbs/ft.	Setting depth	Type cement	Sacks	Type and percent additives
surface	4 3/4"	7"		20'			
casing		2"		596			

LINER RECORD

PERFORATION RECORD

Top, ft.	Bottom, ft.	Sacks cement	Shots per ft.	Size & type	Depth interval

TUBING RECORD		
Size	Setting depth	Packer set at
1"	574'	

ACID, FRACTURE, SHOT, CEMENT SQUEEZE RECORD

Amount and kind of material used	Depth interval treated
15 bags sand - 50 barrel gelled water	584 - 594

INITIAL PRODUCTION

Date of first production <u>Nov. 1, 1974</u>	Producing method (flowing, pumping, gas lift, etc.) <u>pumping</u>			
RATE OF PRODUCTION PER 24 HOURS	Oil <u>4</u> bbls.	Gas <u>0</u> MCF	Water <u>0</u> bbls.	Gas-oil ratio CFPB
Disposition of gas (vented, used on lease or sold)			Producing interval (s)	

INSTRUCTIONS: As provided in KCC Rule 82-2-125, within 90 days after completion of a well, one completed copy of this Drillers Log shall be transmitted to the State Geological Survey of Kansas, 4150 Monroe Street, Wichita, Kansas 67209. Copies of this form are available from the Conservation Division, State Corporation Commission, 3830 So. Meridian (P.O. Box 17027), Wichita, Kansas 66217. Phone AC 316-522-2206. If confidential custody is desired, please note Rule 82-2-125. Drillers Logs will be on open file in the Oil and Gas Division, State Geological Survey of Kansas, Lawrence, Kansas 66044.

Operator
Geo. A. Hoffman

DESIGNATE TYPE OF COMP.: OIL, GAS,
DRY HOLE, SWDW, ETC.:
oil

Well No.
H-4

Lease Name
Albert Elmer

S _____ T _____ R _____ E
W

WELL LOG

Show all important zones of porosity and contents thereof; cored intervals, and all drill-stem tests, including depth interval tested, cushion used, time tool open, flowing and shut-in pressures, and recoveries.

SHOW GEOLOGICAL MARKERS, LOGS RUN,
OR OTHER DESCRIPTIVE INFORMATION.

FORMATION DESCRIPTION, CONTENTS, ETC.	TOP	BOTTOM	NAME	DEPTH
Soil	0	3		
Clay	3	5		
Shale & Broken Lime	5	153		
Broken Lime	153	233		
Shale	233	264		
Lime	264	279		
Shale	279	289		
Lime	289	294		
Shale w/lime breaks	294	581		
Sand - odor of oil	581	584		
Sand - odor	584	590		
Oil Sand	590	594		
Sand - odor	594	596		
Broken Oil Sand	596	604		
Total Depth	604			

USE ADDITIONAL SHEETS, IF NECESSARY, TO COMPLETE WELL RECORD.



Geo. A. Hoffman Signature
Operator Title
Nov. 12, 1974 Date

65665C