

State Geological Survey
WICHITA BRANCH

KANSAS DRILLERS LOG

S. 24 T. 27 R. 25 **E**

API No. 15 — 011 — 20288
County Number

Loc. NW NW NW

County Bourbon

Operator
Kansas Geological Survey

Address
1930 Ave. A - West Campus, Lawrence, Ks.

Well No. BB 27-25-24-1 Lease Name Bourbon County

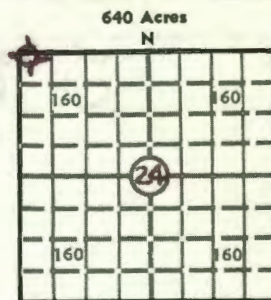
Footage Location
16 feet from (N) line 241 feet from (W) line

Principal Contractor Joy Spradling Rotary Drlg. Geologist Ebanks - Livingston

Spud Date 12-3-76 Total Depth 219' P.B.T.D.

Date Completed 12-29-76 Oil Purchaser none

AUG 0 2 1977



Locate well correctly
Elev.: Gr. 798'

DF _____ KB _____

CASING RECORD

Report of all strings set — surface, intermediate, production, etc.

Purpose of string	Size hole drilled	Size casing set (in O.D.)	Weight lbs/ft.	Setting depth	Type cement	Sacks	Type and percent additives
Surface	7 1/2"	6 5/8	18	56'	Portland	2	none

LINER RECORD

PERFORATION RECORD

Top, ft.	Bottom, ft.	Sacks cement	Shots per ft.	Size & type	Depth interval
none			none		

TUBING RECORD

Size	Setting depth	Packer set at
none		

ACID, FRACTURE, SHOT, CEMENT SQUEEZE RECORD

Amount and kind of material used	Depth interval treated
none	

INITIAL PRODUCTION

Date of first production none Producing method (flowing, pumping, gas lift, etc.)

RATE OF PRODUCTION PER 24 HOURS	Oil	Gas	Water	Gas-oil ratio
	bbls.	MCF	bbls.	CFPB

Disposition of gas (vented, used on lease or sold) Producing interval (s)

INSTRUCTIONS: As provided in KCC Rule 82-2-125, within 90 days after completion of a well, one completed copy of this Drillers Log shall be transmitted to the State Geological Survey of Kansas, 4150 Monroe Street, Wichita, Kansas 67209. Copies of this form are available from the Conservation Division, State Corporation Commission, 3830 So. Meridian (P.O. Box 17027), Wichita, Kansas 66217. Phone AC 316-522-2206. If confidential custody is desired, please note Rule 82-2-125. Drillers Logs will be on open file in the Oil and Gas Division, State Geological Survey of Kansas, Lawrence, Kansas 66044.

Operator
 Kansas Geological Survey

DESIGNATE TYPE OF COMP.: OIL, GAS,
 DRY HOLE, SWDW, ETC.:
 Stratigraphic

Well No. Lease Name
 BB-~~D~~-27-25-24-1 Bourbon County

S 24 T 27 R 25 ^E~~X~~

WELL LOG

Show all important zones of porosity and contents thereof; cored intervals, and all drill-stem tests, including depth interval tested, cushion used, time tool open, flowing and shut-in pressures, and recoveries.

SHOW GEOLOGICAL MARKERS, LOGS RUN, OR OTHER DESCRIPTIVE INFORMATION.

FORMATION DESCRIPTION, CONTENTS, ETC.	TOP	BOTTOM	NAME	DEPTH
0- 40' Alluvium				
40- 43' Shale, grey				
43- 50' Limestone				
50- 68' Shale, dark grey, silty				
68- 79' Siltstone, sandy, trace of dead oil stain				
79- 86' Shale, grey, silty				
86- 87' Limestone				
87-101' Sandstone, wilty, dead oil stain				
101-115' Siltstone, shaley				
115-124' Shale, grey				
124-130' Sandstone, shaley				
130-141' Shale, grey				
141-164' Sandstone, trace of dead oil				
164-165' Coal				
165-182' Shale, dark grey				
182-184' Coal				
184-203' Shale, dark grey				
203-214' Sandstone, trace of dead oil				
214-215' Coal				
215-218' Shale, dark grey				
218-219' Chert				
T.D. 219'				

USE ADDITIONAL SHEETS, IF NECESSARY, TO COMPLETE WELL RECORD.

Date Received	<i>H. J. Banks, Jr.</i>
	Signature
	Research Associate
	Title
	2-2-77
	Date

50965