

WELL LOG BUREAU - KANSAS GEOLOGICAL SOCIETY  
412 Union National Bank Bldg, Wichita, Kansas.

REX & MORRIS.  
Loomis No. 1

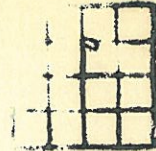
SEC. 21 T. 27 R. 4E.  
C W  $\frac{1}{2}$  NE  $\frac{1}{2}$

County Butler.

Total Depth. 2002.  
Comm. 3-20-35 Comp. 4-30-35  
Shot or Treated. 1000 gal.  
Contractor. Rex and Morris.  
Issued. 3-20-37

CASING.

12  $\frac{1}{2}$ " 45'  
10" 665'  
8" 1363'  
6" 1925'  
UR 1940'



Elevation.

Production. 40 B.

Figures Indicate Bottom of Formations.

soil	35	lime	845	show free oil	
gravel	40	shale sdy	890	lime grey 2 $\frac{1}{2}$ BWP H	1936
LBWPH 40'		lime	900	lime brownish grey med	
shale	50	shale	910	hard	1963
lime	85	lime	935	lime grey hard	1972
shale	90	shale	1000	lime brownish grey	
red rock	100	lime	1040	hard	1975
lime	105	sand	1050	lime soft brown	1985
shale	110	1 BWP H 1045		show free oil	1985
lime	125	shale	1060	lime brownish grey	
shale	130	lime	1085	hard	1988
lime	145	2 BWP H 1070		lime grey and shale	
shale	150	shale	1100	blk	1993
lime	155	lime	1170	lime brown porous	
shale	165	1 BWP H 1115		and grey	1998
red rock	170	shale	1175	Free oil	1993-98
shale	195	lime	1185	lime bluish grey hard	1999
lime shells	215	lime shells	1210	lime soft brown	2002
lime	270	lime	1215	Total Depth.	
5 BWP H 230		sand	1230		
shale	275	Gas & HFW 1230			
lime	305	lime	1260		
shale	320	shale	1325		
lime	330	lime	1359		
shale	345	shale	1363		
lime	380	lime	1370		
lime shells	400	shale	1380		
shale	452	lime	1385		
lime	465	shale	1400		
hole making 8 BWP H		lime	1403		
shale	510	shale	1425		
red rock	515	lime sdy Gas 1430	1455		
shale	530	shale	1520		
lime shells	535	lime	1535		
shale	590	shale	1552		
lime	595	lime	1580		
2 BWP H 590		shale	1603		
shale	620	lime	1755		
sand	625	show free oil	1636-45		
HFW 625		2 BWP H 1670-75			
shale	665	4 $\frac{1}{2}$ BWP H 1725'			
lime	675	shale	1902		
shale	680	lime coarse dk grey	1908		
lime	720	lime fine lght grey	1920		
shale	740	shale	1921		
lime	745	lime coarse brwn gray	1925		
shale	760	lime brownish grey med			
lime	790	hard	1929		
shale	840	lime brownish grey med			
		hard	1931 $\frac{1}{2}$		