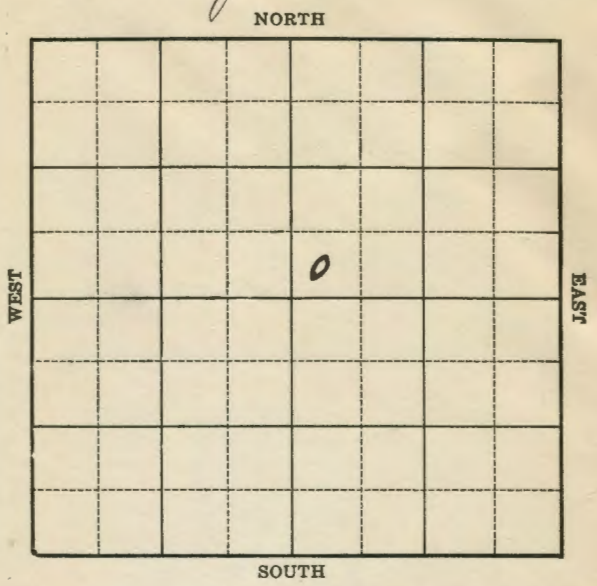


Map No. 20 Sec. 28 Twp. 1E
Well No. #3 Brown Farm
Dickey Oil Company

Sidgwick

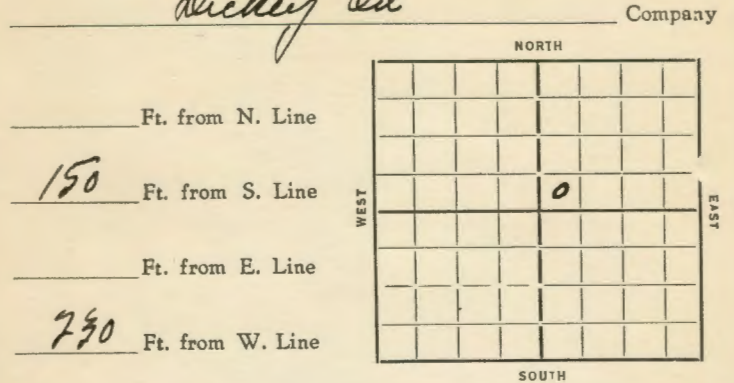


Location _____
Drilling Remarks _____
Rig Up _____
Drilling Remarks _____

RECORD **PRODUCTION**
Cased _____ in. _____ ft. 1st 24 hrs. Nat. _____
Sand _____ 1st 24 hrs. after shot _____
Gas _____ Gas _____ cu. ft. _____
Oil _____ Dry Hole _____
Total Depth _____ Abandoned _____

Map No. _____ Sec. 20 Twp. 28 R. 1E
Well No. #3 Brown Farm
Dickey Oil Company

Sidgwick



Date 1935 **REPORT**
2/13 Relg. Rig
2/21 Rig
2/28 Relg 1130 10" 87
3/7 Chat 3080 6" 3083 Rnet 3088
3/14 Pay 3083 T 7 3121 HFO 1000
3/20 Chat 3080 T 7 3121
1000 acid 882 Allo.

COMPLETED

KANSAS

Map No. 12 Sec. 20 Twp. 28 R. 1E

Well No. 3-Brown
Dickey Oil Company

Contractor

COMPLETED

SECTION PLAT

Ft. from N. Line
150 Ft. from S. Line
Ft. from E. Line
230 Ft. from W. Line

		0	

Location

RECORD

Cased in, ft.
Sand Chat 3080
Gas
Oil
Total Depth 3121

PRODUCTION

1st 24 hrs. Nat.
1st 24 hrs. after shot
Gas Cu. Ft.
Dry Hole
Abandoned

Date

3-20-35 192 ORVAL MANN SCHRECK Scout

882
Hh

Drilling and Remarks:
1000 acid

Map No. 12 Sec. 20 Twp. 28 R. 1E

Well No. 3-Brown
Dickey Oil Company

Contractor

FIRST REPORTS

SECTION PLAT

Ft. from N. Line
150 Ft. from S. Line
Ft. from E. Line
230 Ft. from W. Line

		0	

KANSAS

Location

RECORD

Cased in, ft.
Sand
Gas
Oil
Total Depth

PRODUCTION

1st 24 hrs. Nat.
1st 24 hrs. after shot
Gas Cu. Ft.
Dry Hole
Abandoned

Date

2-13-35 192 ORVAL MANN SCHRECK Scout

Bed of Rig