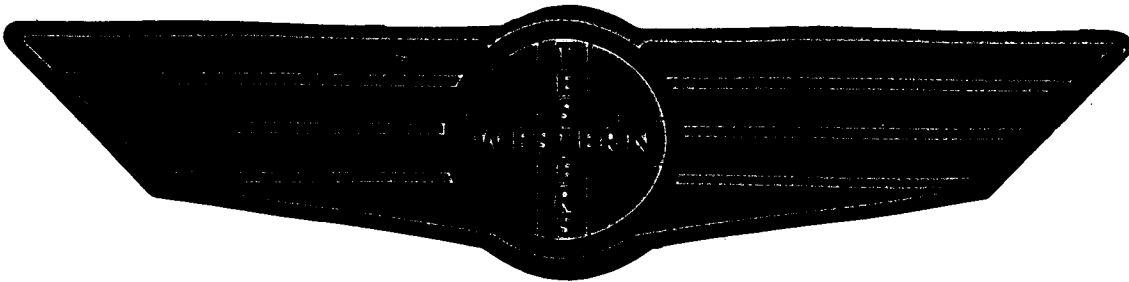


# FORMATION TEST REPORT



Home Office:

P.O. Box 1599

Wichita, Kansas 67201

Phone **1 - 800 - 688 - 7021**

COMPANY RANGE OIL COMPANY, INC. LEASE & WELL NO. KANADY #1 SEC. 1 TWP. 28S RGE. 7E TEST NO. 1 DATE 4/2/91

WESTERN TESTING CO. INC.  
SUBSURFACE PRESSURE SURVEY

DATE : 4-2-91 TICKET : 16912  
CUSTOMER : RANGE OIL COMPANY INC. LEASE : KANADY  
WELL : 1 TEST: 1 GEOLOGIST : T. BLAIR  
ELEVATION : 1554 KB FORMATION : MISSISSIPPIAN  
SECTION : 1 TOWNSHIP : 28S  
RANGE : 7E COUNTY : BUTLER STATE : KANSAS  
GAUGE SN# : 10979 RANGE : 4100 CLOCK : 12

INTERVAL FROM : 2816 TO : 2857 TOTAL DEPTH : 2857  
DEPTH OF SELECTIVE ZONE :  
PACKER DEPTH : 2816 SIZE : 6.63  
PACKER DEPTH : 2811 SIZE : 6.63  
PACKER DEPTH : SIZE :  
PACKER DEPTH : SIZE :

DRILLING CON. : RED TIGER RIG 3  
MUD TYPE : CHEMICAL VISCOSITY : 39  
WEIGHT : 9.8 WATER LOSS (CC) : 8.4  
CHLORIDES (PPM) : 1300  
JARS-MAKE : SERIAL NUMBER :  
DID WELL FLOW ? : NO REVERSED OUT ? : NO

DRILL COLLAR LENGTH : 0 FT I.D. inch : 0.00  
WEIGHT PIPE LENGTH : 600 FT I.D. inch : 2.80  
DRILL PIPE LENGTH : 2196 FT I.D. inch : 3.80  
TEST TOOL LENGTH : 20 FT TOOL SIZE : 5.50  
ANCHOR LENGTH : 41 FT ANCHOR SIZE : 5.50  
SURFACE CHOKE SIZE : .75 IN BOTTOM CHOKE SIZE : .75  
MAIN HOLE SIZE : 7.875 IN TOOL JOINT SIZE : 4.5XH

BLOW COMMENT #1 : INITIAL FLOW PERIOD WEAK BLOW-DEAD IN 27 MINUTES.  
BLOW COMMENT #2 : FINAL FLOW PERIOD NO BLOW.  
BLOW COMMENT #3 :  
BLOW COMMENT #4 :

RECOVERED : 5 FT OF: DRILLING MUD

Total Barrels Fluid = 0.04  
Total Fluid Prod Rate = 0.91 BFPD  
Indicated Wtr Rate = 0.09 BWPD

REMARK 1 :  
REMARK 2 :  
REMARK 3 :  
REMARK 4 :

SET PACKER(S) :	9:00 A.M.	TIME STARTED OFF BOTTOM :	11:00 A.M.
WELL TEMPERATURE :	106		
INITIAL HYDROSTATIC PRESSURE		(A)	1463
INITIAL FLOW PERIOD MIN:	30	(B)	46 PSI TO (C) : 46
INITIAL CLOSED IN PERIOD MIN:	30	(D)	356
FINAL FLOW PERIOD MIN:	30	(E)	45 PSI TO (F) : 45
FINAL CLOSED IN PERIOD MIN:	30	(G)	230
FINAL HYDROSTATIC PRESSURE		(H)	1463

WESTERN TESTING CO. INC.  
WICHITA-KANSAS

Pressure Transient Report  
-----

COMPANY : RANGE OIL COMPANY INC.  
RIG : BUTLER-KANSAS  
FIELD : KANADY  
WELL : 1  
DATE : 4-2-91  
GAUGE NO : 10979

OPERATIONAL COMMENTS

---

COMPANY : RANGE OIL COMPANY INC.  
WELL : 1  
GAUGE # : 10979  
DATE : 2/ 4/91

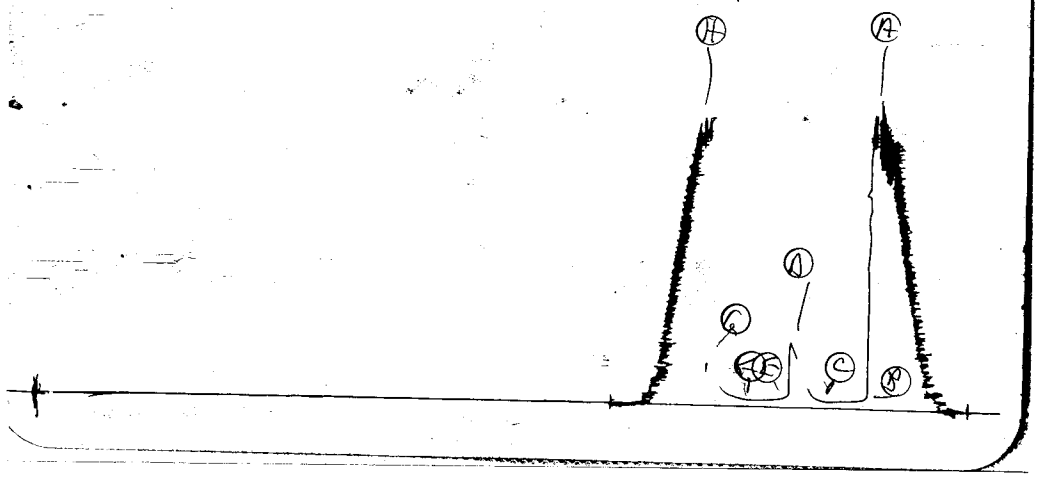
FIELD : KANADY  
JOB # : 16912  
DEPTH : 2857  
TEST :

DATA No.	REAL TIME HR:MN:SS	ELAPSE TIME DELTA HOURS	PRESSURE PSIG	TEMP DEG F	DELTA P Pi-P(i-1)
INITIAL FLOW PERIOD					
2	9: 0: 0	0.000	46.000	106.00	0.000
3	9: 4:59	0.083	46.000	106.00	0.000
4	9:10: 0	0.167	46.000	106.00	0.000
5	9:15: 0	0.250	46.000	106.00	0.000
6	9:19:59	0.333	46.000	106.00	0.000
7	9:25: 0	0.417	46.000	106.00	0.000
8	9:30: 0	0.500	46.000	106.00	0.000
INITIAL SHUT-IN PERIOD					
9	9:33: 0	0.550	46.000	106.00	0.000
10	9:36: 0	0.600	52.000	106.00	6.000
11	9:39: 0	0.650	59.000	106.00	7.000
12	9:42: 0	0.700	79.000	106.00	20.000
13	9:45: 0	0.750	115.000	106.00	36.000
14	9:48: 0	0.800	162.000	106.00	47.000
15	9:51: 0	0.850	212.000	106.00	50.000
16	9:54: 0	0.900	263.000	106.00	51.000
17	9:57: 0	0.950	314.000	106.00	51.000
18	10: 0: 0	1.000	356.000	106.00	42.000
FINAL FLOW PERIOD					
19	10: 1: 0	1.017	45.000	106.00	-311.000
20	10: 4:59	1.083	45.000	106.00	0.000
21	10:10: 0	1.167	45.000	106.00	0.000
22	10:15: 0	1.250	45.000	106.00	0.000
23	10:19:59	1.333	45.000	106.00	0.000
24	10:25: 0	1.417	45.000	106.00	0.000
25	10:30: 0	1.500	45.000	106.00	0.000
FINAL SHUT-IN PERIOD					
26	10:33: 0	1.550	47.000	106.00	2.000
27	10:36: 0	1.600	52.000	106.00	5.000
28	10:39: 0	1.650	58.000	106.00	6.000
29	10:42: 0	1.700	64.000	106.00	6.000
30	10:45: 0	1.750	72.000	106.00	8.000
31	10:48: 0	1.800	87.000	106.00	15.000
32	10:51: 0	1.850	114.000	106.00	27.000
33	10:54: 0	1.900	151.000	106.00	37.000
34	10:57: 0	1.950	192.000	106.00	41.000
35	11: 0: 0	2.000	230.000	106.00	38.000

WESTERN TESTING CO. INC.

10479

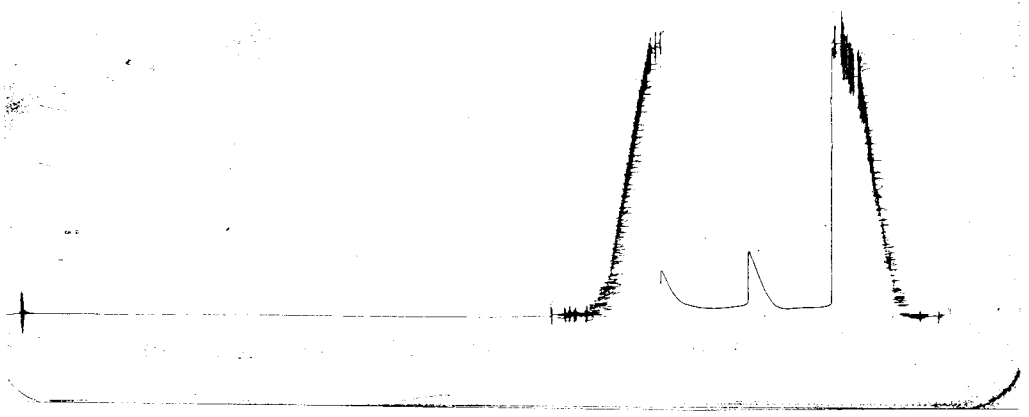
KT 16912  
I



Inside Recorder

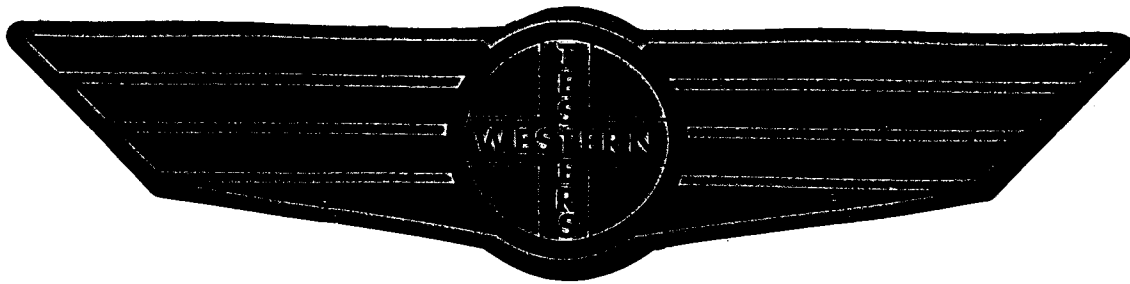
3554

KT 16912  
①



Outside Recorder

# FORMATION TEST REPORT



Home Office:

Wichita, Kansas 67201

P.O. Box 1599

Phone 1 - 800-688-7021

COMPANY RANGE OIL COMPANY, INC. LEASE & WELL NO. KANADY A #1 SEC. 6 TWP. 28S RGE. 8E TEST NO. 2 DATE 4/12/91

WESTERN TESTING CO. INC.  
SUBSURFACE PRESSURE SURVEY

DATE : 4/12/91 TICKET : 16970  
CUSTOMER : RANGE OIL COMPANY INC. LEASE : KANADY A  
WELL : 1 TEST: 2 GEOLOGIST : LAUER  
ELEVATION : 1512 GL FORMATION : MISSISSIPPI  
SECTION : 6 TOWNSHIP : 28S  
RANGE : 8E COUNTY : BUTLER STATE : KANSAS  
GAUGE SN# : 1051 RANGE : 4250 CLOCK : 12

INTERVAL FROM : 2738 TO : 2749 TOTAL DEPTH : 2749  
DEPTH OF SELECTIVE ZONE :  
PACKER DEPTH : 2733 SIZE : 6.63  
PACKER DEPTH : 2738 SIZE : 6.63  
PACKER DEPTH : SIZE :  
PACKER DEPTH : SIZE :

DRILLING CON. : RED TIGER  
MUD TYPE : CHEMICAL VISCOSITY : 43  
WEIGHT : 9.7 WATER LOSS (CC) : 12.0  
CHLORIDES (PPM) : 1200  
JARS-MAKE : NO SERIAL NUMBER :  
DID WELL FLOW ? : NO REVERSED OUT ? : NO

DRILL COLLAR LENGTH : 0 FT I.D. inch : 0.00  
WEIGHT PIPE LENGTH : 628 FT I.D. inch : 2.70  
DRILL PIPE LENGTH : 2090 FT I.D. inch : 3.80  
TEST TOOL LENGTH : 20 FT TOOL SIZE : 5.50  
ANCHOR LENGTH : 11 FT ANCHOR SIZE : 5.50  
SURFACE CHOKE SIZE : .75 IN BOTTOM CHOKE SIZE : .75  
MAIN HOLE SIZE : 7.875 IN TOOL JOINT SIZE : 4.5 XH

BLOW COMMENT #1 : INITIAL FLOW PERIOD WEAK 1 INCH BLOW-  
BLOW COMMENT #2 : DEPLEATING TO 1/4 INCH. FINAL FLOW  
BLOW COMMENT #3 : PERIOD VERY WEAK BLOW-DIED IN 15  
BLOW COMMENT #4 : MINUTES.

RECOVERED : 20 FT OF: MUD

Total Barrels Fluid = 0.14  
Total Fluid Prod Rate = 3.40 BFPD  
Indicated Wtr Rate = 0.34 BWPD

REMARK 1 :  
REMARK 2 : SLID TOOL 5 FT TO BOTTOM  
REMARK 3 :  
REMARK 4 :

SET PACKER(S) :	2:45 AM	TIME STARTED OFF BOTTOM :	5:15 AM
WELL TEMPERATURE :	102		
INITIAL HYDROSTATIC PRESSURE		(A)	1390
INITIAL FLOW PERIOD MIN:	30	(B)	97 PSI TO (C) : 91
INITIAL CLOSED IN PERIOD MIN:	30	(D)	91
FINAL FLOW PERIOD MIN:	30	(E)	91 PSI TO (F) : 91
FINAL CLOSED IN PERIOD MIN:	57	(G)	663
FINAL HYDROSTATIC PRESSURE		(H)	1390

WESTERN TESTING CO. INC.  
WICHITA-KANSAS

Pressure Transient Report  
-----

COMPANY : RANGE OIL COMPANY INC.  
RIG : BUTLER-KANSAS  
FIELD : KANADY A  
WELL : 1  
DATE : 4/12/91  
GAUGE NO : 1051

OPERATIONAL COMMENTS

SLID TOOL 5 FT TO BOTTOM

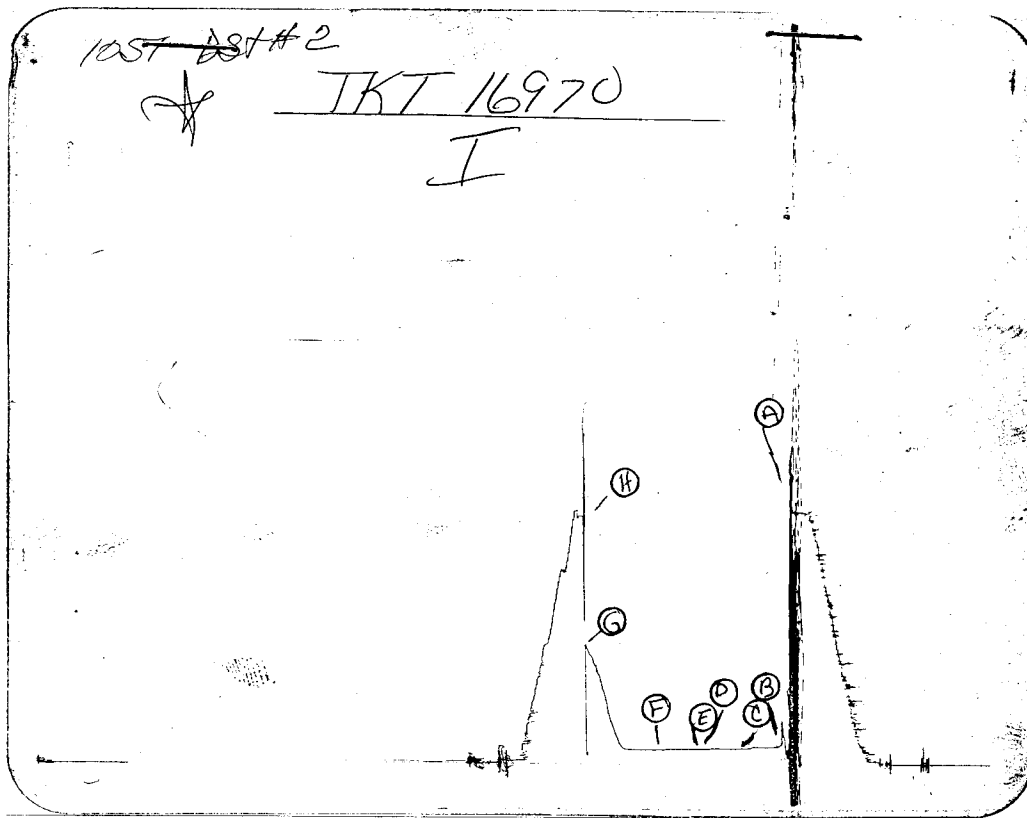
---

COMPANY : RANGE OIL COMPANY INC.  
 WELL : 1  
 GAUGE # : 1051  
 DATE : 12/ 4/91

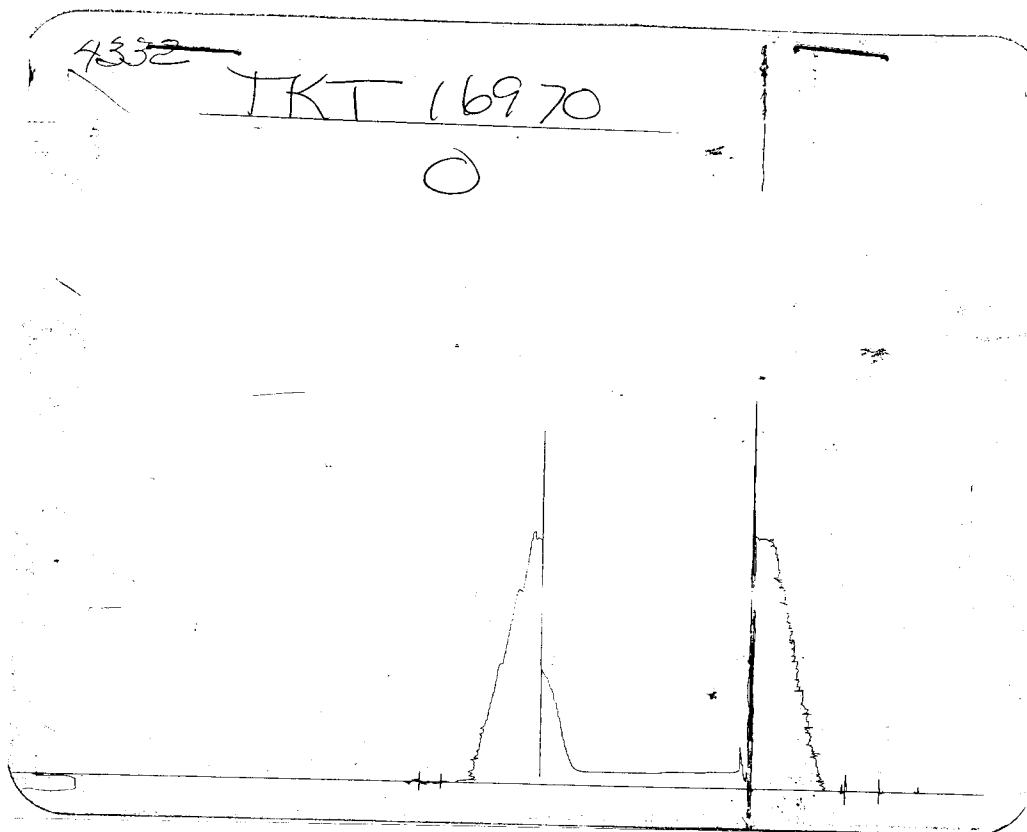
FIELD : KANADY A  
 JOB # : 16970  
 DEPTH : 2749  
 TEST :

DATA No.	REAL TIME HR:MN:SS	ELAPSE TIME DELTA HOURS	PRESSURE PSIG	TEMP DEG F	DELTA P Pi-P(i-1)
INITIAL FLOW PERIOD					
2	2:45: 0	0.000	97.000	102.00	0.000
3	2:49:59	0.083	97.000	102.00	0.000
4	2:55: 0	0.167	97.000	102.00	0.000
5	3: 0: 0	0.250	97.000	102.00	0.000
6	3: 4:59	0.333	97.000	102.00	0.000
7	3:10: 0	0.417	91.000	102.00	-6.000
8	3:15: 0	0.500	91.000	102.00	0.000
INITIAL SHUT-IN PERIOD					
9	3:18: 0	0.550	91.000	102.00	0.000
10	3:21: 0	0.600	91.000	102.00	0.000
11	3:24: 0	0.650	91.000	102.00	0.000
12	3:27: 0	0.700	91.000	102.00	0.000
13	3:30: 0	0.750	91.000	102.00	0.000
14	3:33: 0	0.800	91.000	102.00	0.000
15	3:36: 0	0.850	91.000	102.00	0.000
16	3:39: 0	0.900	91.000	102.00	0.000
17	3:42: 0	0.950	91.000	102.00	0.000
18	3:45: 0	1.000	91.000	102.00	0.000
FINAL FLOW PERIOD					
19	3:46: 0	1.017	91.000	102.00	0.000
20	3:49:59	1.083	91.000	102.00	0.000
21	3:55: 0	1.167	91.000	102.00	0.000
22	4: 0: 0	1.250	91.000	102.00	0.000
23	4: 4:59	1.333	91.000	102.00	0.000
24	4:10: 0	1.417	91.000	102.00	0.000
25	4:15: 0	1.500	91.000	102.00	0.000
FINAL SHUT-IN PERIOD					
26	4:18: 0	1.550	91.000	102.00	0.000
27	4:21: 0	1.600	91.000	102.00	0.000
28	4:24: 0	1.650	91.000	102.00	0.000
29	4:27: 0	1.700	91.000	102.00	0.000
30	4:30: 0	1.750	91.000	102.00	0.000
31	4:33: 0	1.800	91.000	102.00	0.000
32	4:36: 0	1.850	91.000	102.00	0.000
33	4:39: 0	1.900	91.000	102.00	0.000
34	4:42: 0	1.950	91.000	102.00	0.000
35	4:45: 0	2.000	104.000	102.00	13.000
36	4:48: 0	2.050	152.000	102.00	48.000
37	4:51: 0	2.100	212.000	102.00	60.000
38	4:54: 0	2.150	277.000	102.00	65.000
39	4:57: 0	2.200	375.000	102.00	98.000
40	5: 0: 0	2.250	446.000	102.00	71.000
41	5: 3: 0	2.300	506.000	102.00	60.000
42	5: 6: 0	2.350	562.000	102.00	56.000
43	5: 9: 0	2.400	603.000	102.00	41.000
44	5:12: 0	2.450	663.000	102.00	60.000

WESTERN TESTING CO. INC.

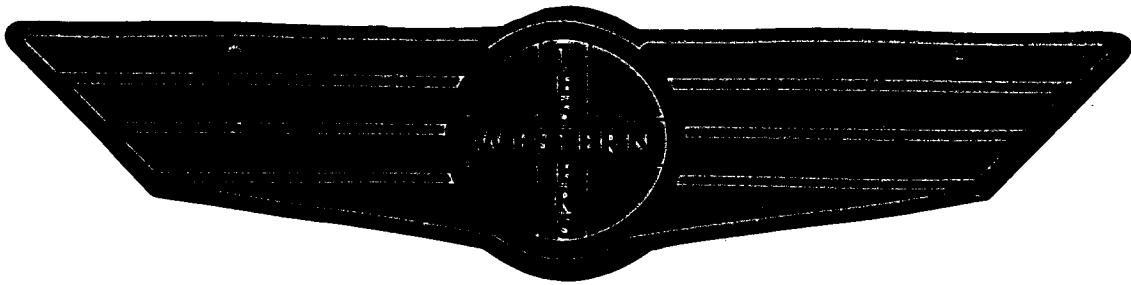


Inside Recorder



Outside Recorder

# FORMATION TEST REPORT



Home Office:

Wichita, Kansas 67201

P.O. Box 1599

Phone **1 - 800-688-7021**

COMPANY RANGE OIL COMPANY, INC. LEASE & WELL NO. KANADY A #1 SEC. 6 TWP. 28S RGE. 8E TEST NO. 3 DATE 4/13/91

WESTERN TESTING CO. INC.  
SUBSURFACE PRESSURE SURVEY

DATE : 4/13/91 TICKET : 16971  
CUSTOMER : RANGE OIL COMPANY INC. LEASE : KANADY A  
WELL : 1 TEST: 3 GEOLOGIST : LAUER  
ELEVATION : 1512 GL FORMATION : SIMPSON  
SECTION : 6 TOWNSHIP : 28S  
RANGE : 8E COUNTY : BUTLER STATE : KANSAS  
GAUGE SN# : 1051 RANGE : 4250 CLOCK : 12

INTERVAL FROM : 3086 TO : 3160 TOTAL DEPTH : 3160  
DEPTH OF SELECTIVE ZONE :  
PACKER DEPTH : 3081 SIZE : 6.63  
PACKER DEPTH : 3086 SIZE : 6.63  
PACKER DEPTH : SIZE :  
PACKER DEPTH : SIZE :

DRILLING CON. : RED TIGER RIG 3  
MUD TYPE : CHEMICAL VISCOSITY : 42  
WEIGHT : 9.8 WATER LOSS (CC) : 11.2  
CHLORIDES (PPM) : 1400  
JARS-MAKE : SERIAL NUMBER :  
DID WELL FLOW ? : NO REVERSED OUT ? : NO

DRILL COLLAR LENGTH : 0 FT I.D. inch : 0.00  
WEIGHT PIPE LENGTH : 628 FT I.D. inch : 2.70  
DRILL PIPE LENGTH : 2438 FT I.D. inch : 3.80  
TEST TOOL LENGTH : 20 FT TOOL SIZE : 5.50  
ANCHOR LENGTH : 74 FT ANCHOR SIZE : 5.50  
SURFACE CHOKE SIZE : .75 IN BOTTOM CHOKE SIZE : .75  
MAIN HOLE SIZE : 7.875 IN TOOL JOINT SIZE : 4.5XH

BLOW COMMENT #1 : INITIAL FLOW PERIOD VERY WEAK 1/2 INCH  
BLOW COMMENT #2 : BLOW FOR 20 MINUTES. FINAL FLOW PERIOD  
BLOW COMMENT #3 : VERY WEAK BLOW FOR 5 MINUTES.  
BLOW COMMENT #4 :



WESTERN TESTING CO. INC.  
WICHITA-KANSAS

Pressure Transient Report  
-----

COMPANY : RANGE OIL COMPANY INC.  
RIG : BUTLER-KANSAS  
FIELD : KANADY A  
WELL : 1  
DATE : 4/13/91  
GAUGE NO : 1051

OPERATIONAL COMMENTS

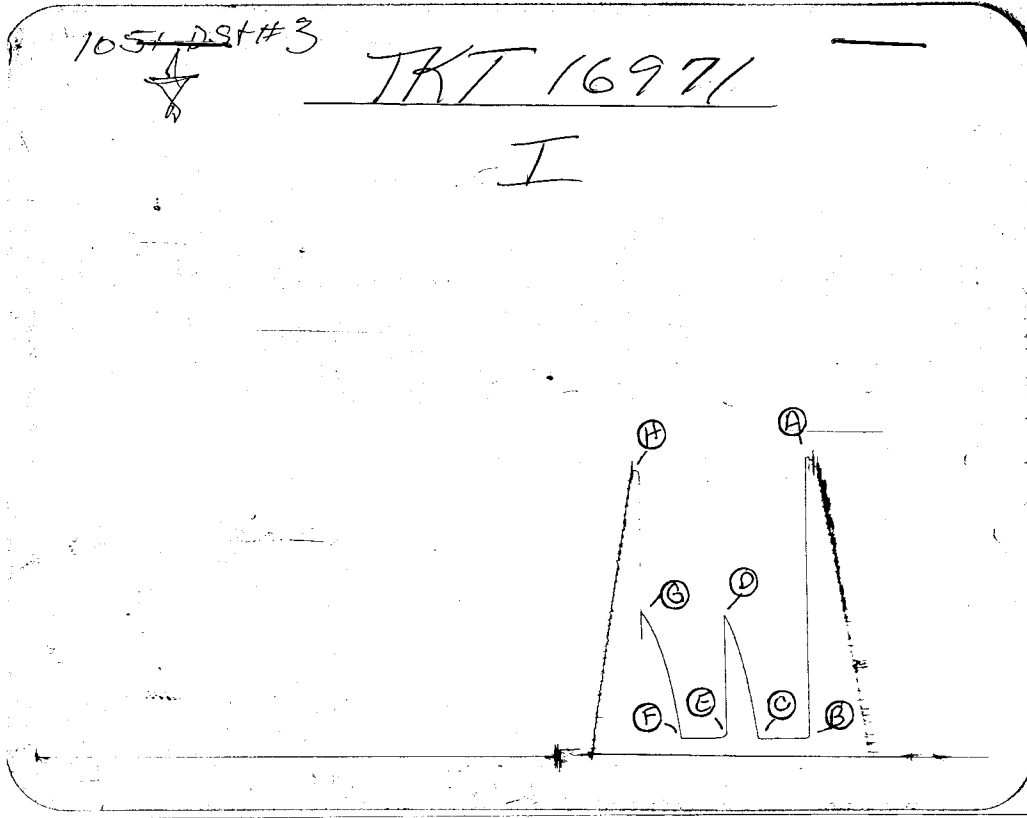
---

COMPANY : RANGE OIL COMPANY INC.  
 WELL : 1  
 GAUGE # : 1051  
 DATE : 13/ 4/91

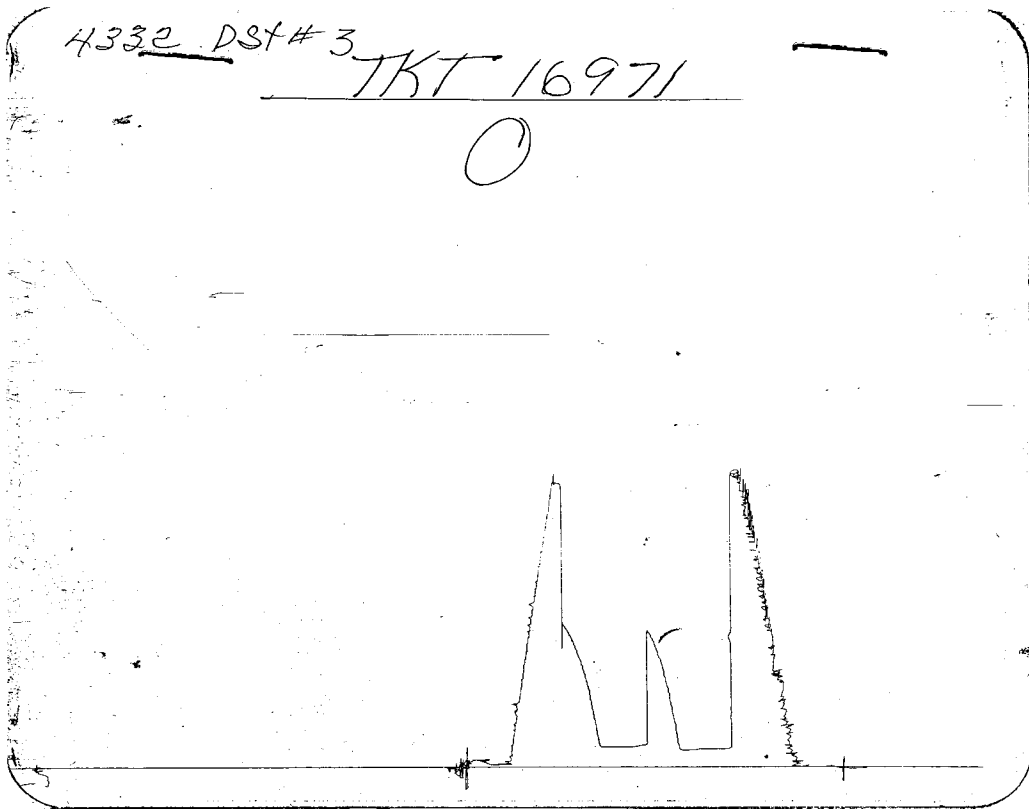
FIELD : KANADY A  
 JOB # : 16971  
 DEPTH : 3160  
 TEST :

DATA No.	REAL TIME HR:MN:SS	ELAPSE TIME DELTA HOURS	PRESSURE PSIG	TEMP DEG F	DELTA P Pi-P(i-1)
INITIAL FLOW PERIOD					
2	6:55: 0	0.000	107.000	108.00	0.000
3	6:59:59	0.083	107.000	108.00	0.000
4	7: 5: 0	0.167	107.000	108.00	0.000
5	7:10: 0	0.250	107.000	108.00	0.000
6	7:14:59	0.333	107.000	108.00	0.000
7	7:20: 0	0.417	107.000	108.00	0.000
8	7:25: 0	0.500	107.000	108.00	0.000
INITIAL SHUT-IN PERIOD					
9	7:28: 0	0.550	107.000	108.00	0.000
10	7:31: 0	0.600	107.000	108.00	0.000
11	7:34: 0	0.650	147.000	108.00	40.000
12	7:37: 0	0.700	284.000	108.00	137.000
13	7:40: 0	0.750	397.000	108.00	113.000
14	7:43: 0	0.800	492.000	108.00	95.000
15	7:46: 0	0.850	574.000	108.00	82.000
16	7:49: 0	0.900	640.000	108.00	66.000
17	7:52: 0	0.950	700.000	108.00	60.000
18	7:55: 0	1.000	749.000	108.00	49.000
19	7:58: 0	1.050	789.000	108.00	40.000
FINAL FLOW PERIOD					
20	7:59: 0	1.067	107.000	108.00	-682.000
21	8: 2:59	1.133	107.000	108.00	0.000
22	8: 8: 0	1.217	107.000	108.00	0.000
23	8:13: 0	1.300	107.000	108.00	0.000
24	8:17:59	1.383	107.000	108.00	0.000
25	8:23: 0	1.467	107.000	108.00	0.000
26	8:28: 0	1.550	107.000	108.00	0.000
FINAL SHUT-IN PERIOD					
27	8:31: 0	1.600	107.000	108.00	0.000
28	8:34: 0	1.650	235.000	108.00	128.000
29	8:37: 0	1.700	342.000	108.00	107.000
30	8:40: 0	1.750	433.000	108.00	91.000
31	8:43: 0	1.800	512.000	108.00	79.000
32	8:46: 0	1.850	580.000	108.00	68.000
33	8:49: 0	1.900	635.000	108.00	55.000
34	8:52: 0	1.950	689.000	108.00	54.000
35	8:55: 0	2.000	733.000	108.00	44.000
36	8:58: 0	2.050	773.000	108.00	40.000
37	9: 1: 0	2.100	808.000	108.00	35.000

WESTERN TESTING CO. INC.

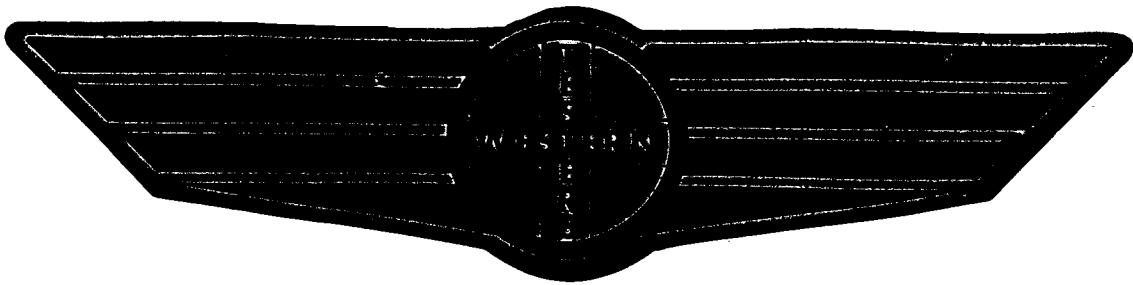


Inside Recorder



Outside Recorder

# FORMATION TEST REPORT



Home Office:  
P.O. Box 1599

Wichita, Kansas 67201  
Phone 1 - 800-688-7021

COMPANY RANGE OIL COMPANY, INC. LEASE & WELL NO. KANADY A #1 SEC. 6 TWP. 28S RGE. 8E TEST NO. 4 DATE 4/14/91

WESTERN TESTING CO. INC.  
SUBSURFACE PRESSURE SURVEY

DATE : 4/14/91 TICKET : 16972  
CUSTOMER : RANGE OIL COMPANY INC. LEASE : KANADY A  
WELL : 1 TEST: 4 GEOLOGIST : LAUER  
ELEVATION : 1512 GL FORMATION : ARBUCKLE  
SECTION : 6 TOWNSHIP : 28S  
RANGE : 8E COUNTY : BUTLER STATE : KANSAS  
GAUGE SN# : 1051 RANGE : 4250 CLOCK : 12

INTERVAL FROM : 3086 TO : 3168 TOTAL DEPTH : 3168  
DEPTH OF SELECTIVE ZONE :  
PACKER DEPTH : 3081 SIZE : 6.63  
PACKER DEPTH : 3086 SIZE : 6.63  
PACKER DEPTH : SIZE :  
PACKER DEPTH : SIZE :

DRILLING CON. : RED TIGER  
MUD TYPE : CHEMICAL VISCOSITY : 42  
WEIGHT : 9.2 WATER LOSS (CC) : 11.2  
CHLORIDES (PPM) : 1400  
JARS-MAKE : NO SERIAL NUMBER :  
DID WELL FLOW ? : NO REVERSED OUT ? : NO

DRILL COLLAR LENGTH : 0 FT I.D. inch : 0.00  
WEIGHT PIPE LENGTH : 628 FT I.D. inch : 2.70  
DRILL PIPE LENGTH : 2438 FT I.D. inch : 3.80  
TEST TOOL LENGTH : 20 FT TOOL SIZE : 5.50  
ANCHOR LENGTH : 82 FT ANCHOR SIZE : 5.50  
SURFACE CHOKE SIZE : .75 IN BOTTOM CHOKE SIZE : .75  
MAIN HOLE SIZE : 7.875 IN TOOL JOINT SIZE : 4.5XH

BLOW COMMENT #1 : INITIAL FLOW PERIOD VERY WEAK BLOW.  
BLOW COMMENT #2 : FINAL FLOW PERIOD VERY WEAK BLOW FOR  
BLOW COMMENT #3 : 10 MINUTES AND DIED.  
BLOW COMMENT #4 :

RECOVERED : 60 FT OF: DRILLING MUD

Total Barrels Fluid = 0.42  
Total Fluid Prod Rate = 9.41 BFPD  
Indicated Wtr Rate = 0.94 BWPD

REMARK 1 :  
REMARK 2 :  
REMARK 3 :  
REMARK 4 :

SET PACKER(S) : 5:40 AM

TIME STARTED OFF BOTTOM : 7:40 AM

WELL TEMPERATURE : 114

INITIAL HYDROSTATIC PRESSURE

(A) 1642

INITIAL FLOW PERIOD MIN: 30

(B) 101 PSI TO (C) : 101

INITIAL CLOSED IN PERIOD MIN: 33

(D) 986

FINAL FLOW PERIOD MIN: 35

(E) 118 PSI TO (F) : 118

FINAL CLOSED IN PERIOD MIN: 36

(G) 951

FINAL HYDROSTATIC PRESSURE

(H) 1624

WESTERN TESTING CO. INC.  
WICHITA-KANSAS

Pressure Transient Report  
-----

COMPANY : RANGE OIL COMPANY INC.  
RIG : BUTLER-KANSAS  
FIELD : KANADY A  
WELL : 1  
DATE : 4/14/91  
GAUGE NO : 1051

OPERATIONAL COMMENTS

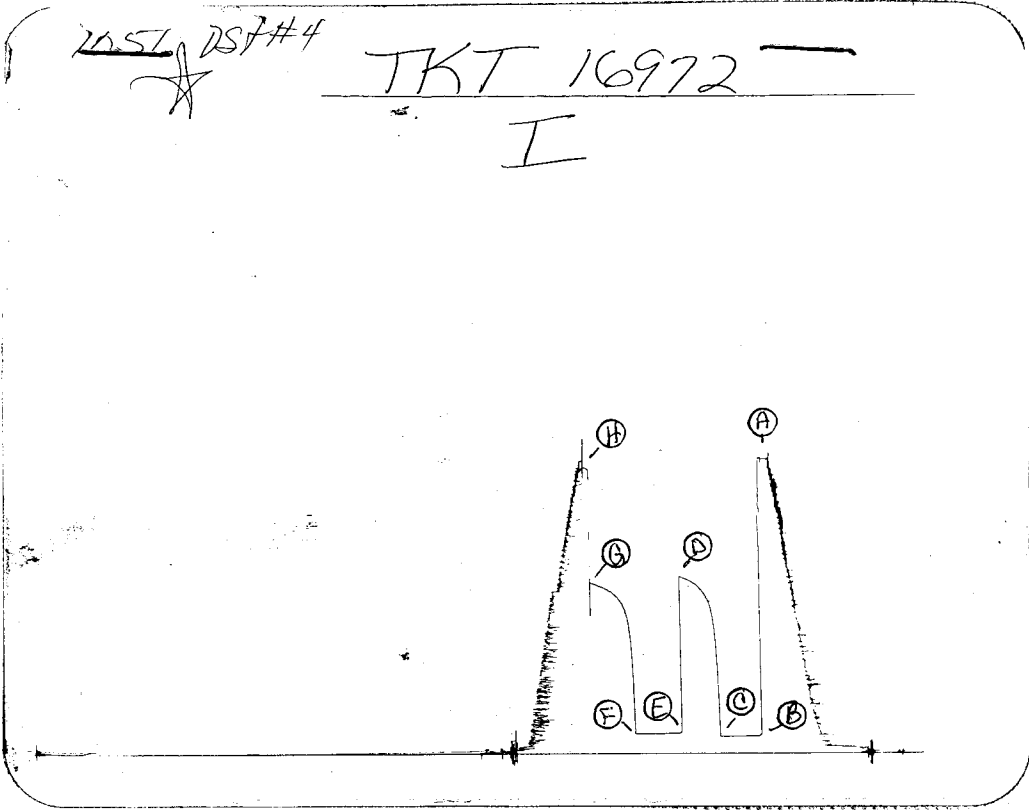
---

COMPANY : RANGE OIL COMPANY INC.  
 WELL : 1  
 GAUGE # : 1051  
 DATE : 14/ 4/91

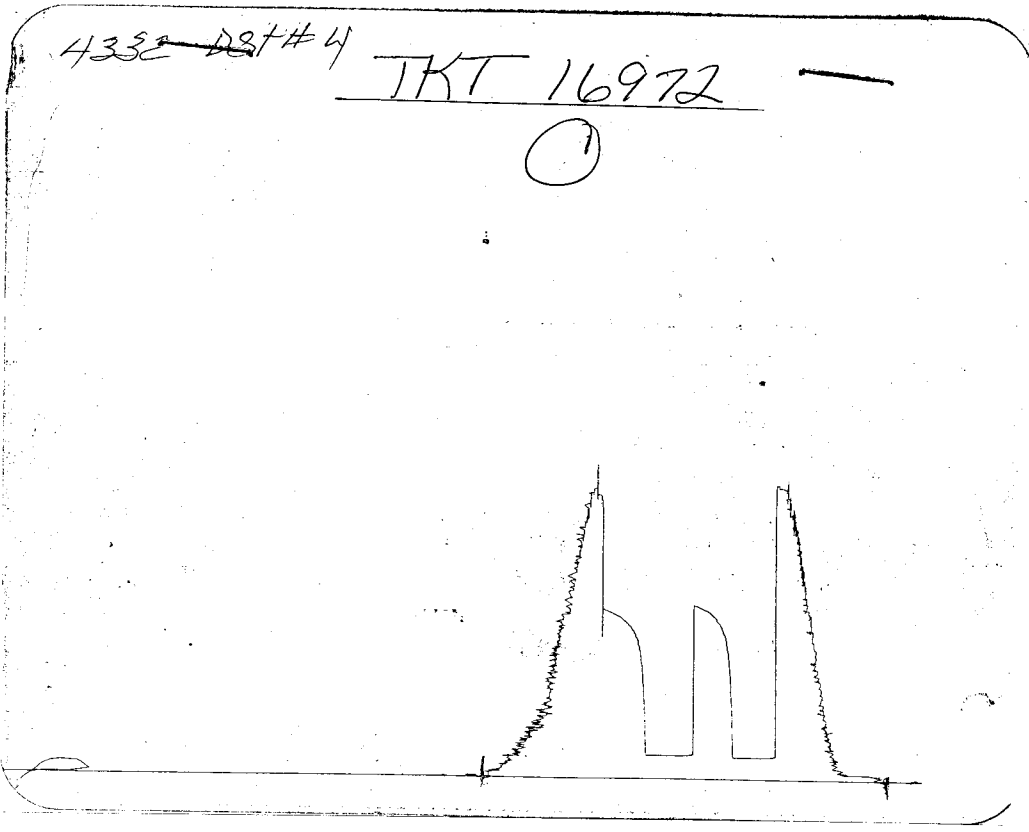
FIELD : KANADY A  
 JOB # : 16972  
 DEPTH : 3168  
 TEST :

DATA No.	REAL TIME HR:MN:SS	ELAPSE TIME DELTA HOURS	PRESSURE PSIG	TEMP DEG F	DELTA P Pi-P(i-1)
INITIAL FLOW PERIOD					
2	5:40: 0	0.000	101.000	114.00	0.000
3	5:44:59	0.083	101.000	114.00	0.000
4	5:50: 0	0.167	101.000	114.00	0.000
5	5:55: 0	0.250	101.000	114.00	0.000
6	5:59:59	0.333	101.000	114.00	0.000
7	6: 5: 0	0.417	101.000	114.00	0.000
8	6:10: 0	0.500	101.000	114.00	0.000
INITIAL SHUT-IN PERIOD					
9	6:13: 0	0.550	354.000	114.00	253.000
10	6:16: 0	0.600	584.000	114.00	230.000
11	6:19: 0	0.650	741.000	114.00	157.000
12	6:22: 0	0.700	831.000	114.00	90.000
13	6:25: 0	0.750	880.000	114.00	49.000
14	6:28: 0	0.800	912.000	114.00	32.000
15	6:31: 0	0.850	938.000	114.00	26.000
16	6:34: 0	0.900	953.000	114.00	15.000
17	6:37: 0	0.950	965.000	114.00	12.000
18	6:40: 0	1.000	976.000	114.00	11.000
19	6:43: 0	1.050	986.000	114.00	10.000
FINAL FLOW PERIOD					
20	6:44: 0	1.067	118.000	114.00	-868.000
21	6:47:59	1.133	118.000	114.00	0.000
22	6:53: 0	1.217	118.000	114.00	0.000
23	6:58: 0	1.300	118.000	114.00	0.000
24	7: 2:59	1.383	118.000	114.00	0.000
25	7: 8: 0	1.467	118.000	114.00	0.000
26	7:13: 0	1.550	118.000	114.00	0.000
27	7:17:59	1.633	118.000	114.00	0.000
FINAL SHUT-IN PERIOD					
28	7:20:59	1.683	476.000	114.00	358.000
29	7:23:59	1.733	667.000	114.00	191.000
30	7:26:59	1.783	780.000	114.00	113.000
31	7:29:59	1.833	836.000	114.00	56.000
32	7:32:59	1.883	870.000	114.00	34.000
33	7:35:59	1.933	891.000	114.00	21.000
34	7:38:59	1.983	906.000	114.00	15.000
35	7:41:59	2.033	922.000	114.00	16.000
36	7:44:59	2.083	932.000	114.00	10.000
37	7:47:59	2.133	940.000	114.00	8.000
38	7:50:59	2.183	948.000	114.00	8.000
39	7:53:59	2.233	951.000	114.00	3.000

WESTERN TESTING CO. INC.



Inside Recorder



Outside Recorder