

300 ft. from S. Line  $\frac{1}{4}$   
 300 " " W "  $\frac{1}{4}$

10-28-NE

Starkey Well No. 1.

Strata Thickness Depth

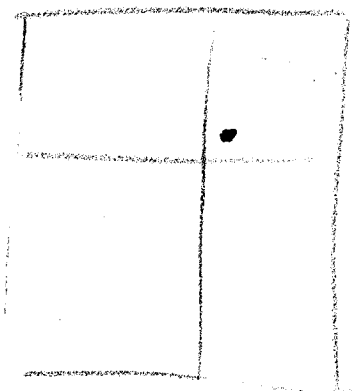
soil	3	3
shale	12	15
lime	3	18
shale	12	30
lime	10	40
shale	10	50
lime	20	70
shale	10	80
red rock	10	90
shale	30	120
red rock	10	130
shale	35	165
lime	20	185
shale	100	285
sand	25	310
shale	10	320
lime	20	340
shale	15	355
lime	20	375
shale	10	385
red rock	20	405
shale	5	410
lime	15	425
shale	10	435
red rock	5	440
shale	35	475
sand	50	525
shale	120	645
lime	5	650
shale	20	670
lime	10	680
shale	55	735
lime	145	880
shale	158	1038
lime	12	1050
shale	15	1065
lime	5	1070
shale	10	1080
red rock	10	1090
shale	15	1105
lime	85	1190
black shale	5	1195
lime Reduced hole	10	1205
sand	3	1208
lime	7	1215
black shale	5	1220
lime	5	1225
sand	3	1228
lime	7	1235
sand broken	5	1240
red sand	45	1285
shale	95	1380
lime	5	1385
black shale	10	1395
lime	7	1402

lime	5	1805?
shale	10	1815
red rock	35	1850
shale	45	1895
black shale	10	1905
Mississippi Lime	49	1954

Commenced Spudding Feb. 27, 1923.

12 $\frac{1}{2}$ Drive pipe	182 ft.
10 Casing	375 ft.
8 Casing	912 ft.
6 Casing	1685 ft.

Plated



sand shale	48	1450
lime	2	1452
shale	68	1520
lime	30	1550
shale black	5	1555
shale light	20	1570
lime	35	1605
shale black	5	1610
shale blue	75	1685
shale light	80	1765
red rock	34	1799