

WESTERN TESING CO. INC.
SUBSURFACE PRESSURE SURVEY

DATE: 10/23/83
CUSTOMER: GRAHAM MICHAELIS CORP.
WELL: #9 "A" TEST: 1
ELEVATION (KB): 1209
SECTION: 16
RANGE: 4E
GAUGE SN #2605

COUNTY: BUTLER
RANGE: 4150

TICKET #19190
LEASE: VARNER
GEOLOGIST: B. JOHNSON
FORMATION: ARBUCKLE
TOWNSHIP: 28S
STATE: KANSAS
CLOCK: 12

INTERVAL TEST FROM: 2467 FT TO: 2477 FT TOTAL DEPTH: 2477 FT
DEPTH OF SELECTIVE ZONE: FT
PACKER DEPTH: 2467 FT SIZE: 6 3/4 IN PACKER DEPTH: FT SIZE: IN
PACKER DEPTH: FT SIZE: IN PACKER DEPTH: FT SIZE: IN

DRILLING CONTRACTOR: WHITE & ELLIS # 5
MUD TYPE: CHEM VISCOSITY: 36
WEIGHT: 9.4 WATER LOSS (CC): 9.8
CHLORIDES (P.P.M.): 2500

JARS - MAKE: NO SERIAL NUMBER:
DID WELL FLOW? NO REVERSED OUT? NO
DRILL COLLAR LENGTH: 240 FT I.D.: 2.25 IN
WEIGHT PIPE LENGTH: FT I.D.: IN
DRILL PIPE LENGTH: FT I.D.: 3.8 IN
TEST TOOL LENGTH: 15 FT TOOL SIZE: 5 1/2 O.D. IN
ANCHOR LENGTH: 10 FT SIZE: 5 1/2 O.D. IN
SURFACE CHOKE SIZE: 3/4 IN BOTTOM CHOKE SIZE: 3/4 IN
MAIN HOLE SIZE: 7 7/8 IN TOOL JOINT SIZE: 4 1/2 IF IN

BLOW: INITIAL & FINAL FLOW PERIODS HAD
WEAK BLOWS THROUGHOUT TEST.

RECOVERED: 225 FT OF: FREE OIL
RECOVERED: 60 FT OF: MUD CUT OIL
RECOVERED: FT OF:
RECOVERED: FT OF:
RECOVERED: FT OF:
RECOVERED: FT OF:
RECOVERED: FT OF:
RECOVERED: FT OF:
RECOVERED: FT OF:
RECOVERED: FT OF:

REMARKS:

TIME SET PACKER(S): 5:05 P.M.
WELL TEMPERATURE: 103 °F
INITIAL HYDROSTATIC PRESSURE:
INITIAL FLOW PERIOD MIN: 30
INITIAL CLOSED IN PERIOD MIN: 30
FINAL FLOW PERIOD MIN: 45
FINAL CLOSED IN PERIOD MIN: 48
FINAL HYDROSTATIC PRESSURE

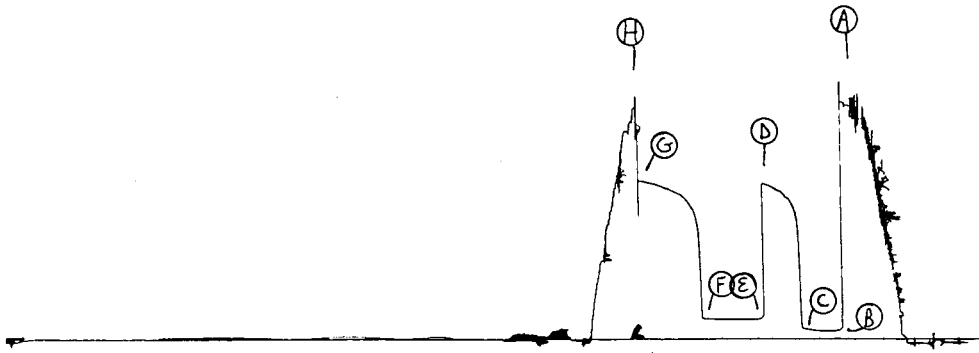
TIME STARTED OFF BOTTOM:

(A) 1285 PSI
(B) 44 PSI TO (C) 59 PSI
(D) 844 PSI
(E) 108 PSI TO (F) 112 PSI
(G) 856 PSI
(H) 1244 PSI

TKT # 19190

2605
DST # 1

I





WESTERN TESTING CO., INC.
FORMATION TESTING

TICKET NO: 19190

P. O. BOX 1599 WICHITA, KANSAS 67201
PHONE (316) 262-5861

Elevation KB1209 Formation Arls Eff. Pay Ft.

District Augusta Date 10-23-83 Customer Order No.

COMPANY NAME Graham - Michaelis Corp

ADDRESS Box 247 Wichita 211 N. Broadway 67202

LEASE AND WELL NO Varner A#9 COUNTY Butler STATE KS Sec. 16 Twp 28S Rge. 4E

Mail Invoice To Same #9 "A" VARNER No. Copies Requested 1

Mail Charts To One Copy Bill Johnson, 101 South Star Ellsworth 67042 No. Copies Requested 5

Formation Test No. 1 Interval Tested From 2467 ft. to 2477 ft. Total Depth 2477 ft.

Packer Depth 2467 ft. Size 6 3/4 in. Packer Depth ft. Size in.

Packer Depth ft. Size in. Packer Depth ft. Size in.

Depth of Selective Zone Set

Top Recorder Depth (Inside) 2469 ft. Recorder Number 2605 Cap. 4150

Bottom Recorder Depth (Outside) 2474 ft. Recorder Number 3474 Cap. 3000

Below Straddle Recorder Depth ft. Recorder Number Cap.

Drilling Contractor W+E#5 Drill Collar Length 240 I. D. 2.25 in.

Mud Type Chem Viscosity 34 Weight Pipe Length I. D. in.

Weight 9.4 Water Loss 9.8 cc. Drill Pipe Length I. D. 3.8 in.

Chlorides 2500 P.P.M. Test Tool Length 15 ft. Tool Size 5 1/2 in.

Jars: Make NO Serial Number Anchor Length 10 ft. Size 5 1/2 in.

Did Well Flow? NO Reversed Out NO Surface Choke Size 3/4 in. Bottom Choke Size 3/4 in.

Main Hole Size 7 7/8 in. Tool Joint Size 4 1/2 IF in.

Blow: Weak blow throughout test

Recovered 225 ft. of free Oil

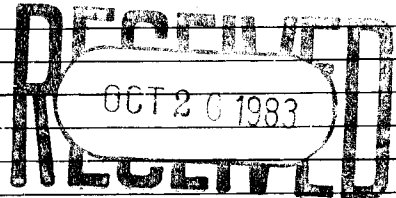
Recovered 60 ft. of mud cut Oil

Recovered ft. of

Recovered ft. of

Recovered ft. of

Remarks:



Time On Location 2:00 A.M. P.M. Time Pick Up Tool 4:00 A.M. P.M. Time Off Location A.M. P.M.

Time Set Packer(s) 5:05 A.M. P.M. Time Started Off Bottom A.M. P.M. Maximum Temperature 103

Initial Hydrostatic Pressure (A) 1264 P.S.I.

Initial Flow Period Minutes 30 (B) 52 P.S.I. to (C) 63 P.S.I.

Initial Closed In Period Minutes 30 (D) 850 P.S.I.

Final Flow Period Minutes 45 (E) 95 P.S.I. to (F) 95 P.S.I.

Final Closed In Period Minutes 45 (G) 850 P.S.I.

Final Hydrostatic Pressure (H) 1264 P.S.I.

COMPANY TERMS

Western Testing Co., Inc. shall not be liable for damages of any kind to the property or personnel of the one for whom a test is made or for any loss suffered or sustained directly or indirectly through the use of its equipment, of its statements or opinion concerning the results of any test. Tools lost or damaged in the hole shall be paid at cost by the party for whom the test is made.

All charges subject to 12% interest after 60 days from date of invoice. Any expense incurred for collection will be added to the original amount.

Test Approved By [Signature] Signature of Customer or his authorized representative

Western Representative [Signature] Kenny Kurland

FIELD INVOICE

Table with 2 columns: Item and Amount. Items include Open Hole Test, Misrun, Straddle Test, Jars, Selective Zone, Safety Joint, Standby, Evaluation, Extra Packer, Circ. Sub., Mileage, Fluid Sampler, Extra Charts, Insurance, Telecopier, and TOTAL. Amounts are listed in dollars, with a total of \$550.00.

WESTERN TESTING CO., INC.

Pressure Data

Date 10-23

Test Ticket No. 19190

Recorder No. 2605 Capacity _____ Location _____ Ft.

Clock No. _____ Elevation _____ Well Temperature _____ °F

Point	Pressure	Time Given	Time Computed
A Initial Hydrostatic Mud	<u>1285</u> P.S.I.		M
B First Initial Flow Pressure	<u>44</u> P.S.I.	_____ Mins.	_____ Mins.
C First Final Flow Pressure	<u>59</u> P.S.I.	_____ Mins.	_____ Mins.
D Initial Closed-in Pressure	<u>844</u> P.S.I.	_____ Mins.	_____ Mins.
E Second Initial Flow Pressure	<u>108</u> P.S.I.	_____ Mins.	_____ Mins.
F Second Final Flow Pressure	<u>112</u> P.S.I.		
G Final Closed-in Pressure	<u>856</u> P.S.I.		
H Final Hydrostatic Mud	<u>1244</u> P.S.I.		

PRESSURE BREAKDOWN

First Flow Pressure
Breakdown: 7 Inc.
of 5 mins. and a
final inc. of 0 Min.

Initial Shut-In
Breakdown: 11 Inc.
of 3 mins. and a
final inc. of 0 Min.

Second Flow Pressure
Breakdown: 10 Inc.
of 5 mins. and a
final inc. of 0 Min.

Final Shut-In
Breakdown: 17 Inc.
of 3 mins. and a
final inc. of 0 Min.

Point Mins.	Press.	Point Minutes	Press.	Point Minutes	Press.	Point Minutes	Press.
P 1 <u>0</u>	<u>44</u>	<u>0</u>	<u>59</u>	<u>0</u>	<u>108</u>	<u>0</u>	<u>112</u>
P 2 <u>5</u>	<u>7</u>	<u>3</u>	<u>593</u>	<u>5</u>	<u>7</u>	<u>3</u>	<u>597</u>
P 3 <u>10</u>		<u>6</u>	<u>715</u>	<u>10</u>		<u>6</u>	<u>693</u>
P 4 <u>15</u>	<u>44</u>	<u>9</u>	<u>753</u>	<u>15</u>		<u>9</u>	<u>728</u>
P 5 <u>20</u>	<u>47</u>	<u>12</u>	<u>771</u>	<u>20</u>		<u>12</u>	<u>757</u>
P 6 <u>25</u>	<u>54</u>	<u>15</u>	<u>796</u>	<u>25</u>	<u>108</u>	<u>15</u>	<u>778</u>
P 7 <u>30</u>	<u>59</u>	<u>18</u>	<u>809</u>	<u>30</u>	<u>108</u>	<u>18</u>	<u>790</u>
P 8 <u>35</u>		<u>21</u>	<u>820</u>	<u>35</u>	<u>110</u>	<u>21</u>	<u>800</u>
P 9 <u>40</u>		<u>24</u>	<u>832</u>	<u>40</u>	<u>111</u>	<u>24</u>	<u>811</u>
P 10 <u>45</u>		<u>27</u>	<u>840</u>	<u>45</u>	<u>112</u>	<u>27</u>	<u>819</u>
P 11 <u>50</u>		<u>30</u>	<u>844</u>	<u>50</u>		<u>30</u>	<u>827</u>
P 12 <u>55</u>		<u>33</u>		<u>55</u>		<u>33</u>	<u>836</u>
P 13 <u>60</u>		<u>36</u>		<u>60</u>		<u>36</u>	<u>842</u>
P 14 _____		<u>39</u>		<u>65</u>		<u>39</u>	<u>846</u>
P 15 _____		<u>42</u>		<u>70</u>		<u>42</u>	<u>850</u>
P 16 _____		<u>45</u>		<u>75</u>		<u>45</u>	<u>854</u>
P 17 _____		<u>48</u>		<u>80</u>		<u>48</u>	<u>856</u>
P 18 _____		<u>51</u>		<u>85</u>		<u>51</u>	
P 19 _____		<u>54</u>		<u>90</u>		<u>54</u>	
P 20 _____		<u>57</u>				<u>57</u>	
		<u>60</u>				<u>60</u>	

WESTERN TESING CO. INC.
SUBSURFACE PRESSURE SURVEY

DATE: 10/24/83
CUSTOMER: GRAHAM MICHAELIS CORP.
WELL: #9 "A" TEST: 2
ELEVATION (KB): 1209
SECTION: 16
RANGE: 4E
GAUGE SN #2605

TICKET #19191
LEASE: VARNER
GEOLOGIST: B. JOHNSON
FORMATION: ARBUCKLE
TOWNSHIP: 28S
COUNTY: BUTLER
STATE: KANSAS
RANGE: 4150
CLOCK: 12

INTERVAL TEST FROM: 2484 FT TO: 2495 FT TOTAL DEPTH: 2501 FT
DEPTH OF SELECTIVE ZONE: FT
PACKER DEPTH: 2484 FT SIZE: 6 3/4 IN PACKER DEPTH: 2495 FT SIZE: 6 3/4 IN
PACKER DEPTH: FT SIZE: IN PACKER DEPTH: FT SIZE: IN

DRILLING CONTRACTOR: WHITE & ELLIS #5
MUD TYPE: CHEM VISCOSITY: 43
WEIGHT: 9.6 WATER LOSS (CC): 9.8
CHLORIDES (P.P.M.): 2500
JARS - MAKE: NO SERIAL NUMBER:
DID WELL FLOW? NO REVERSED OUT?
DRILL COLLAR LENGTH: 300 FT I.D.: 2.25 IN
WEIGHT PIPE LENGTH: FT I.D.: IN
DRILL PIPE LENGTH: 2160 FT I.D.: 3.8 IN
TEST TOOL LENGTH: 15 FT TOOL SIZE: 5 1/2 O.D. IN
ANCHOR LENGTH: 11 FT SIZE: 5 1/2 O.D. IN
SURFACE CHOKE SIZE: 3/4 IN BOTTOM CHOKE SIZE: 3/4 IN
MAIN HOLE SIZE: 7 7/8 IN TOOL JOINT SIZE: 4 1/2 XH IN

BLOW: INTIAL & FINAL FLOW PERIODS HAD
GOOD BLOWS THROUGHOUT.

RECOVERED: 180 FT OF: GAS IN PIPE
RECOVERED: 525 FT OF: FREE OIL
RECOVERED: 60 FT OF: MUD CUT OIL
RECOVERED: FT OF:
RECOVERED: FT OF:
RECOVERED: FT OF:
RECOVERED: FT OF:
RECOVERED: FT OF:
RECOVERED: FT OF:

REMARKS:

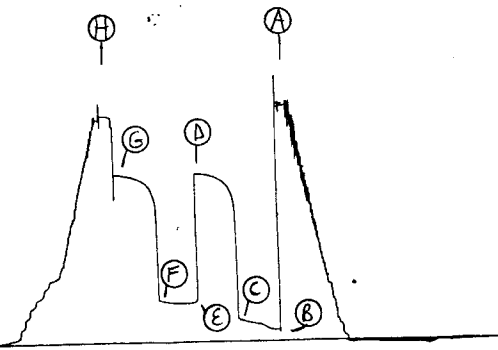
TIME SET PACKER(S): 4:10 A.M. TIME STARTED OFF BOTTOM: 6:10 A.M.
WELL TEMPERATURE: 103 °F
INITIAL HYDROSTATIC PRESSURE: (A) 1263 PSI
INITIAL FLOW PERIOD MIN: 30 (B) 60 PSI TO (C) 123 PSI
INITIAL CLOSED IN PERIOD MIN: 33 (D) 904 PSI
FINAL FLOW PERIOD MIN: 30 (E) 208 PSI TO (F) 225 PSI
FINAL CLOSED IN PERIOD MIN: 30 (G) 904 PSI
FINAL HYDROSTATIC PRESSURE (H) 1211 PSI

TKT # 19191

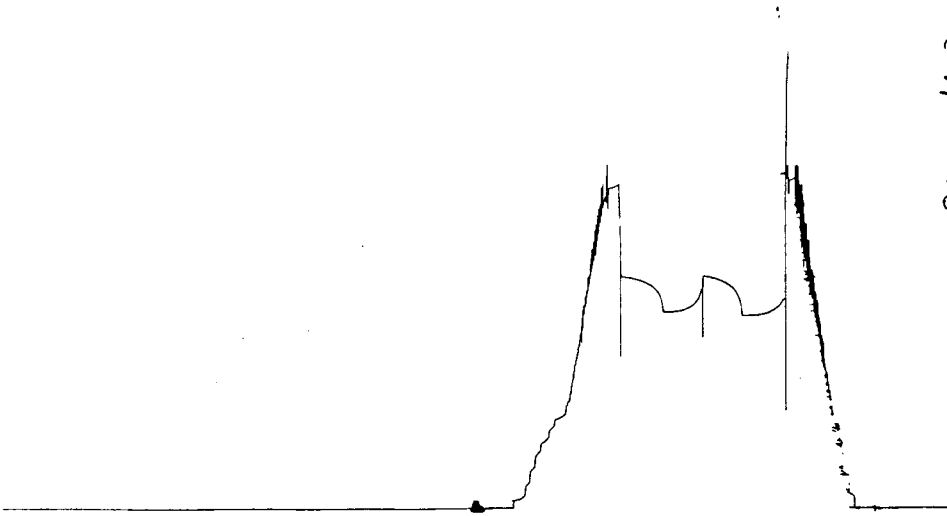
I

2605

DS#2
Straddle Post
19191



TKT # 19191 Bottom
Below Straddle chart



0 ST # 2 Straddle chart 19191



WESTERN TESTING CO., INC.
FORMATION TESTING

TICKET

OK
No 19191

P. O. BOX 1599 PHONE (316) 262-5861
WICHITA, KANSAS 67201

Elevation 1209 Kb Formation Arb Eff. Pay _____ Ft.

District Augusta Date 10-24-83 Customer Order No. _____

COMPANY NAME Heakam - Michelson Corp

ADDRESS Box 247 Wichita Ks 211 N. Broadway 67202

LEASE AND WELL NO Varner #9 COUNTY Butler STATE Ks Sec. 16 Twp 28S Rge. 4E

Mail Invoice To Same #9 "A" VARNER No. Copies Requested 1

Co. Name _____ Address _____

Mail Charts To One Copy Bell Johnson No. Copies Requested 5

Formation Test No. 2 Interval Tested From 2484 ft. to 2495 ft. Total Depth 2501 ft.

Packer Depth 2484 ft. Size 6 3/4 in. Packer Depth _____ ft. Size _____ in.

Packer Depth 2495 ft. Size 6 3/4 in. Packer Depth _____ ft. Size _____ in.

Depth of Selective Zone Set _____

Top Recorder Depth (Inside) 2485 ft. Recorder Number 2605 Cap. 4150

Bottom Recorder Depth (Outside) 2497 ft. Recorder Number 3474 Cap. 3000

Below Straddle Recorder Depth _____ ft. Recorder Number _____ Cap. _____

Drilling Contractor WTE #5 Drill Collar Length 300 I. D. 2.25 in.

Mud Type 43 Viscosity Chem Weight Pipe Length _____ I. D. _____ in.

Weight 9.4 Water Loss 9.8 cc. Drill Pipe Length 2160 I. D. 3.8 in.

Chlorides 2500 P.P.M. Test Tool Length 15 ft. Tool Size 5 1/2 in.

Jars: Make NU Serial Number _____ Anchor Length 11 ft. Size 5 1/2 in.

Did Well Flow? NO Reversed Out _____ Surface Choke Size 3/4 in. Bottom Choke Size 3/4 in.

Main Hole Size 7 7/8 in. Tool Joint Size 1 1/2 x H in.

Blow: good first flow, good blow second flow

Recovered 180 ft. of gas in pipe

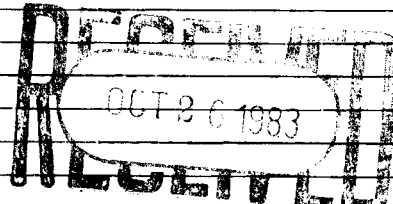
Recovered 525 ft. of free oil

Recovered 60 ft. of mud cut oil

Recovered _____ ft. of _____

Recovered _____ ft. of _____

Remarks Staby after DSTH



Time On Location _____ A.M. Time Pick Up Tool _____ A.M. Time Off Location _____ A.M.

Time Set Packer(s) 4:10 P.M. Time Started Off Bottom 6:10 A.M. Maximum Temperature 103°

Initial Hydrostatic Pressure _____ (A) 1264 P.S.I.

Initial Flow Period _____ Minutes 30 (B) 63 P.S.I. to (C) 126 P.S.I.

Initial Closed In Period _____ Minutes 30 (D) 891 P.S.I.

Final Flow Period _____ Minutes 30 (E) 211 P.S.I. to (F) 232 P.S.I.

Final Closed In Period _____ Minutes 30 (G) 902 P.S.I.

Final Hydrostatic Pressure _____ (H) 1264 P.S.I.

COMPANY TERMS

Western Testing Co., Inc. shall not be liable for damages of any kind to the property or personnel of the one for whom a test is made or for any loss suffered or sustained directly or indirectly through the use of its equipment, of its statements or opinion concerning the results of any test. Tools lost or damaged in the hole shall be paid at cost by the party for whom the test is made.

All charges subject to 12% interest after 60 days from date of invoice. Any expense incurred for collection will be added to the original amount.

Test Approved By _____
Signature of Customer or his authorized representative

Western Representative Kenny Kurland

FIELD INVOICE

Open Hole Test	\$ 550.00
Misrun	\$
Straddle Test	\$ 300.00
Jars	\$
Selective Zone	\$
Safety Joint	\$
Standby	\$
Evaluation	\$
Extra Packer	\$
Circ. Sub.	\$
Mileage	\$
Fluid Sampler	\$
Extra Charts	\$
Insurance	\$
Telecopier	\$
TOTAL	\$ 850.00

WESTERN TESTING CO., INC.

Pressure Data

Date: 10-24 Test Ticket No. 19191
 Recorder No. 2605 Capacity _____ Location _____ Ft.
 Clock No. _____ Elevation _____ Well Temperature _____ °F

Point	Pressure	Open Tool	Time Given	Time Computed
A Initial Hydrostatic Mud	<u>1263</u> P.S.I.	_____	_____	_____
B First Initial Flow Pressure	<u>60</u> P.S.I.	_____	_____	_____
C First Final Flow Pressure	<u>123</u> P.S.I.	_____	_____	_____
D Initial Closed-in Pressure	<u>904</u> P.S.I.	_____	_____	_____
E Second Initial Flow Pressure	<u>208</u> P.S.I.	_____	_____	_____
F Second Final Flow Pressure	<u>225</u> P.S.I.	_____	_____	_____
G Final Closed-in Pressure	<u>904</u> P.S.I.	_____	_____	_____
H Final Hydrostatic Mud	<u>1211</u> P.S.I.	_____	_____	_____

PRESSURE BREAKDOWN

First Flow Pressure
 Breakdown: 7 Inc.
 of 5 mins. and a
 final inc. of 0 Min.

Initial Shut-In
 Breakdown: 13 Inc.
 of 3 mins. and a
 final inc. of 0 Min.

Second Flow Pressure
 Breakdown: 7 Inc.
 of 5 mins. and a
 final inc. of 0 Min.

Final Shut-In
 Breakdown: 11 Inc.
 of 3 mins. and a
 final inc. of 0 Min.

Point Mins.	Press.	Point Minutes	Press.	Point Minutes	Press.	Point Minutes	Press.
P 1 0	<u>60</u>	0	<u>123</u>	0	<u>208</u>	0	<u>225</u>
P 2 5	<u>61</u>	3	<u>717</u>	5	<u>7</u>	3	<u>804</u>
P 3 10	<u>78</u>	6	<u>807</u>	10	_____	6	<u>843</u>
P 4 15	<u>94</u>	9	<u>840</u>	15	<u>208</u>	9	<u>861</u>
P 5 20	<u>101</u>	12	<u>861</u>	20	<u>212</u>	12	<u>872</u>
P 6 25	<u>111</u>	15	<u>874</u>	25	<u>220</u>	15	<u>881</u>
P 7 30	<u>123</u>	18	<u>886</u>	30	<u>225</u>	18	<u>889</u>
P 8 35	_____	21	<u>894</u>	35	_____	21	<u>895</u>
P 9 40	_____	24	<u>898</u>	40	_____	24	<u>898</u>
P 10 45	_____	27	<u>901</u>	45	_____	27	<u>901</u>
P 11 50	_____	30	<u>903</u>	50	_____	30	<u>904</u>
P 12 55	_____	33	<u>904</u>	55	_____	38	_____
P 13 60	_____	36	_____	60	_____	36	_____
P 14 _____	_____	39	_____	65	_____	39	_____
P 15 _____	_____	42	_____	70	_____	42	_____
P 16 _____	_____	45	_____	75	_____	45	_____
P 17 _____	_____	48	_____	80	_____	48	_____
P 18 _____	_____	51	_____	85	_____	51	_____
P 19 _____	_____	54	_____	90	_____	54	_____
P 20 _____	_____	57	_____	_____	_____	57	_____
		60	_____	_____	_____	60	_____

WESTERN TESTING CO. INC.
SUBSURFACE PRESSURE SURVEY

DATE: 10/24/83
CUSTOMER: GRAHAM MICHAELIS CORP.
WELL: #9 "A" TEST: 3
ELEVATION (KB): 1209
SECTION: 16
RANGE: 4E
GAUGE SN #2605

TICKET #19192
LEASE: VARNER
GEOLOGIST: B. JOHNSON
FORMATION: ARBUCKLE
TOWNSHIP: 28S
COUNTY: BUTLER
STATE: KANSAS
RANGE: 4150
CLOCK: 12

INTERVAL TEST FROM: 2514 FT TO: 2520 FT TOTAL DEPTH: 2520 FT
DEPTH OF SELECTIVE ZONE: FT
PACKER DEPTH: 2514 FT SIZE: 6 3/4 IN PACKER DEPTH: FT SIZE: IN
PACKER DEPTH: FT SIZE: IN PACKER DEPTH: FT SIZE: IN

DRILLING CONTRACTOR: WHITE & ELLIS # 5
MUD TYPE: CHEM VISCOSITY: 47
WEIGHT: 9.4 WATER LOSS (CC): 9.8
CHLORIDES (P.P.M.): 2500
JARS - MAKE: NO SERIAL NUMBER:
DID WELL FLOW? NO REVERSED OUT? YES
DRILL COLLAR LENGTH: 300 FT I.D.: 2.25 IN
WEIGHT PIPE LENGTH: FT I.D.: IN
DRILL PIPE LENGTH: 2184 FT I.D.: 3.8 IN
TEST TOOL LENGTH: 20 FT TOOL SIZE: 5 1/2 O.D. IN
ANCHOR LENGTH: 6 FT SIZE: 5 1/2 O.D. IN
SURFACE CHOKE SIZE: 3/4 IN BOTTOM CHOKE SIZE: 3/4 IN
MAIN HOLE SIZE: 7 7/8 IN TOOL JOINT SIZE: 4 1/2 IF IN

BLOW: INTIAL & FINAL FLOW PERIODS HAD
GOOD BLOWS THROUGHOUT.

RECOVERED: 30 FT OF: FREE OIL.
RECOVERED: 1020 FT OF: SALT WATER.
RECOVERED: FT OF: CHLORIDES 22000 P.P.M.
RECOVERED: FT OF:
RECOVERED: FT OF:
RECOVERED: FT OF:
RECOVERED: FT OF:
RECOVERED: FT OF:
RECOVERED: FT OF:

REMARKS:

TIME SET PACKER(S): 2:20 P.M. TIME STARTED OFF BOTTOM: 4:20 P.M.
WELL TEMPERATURE: 104 'F
INITIAL HYDROSTATIC PRESSURE: (A) 1269 PSI
INITIAL FLOW PERIOD MIN: 30 (B) 66 PSI TO (C) 251 PSI
INITIAL CLOSED IN PERIOD MIN: 30 (D) 960 PSI
FINAL FLOW PERIOD MIN: 35 (E) 335 PSI TO (F) 447 PSI
FINAL CLOSED IN PERIOD MIN: 30 (G) 958 PSI
FINAL HYDROSTATIC PRESSURE (H) 1269 PSI

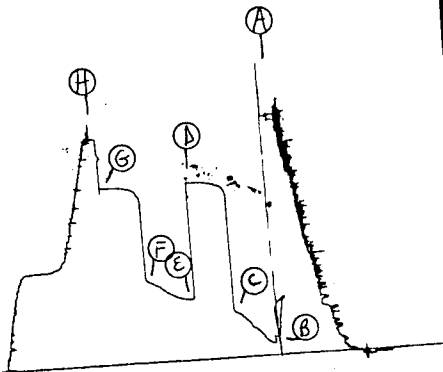
TKT # 19192

I

st 3

~~2605~~

2605





WESTERN TESTING CO., INC.
FORMATION TESTING

TICKET

No 19192

OK

P. O. BOX 1599 PHONE (316) 262-5861
WICHITA, KANSAS 67201

Elevation 1209 Kb Formation Arls Eff. Pay Ft.

District Augusta Date 10-24-83 Customer Order No.

COMPANY NAME Graham Michael Corp

ADDRESS Box 247 Wichita Ks 211 N. Broadway 67202

LEASE AND WELL NO. Varner #9 COUNTY Butler STATE Ks Sec. 16 Twp 28E Rge. 40E

Mail Invoice To Same #9 "A" VARNER No. Copies Requested 1

Mail Charts To One Copy Bell Johnson No. Copies Requested 5

Formation Test No. 3 Interval Tested From 2514 ft. to 2520 ft. Total Depth 2520 ft.

Packer Depth 2514 ft. Size 6 3/4 in. Packer Depth ft. Size in.

Packer Depth ft. Size in. Packer Depth ft. Size in.

Depth of Selective Zone Set

Top Recorder Depth (Inside) AP 2504 ft. Recorder Number 2605 Cap. 4150

Bottom Recorder Depth (Outside) 2515 ft. Recorder Number 10593474 Cap. 3000

Below Straddle Recorder Depth ft. Recorder Number Cap.

Drilling Contractor WTE #5 Drill Collar Length 300 I. D. 2.25 in.

Mud Type Chem Viscosity 47 Weight Pipe Length I. D. in.

Weight 9.4 Water Loss 9.8 cc. Drill Pipe Length 2184 I. D. 3.8 in.

Chlorides 2500 P.P.M. Test Tool Length 20 ft. Tool Size 5 1/2 in.

Jars: Make no Serial Number Anchor Length 4 ft. Size 5 1/2 in.

Did Well Flow? no Reversed Out yes Surface Choke Size 3/4 in. Bottom Choke Size 3/4 in.

Main Hole Size 7 7/8 in. Tool Joint Size 4 1/2 IF in.

Blow: good blow throughout test

Recovered 30 ft. of free oil

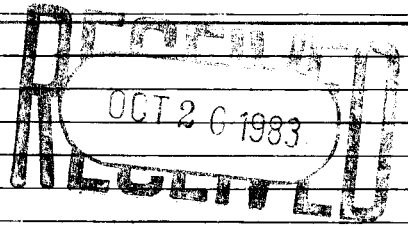
Recovered 1020 ft. of salt water

Recovered ft. of

Recovered ft. of

Recovered ft. of

Remarks: clouds 22,000



Time On Location A.M. P.M. Time Pick Up Tool A.M. P.M. Time Off Location A.M. P.M.

Time Set Packer(s) 2:20 A.M. P.M. Time Started Off Bottom 4:20 A.M. P.M. Maximum Temperature 104

Initial Hydrostatic Pressure (A) 1275 P.S.I.

Initial Flow Period Minutes 30 (B) 63 P.S.I. to (C) 234 P.S.I.

Initial Closed In Period Minutes 30 (D) 964 P.S.I.

Final Flow Period Minutes 30 (E) 328 P.S.I. to (F) 444 P.S.I.

Final Closed In Period Minutes 30 (G) 964 P.S.I.

Final Hydrostatic Pressure (H) 1275 P.S.I.

COMPANY TERMS

Western Testing Co., Inc. shall not be liable for damages of any kind to the property or personnel of the one for whom a test is made or for any loss suffered or sustained directly or indirectly through the use of its equipment, of its statements or opinion concerning the results of any test. Tools lost or damaged in the hole shall be paid at cost by the party for whom the test is made.

All charges subject to 12% interest after 60 days from date of invoice. Any expense incurred for collection will be added to the original amount.

Test Approved By: [Signature] Signature of Customer or his authorized representative

Western Representative: Kenneth Kerber

FIELD INVOICE

Table with 2 columns: Item and Amount. Items include Open Hole Test (\$350.00), Misc. Sub (\$350.00), and TOTAL (\$585.00).

WESTERN TESTING CO., INC.

Pressure Data

Date 10-24 Test Ticket No. 19192
 Recorder No. 2605 Capacity _____ Location _____ Ft.
 Clock No. _____ Elevation _____ Well Temperature _____ °F

Point	Pressure	Open Tool	Time Given	Time Computed
A Initial Hydrostatic Mud	<u>1269</u> P.S.I.	_____	_____	_____
B First Initial Flow Pressure	<u>66</u> P.S.I.	_____	_____ Mins.	_____ Mins.
C First Final Flow Pressure	<u>251</u> P.S.I.	_____	_____ Mins.	_____ Mins.
D Initial Closed-in Pressure	<u>960</u> P.S.I.	_____	_____ Mins.	_____ Mins.
E Second Initial Flow Pressure	<u>335</u> P.S.I.	_____	_____ Mins.	_____ Mins.
F Second Final Flow Pressure	<u>447</u> P.S.I.	_____	_____ Mins.	_____ Mins.
G Final Closed-in Pressure	<u>958</u> P.S.I.	_____	_____ Mins.	_____ Mins.
H Final Hydrostatic Mud	<u>1269</u> P.S.I.	_____	_____	_____

PRESSURE BREAKDOWN

First Flow Pressure
 Breakdown: 7 Inc.
 of 5 mins. and a
 final inc. of 0 Min.

Initial Shut-In
 Breakdown: 11 Inc.
 of 3 mins. and a
 final inc. of 0 Min.

Second Flow Pressure
 Breakdown: 8 Inc.
 of 5 mins. and a
 final inc. of 0 Min.

Final Shut-In
 Breakdown: 11 Inc.
 of 3 mins. and a
 final inc. of 0 Min.

Point Mins.	Press.	Point Minutes	Press.	Point Minutes	Press.	Point Minutes	Press.
P 1 <u>0</u>	<u>66</u>	<u>0</u>	<u>251</u>	<u>0</u>	<u>335</u>	<u>0</u>	<u>447</u>
P 2 <u>5</u>	<u>82</u>	<u>3</u>	<u>917</u>	<u>5</u>	<u>337</u>	<u>3</u>	<u>913</u>
P 3 <u>10</u>	<u>127</u>	<u>6</u>	<u>936</u>	<u>10</u>	<u>346</u>	<u>6</u>	<u>939</u>
P 4 <u>15</u>	<u>161</u>	<u>9</u>	<u>943</u>	<u>15</u>	<u>362</u>	<u>9</u>	<u>947</u>
P 5 <u>20</u>	<u>206</u>	<u>12</u>	<u>948</u>	<u>20</u>	<u>382</u>	<u>12</u>	<u>951</u>
P 6 <u>25</u>	<u>240</u>	<u>15</u>	<u>953</u>	<u>25</u>	<u>413</u>	<u>15</u>	<u>954</u>
P 7 <u>30</u>	<u>251</u>	<u>18</u>	<u>956</u>	<u>30</u>	<u>432</u>	<u>18</u>	<u>955</u>
P 8 <u>35</u>	_____	<u>21</u>	<u>957</u>	<u>35</u>	<u>447</u>	<u>21</u>	<u>956</u>
P 9 <u>40</u>	_____	<u>24</u>	<u>958</u>	<u>40</u>	_____	<u>24</u>	<u>957</u>
P 10 <u>45</u>	_____	<u>27</u>	<u>959</u>	<u>45</u>	_____	<u>27</u>	<u>958</u>
P 11 <u>50</u>	_____	<u>30</u>	<u>960</u>	<u>50</u>	_____	<u>30</u>	<u>958</u>
P 12 <u>55</u>	_____	<u>33</u>	_____	<u>55</u>	_____	<u>33</u>	_____
P 13 <u>60</u>	_____	<u>36</u>	_____	<u>60</u>	_____	<u>36</u>	_____
P 14 _____	_____	<u>39</u>	_____	<u>65</u>	_____	<u>39</u>	_____
P 15 _____	_____	<u>42</u>	_____	<u>70</u>	_____	<u>42</u>	_____
P 16 _____	_____	<u>45</u>	_____	<u>75</u>	_____	<u>45</u>	_____
P 17 _____	_____	<u>48</u>	_____	<u>80</u>	_____	<u>48</u>	_____
P 18 _____	_____	<u>51</u>	_____	<u>85</u>	_____	<u>51</u>	_____
P 19 _____	_____	<u>54</u>	_____	<u>90</u>	_____	<u>54</u>	_____
P 20 _____	_____	<u>57</u>	_____	_____	_____	<u>57</u>	_____
	_____	<u>60</u>	_____	_____	_____	<u>60</u>	_____