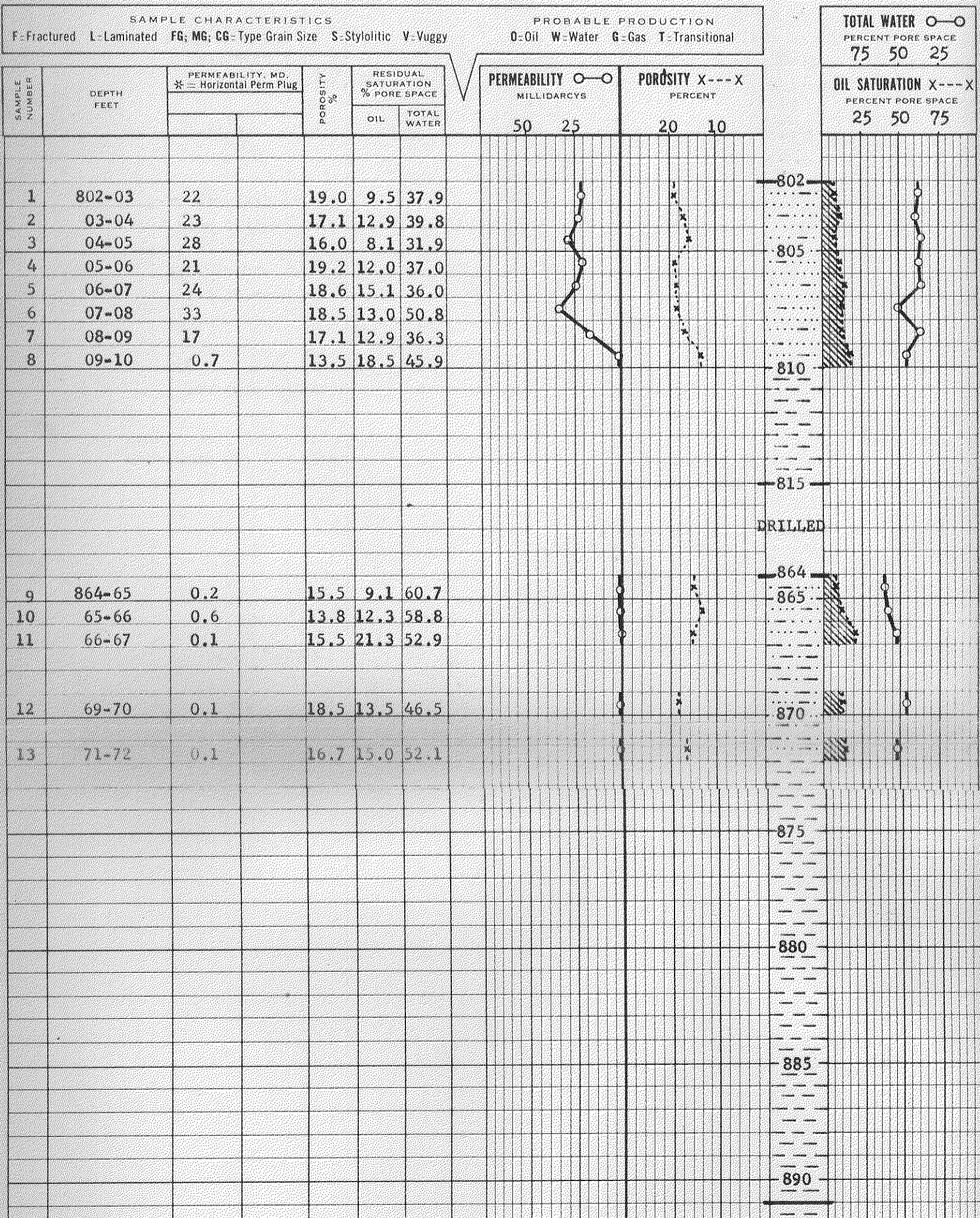


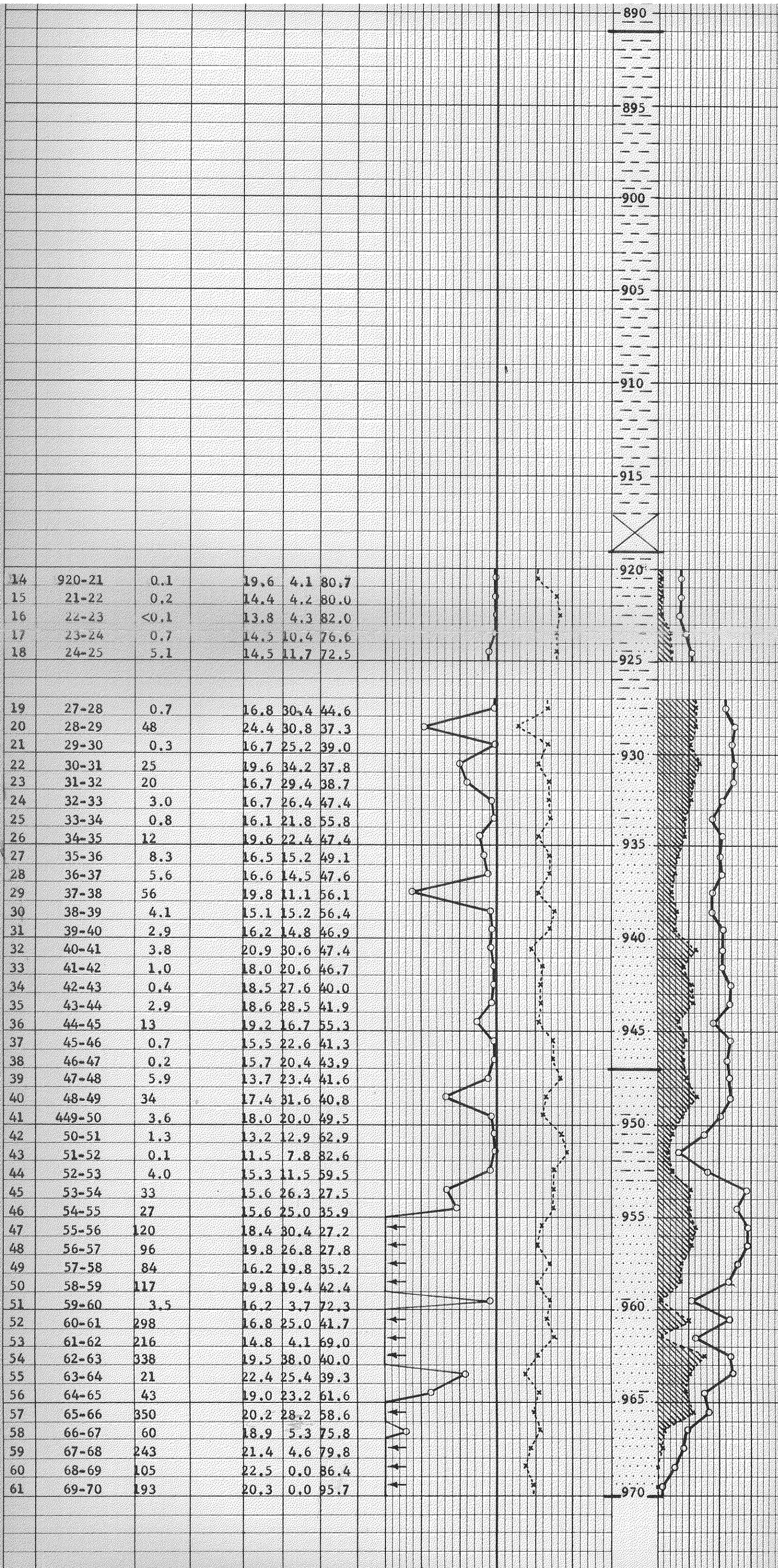
COMPANY K-K DRILLING COMPANY FILE NO. CP-10-1309  
 WELL (Arthur) AUTHER NO. 1 DATE 3-26-65 ENGRS. SMITH  
 FIELD CHANUTE FORMATION BARTLESVILLE ELEV. 969' GL  
 COUNTY NEOSHO STATE KANSAS DRLG. FLD FRESH WATER CORES DIAMOND  
 LOCATION \_\_\_\_\_ REMARKS CLI SAMPLED

# COMPLETION COREGRAPH

These analyses, opinions or interpretations are based on observations and material supplied by the client to whom, and for whose exclusive and confidential use, this report is made. The interpretations or opinions expressed represent the best judgment of Core Laboratories, Inc. (all errors and omissions excepted), but Core Laboratories, Inc. and its officers and employees, assume no responsibility and make no warranty or representations as to the productivity, proper operation, or profitability of any oil, gas or other mineral well or sand in connection with which such report is used or relied upon.

SAND LIMESTONE CONGLOMERATE CHERT ANHYDRITE   
 SHALE DOLOMITE OOLITES





14	920-21	0.1	19.6	4.1	80.7
15	21-22	0.2	14.4	4.2	80.0
16	22-23	<0.1	13.8	4.3	82.0
17	23-24	0.7	14.5	10.4	76.6
18	24-25	5.1	14.5	11.7	72.5
19	27-28	0.7	16.8	30.4	44.6
20	28-29	48	24.4	30.8	37.3
21	29-30	0.3	16.7	25.2	39.0
22	30-31	25	19.6	34.2	37.8
23	31-32	20	16.7	29.4	38.7
24	32-33	3.0	16.7	26.4	47.4
25	33-34	0.8	16.1	21.8	55.8
26	34-35	12	19.6	22.4	47.4
27	35-36	8.3	16.5	15.2	49.1
28	36-37	5.6	16.6	14.5	47.6
29	37-38	56	19.8	11.1	56.1
30	38-39	4.1	15.1	15.2	56.4
31	39-40	2.9	16.2	14.8	46.9
32	40-41	3.8	20.9	30.6	47.4
33	41-42	1.0	18.0	20.6	46.7
34	42-43	0.4	18.5	27.6	40.0
35	43-44	2.9	18.6	28.5	41.9
36	44-45	13	19.2	16.7	55.3
37	45-46	0.7	15.5	22.6	41.3
38	46-47	0.2	15.7	20.4	43.9
39	47-48	5.9	13.7	23.4	41.6
40	48-49	34	17.4	31.6	40.8
41	449-50	3.6	18.0	20.0	49.5
42	50-51	1.3	13.2	12.9	62.9
43	51-52	0.1	11.5	7.8	82.6
44	52-53	4.0	15.3	11.5	59.5
45	53-54	33	15.6	26.3	27.5
46	54-55	27	15.6	25.0	35.9
47	55-56	120	18.4	30.4	27.2
48	56-57	96	19.8	26.8	27.8
49	57-58	84	16.2	19.8	35.2
50	58-59	117	19.8	19.4	42.4
51	59-60	3.5	16.2	3.7	72.3
52	60-61	298	16.8	25.0	41.7
53	61-62	216	14.8	4.1	69.0
54	62-63	338	19.5	38.0	40.0
55	63-64	21	22.4	25.4	39.3
56	64-65	43	19.0	23.2	61.6
57	65-66	350	20.2	28.2	58.6
58	66-67	60	18.9	5.3	75.8
59	67-68	243	21.4	4.6	79.8
60	68-69	105	22.5	0.0	86.4
61	69-70	193	20.3	0.0	95.7