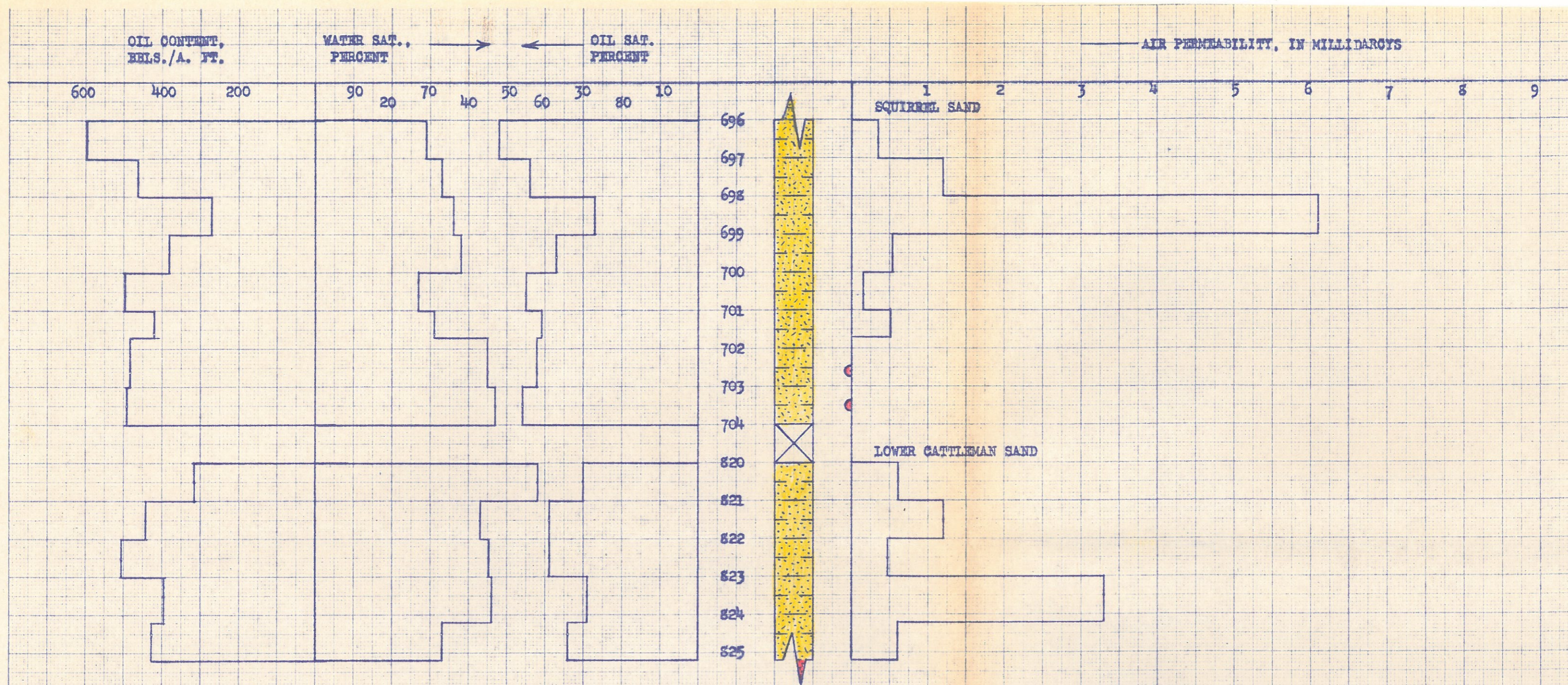


DEPTH



KEY:
 SHALY SANDSTONE
 CARBONACEOUS SHALY SANDSTONE
 BREAK

CALCAREOUS SANDSTONE
 SANDY SHALE
 IMPERMEABLE TO AIR

L. F. KEPLEY
 KEPLBY LEASE WILL NO. 2
 NEWSHO COUNTY, KANSAS

DEPTH INTERVAL, FEET	FEET OF CORE ANALYZED	AVERAGE PERCENT POROSITY	AVG. OIL SATURATION PERCENT	AVG. WATER SATURATION PERCENT	AVG. OIL CONTENT BBL./A.FT.	TOTAL OIL CONTENT BBL./ACRE	AVG. AIR PERMEABILITY MILLIDARCY
<u>SQUIRREL SAND</u>							
696.0 - 704.0	5.7	13.9	41.8	36.3	453	3,623	1.5
<u>LOWER CATTLEMAN SAND</u>							
820.0 - 825.2	5.2	15.8	34.0	45.0	416	2,162	1.3

Oilfield Research Laboratories
 Chanute, Kansas
 January, 1975