

WELL LOG BUREAU \* KANSAS GEOLOGICAL SOCIETY  
UNION NATIONAL BANK BLDG, WICHITA, KANSAS

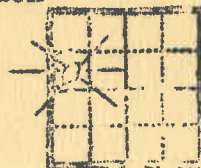
Location. CSW NW

Sec. 32 T. 28 R. 17E

Casing Record.

County. Wilson

20"	10 "	Farm. James Hammel	No. 1
15 $\frac{1}{2}$ "	8 $\frac{1}{2}$ " 13 $\frac{1}{2}$	Company. Peerless Oil and Refining Co.	
12 $\frac{1}{2}$ "	65/8" 451	Contr. Wilson Bros.	
Total Depth. 740	53/16"	Comm. 11-18-25	Comp. 11-27-25
		Shot	Quarts Between.



Correspondence Regarding This Well Should Be Referred To.

Figures Indicate Bottom of Formations.

Initial Production.

Date Issued. 7-4-31

Elevation.

20,000 cu ft.

Formation	Depth.
soil	1
shell line	15
shale mud	120
line	127
sd shale	150
water sand	190 very little.
sd shale	212
line	214
shale	242
line	332
5BW 255 ft.	
slate blk	338 HFW 338
shale	366
line	379
shale	381
line	390
shale dark	405
line	450 set 6 $\frac{1}{2}$ 451 feet.
shale dark	512
broken line	560
shale	650
line	684
shale	724
line	744??
slate blk	740?water and gas.
TD.	