

OILFIELD RESEARCH LABORATORIES

P. O. BOX 647 - CHANUTE, KANSAS 66720 - PHONE (316) 431-2650

January 3, 1986

G. M. Enterprises
R. 1, Box 199
Chanute, Kansas 66720

Gentlemen:

Attached hereto are the results of tests run on the rotary core taken from the McMillen Lease, Well No. G-3, located 3465 feet from the South Line and 1485 feet from the East Line (SW $\frac{1}{4}$, NE $\frac{1}{4}$) in Section 11, T28S, R17E, Neosho County, Kansas.

The core was sampled and sealed in plastic bags by a representative of the client and submitted to our laboratory on December 30, 1985.

Your business is greatly appreciated.

Very truly yours,

OILFIELD RESEARCH LABORATORIES

Alan M. Dunning
Alan M. Dunning

AMD:bl

5 c to Chanute, Kansas

11-28-17E
McMillen G-3

LOG

Company G. M. Enterprises Lease McMillen Well No. G-3

BARTLESVILLE SANDSTONE

<u>Depth Interval, Feet</u>	<u>Description</u>
925.0 - 928.0	Sandstone, brown.
928.0 - 929.0	Sandstone, brown, shaly with shale partings.
929.0 - 930.9	Sandstone, brown.
930.9 - 942.4	Sandstone and shale, light brown and gray, laminated.
942.4 - 945.5	Sandstone, light brown, slightly shaly with shale partings.

Oilfield Research Laboratories

RESULTS OF SATURATION & PERMEABILITY TESTS

TABLE 1

Company G. M. Enterprises Lease McMillen Well No. G-3

Sample No.	Depth, Feet	Porosity Percent	Percent Saturation			Oil Content Bbls. / A. Ft.	Permeability, Millidarcys
			Oil	Water	Total		
1	925.6	21.0	32	34	66	521	97.
2	926.5	20.7	34	35	69	546	123.
3	927.5	20.9	35	35	70	568	97.
4	928.5	14.7	40	44	84	456	1.2
5	929.5	18.2	36	31	67	508	60.
6	930.5	19.0	38	34	72	560	35.
7	931.5	14.5	22	60	82	248	0.26
8	932.6	13.3	12	73	85	124	0.26
9	933.5	15.3	26	51	77	309	1.1
10	934.5	14.2	21	58	79	231	0.24
11	935.6	13.9	22	62	84	237	Imp.
12	936.5	13.8	30	57	87	321	Imp.
13	937.5	14.3	20	57	77	222	Imp.
14	938.5	13.8	21	65	86	225	Imp.
15	939.5	13.2	19	70	89	195	Imp.
16	940.6	13.8	19	65	84	203	Imp.
17	941.5	13.9	24	70	94	259	Imp.
18	942.5	17.7	26	48	74	357	6.5
19	943.5	18.0	21	47	68	293	8.9
20	944.5	16.9	20	53	73	262	5.2

SECTION 11

TOWNSHIP 28

RANGE 17 E

NEASHO - COUNTY

●
OIL WELL

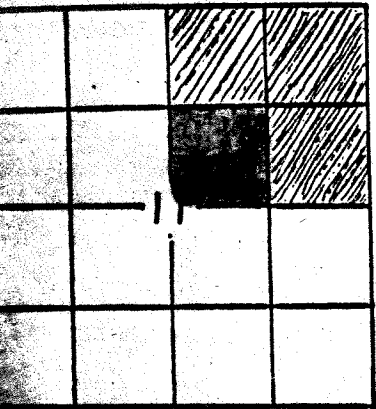
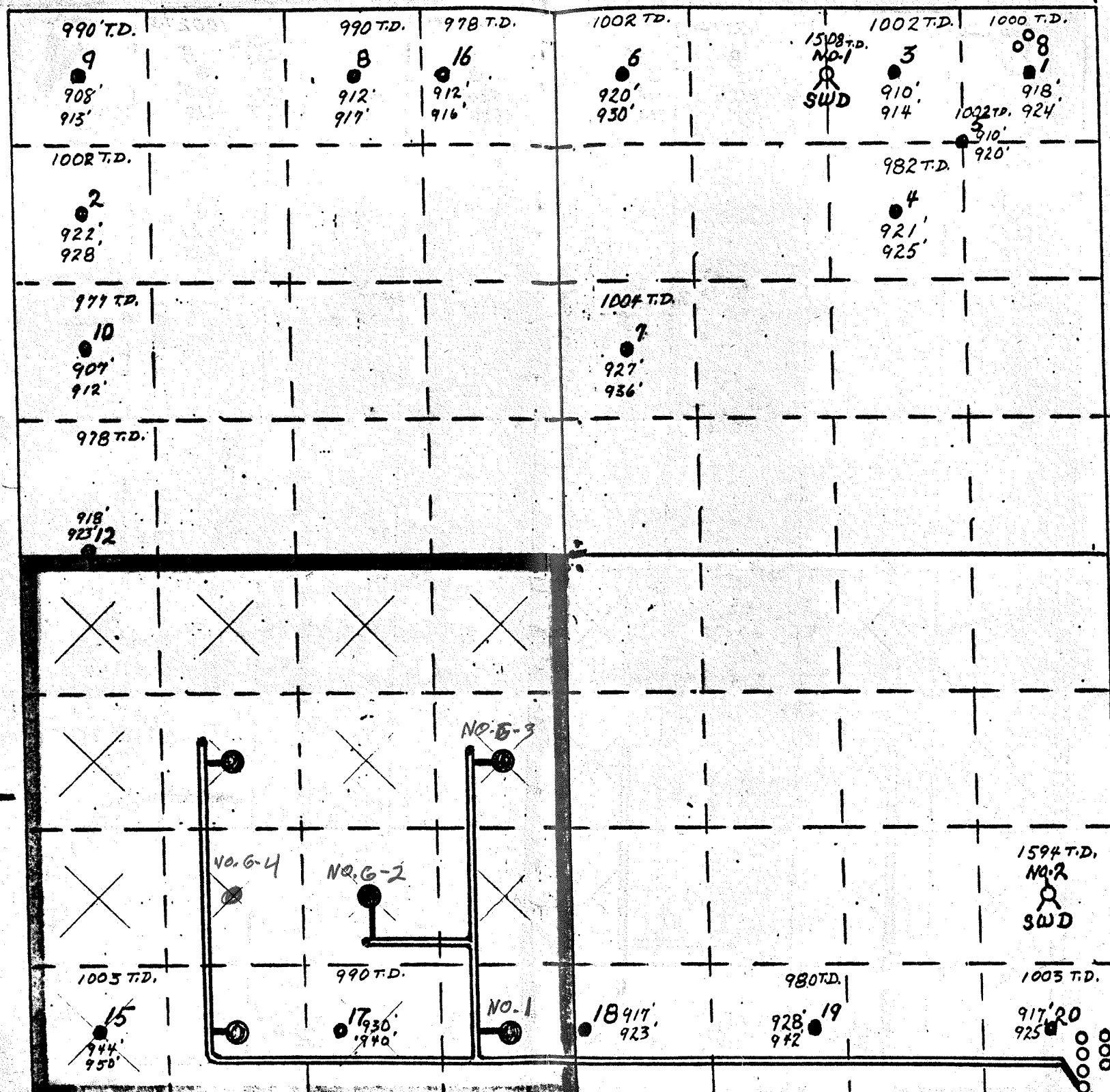
⊙
DISPSHL WELL

○○○
TANK BATTERY



11-28-17E
Mc Miller Lease

GUARDSMAN
TANK
BATTERY.



PROPOSED:
5 WELL LOCATION
GATHERING LINES

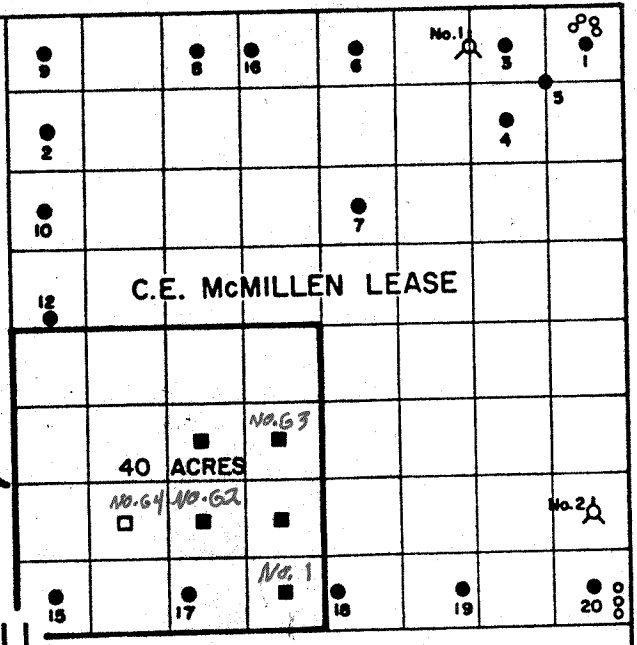
→

August 1951

WILSON CO.
NEOSHO CO.

PRIVATE ESTATE
(SCHICKE LEASE)

GUARDSMAN LEASE
(SW 1/4 of NE 1/4 of Section
11, T28S, R17E)



HANSEN LEASE

WING LEASE

11-28-17E
McMillan Lease

LEGEND

- Oil Well
- Proposed Well
- Alternate Location
- A Salt Water Disposal Well
- ** Tank Battery



GUARDSMAN RESOURCES INC.

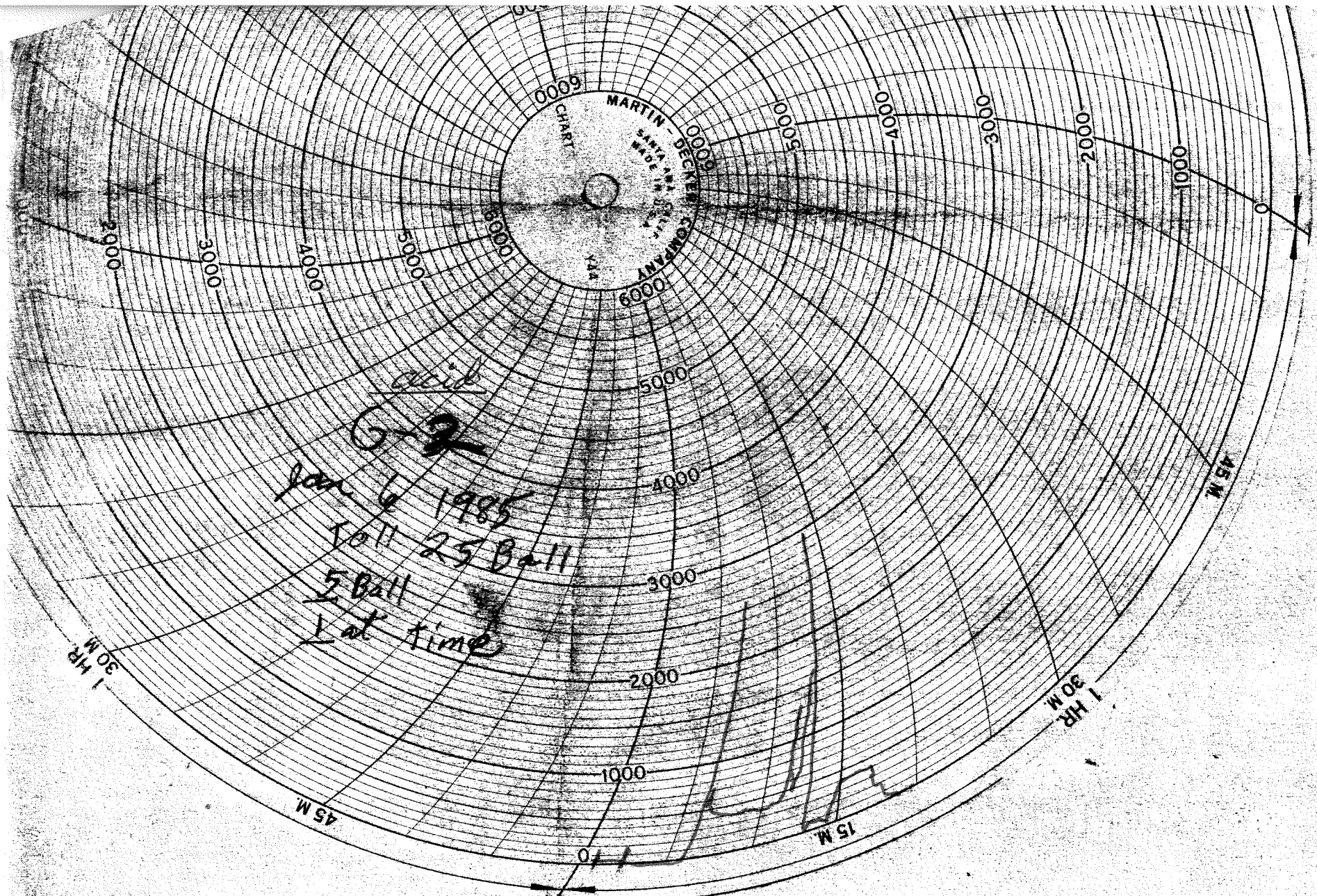
GEORGE R. KENT & ASSOCIATES LTD.

LEASE AND WELL
LOCATION MAP

WILSON & NEOSHO COUNTIES,
KANSAS

DATE AUG, 1985

MAP 2



11-28-17
McMillan lease