

# OILFIELD RESEARCH LABORATORIES

- REGISTERED ENGINEERS -

813 EAST SIXTH  
OKMULGEE, OKLAHOMA  
PHONE: 1486

Chanute, Kansas

536 N. HIGHLAND  
CHANUTE, KANSAS  
PHONE: 728

December 5, 1957

Creek Oil & Gas Company, Inc.  
P. O. Box 377  
Chanute, Kansas

Gentlemen:

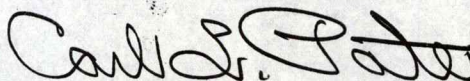
Enclosed herewith are the results of saturation tests run on the 3" Rotary core taken from the Wells Lease, Well No. 12, Neosho County, Kansas, and submitted to our laboratory by Mr. Larry Smith and Mr. Jack McKelvey on November 29, 1957.

This core was sampled and the samples sealed in cans by a representative of Creek Oil & Gas Company, Inc.

Your business is greatly appreciated.

Very truly yours,

OILFIELD RESEARCH LABORATORIES



Carl L. Pate

CLP:cb

5 c.

# Oilfield Research Laboratories

## GENERAL INFORMATION & SUMMARY

Company Creek Oil & Gas Company, Inc. Lease Wells Well No. 12

Location 1,450' S. of N. Line & 1340' E. of W. Line

Section 27 Twp. 28S Rge. 18E County Neosho State Kansas

Name of Sand - - - - - Bartlesville

Top of Core - - - - - 802.5

Bottom of Core - - - - - 844.0

Top of Sand - - - - - 803.0

Bottom of <sup>Good</sup>Sand - - - - - 828.0

Total Feet of Permeable Sand - - - - - ..

Total Feet of Floodable Sand - - - - - ..

Distribution of Permeable Sand: Permeability Range Millidarcys	Feet	Cum. Ft.
--	------	----------

Average Permeability Millidarcys - - - - - -

Average Percent Porosity - - - - - 17.5

Average Percent Oil Saturation - - - - - 37.7

Average Percent Water Saturation - - - - - 36.1

Average Oil Content, Bbls./A. Ft. - - - - - 522.

Total Oil Content, Bbls./Acre - - - - - 11,434.

Average Percent Oil Recovery by Laboratory Flooding Tests - - - - -

Average Oil Recovery by Laboratory Flooding Tests, Bbls./A. Ft. - - - - -

Total Oil Recovery by Laboratory Flooding Tests, Bbls./Acre - - - - -

Total Calculated Oil Recovery, Bbls./Acre - - - - -

Packer Setting, Feet - - - - -

Viscosity, Centipoises @ - - - - -

A. P. I. Gravity, degrees @ 60 °F - - - - -

Elevation, Feet - - - - -

LOG

Company Creek Oil & Gas Company, Inc. Lease Wells Well No, 12

Depth Interval, Description  
Feet

- 802.5 - 803.0 - Laminated sandy shale.
- 803.0 - 805.5 - Brown fine grained micaceous laminated shaley sandstone.
- 805.5 - 806.8 - Brown fine grained micaceous slightly laminated shaley sandstone.
- 806.8 - 809.3 - Brown fine grained micaceous laminated shaley sandstone.
- 809.3 - 814.3 - Laminated sandy shale.
- 814.3 - 816.9 - Brown fine grained micaceous laminated shaley sandstone.
- 816.9 - 818.2 - Brown fine grained micaceous sandstone.
- 818.2 - 819.3 - Dark brown fine grained micaceous sandstone.
- 819.3 - 819.9 - Brown fine grained micaceous laminated shaley sandstone.
- 819.9 - 821.8 - Dark brown fine grained micaceous sandstone.
- 821.8 - 822.3 - Brown fine grained micaceous slightly shaley sandstone.
- 822.3 - 824.5 - Dark brown fine grained micaceous sandstone.
- 824.5 - 825.2 - Dark brown fine grained micaceous carbonaceous sandstone.
- 825.2 - 829.0 - Brown fine grained micaceous carbonaceous laminated shaley sandstone.
- 829.0 - 837.0 - Brownish gray laminated shaley sandstone.
- 837.0 - 844.0 - Light brown fine grained micaceous slightly shaley sandstone.

RESULTS OF SATURATION TESTS

TABLE II

Company Creek Oil & Gas Company, Inc. Lease Wells Well No. 12

Sat. No.	Depth, Feet	Effective Porosity Percent	Percent Saturation			Oil Content Bbls./A. Ft.	Feet of Core		Total Oil Content Bbls./Acre
			Oil	Water	Total		Ft.	Cum. Ft.	
1	805.0	13.9	31	40	71	335	1.0	1.0	335
2	806.0	16.9	32	35	67	419	1.3	2.3	545
3	807.0	14.1	33	50	83	361	0.7	3.0	253
4	808.0	15.6	37	39	76	448	1.0	4.0	448
5	809.0	13.5	41	45	86	429	0.8	4.8	343
6	814.5	14.1	38	37	75	416	1.0	5.8	416
7	816.0	14.5	36	35	71	405	1.6	7.4	648
8	817.0	16.5	41	24	65	524	0.6	8.0	314
9	818.0	19.9	41	27	68	633	0.7	8.7	443
10	819.0	20.8	49	22	71	791	1.1	9.8	870
11	820.0	22.0	51	23	74	870	0.6	10.4	522
12	821.0	19.2	41	25	66	610	1.3	11.7	793
13	822.0	18.2	38	33	71	536	0.5	12.2	268
14	823.0	21.4	50	24	74	830	1.2	13.4	996
15	824.0	20.7	45	25	70	723	1.0	14.4	723
16	825.0	19.5	42	27	69	635	0.7	15.1	444
16-A	826.0	19.9	43	32	75	664	1.5	16.6	996
17	827.5	18.9	36	34	70	538	1.3	17.9	698
18	831.0	12.4	30	64	94	289	1.0	18.9	289
19	834.0	14.1	24	46	70	263	1.0	19.9	263
20	838.0	19.9	24	54	78	370	1.0	20.9	370
21	841.0	19.0	31	55	86	457	1.0	21.9	457
							Total	- - - - -	11,434

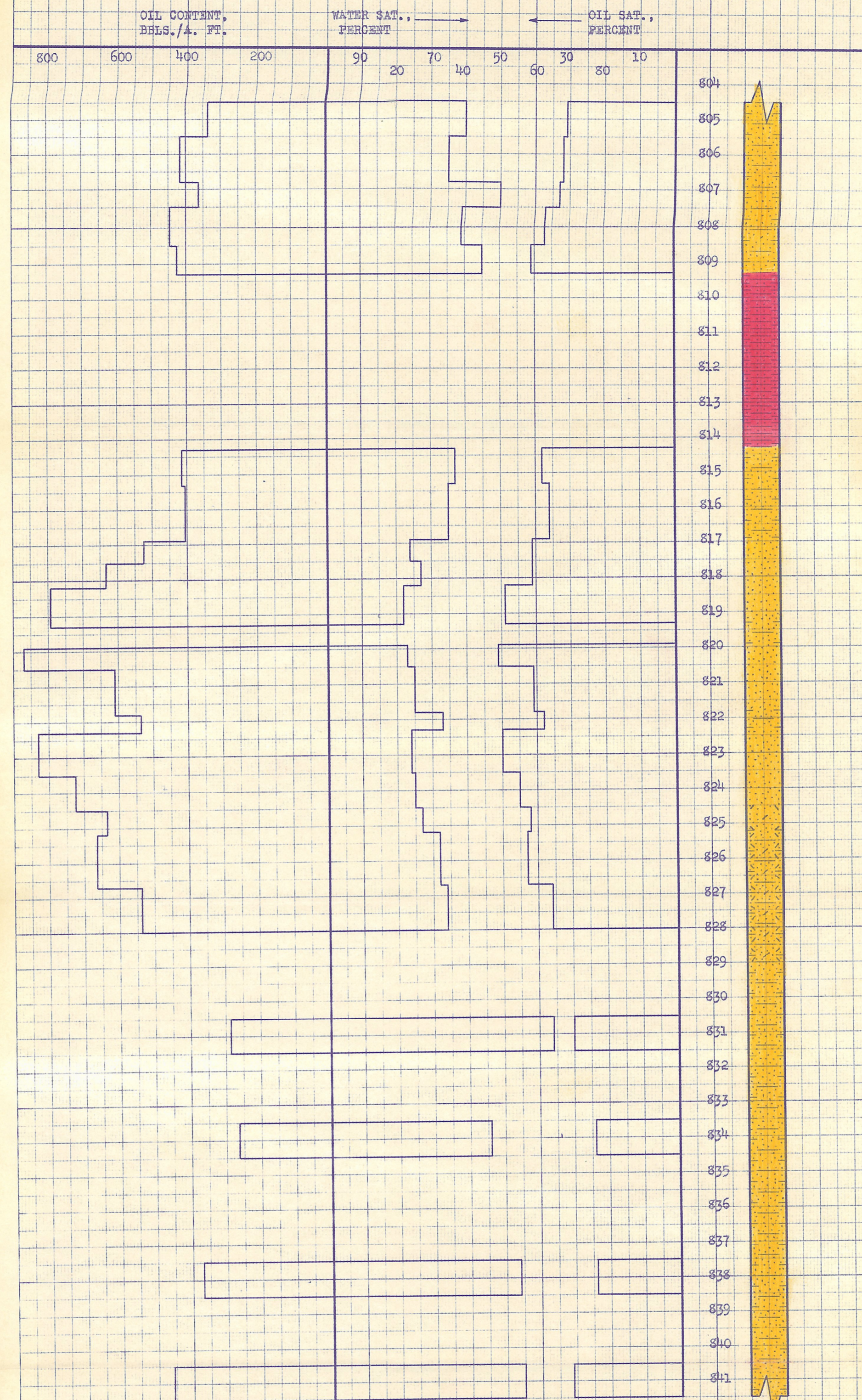
# Oilfield Research Laboratories




## SUMMARY OF PERMEABILITY & SATURATION TESTS


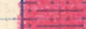
**TABLE III**

Company Creek Oil & Gas Company, Inc. Lease Wells Well No. 12

Depth Interval, Feet	Feet of Core Analyzed	Average Permeability, Millidarcys	Permeability Capacity Ft. x Md.	Average Percent Porosity	Average Percent Oil Saturation	Average Percent Water Saturation	Average Oil Content Bbl./A. Ft.	Total Oil Content Bbls./Acre
804.5 - 816.9	7.4	14.8	35.3	39.0	404	2,988		
816.9 - 841.5	14.5	18.8	38.9	34.7	582	8,446		
804.5 - 841.5	21.9	17.5	37.7	36.1	522	11,434		



KEY:  
 SANDSTONE  
 SHALY SANDSTONE  
 CARBONACEOUS SANDSTONE

 CARBONACEOUS SHALY SANDSTONE  
 SANDY SHALE

**CREEK OIL & GAS COMPANY, INCORPORATED**  
 WELLS LEASE

WELL NO. 12

NEOSHO COUNTY, KANSAS

DEPTH INTERVAL, FEET	FEET OF CORE ANALYZED	AVERAGE PERCENT POROSITY	AVG. OIL SATURATION PERCENT	AVG. WATER SATURATION PERCENT	AVG. OIL CONTENT BBLs./A. FT.	TOTAL OIL CONTENT BBLs./ACRE
804.5 - 816.9	7.4	14.8	35.3	39.0	404	2,988
816.9 - 841.5	14.5	18.8	38.9	34.7	582	8,446
804.5 - 841.5	21.9	17.5	37.7	36.1	522	11,434

OILFIELD RESEARCH LABORATORIES  
 CHANUTE, KANSAS  
 DECEMBER, 1957.