

OILFIELD RESEARCH LABORATORIES

813 EAST SIXTH
OKMULGEE, OKLAHOMA
PHONE: 1486

- REGISTERED ENGINEERS -

Chanute, Kansas

536 N. HIGHLAND
CHANUTE, KANSAS
PHONE: 728

October 28, 1957

Creek Oil & Gas Company, Inc.
P. O. Box 377
Chanute, Kansas

Gentlemen:

Enclosed herewith are the results of saturation tests run on the 3" Rotary core taken from the Wells Lease, Well No. 10, Neosho County, Kansas, and submitted to our laboratory by Mr. Jack McKelvey on October 18, 1957.

This core was sampled and the samples sealed in cans by a representative of the Creek Oil & Gas Company, Inc.

Your business is greatly appreciated.

Very truly yours,

OILFIELD RESEARCH LABORATORIES

Carl L. McElrea
Carl L. McElrea

CLM:cb

5 c.

Oilfield Research Laboratories

GENERAL INFORMATION & SUMMARY

Company Creek Oil & Gas Company, Inc. Lease Wells Well No. 10

Location _____

Section 27 Twp. 28S Rge. 18E County Neosho State Kansas

Name of Sand	-	Bartlesville
Top of Core	-	792.0
Bottom of Core	-	838.0
Top of Sand	-	797.0
Bottom of Sand	-	811.7
Total Feet of Permeable Sand	-	-
Total Feet of Floodable Sand	-	-

Distribution of Permeable Sand:			
Permeability Range	Feet	Cum. Ft.	
Millidarcys			

Average Permeability Millidarcys	-	
Average Percent Porosity	-	15.6
Average Percent Oil Saturation	-	35.0
Average Percent Water Saturation	-	40.7
Average Oil Content, Bbls./A. Ft.	-	437.
Total Oil Content, Bbls./Acre	-	5,742.
Average Percent Oil Recovery by Laboratory Flooding Tests	-	
Average Oil Recovery by Laboratory Flooding Tests, Bbls./A. Ft.	-	
Total Oil Recovery by Laboratory Flooding Tests, Bbls./Acre	-	
Total Calculated Oil Recovery, Bbls./Acre	-	
Packer Setting, Feet	-	
Viscosity, Centipoises @	-	
A. P. I. Gravity, degrees @ 60 °F	-	
Elevation, Feet	-	

OILFIELD RESEARCH LABORATORIES

LOGCompany Creek Oil & Gas Company, Inc. Lease Wells Well No. 10

<u>Depth</u>	<u>Interval,</u>	<u>Description</u>
<u>Feet</u>		

792.0 - 797.0 - Sandy shale.

797.0 - 801.3 - Alternate layers of sandstone and shale.

801.3 - 803.7 - Brown fine grained micaceous laminated shaley sandstone.

803.7 - 805.3 - Sandy shale.

805.3 - 811.7 - Alternate layers of sandstone and shale.

811.7 - 820.5 - Sandy shale.

820.5 - 822.0 - Brown to dark fine grained micaceous sandstone.

822.0 - 824.4 - Dark fine grained micaceous sandstone.

824.4 - 828.5 - Sandy shale.

828.5 - 838.0 - Dark shale.

Oilfield Research Laboratories

RESULTS OF SATURATION TESTS

TABLE II

Company Creek Oil & Gas Company, Inc. Lease Wells Well No. 10

Sat. No.	Depth, Feet	Effective Porosity Percent	Percent Saturation			Oil Content Bbls./A. Ft.	Feet of Core		Total Oil Content Bbls./Acre
			Oil	Water	Total		Ft.	Cum. Ft.	
1	797.5	10.9	17	73	90	144	1.0	1.0	144
2	798.5	11.3	20	72	92	175	1.0	2.0	175
3	799.5	13.3	34	46	80	351	1.0	3.0	351
4	800.5	15.2	29	48	77	342	1.3	4.3	445
5	801.5	15.0	37	46	83	431	0.7	5.0	302
6	802.5	18.1	37	26	63	520	1.0	6.0	520
7	803.5	18.8	46	25	71	671	0.7	6.7	470
8	805.5	15.5	50	32	82	602	0.7	7.4	422
9	806.5	14.3	31	52	83	344	1.0	8.4	344
10	807.5	17.0	43	24	67	567	1.0	9.4	567
11	808.5	19.3	38	24	62	569	1.0	10.4	569
12	809.5	15.5	35	41	76	421	1.0	11.4	421
13	810.5	18.5	43	26	69	618	1.0	12.4	618
14	811.5	16.9	43	21	64	564	0.7	13.1	394
							Total	- - - -	5,742

Oilfield Research Laboratories

SUMMARY OF PERMEABILITY & SATURATION TESTS

TABLE III

Company Creek Oil & Gas Company, Inc. Lease Wells Well No. 10

Depth Interval, Feet	Feet of Core Analyzed	Average Permeability, Millidarcys	Permeability Capacity Ft. x Md.
-------------------------	--------------------------	---	---------------------------------------

Depth Interval,
Feet

Feet of Core
Analyzed

Average
Percent
Porosity

Average
Percent Oil
Saturation

Average
Percent Water
Saturation

Average
Oil Content
Bbl./A. Ft.

Total Oil
Content
Bbls./Acre

797.0 - 811.7

13.1

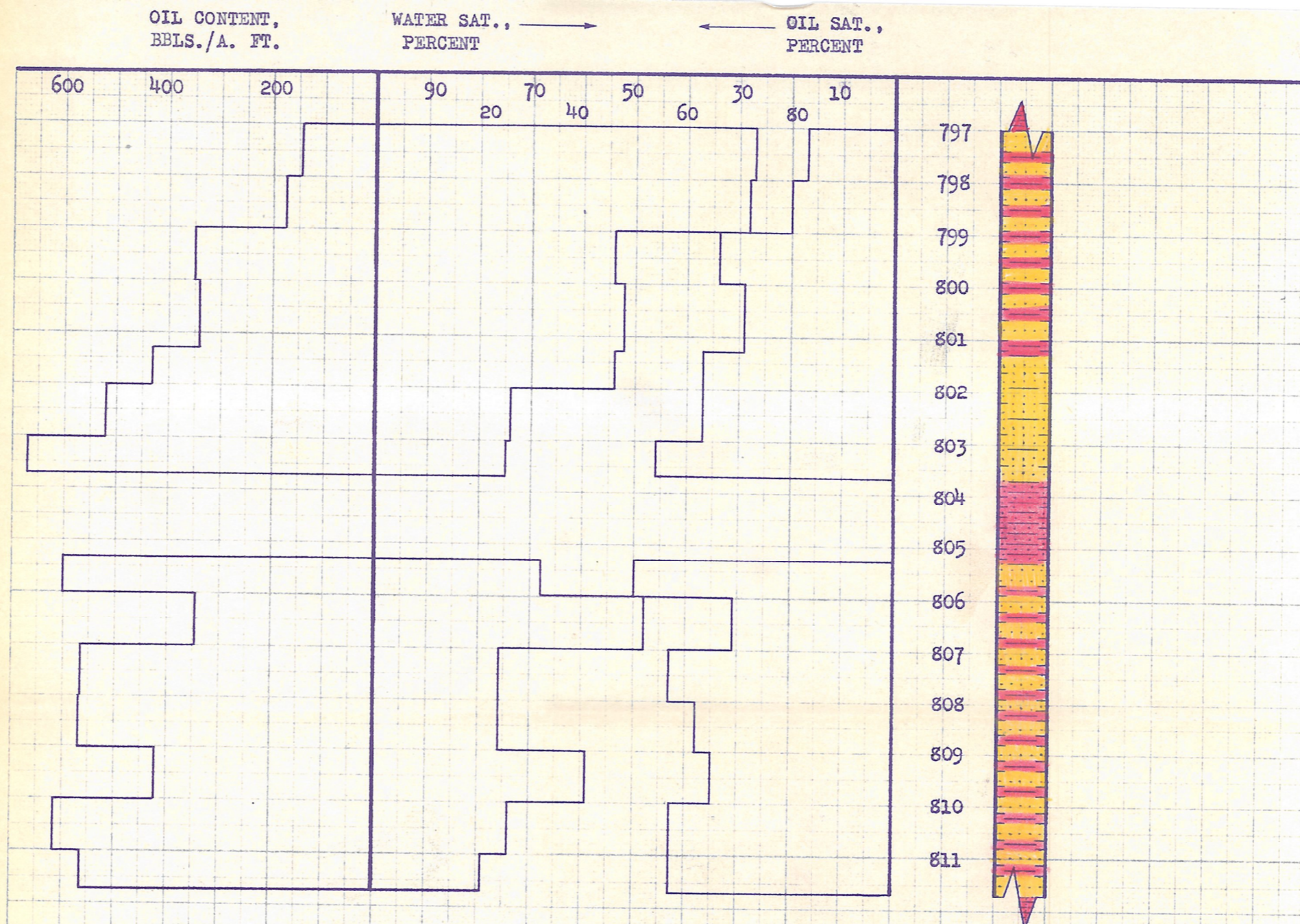
15.6

35.0

40.7

437

5,742



KEY:
 [Yellow with dots] SHALEY SANDSTONE
 [Red with horizontal lines] SANDY SHALE
 [Yellow with dots and red with horizontal lines] ALTERNATE LAYERS OF SANDSTONE AND SHALE

CREEK OIL & GAS COMPANY, INCORPORATED

WELLS LEASE NEOSHO COUNTY, KANSAS WELL NO. 10

DEPTH INTERVAL, FEET	FEET OF CORE ANALYZED	AVERAGE POROSITY, PERCENT	AVG. OIL SATURATION PERCENT	AVG. WATER SATURATION PERCENT	AVG. OIL CONTENT BBLs./A. FT.	TOTAL OIL CONTENT BBLs./ACRE
797.0 - 811.7	13.1	15.6	35.0	40.7	437	5,742

OILFIELD RESEARCH LABORATORIES
 CHANUTE, KANSAS
 OCTOBER, 1957